



Agilent Technologies

Advanced Design System 2002

LineCalc

February 2002

Notice

The information contained in this document is subject to change without notice.

Agilent Technologies makes no warranty of any kind with regard to this material, including, but not limited to, the implied warranties of merchantability and fitness for a particular purpose. Agilent Technologies shall not be liable for errors contained herein or for incidental or consequential damages in connection with the furnishing, performance, or use of this material.

Warranty

A copy of the specific warranty terms that apply to this software product is available upon request from your Agilent Technologies representative.

Restricted Rights Legend

Use, duplication or disclosure by the U. S. Government is subject to restrictions as set forth in subparagraph (c) (1) (ii) of the Rights in Technical Data and Computer Software clause at DFARS 252.227-7013 for DoD agencies, and subparagraphs (c) (1) and (c) (2) of the Commercial Computer Software Restricted Rights clause at FAR 52.227-19 for other agencies.

Agilent Technologies
395 Page Mill Road
Palo Alto, CA 94304 U.S.A.

Copyright © 2002, Agilent Technologies. All Rights Reserved.

Contents

1 Using LineCalc

The Basic LineCalc Process.....	1-1
Key Terms.....	1-2
Starting LineCalc	1-2
The LineCalc Window.....	1-3
Title Bar, Toolbar, and Menu Bar	1-3
Component Display	1-4
Shared Parameters Display.....	1-4
Parameters Display	1-5
Results Display	1-5
Status Bar.....	1-6
LineCalc Menus and Commands	1-6
Changing the Default Data Directory.....	1-7
Resetting the Display.....	1-7
Opening a Component File.....	1-7
Opening a Previously-Saved LineCalc Component File.....	1-8
Importing Components from the Active Design	1-9
Selecting a Component	1-10
Displaying Component Help	1-10
Changing Default Units.....	1-12
Changing Parameter Values.....	1-13
Interdependent Values for Electrical Parameters	1-13
Fixed Values for Physical Parameters	1-14
Performing a Synthesis.....	1-15
Performing an Analysis.....	1-15
Updating Schematics with LineCalc Results	1-16
Saving Results.....	1-17
Printing	1-18
Exiting the Program	1-18
Using AEL Commands	1-19
Using Macros to Automate Tasks	1-20
Creating a Macro File	1-20
Recording a Macro	1-20
Running a Macro from the Design Environment.....	1-21
Running a Macro from the UNIX Command Line.....	1-22

2 LineCalc Components

Components and Parameters.....	2-1
References/Shared Parameters	2-6
Parameter Definitions	2-7

Changing Parameter Defaults	2-9
3 LineCalc Error Messages	
4 LineCalc AEL Functions	
Index	

Chapter 1: Using LineCalc

LineCalc is an analysis and synthesis program for calculating electrical and physical parameters of single and coupled transmission lines.

LineCalc can communicate directly with the circuit simulators. You can send parameter data for selected circuit design elements, along with data on any associated substrates or walls, directly from the simulator to LineCalc. After the element parameter values are calculated, you can update the associated schematic or layout circuit design in the active simulator immediately with the LineCalc results. Or you can place a newly synthesized component into the Schematic window.

Using dialog boxes, you can make changes in parameter values of your transmission lines and see the results of those changes on the screen. You can use LineCalc like a spreadsheet, in the sense that a change in one value brings about a recalculation through all related values when you choose the appropriate Calculate button.

You can print results, save results to an element data file, or instantly update a schematic or layout in a circuit design.

Note LineCalc cannot be used with the signal processing simulators.

The Basic LineCalc Process

- Select a LineCalc component.
- Select one or more independent parameters for calculation.
- Change default parameter values, as necessary.
- Perform the analysis or synthesis.
- Update the design, if applicable.

Key Terms

Analysis Calculation of electrical parameters from physical data.

Synthesis Calculation of physical parameters from electrical data.

Shared Parameters Parameters common to a group of components and required for both analysis and synthesis.

LineCalc File (<filename>.lcs) The data file created when results from a LineCalc analysis or synthesis of a component are saved. The file contains information about the component's parameters, associated shared parameters, frequency, and units to support design iteration. This data file is created when you save results from a LineCalc analysis or synthesis of a component. The file contains information about the component's parameters, associated shared parameters, frequency, and units to support design iteration.

Starting LineCalc

Before running LineCalc, you should be familiar with the basic operation of the ADS design environment. (For details, refer to the *User's Guide*.)

To run LineCalc from within the Design Environment:

- From the Schematic window, choose **Tools > LineCalc > Start LineCalc**.

To run LineCalc in stand-alone mode:

- On the PC, from the Start menu choose **Programs > Advanced Design System 2001 > ADS Tools > LineCalc**.
- On UNIX, in a terminal window, type **linecalc**.

Note Starting LineCalc in this manner assumes you have established a path to the ADS installation directory. If you have not, type `<install_dir>/bin/linecalc`, where `<install_dir>` represents your complete installation path. For details on establishing a path statement, refer to Chapter 2 of the *Installation on UNIX Systems* manual.

When LineCalc is launched, the LineCalc window appears, as well as the Message/Status window. The Message/Status window displays messages about the status of the current process as well as warning messages.

The LineCalc Window

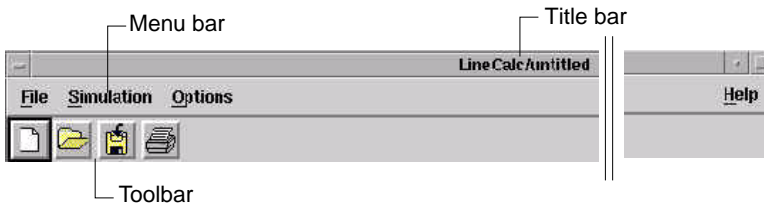
The LineCalc window is divided into several regions.

- “Title Bar, Toolbar, and Menu Bar” on page 1-3
- “Component Display” on page 1-4
- “Shared Parameters Display” on page 1-4
- “Parameters Display” on page 1-5
- “Results Display” on page 1-5
- “Status Bar” on page 1-6

The following sections describe these regions.

Title Bar, Toolbar, and Menu Bar

The *Title bar* displays the application name and the name of the active data file (or untitled if no data file is associated with the data being displayed).

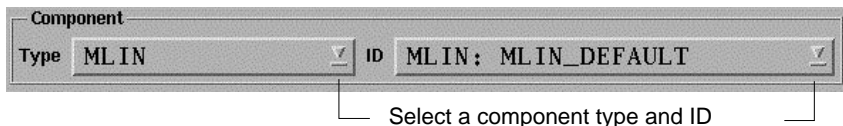


The *Toolbar* contains buttons for frequently-used commands.

The *Menu bar* displays the available menus and commands.

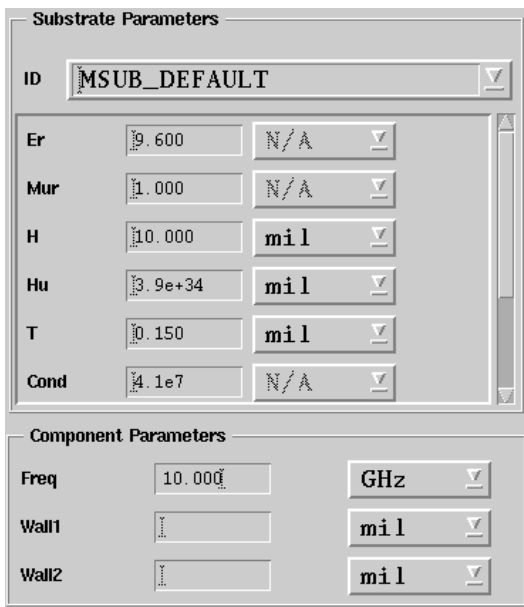
Component Display

The *Component* display lists the currently-selected component type and ID. You can choose a different component type and ID to analyze or synthesize, by the *Selection arrow*.



Shared Parameters Display

The *Shared Parameters* display consists of the Substrate Parameters and the Component Parameters sections. The parameters shared by all components with substrate parameters are listed in the Substrate Parameters area. The parameters shared by components with frequency or mwall parameters are listed in the Component Parameters area.



Parameters Display

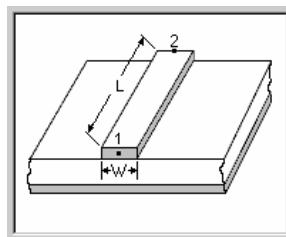
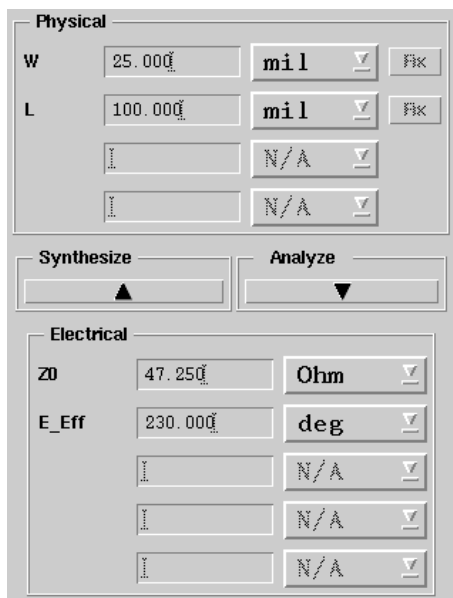
The *Parameters* display lists the physical and electrical parameter values of the currently-selected component.

In the *Physical* section, the *Fix* button indicates the status of the associated physical parameter:

- If the button indicates Fixed, the adjacent parameter is fixed during synthesis
- If the button indicates Fix, the adjacent parameter is updated during synthesis

You can compute the physical parameter values from electrical data by clicking *Synthesize*.

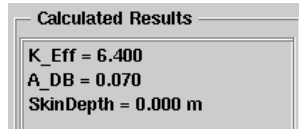
and clicking *Analyze* computes the electrical component parameters from physical data.



— Compute parameter values

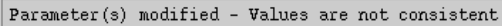
Results Display

The *Results* display shows the parameter values that change as a result of the synthesis or analysis. These are displayed as the calculated results.



Status Bar

The *Status Bar* at the bottom of the window shows the status of your displayed data. When you have changed a parameter value without recalculation (synthesis or analysis), the message appears: *Parameter(s) modified - Values are not consistent*. After you perform the calculation, the message appears: *Values are consistent*.

A screenshot of a status bar message. The message is displayed in a light gray rectangular box with a thin border. The text inside the box reads "Parameter(s) modified - Values are not consistent".

LineCalc Menus and Commands

This section describes the LineCalc Menus and Commands. The LineCalc User Interface has the following menus:

- File Menu
- Simulation Menu
- Options Menu
- Help Menu

Changing the Default Data Directory

The LincCalc program reads the files from and save these to your program startup directory, unless you change the default directory.

To use an alternate directory during your current program session:

1. From the Synthesis/LineCalc window, choose **File > Change Dir.**
2. Use the displayed dialog box to specify a directory path (other than the program startup directory) for reading and saving files until you exit the program.

Resetting the Display

You must clear any currently active work before selecting or importing components for a new synthesis or analysis.

- To save your work, choose **File > Save**; then choose **File > New**.
- To cancel a design in progress and start over, choose **File > New**.

Note Choosing *New* displays the default component.

Opening a Component File

After resetting the display, you can activate a component that you want to synthesize or analyze in one of these ways:

- By opening a previously-saved LineCalc component file, or
- By importing components from the active schematic or layout design

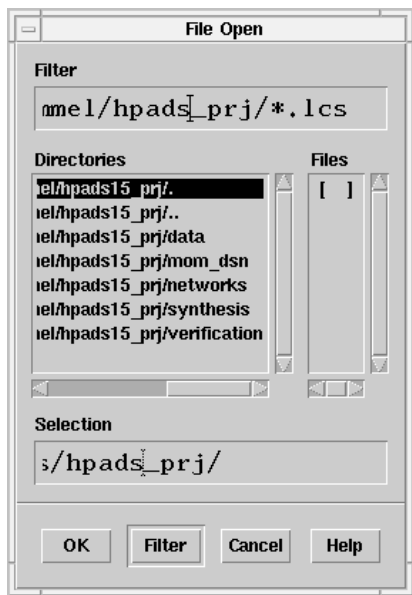
Note When you activate LineCalc, the last-saved component is displayed. Clear the display before opening a component file (see [“Resetting the Display” on page 1-7](#)).

Opening a Previously-Saved LineCalc Component File

You can activate a component that you want to synthesize or analyze by opening a previously-saved LineCalc component file.

To open a previously-saved LineCalc component file:

1. Choose **File > Open** to display the dialog box.



2. Specify the path to the directory where the component file is located. Click **Filter** to activate a list of data files in the specified directory. This step may not be necessary if the file is located in your current directory or if you changed your default data directory.

Note Choosing a file from a different directory does not change the default directory.

3. In the Data Files list, select the component file. The component data saved to that file becomes active in the LineCalc window.

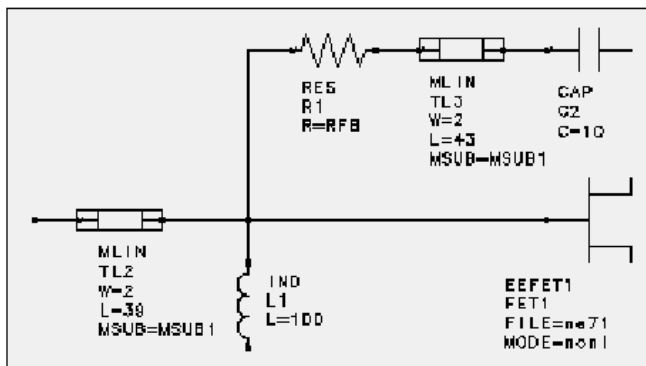
Importing Components from the Active Design

You can activate a component that you want to synthesize or analyze by importing components from the active schematic or layout design.

To import components from an active design:

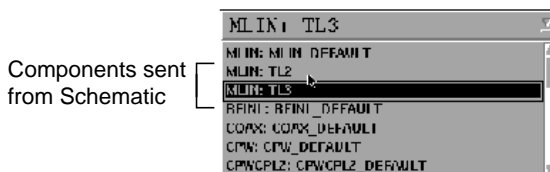
1. In the Schematic or Layout window, select the component you want to send to LineCalc. In the illustration, a portion of a schematic example, MLIN:TL2 is selected.

Note You can send only one component at a time.



2. Choose **Tools > Send Selected Components to LineCalc**. The component data for all selected components is sent to LineCalc.

In the LineCalc window, each component that you import from the Schematic or Layout window, along with its ID name, is listed in the *Component ID Selection* dialog box. In the illustration the two MLINs (TL2 and TL3) that were sent to LineCalc from the Schematic window are now displayed in the Component ID Selection list and can be selected for evaluation.



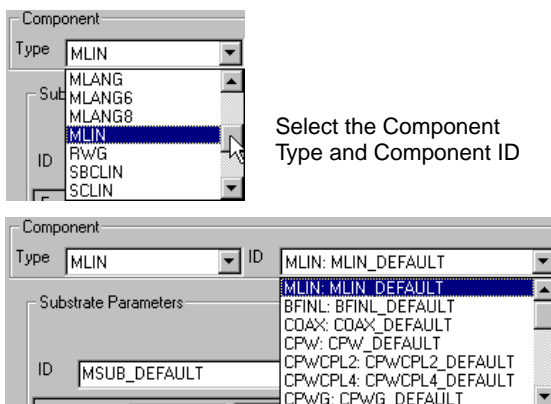
Only one component/ID calculation can be performed at a time. For example, select and perform any calculations on MLIN:TL3 before you attempt to select and modify MLIN:TL2.

Selecting a Component

Note Before selecting or importing components to begin a new synthesis or analysis, be sure to clear any currently active work. See [“Resetting the Display” on page 1-7](#).

To select a component:

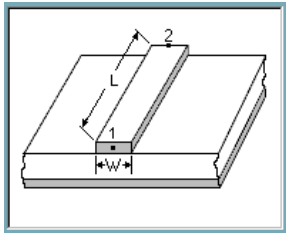
1. In the Component ID field, click **Select** to display the dialog box. The LineCalc window changes to display the active Component Type, Component ID, parameters, and other data.



2. Select the component you want displayed and click OK to accept the component and dismiss the dialog. Click Apply to accept the component and keep the dialog open.

Displaying Component Help

To display detailed information for a component, select **Help > What's This?** and place the question mark on the component illustration.



Changing Default Units

You can modify program units or frequencies before calculating the results by setting the Frequency, Length, Resistance, and Angle units.

To modify default units or frequencies:

1. In the Menu bar, select Options > Preferences. Change the default unit preferences by selecting from the drop-down lists. [Table 1-1](#) lists program options.

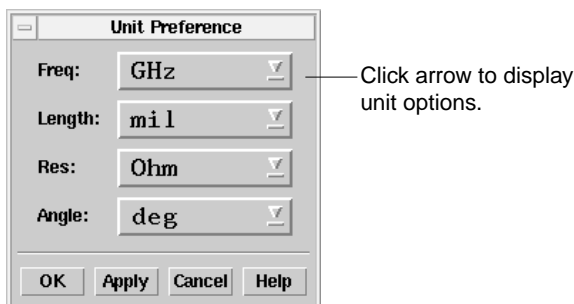


Table 1-1. Default Units

Unit	Options	Default
Frequency	GHz, MHz, kHz, Hz	GHz
Length	in, mil, m, cm, mm, um	mil
Resistance	kohm, ohm	ohm
Angle	deg, rad	deg

2. In the Units display, modify the settings and click OK to accept your changes. The newly-chosen unit is reflected when a new component is chosen.

Changing Parameter Values

To change any values in the Physical or Electrical parameter fields:

- Select the value and type a new value in the field.

To change Shared parameter values:

- Select the default value and type a new value in the field.
- To change the units associated with each shared parameter, select the units button next to each parameter field.

Note See also: [“Interdependent Values for Electrical Parameters”](#) on page 1-13 and [“Fixed Values for Physical Parameters”](#) on page 1-14

Interdependent Values for Electrical Parameters

For certain components, some of the electrical parameter values depend on the current values assigned to other parameters. In the following illustration, note the beginning values for Z0 and Z0 in the Electrical portion of the Parameters display for the MCLIN component.

To observe the values of related parameters change automatically, change the value of Z0 to 22 and press Enter (or click one of the other fields containing interdependent parameters).

Original values

Electrical		
ZE	65.982	Ohm
ZO	36.115	Ohm
Z0	48.81536	Ohm
C_DB	-10.67642	N/A
E_Eff	77.83120	deg

Modified values

Electrical		
ZE	65.982	Ohm
ZO	22.00	Ohm
Z0	38.09992	Ohm
C_DB	-6.02237	N/A
E_Eff	77.83120	deg

The display updates to show that the corresponding Z0 value changed from 48.815 to 38.099. Also, the C_DB value changed from -10.676 to -6.022. Generally, the last two visited fields are used to compute the other parameters.

Fixed Values for Physical Parameters

Certain components require the value of one of the physical parameters to be fixed (not modifiable) during synthesis. For these components, one parameter must be assigned a fixed value before you can perform a synthesis. For example, observe how the W and G parameters of the CPW component are interrelated. By default, when you select the CPW component, the value of G is fixed and the value of W is not. This default condition is shown by the label on the Fixed button, which is dimmed.

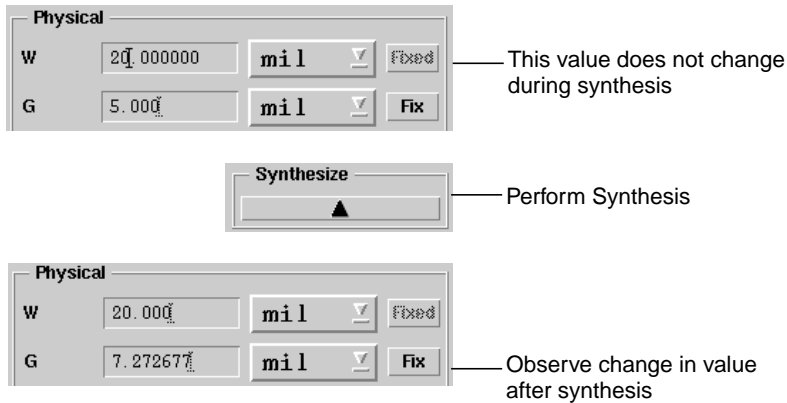
The figure consists of three screenshots of a software interface for setting physical parameters (W, G, L) for a CPW component.

- Top Screenshot:** Shows the 'Physical' panel with three rows: W (20.00000), G (5.00), and L (99.297244). Each row has a unit dropdown menu (all set to 'mil') and a 'Fix' button. The 'Fix' button for G is dimmed, while the others are active.
- Middle Screenshot:** Shows a 'Synthesize' button with a right-pointing arrow.
- Bottom Screenshot:** Shows the 'Physical' panel after synthesis. The W value has changed to 24.00000. The 'Fix' button for W is now active, and the 'Fix' button for G is dimmed.

Annotations with lines pointing to the buttons:

- Line from the dimmed 'Fix' button for G: "This value does not change during synthesis"
- Line from the 'Synthesize' button: "Perform Synthesis"
- Line from the active 'Fix' button for W: "Observe change in value after synthesis"

If you want to change the value of G, you must click the Fix button for W. The new condition is shown by the label on the button which changes to read Fixed and is dimmed. An active Fix button on the G value indicates that value is currently not fixed and will change during synthesis.



Performing a Synthesis

A synthesis computes the physical parameter values based on the electrical parameter values.

To synthesize a revised component:

- Select **Simulate > Compute Physical Params** or click **Calculate (Up button)** in the Parameters display. The values for physical parameters (shown in the upper portion of the display) are computed from the electrical values and the values in the Results display are updated.

Performing an Analysis

An analysis computes the electrical component parameters based on the physical parameter values.

To analyze a revised component:

- Select **Simulate > Compute Electrical Params** or click **Calculate (Down button)** in the Parameters display. The values for electrical parameters (shown in the lower portion of the display) are computed from the physical values and the values in the Results display are updated.

Updating Schematics with LineCalc Results

After performing a synthesis or analysis, you can place the component to the Schematic window.

In the Schematic window, select **Tools > Linecalc > Place New Synchronized Component**.

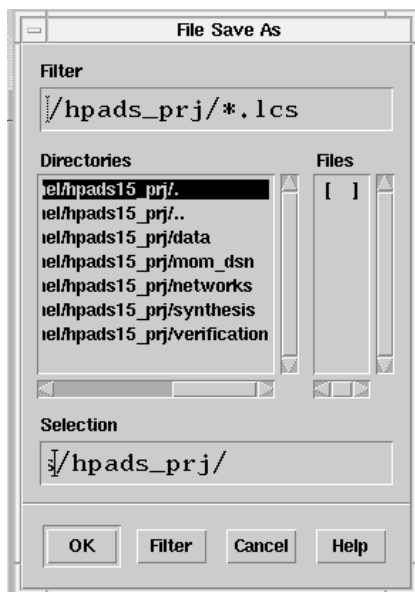
If you start LineCalc from the Schematic and send selected components to LineCalc for synthesis or analysis, you can update your schematic when your calculations are complete.

In the Schematic window, select the component to be updated. Then select **Tools > LineCalc > Update Selected Component From LineCalc**.

Saving Results

To save a LineCalc component file:

- Choose **File > Save** from the Synthesis/LineCalc window. The program automatically saves the filename with an `.lcs` extension. Unless you change the default data directory, the data file is saved in the program startup directory.



To save a LineCalc component file to a different data file:

1. In the Synthesis/LineCalc window, choose **File > Save As**.
2. In the dialog box, enter a filename and specify a directory path.

To save a design that was modified by LineCalc calculations:

- In the Schematic or Layout window, choose **File > Save**.

Printing

You can print the data for a component.

- To specify a printing configuration, choose **File > Print Setup**.
- To print the data associated with the currently displayed component, choose **File > Print**.

The printed data format is:

product information

date information

component type

component ID

units information

frequency value

shared parameters

physical parameters

electrical parameters

result parameters

Note For detailed information on print and print setup options, refer to your operating system documentation.

Exiting the Program

To exit LineCalc:

1. Choose **File > Exit**. If any unsaved changes are detected, you are prompted, *Do you want to save the design?*
2. Select **Yes** or **No**, as appropriate.

If you select **Yes**, and the currently active file had not been saved previously (that is, labeled *untitled* at the top of the window), the Save As dialog box appears, prompting you for a filename.

Using AEL Commands

Using the program's Applications Extension Language (AEL), you can create entries for user-defined components, customize the contents of library and palette menus, and write customized commands. For configuration details on using AEL, see the *AEL* manual.

To execute AEL commands:

- Choose **Options > Command Line** to open the Command Line dialog.



- Type the command(s) in the Command >> field or select one of the commands in the Command History list. Click Apply to execute the command. You can double-click a command in the list to select and execute it.

Note All commands entered in the Command >> field must be in correct AEL format.

Using Macros to Automate Tasks

Creating a Macro File

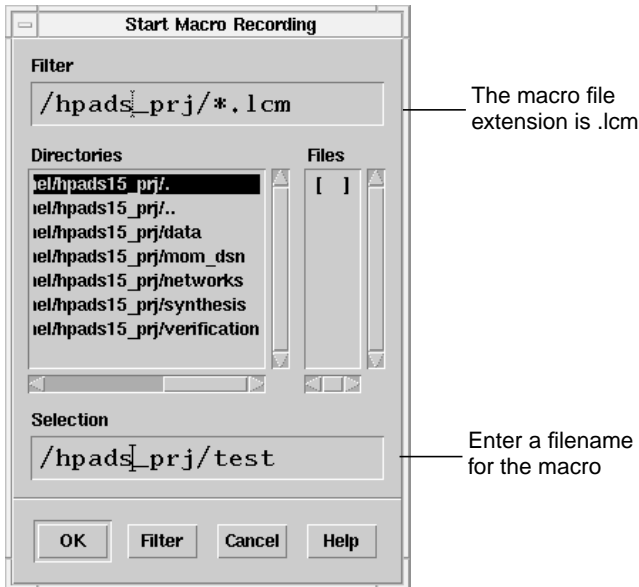
To create a macro file:

- Using any text editor, create a file in one of your project directories and type the lines containing the AEL functions you want to execute. The filename must have the extension *.ael*.

Recording a Macro

To record a macro:

- Choose **Options > Command Line** to open the Command Line dialog.
1. Select **Options > Start Record Macro**. In the dialog, enter a filename for the macro file you are going to record and choose OK to close the dialog.

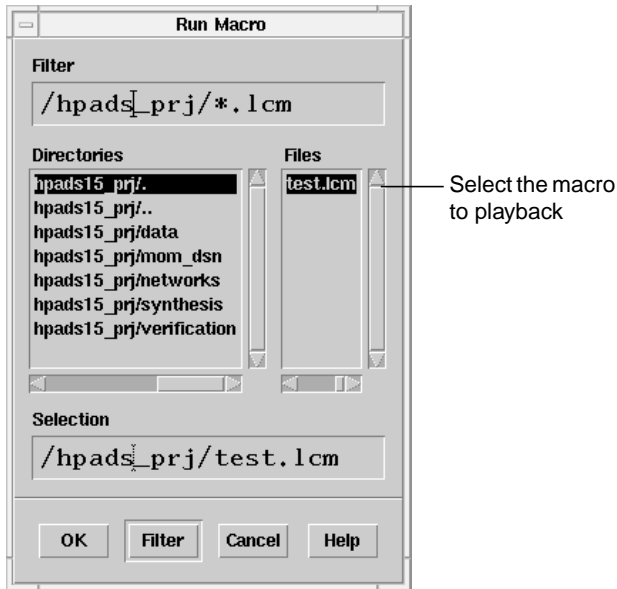


2. In the Command Line dialog, the Command History displays all actions taken in the LineCalc window during the recording. Alternatively, enter the AEL functions you want to record in the Command >> field.
3. Select **Options > Stop Record Macro** to stop recording.

Running a Macro from the Design Environment

To play back a macro:

1. Choose **Options > Playback Macro**. A dialog displays all the *.lcm* files in the current project directory. You can browse to display macros from another directory.



2. Select the macro you want to play back and click OK to execute the selected macro.

Running a Macro from the UNIX Command Line

To run a macro file from the UNIX command line:

- Change directories (cd) to your working directory and type:

```
$ linecalc -m <filename>.lcm
```

or

```
$ linecalc -m synthesize.lcm
```

Chapter 2: LineCalc Components

Components and Parameters

Table 2-1 lists the LineCalc-supported components and any associated parameters that can be modified or calculated. Components are grouped by substrates and details regarding their electrical and physical values, references, and other computed results are given.

Table 2-1. Components and Associated Parameters

Component	Electrical Parameters	Physical Parameters	Substrate Parameters	Calculated Values
COAX	Z0 E_Eff	Di Do L	Er TanD Rho Sigma	A_DB
RWG	Z0 E_Eff	A B L	Er Rho TanD Mur TanM Sigma	K_Eff A_DB
Components using the CPWSUB substrate (CPWSUB = *)				
CPW	Z0 E_Eff	W G L	Er Mur H Hu T Cond TanD Rough	K_Eff A_DB SkinDepth
CPWCPL2	ZE Z0 Z0 C_DB E_Eff Components using the SSUB substrate (SSUB = *)	W G S L	Er Mur H Hu T Cond TanD Rough	KE KO AE_DB AO_DB SkinDepth

Table 2-1. Components and Associated Parameters (continued)

Component	Electrical Parameters	Physical Parameters	Substrate Parameters	Calculated Values
CPWCPL4	ZE ZO Z0 C_DB E_Eff	W = Wi G S = Si L	Er Mur H Hu T Cond TanD Rough	K_Eff KE KO AE_DB AO_DB SkinDepth
CPWG	Z0 E_Eff	W G L	Er Mur H Hu T Cond TanD Rough	K_Eff A_DB SkinDepth
Components using the FSUB substrate (FSUB = *)				
BFINL	Z0 E_Eff	D L	Er Cond Fa Fb Fdw	K_Eff A_DB SkinDepth
IFINL	Z0 E_Eff	D L	Er Cond Fa Fb Fdw	K_Eff A_DB SkinDepth
UFINL	Z0 E_Eff	D L	Er Cond Fa Fb Fdw	K_Eff A_DB SkinDepth

Table 2-1. Components and Associated Parameters (continued)

Component	Electrical Parameters	Physical Parameters	Substrate Parameters	Calculated Values
Components using the MSUB substrate (MSUB = *)				
MCLIN	ZE ZO Z0 C_DB E_Eff	W S L	Er Mur H Hu T Cond TanD Rough	KE KO AE_DB AO_DB SkinDepth
MLANG	ZE ZO Z0 C_DB E_Eff	W S L	Er Mur H Hu T Cond TanD Rough	KE KO AE_DB AO_DB SkinDepth
MLANG6	ZE ZO Z0 C_DB E_Eff	W S L	Er Mur H Hu T Cond TanD Rough	KE KO AE_DB AO_DB SkinDepth
MLANG8	ZE ZO Z0 C_DB E_Eff	W S L	Er Mur H Hu T Cond TanD Rough	KE KO AE_DB AO_DB SkinDepth
MLIN	Z0 E_Eff	W L	Er Mur H Hu T Cond TanD Rough	K_Eff A_DB SkinDepth

Table 2-1. Components and Associated Parameters (continued)

Component	Electrical Parameters	Physical Parameters	Substrate Parameters	Calculated Values
Components using the SSUB substrate (SSUB = *)				
SBCLIN	ZE ZO Z0 C_DB E_Eff	W S L	Er Mur B T Cond TanD	AE_DB AO_DB SkinDepth
SCLIN	ZE ZO Z0 C_DB E_Eff	W S L	Er Mur B T Cond TanD	AE_DB AO_DB SkinDepth
SLIN	Z0 E_Eff	W L	Er Mur B T Cond TanD	A_DB SkinDepth
SLINO	Z0 E_Eff	W S L	Er Mur B S T Cond TanD	A_DB SkinDepth
SOCLIN	ZE ZO Z0 C_DB E_Eff	W WO S L	Er Mur B T Cond TanD	AE_DB AO_DB SkinDepth

Table 2-1. Components and Associated Parameters (continued)

Component	Electrical Parameters	Physical Parameters	Substrate Parameters	Calculated Values
Components using the SSSUB substrate (SSSUB = *)				
SSCLIN	ZE ZO Z0 C_DB E_Eff	W S L	Er Mur H Hu Hl T Cond TanD Rough	KE KO AE_DB AO_DB SkinDepth
SSLIN	Z0 E_Eff	W L	Er Mur H Hu Hl T Cond TanD Rough	K_Eff A_DB SkinDepth

References/Shared Parameters

Table 2-2 lists the LineCalc-supported references/shared parameters.

Table 2-2. References/Shared Parameters

References/ Shared Parameters	Parameters	
	Parameter Name	Default Value
CPWSUB	Er H T Cond Rough TanD Hu Mur COND	10.0 25.0 0.150 4.1e7 0.0 0.0 3.9e+07 mil 1.0 Cond
FSUB	Er Fdw Fa Fb Cond	2.2 62.5 mil 900.0 mil 400.0 mil 5.8e7
MSUB	Er H T Cond Cond1 Cond2 Rough TanD Hu Mur Diel1 Diel2 Hole Res	9.6 10 mil 0.150 4.1e7 Cond Cond1 0.0 0.0 3.9e+34m 1.0 Diel Diel1 hole resi
Note: The default MSUB Cond value has changed to be 4.1e7 (the conductivity of gold).		

Table 2-2. References/Shared Parameters (continued)

References/ Shared Parameters	Parameters	
	Parameter Name	Default Value
SSSUB	Er	10.0
	H	25.0
	T	0.150
	Cond	4.1e7
	Rough	0.0
	HU	100.0
	HL	100.0
	TanD	0.0
	Mur	1.0
	COND	Cond
SSUB	Er	2.5
	B	62.5
	T	0.150
	Cond	5.8e7
	Cond1	Cond
	Cond2	Con1
	TanD	0.0
	Mur	1.0
Note: The default MSUB Cond value has changed to be 4.1e7 (the conductivity of gold).		

Parameter Definitions

Table 2-3 lists LineCalc parameter definitions.

Table 2-3. LineCalc Parameter Definitions

Parameter	Definition
A	Width of rectangular waveguide
A_DB	Total attenuation of the structure in dB
AE_DB	Total even mode attenuation of coupled section in dB
AO_DB	Total odd mode attenuation of coupled section in dB
B	Ground plane spacing from top to bottom (stripline) or height of rectangular waveguide
C_DB	Coupling factor in dB, i.e., $C(\text{dB}) = 20\log_{10} [(Z_E - Z_O)/(Z_E + Z_O)]$
D	Gap width in length units
DI	Inner diameter (COAX)

Table 2-3. LineCalc Parameter Definitions (continued)

Parameter	Definition
DO	Outer diameter (COAX)
E	Electrical length of line or coupled section (angle units)
E_EFF	Effective electrical length of line or coupled section (angle units)
E_MEAN	Mean electrical length of coupled microstrip or coplanar waveguide section (angle units)
ER	Substrate relative dielectric constant
G	Gap between conductor and ground planes (CPW, CPWG)
H	Substrate thickness in length units
HL	Lower ground plane to substrate spacing in length units
HU	Upper ground plane to substrate spacing in length units
HC	Distance from top cover to top of substrate in length units
KE	Even-mode effective dielectric constant: $KE=[C/Vp(\text{even mode})]^2$
K_EFF	Effective dielectric constant: $K_EFF=(C/Vp)^2$
KO	Odd-mode effective dielectric constant: $KO=[C/Vp(\text{odd mode})]^2$
L	Length of line or coupled section
MUR	Relative permeability
Rough	RMS surface roughness in length units
S	Spacing between lines
SI	Spacing between inner center conductors (CPWCPL4)
SIGM	Dielectric conductivity value in Siemens per meter
TAND	Dielectric loss tangent
TANM	Magnetic loss tangent
TEMP	Temperature; can not be modified by the user
W	Width of line
WI	Width of inner center conductors (CPWCPL4)
WO	Offset of coupled lines for offset coupled stripline
Ze	Impedance for even-mode
Zo	Impedance for odd-mode
Z0	For coupled-line components, such as SCLIN or MCLIN, $Z0=\text{sqrt}(Ze \times Zo)$

Changing Parameter Defaults

The default parameters that appear in the LineCalc window for editing are set in a file called *lcuiinit* in the directory *\$HPEESOF_DIR/linecalc/lib* (where *\$HPEESOF_DIR* represents the complete path for your installation). You can make a local copy of this file and change the default parameters so that less editing is required whenever you use LineCalc.

To modify the *lcuiinit* file:

1. Copy the file *lcuiinit* to a directory of your choosing. Using any text editor, make the desired changes. Save the file.
2. Now you need to tell the program where to look for your customized file. Make a local copy of the LineCalc configuration file *linecalc.cfg* found in *\$HPEESOF_DIR/config*. Copy this file to *\$HOME/hpeesof/config*.
3. Using any text editor, locate the variable *LCALCUI_INIT_FILE* and modify the path to point to the location of your modified *lcuiinit* file.

Note On the PC, *\$HOME* represents the path you specified as the Home Folder during installation (*C:\users\default* by default); *\$HPEESOF_DIR* represents the path you specified as your Program Folder during installation (*C:\AdvDesSys*).

The component definition format is:

```
ELEMENT <element_name> <element_id> <# of ports> <units> <physical>
[<physical_fixed> <physical>] <subst> <tand> <sigma> <temp> <electrical>
[<electrical_fixed><electrical>]<result>
```

For example:

```
ELEMENT COAX COAX_DEFAULT 4 UNITS PHYSICAL PHYSICAL_FIXED PHYSICAL SUBST
ELECTRICAL RESULT UNITS UNITS_DEFAULT
FREQ_VAL=10.00 FREQ=GHz LENGTH=mil RES=ohm ANGLE=deg
PHYSICAL DI=37.00
PHYSICAL_FIXED DO=90.00
PHYSICAL L=650.00
SUBST COAXSUB=COAXSUB_DEFAULT ER=2.10 TAND=0.0003 RHO=1.0
ELECTRICAL Z0=35.00 E=90.00
RESULT A_DB=0.01
```


Chapter 3: LineCalc Error Messages

This section describes the possible error messages and how to handle each one of them.

Syntax error in AEL file

Comment: An error has occurred in an AEL file.

Category: Syntax error in AEL file

How to resolve it: Check the AEL file, confirming that all the parentheses are matched, there are no missing “;”, etc.

AEL files not loaded

Comment: The AEL files are not loaded due to error(s) occurred.

Category: Syntax error in AEL file

How to resolve it: Check the AEL file, confirming that all the parentheses are matched, there are no missing “;”, etc.

Invoke process failed

Comment: Unable to invoke process (could be the LineCalc Engine, Help Server, etc.)

Category: Error in the initialization phase

How to resolve it: Confirm that all the necessary tools (LineCalc Engine, Status Server, Help Server, and Hardcopy Server) are available and functional.

Unable to connect to the Status Server

Comment: The LineCalc User Interface cannot connect to the Status Server process.

Category: Error in the initialization phase.

How to resolve it: Confirm that all the necessary tools (LineCalc Engine, Status Server, Help Server, and Hardcopy Server) are available and functional.

AEL command not found

Comment: The specified AEL command is not found

Category: Invalid AEL command.

How to resolve it: Confirm that the command is spelled properly and is indeed a supported function.

Incomplete config file

Comment: Some information in the configuration file, *linecalc.cfg*, is missing.

Category: Error in configuration file.

How to resolve it: Search the *linecalc.cfg* file to find the required information that is missing and replace it. Without this information, the program cannot function.

Init file not found

Comment: The initialization file, *lcuinit*, is not found.

Category: Error in the initialization file.

How to resolve it: The initialization file must be placed where the program can read it. This is usually *\$HPEESOF_DIR/lib/linecalc*. Confirm that all the information is there: the users can add more information to it, but the user should never delete any information from the original initialization file.

Syntax error in init file

A syntax error in the init file, *lcuinit*, has been found.

Category: Error in the initialization file.

How to resolve it: The initialization file must be placed where the program can read it. This is usually *\$HPEESOF_DIR/lib/linecalc*. Confirm that all the information is there: the users can add more information to it, but the user should never delete any information from the original initialization file.

Missing units information

Comment: Units information is not found.

Category: Error in data file.

How to resolve it: Confirm that all information exists for a given component in the data file.

Missing substrate information

Comment: Substrate information is not found.

Category: Error in data file.

How to resolve it: Confirm that all information exists for a given component in the data file.

Missing tand information

Comment: Tand information is not found.

Category: Error in data file.

How to resolve it: Confirm that all information exists for a given component in the data file.

Category: Error in data file.

How to resolve it: Confirm that all information exists for a given component in the data file.

Missing mcover information

Comment: Mcover information is not found.

Category: Error in data file.

How to resolve it: Confirm that all information exists for a given component in the data file.

Category: Error in data file.

How to resolve it: Confirm that all information exists for a given component in the data file.

Missing mwall information

Comment: Mwall information is not found.

Category: Error in data file.

How to resolve it: Confirm that all information exists for a given component in the data file.

Missing perm information

Comment: Perm information is not found.

Category: Error in data file.

How to resolve it: Confirm that all information exists for a given component in the data file.

Missing sigma information

Comment: Sigma information is not found.

Category: Error in data file.

How to resolve it: Confirm that all information exists for a given component in the data file.

Missing temp information

Comment: Temp information is not found.

Category: Error in data file.

How to resolve it: Confirm that all information exists for a given component in the data file.

Missing parameters information

Comment: Some parameters are missing.

Category: Error in data file.

How to resolve it: Confirm that all information exists for a given component in the data file.

Missing number of nodes information

Comment: The number of nodes information is missing.

Category: Error in data file.

How to resolve it: Confirm that all information exists for a given component in the data file.

Save element type failed

Comment: Unable to save the component type.

Category: Invalid component type to be saved.

How to resolve it: Confirm that the component type is one of the supported LineCalc components.

Save element ID failed

Comment: Unable to save the component ID.

Category: Invalid component ID to be saved.

How to resolve it: This is very unlikely to happen. However if it does happen, it is most likely due to unable to allocate more memory to store the information.

Save number of nodes information failed

Comment: Unable to save the number of nodes information.

Category: Unable to save the specified component.

How to resolve it: If this error occurs, the program is probably unable to allocate more memory to save the information. Another issue which needs to be looked at is that the information should be in the proper format: if the format is expected to be a number, it should be a number; if the format is expected to be a string, it should be a string type.

Save units information failed

Comment: Unable to save the units information.

Category: Unable to save the specified component.

How to resolve it: If this error occurs, the program is probably unable to allocate more memory to save the information. Another issue which needs to be looked at is that the information should be in the proper format: if the format is expected to be a number, it should be a number; if the format is expected to be a string, it should be a string type.

Save freq unit failed

Comment: Unable to save the frequency unit information.

Category: Unable to save the specified component.

How to resolve it: If this error occurs, the program is probably unable to allocate more memory to save the information. Another issue which needs to be looked at is that the information should be in the proper format: if the format is expected to be a number, it should be a number; if the format is expected to be a string, it should be a string type.

Save length unit failed

Comment: Unable to save the length unit information.

Category: Unable to save the specified component.

How to resolve it: If this error occurs, the program is probably unable to allocate more memory to save the information. Another issue which needs to be looked at is that the information should be in the proper format: if the format is expected to be a number, it should be a number; if the format is expected to be a string, it should be a string type.

Save res unit failed

Comment: Unable to save the resistor unit information.

Category: Unable to save the specified component.

How to resolve it: If this error occurs, the program is probably unable to allocate more memory to save the information. Another issue which needs to be looked at is that the information should be in the proper format: if the format is expected to be a number, it should be a number; if the format is expected to be a string, it should be a string type.

Save angle unit failed

Comment: Unable to save the angle unit information.

Category: Unable to save the specified component.

How to resolve it: If this error occurs, the program is probably unable to allocate more memory to save the information. Another issue which needs to be looked at is that the information should be in the proper format: if the format is expected to be a number, it should be a number; if the format is expected to be a string, it should be a string type.

Save substrate information failed

Comment: Unable to save the substrate information.

Category: Unable to save the specified component.

How to resolve it: If this error occurs, the program is probably unable to allocate more memory to save the information. Another issue which needs to be looked at is that the information should be in the proper format: if the format is expected to be a number, it should be a number; if the format is expected to be a string, it should be a string type.

Save mwall information failed

Comment: Unable to save the mwall information.

Category: Unable to save the specified component.

How to resolve it: If this error occurs, the program is probably unable to allocate more memory to save the information. Another issue which needs to be looked at is that the information should be in the proper format: if the format is expected to be a number, it should be a number; if the format is expected to be a string, it should be a string type.

Save shared parameters failed

Comment: Unable to save the shared parameters information.

Category: Unable to save the specified component.

How to resolve it: If this error occurs, the program is probably unable to allocate more memory to save the information. Another issue which needs to be looked at is that the information should be in the proper format: if the format is expected to be a number, it should be a number; if the format is expected to be a string, it should be a string type.

Save physical parameters information

Comment: Unable to save the physical parameters information.

Category: Unable to save the specified component.

How to resolve it: If this error occurs, the program is probably unable to allocate more memory to save the information. Another issue which needs to be looked at is that the information should be in the proper format: if the format is expected to be a

number, it should be a number; if the format is expected to be a string, it should be a string type.

Save electrical parameters information

Comment: Unable to save the electrical parameters information.

Category: Unable to save the specified component.

How to resolve it: If this error occurs, the program is probably unable to allocate more memory to save the information. Another issue which needs to be looked at is that the information should be in the proper format: if the format is expected to be a number, it should be a number; if the format is expected to be a string, it should be a string type.

Save result parameters failed

Comment: Unable to save the result parameters information.

Category: Unable to save the specified component.

How to resolve it: If this error occurs, the program is probably unable to allocate more memory to save the information. Another issue which needs to be looked at is that the information should be in the proper format: if the format is expected to be a number, it should be a number; if the format is expected to be a string, it should be a string type.

Invalid element type

Comment: Invalid component type.

Category: Invalid component type.

How to resolve it: An invalid component type has been requested. Confirm that the component type is spelled correctly and is indeed a LineCalc supported component.

Unable to write the data file

Comment: Unable to save to the specified data file.

Category: Unable to write the data file.

How to resolve it: If this error occurs, the current user probably cannot write to the specified data file; this can also occur if the directory is not writable by the current user.

Create new shared parameters failed

Comment: Unable to create a new shared parameters information.

Category: Unable to create a new shared parameters.

How to resolve it: When this error occurs, the program is probably unable to allocate more memory to store the data.

Invalid substrate

Comment: Invalid substrate.

Category: Invalid substrate type.

How to resolve it: Confirm the substrate type entered is supported by LineCalc.

Error Retrieving DONE NETLIST

Comment: Invalid parameters for analysis/synthesis.

Category: Invalid parameters for analysis/synthesis.

How to resolve it: Ensure the electrical, physical, and substrate parameter values are within the range of usage, per user guide.

Inconsistent Electrical Parameter Value. Ze and Zo must be of the same sign.

Comment: Ze and Zo must be of the same sign.

Category: Ze and Zo must be of the same sign.

How to resolve it: Use the same sign for both Ze and Zo.

Chapter 4: LineCalc AEL Functions

This section describes the supported AEL functions for the LineCalc User Interface.

lcuiuser_analyze()

Computes the electrical parameters from the physical parameter values. In addition, the result parameters are computed. Returns: None.

See also: `lcuiuser_synthesize()`, `lcuiuser_simulation_analyze()`, `lcuiuser_simulation_synthesize()`

Syntax:

```
defun lcuiuser_analyze()
```

Example

```
lcuiuser_analyze();
```

lcuiuser_elemid_select()

Displays the data set belonging to the specified component ID, `elemID`. Returns: None.

See also: `lcuiuser_elemtype_select()`

Syntax:

```
defun lcuiuser_elemid_select( elemID )
```

where

elemID is the component ID to be displayed.

Example

```
lcuiuser_elemid_select( "MLIN_DEFAULT" );
```

lcuiuser_elemid_select_apply()

Obsolete; see `lcuiuser_elemid_select`.

lcuiuser_elemtype_select ()

Displays the data set belonging to the specified component type, `elemType`. If there are multiple components in the memory for a given component type, the first

component type found from the list is displayed. To display a component type that has a specified ID, select the component by ID by calling the `lcuiuser_elemid_select_apply` function. Returns: None.

See also: `lcuiuser_elemid_select()`

Syntax:

```
defun lcuiuser_elemtype_select (elemType)
```

where

elemType is the component type to be displayed.

Example

```
lcuiuser_elemtype_select("MLIN");
```

lcuiuser_elemtype_select_apply()

Obsolete; see `lcuiuser_elemid_select`.

lcuiuser_file_chdir_ok()

Performs a change directory command to the specified directory, `dirName`. If a local configuration file (`linecalc.cfg`) exists, the function reads in the information and, if needed, overwrites any default values. If the current component has been modified and has not been saved, a question dialog box opens asking if the current component should be saved prior to performing a change directory command. Returns: None.

See also: `lcuiuser_file_save()`, `lcuiuser_file_save_as_ok()`

Syntax:

```
defun lcuiuser_file_chdir_ok(dirName)
```

where

dirName is the directory to go to

Example

```
lcuiuser_file_chdir_ok("dirName1");
```

lcuiuser_file_exit()

Exits the LineCalc User Interface program. If the current component set is not saved, a dialog box opens asking if the data should be saved prior to exiting the program. If

no data needs to be saved, a different dialog box opens asking to confirm the exit command. Returns: None.

See also: `lcuiuser_file_save()`, `lcuiuser_file_save_as_ok()`

Syntax:

```
defun lcuiuser_file_exit()
```

Example

```
lcuiuser_file_exit();
```

lcuiuser_file_new()

Displays the default component. The default component is the first component being displayed when the LineCalc User Interface is invoked. If the component is not saved yet, a dialog box opens so that the component can be saved prior to switching to a different component. Returns: None.

See also: `lcuiuser_file_save()`, `lcuiuser_file_save_as_ok()`

Syntax:

```
defun lcuiuser_file_new()
```

Example

```
lcuiuser_file_new();
```

lcuiuser_file_open_ok()

Opens the data file specified by filename and displays the data properly. If the current component is not saved yet, a dialog box opens so that the data can be saved before moving on to a different component set. Returns: None.

See also: `lcuiuser_file_save()`, `lcuiuser_file_save_as_ok()`

Syntax:

```
defun lcuiuser_file_open_ok(filename)
```

where

filename is filename to be opened

Example

```
lcuiuser_file_open_ok("dirName1/linecalc1.lcs");
```

or

```
lcuiuser_file_open_ok("linecalc1.lcs");
```

lcuiuser_file_print()

Sends the displayed data to a printer using the program's *Hardcopy Server*. Returns: None.

See also: `lcuiuser_file_print_setup()`

Syntax:

```
defun lcuiuser_file_print()
```

Example

```
lcuiuser_file_print();
```

lcuiuser_file_print_setup()

Opens the print setup dialog box to set the printer selections using the program's *Hardcopy Server*. Returns: None.

See also: `lcuiuser_file_print()`

Syntax:

```
defun lcuiuser_file_print_setup()
```

Example

```
lcuiuser_file_print_setup();
```

lcuiuser_file_save()

See also: `lcuiuser_file_save_as_ok()`

Syntax:

```
defun lcuiuser_file_save()
```

Saves the data to the current data filename. If there is no associated data file for the current component or if write permission is not set for the current data file, opens the File Selection dialog box to either select or enter the filename to save the data.

Returns: None.

Example

```
lcuiuser_file_save();
```

lcuiuser_file_save_as_ok()

Saves the currently displayed component to a different file, specified by filename. Returns: None.

See also: `lcuiuser_file_save()`

Syntax:

```
defun lcuiuser_file_save_as_ok(filename)
  where
    filename is filename to be saved
```

Example

```
lcuiuser_file_save_as_ok("filename1.lcs");
```

lcuiuser_option_cmdline_apply()

Executes the AEL command string, `cmdString`. Returns: None.

See also: `lcuiuser_option_pbmacro_ok()`

Syntax:

```
defun lcuiuser_option_cmdline_apply(cmdString)
  where
    cmdString is AEL command string to be executed
```

Example

```
lcuiuser_option_cmdline_apply("lcuiuser_file_exit()");
```

lcuiuser_option_pbmacro_ok()

Executes the specified AEL macro file, `filename`, which contains of a set of supported AEL functions. Returns: None.

See also: `lcuiuser_option_cmdline_apply()`

Syntax:

```
defun lcuiuser_option_pbmacro_ok(filename)
```

where

filename is AEL macro file to be executed

Example

```
lcuiuser_option_pbmacro_ok("macro1.ael");
```

lcuiuser_set_angle_unit()

Sets the angle unit to the specified string, *angleUnitString*. Note that *angleUnitString* must be one of the unit strings supported by LineCalc. The supported angle units are: deg, and rad. Returns: None.

See also: `lcuiuser_set_freq_unit()`, `lcuiuser_set_freq_value()`, `lcuiuser_set_length_unit()`, `lcuiuser_set_res_unit()`

Syntax:

```
defun lcuiuser_set_angle_unit(angleUnitString)
```

where

angleUnitString is the new angle unit string

Example

```
lcuiuser_set_angle_unit("deg");
```

lcuiuser_set_elec_res_unit()

Sets the unit of specified electrical parameter *parmName*, to the specified string, *elecUnit*. Note that *elecUnit* must be one of the unit strings supported by LineCalc. The supported units for electrical resistance parameters are: ohm and kohm. The supported units for electrical angle parameters are: deg, and rad. Returns: None.

See also: `lcuiuser_set_mwall_length_unit ()`, `lcuiuser_set_phys_length_unit()`, `lcuiuser_set_subst_length_unit ()`.

Syntax:

```
defun lcuiuser_set_elec_res_unit ( parmName, elecUnit )
```

where

parmName is electrical parameter name of unit to be modified

elecUnit is new electrical unit string

Example

```
lcuiuser_set_elec_res_unit ("E_Eff", "rad");  
lcuiuser_set_elec_res_unit("Z0", "kohm");
```

lcuiuser_set_electrical_parms()

Sets the electrical parameter value of parameter name, `parmName`, to `parmValue`. `parmName` must be one of the valid electrical parameter for the currently displayed component. Returns: None.

See also: `lcuiuser_set_physical_parms()`, `lcuiuser_set_physical_parms_fix()`

Syntax:

```
defun lcuiuser_set_electrical_parms(parmName, parmValue)
```

where

parmName is electrical parameter name to be modified

parmValue is new electrical parameter value

Example

```
lcuiuser_set_electrical_parms("E_EFF", "360");
```

lcuiuser_set_freq_unit()

Sets the frequency unit string value, `freqUnitString`. Note that `freqUnitString` must be one of the unit strings supported by LineCalc. The supported frequency units are: GHz, MHz, kHz, and Hz. Returns: None.

See also: `lcuiuser_set_angle_unit()`, `lcuiuser_set_freq_value()`, `lcuiuser_set_length_unit()`, `lcuiuser_set_res_unit()`

Syntax:

```
defun lcuiuser_set_freq_unit(freqUnitString)
```

where

freqUnitString is the new frequency unit string

Example

```
lcuiuser_set_freq_unit("GHz");
```

lcuiuser_set_freq_value()

Sets the frequency unit value, `freqUnitValue`. It should be passed as a string value. Returns: None.

See also: `lcuiuser_set_angle_unit()`, `lcuiuser_set_freq_unit()`, `lcuiuser_set_length_unit()`, `lcuiuser_set_res_unit()`

Syntax:

```
defun lcuiuser_set_freq_value(freqUnitValue)
```

where

freqUnitValue is the new frequency unit value

Example

```
lcuiuser_set_freq_value("10.00");
```

lcuiuser_set_length_unit()

Sets the length unit string value, `lengthUnitString`. Note that `lengthUnitString` must be one of the unit strings supported by LineCalc. The supported length units are: in, mil, m, cm, mm, and um. Returns: None.

See also: `lcuiuser_set_angle_unit()`, `lcuiuser_set_freq_unit()`, `lcuiuser_set_res_unit()`

Syntax:

```
defun lcuiuser_set_length_unit(lengthUnitString)
```

where

lengthUnitString is the new length unit string

Example

```
lcuiuser_set_length_unit("mil");
```

lcuiuser_set_mwall_length_unit()

Sets the unit of specified mwall parameter `parmName`, to the specified string, `mwallUnit`. Note that `mwallUnit` must be one of the unit strings supported by LineCalc. The supported length units for mwall length parameters are: mil, um, mm, cm, meter, in, and ft. Returns: None.

See also: `lcuiuser_set_phys_length_unit ()`, `lcuiuser_set_subst_length_unit()`, `lcuiuser_set_elec_res_unit ()`.

Syntax:

```
defun lcuiuser_set_mwall_length_unit ( parmName, mwallUnit )
```

where

parmName is mwall parameter name of unit to be modified

mwallUnit is new mwall unit string

Example

```
lcuiuser_set_mwall_length_unit ( "Wall1", "mil");
```

```
lcuiuser_set_mwall_length_unit ( "Wall2", "um");
```

lcuiuser_set_phys_length_unit()

Sets the unit of specified physical parameter *parmName*, to the specified string, *physUnit*. Note that *physUnit* must be one of the unit strings supported by LineCalc. The supported length units for physical length parameters are: mil, um, mm, cm, meter, in, and ft. Returns: None.

See also: `lcuiuser_set_mwall_length_unit ()`, `lcuiuser_set_subst_length_unit()`, `lcuiuser_set_elec_res_unit()`.

Syntax:

```
defun lcuiuser_set_phys_length_unit ( parmName, physUnit )
```

where

parmName is physical parameter name of unit to be modified

physUnit is new physical unit string

Example

```
lcuiuser_set_phys_length_unit ( "W", "mil");
```

lcuiuser_set_physical_parms()

Sets the physical parameter value of the specified parameter name, *parmName*, to *parmValue*. *parmName* must be one of the valid physical parameter for the currently displayed component. Returns: None.

See also: `lcuiuser_set_electrical_parms()`, `lcuiuser_set_physical_parms_fix()`

Syntax:

```
defun lcuiuser_physical_parms(parmName, parmValue)
  where
    parmName is physical parameter name to be modified
    parmValue is new physical parameter value
```

Example

```
lcuiuser_set_physical_parms("W", "25.00");
```

lcuiuser_set_physical_parms_all()

Obsolete.

lcuiuser_set_physical_parms_fix()

Sets the physical parameter fixed value of the specified parameter name, *parmName*, to *fixValue*. *fixValue* should be either 0 or 1. *parmName* must be one of the valid physical parameter for the currently displayed component. Returns: None.

See also: `lcuiuser_set_electrical_parms()`, `lcuiuser_set_physical_parms()`

Syntax:

```
defun lcuiuser_set_physical_parms_fix(parmName, fixValue)
  where
    parmName is physical parameter name to be modified
    fixValue is new fixed physical parameter(either 0 or 1)
```

Example

```
lcuiuser_set_physical_parms_fix("W", 0);
```

lcuiuser_set_res_unit()

Sets the resistor unit string value, *resUnitString*. Note that it must be one of the unit strings supported by LineCalc. The supported resistor units are: kohm and ohm. Returns: None.

See also: `lcuiuser_set_angle_unit()`, `lcuiuser_set_freq_unit()`, `lcuiuser_set_length_unit()`

Syntax:

`defun lcuiuser_set_res_unit(resUnitString)`

where

resUnitString is the new resistor unit string

Example

```
lcuiuser_set_res_unit("ohm");
```

`lcuiuser_set_shared_parms()`

Obsolete; see `lcuiuser_set_subst_parm_value()`.

`lcuiuser_set_subst_length_unit()`

Sets the unit of specified shared parameter `parmName`, to the specified string, `substUnit`. Note that `substUnit` must be one of the unit strings supported by LineCalc. The supported length units for shared length parameters are: mil, um, mm, cm, meter, in, and ft. Returns: None.

See also: `lcuiuser_set_mwall_length_unit ()`, `lcuiuser_set_phys_length_unit()`, `lcuiuser_set_elec_res_unit ()`.

Syntax:

```
defun lcuiuser_set_subst_length_unit ( parmName, substUnit )
```

where

parmName is shared parameter name of unit to be modified

substUnit is new shared unit string

Example

```
lcuiuser_set_subst_length_unit ( "Hu", "mil");
```

`lcuiuser_set_subst_parm_value()`

Sets the shared parameter value of the parameter name, `parmName`, to `parmValue`. `parmName` must be one of the valid shared parameter for the currently displayed component. Shared parameters are substrate, tand, mcover, mwall, perm, and sigma parameters. In addition, shared parameters for COAX and RWG components include those listed in ["References/Shared Parameters" on page 2-6](#). Returns: None.

Syntax:

```
defun lcuuser_set_subst_parm_value(parmName, parmValue)
```

```
  where
```

```
  parmName is shared parameter name to be modified
```

```
  parmValue is new shared parameter value
```

Example

```
lcuuser_set_subst_parm_value("ER", "9.91");
```

lcuuser_simulation_analyze()

Computes the electrical parameters from the physical parameter values. In addition to computing the electrical parameters, the result parameters are computed.

Returns: None.

See also: lcuuser_analyze(), lcuuser_synthesize(), lcuuser_simulation_synthesize()

Syntax:

```
defun lcuuser_simulation_analyze()
```

Example

```
lcuuser_simulation_analyze();
```

lcuuser_simulation_synthesize()

Computes the physical parameters from the electrical parameter values. In addition to computing the physical parameters, the result parameters are computed. Returns:

None.

See also: lcuuser_analyze(), lcuuser_synthesize(), lcuuser_simulation_analyze()

Syntax:

```
defun lcuuser_simulation_synthesize()
```

Example

```
lcuuser_simulation_synthesize();
```

lcuuser_synthesize()

Computes the physical parameters from the electrical parameter values. In addition to computing the physical parameters, the result parameters are computed. Returns:

None.

See also: `lcuiuser_analyze()`, `lcuiuser_simulation_analyze()`,
`lcuiuser_simulation_synthesize()`

Syntax:

```
defun lcuiuser_synthesize()
```

Example

```
lcuiuser_synthesize();
```

lcuiuser_simulation_interrupt()

Interrupts the simulation. LineCalc remains available for future simulation usage.
Returns: None.

See also: `lcuiuser_simulation_stop()`

Syntax:

```
defun lcuiuser_simulation_interrupt()
```

Example

```
lcuiuser_simulation_interrupt();
```

lcuiuser_simulation_stop()

Interrupts the simulation process and the LineCalc engine becomes unavailable. If a user requests another simulation to be done, the LineCalc engine is invoked automatically. Returns: None.

See also: `lcuiuser_simulation_interrupt()`

Syntax:

```
defun lcuiuser_simulation_stop()
```

Example

```
lcuiuser_simulation_stop();
```


Index

A

- AEL
 - functions, LineCalc, 4-1
- Analysis, 1-2
- analyzing
 - components in LineCalc, 1-15

C

- components
 - importing from simulator into LineCalc, 1-9

D

- data files
 - creating, 1-2

F

- files, component
 - opening (LineCalc), 1-8
 - saving (LineCalc), 1-17

L

- layouts
 - updating after LineCalc synthesis/analysis, 1-16

LineCalc

- starting, 1-2
- updating a schematic or layout after synthesis/analysis, 1-16

M

- macros
 - creating a macro file, 1-20
 - recording a macro, 1-20
 - running a macro, 1-21, 1-22

P

- parameters
 - definitions, 2-7
 - fixed values, 1-14
 - interdependent values, 1-13
 - modifying, 1-12
 - shared, 1-2

R

- results
 - LineCalc, saving, 1-17

S

- schematics
 - updating after LineCalc synthesis/analysis, 1-16
- shared parameters, 1-2
- Synthesis, 1-2
- synthesizing
 - components, 1-15
 - with fixed values, 1-14

V

- values
 - fixed, 1-14
 - interdependent, 1-13

