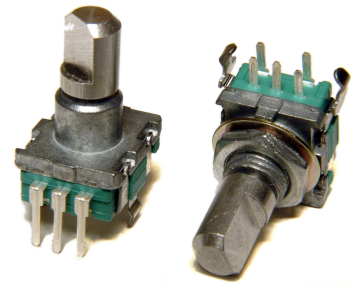


**Model EN11**  
**11mm Rotary Encoder**  
**2 Bits Gray Code**  
**Incremental/Contacting Type**  
**Metal Bushing/Shaft**  
**Push-on Switch Option**  
**RoHS Compliant**



**MODEL STYLES**

Top Adjust, with Switch, Threaded Bushing	EN11-HSM
Top Adjust, without Switch, Threaded Bushing	EN11-HNM
Top Adjust, with Switch, Plain Bushing	EN11-HSB
Top Adjust, without Switch, Plain Bushing	EN11-HNB
Side Adjust, with Switch, Threaded Bushing	EN11-VSM
Side Adjust, without Switch, Threaded Bushing	EN11-VNM
Side Adjust, with Switch, Plain Bushing	EN11-VSB
Side Adjust, without Switch, Plain Bushing	EN11-VNB

**ELECTRICAL<sup>1</sup>**

Pulses ( Per Revolution )	20
Encoder Closed Circuit Resistance	3 Ohms, max.
Encoder Contact Rating	10mA/ 5Vdc
Operating Current, Maximum	10mA
Dielectric Strength	300Vac/1mA, 1 minute
Insulation Resistance, Minimum	100M ohms at 250Vdc/ 1mA
Sliding Noise ( at 60 RPM )	2.0ms max.
Contact Bounce ( at 15 RPM)	5.0ms max.
Operating Speed ( RPM )	100 RPM max.
Switch Power rating	10mA/ 5Vdc
Switch Contact Resistance	100 milliohms
Actual Electrical Travel, Nominal	Continuous

<sup>1</sup> Specifications subject to change without notice.

# Model EN11

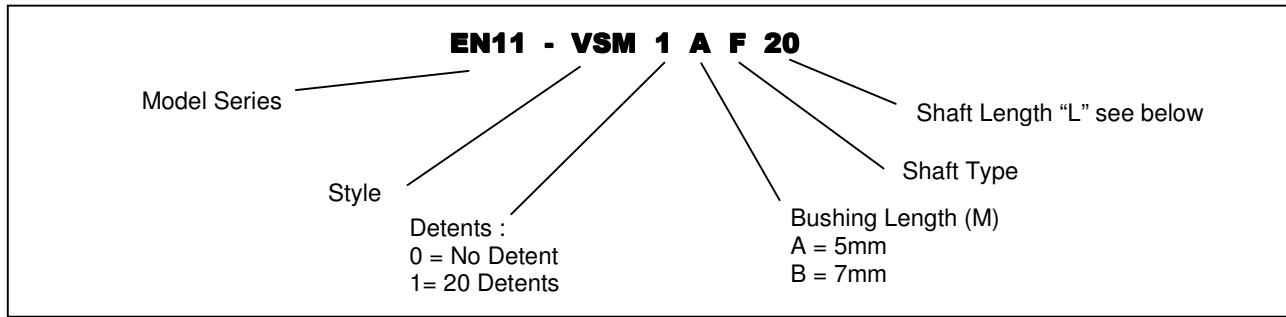
## MECHANICAL

Total Mechanical Travel	Continuous
Detents ( per Revolution)	0 and 20
Rotational Torque of Detent, Maximum	2.5 oz-in
Switch Operating Force	550 gf
Switch Travel	0.5mm

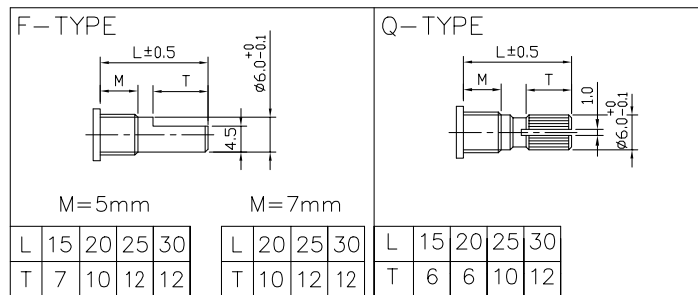
## ENVIRONMENTAL

Operating Temperature Range	-30°C to +85°C
Rotational Life	30,000 cycles

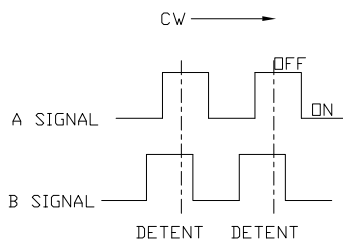
## ORDERING INFORMATION<sup>2</sup>



### Shaft Types



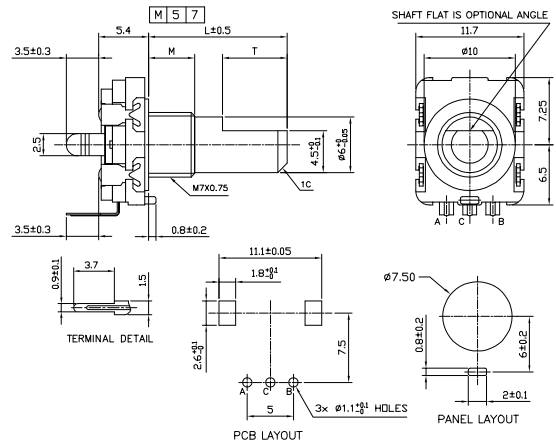
## CIRCUIT DIAGRAM



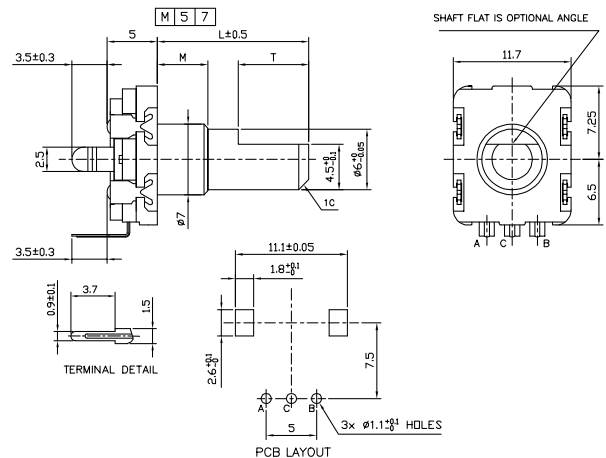
<sup>2</sup> Contact our customer service for custom designs and features.

## OUTLINE DRAWING

**MODEL EN11-HNM**  
**(Top Adjust, without Switch, Threaded Bushing)**

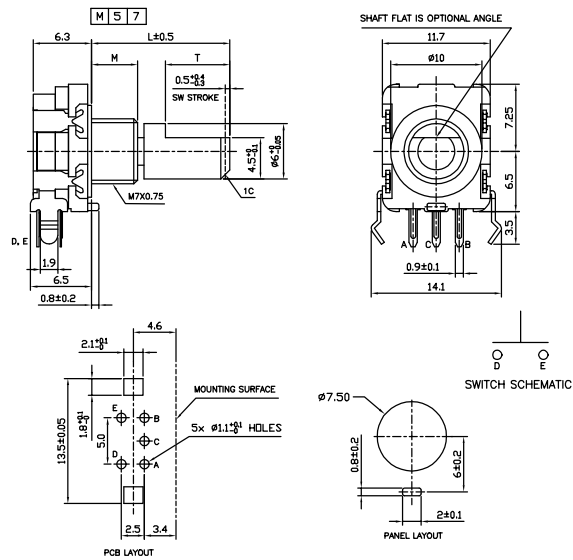


**MODEL EN11-HNB**  
**(Top Adjust, without Switch, Plain Bushing)**

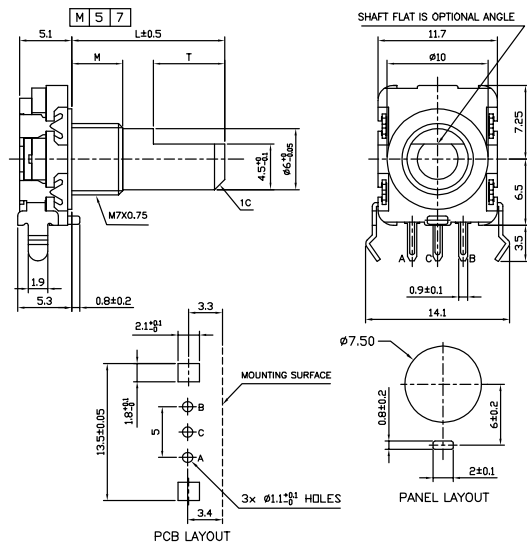


# Model EN11

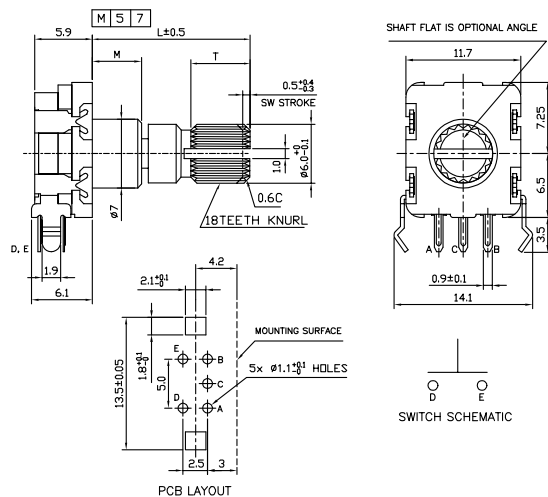
## MODEL EN11-VSM (Side Adjust, with Switch, Threaded Bushing)



## MODEL EN11-VNM (Side Adjust, without Switch, Threaded Bushing)



## MODEL EN11-VSB (Side Adjust, with Switch, Plain Bushing)



## MODEL EN11-VNB (Side Adjust, without Switch, Plain Bushing)

