

Keywords: crystal oscillator, quartz crystal, loading capacitor, loading capacitance, pulling range, crystal, circuit model, frequency variation, synthesizer

## APPLICATION NOTE 2127

# Modeling of Quartz Crystal

Sep 22, 2003

*Abstract: This application note, describes a method for modeling a crystal, with loading capacitance.*

*Clock generator (CLK gen) designers can use a crystal model to easily determine the loading capacitance for a required frequency. Circuit and system designer can use the model to simulate the behavior of crystal oscillators.*

*To model a crystal, we use a simple circuit to measure the oscillation frequencies under different loading capacitance. Then, we employ the crystal circuit model to interpolate the measured data to determine the parameters in the circuit model.*

## Introduction

Quartz crystals have been widely used in clock generators and synthesizers to generate accurate reference frequencies. The most cost-effective crystals on the market have a frequency range of 30kHz to 30MHz, with 50-100 ppm accuracy in the 0°C to 70°C temperature range.

To use or design a crystal oscillator appropriately, it is important to know the crystal's behavior under its loaded condition. In this application note, we will introduce a method for modeling a crystal with loading capacitance and show applications of the model.

## Test Setup

The test setup is shown in **Figure 1**.

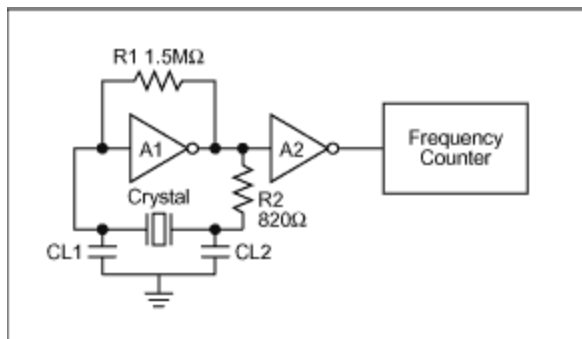


Figure 1. Test setup.

In the setup, A1 and A2 are inverters; CL1 and CL2 are the loading capacitors. During the test, CL1 = CL2 and the value varies from 5pf to 59pf with the inverter supply voltage  $V_{cc} = 3.1V$  and  $V_{cc} = 2.3V$ . The crystal in the test has a nominal frequency of 27MHz at load capacitance of 14pF. It should be noted that the actual loading capacitance to the crystal equals  $CL1 \parallel CL2$  plus the parasitic capacitance of board and the terminals of the inverters.

## Test Results

Table 1 and 2 present the two sets of measurements for  $V_{cc}=3.1V$  and  $2.3V$ , respectively.

**Table 1. Oscillator Frequencies with Variable Load Capacitors at  $V_{cc}=3.1V$**

CL1, CL2 (pf)	5	8	12	15	18	20	22
Fout (MHz)	27.01411	27.00832	27.00583	27.00395	27.00188	27.00130	27.00037
$\Delta$ Fout (ppm)	523	308	216	146	70	48	14
CL1, CL2 (pf)	24	27	33	39	45	50	59
Fout (MHz)	26.99954	26.99856	26.99687	26.99592	26.99480	26.99424	26.99340
$\Delta$ Fout (ppm)	-17	-53	-116	-151	-193	-213	-244

**Table 2. Oscillator Frequencies with Variable Load Capacitors at  $V_{cc}=2.3V$**

CL1, CL2 (pf)	5	8	12	15	18	20	22
Fout (MHz)	27.01319	27.00780	27.00542	27.00360	27.00160	27.00106	27.00016
$\Delta$ Fout (ppm)	489	288	200	133	59	39	6
CL1, CL2 (pf)	24	27	33	39	45	50	59
Fout (MHz)	26.99935	26.99837	26.99675	26.99579	26.99468	26.99415	26.99329
$\Delta$ Fout (ppm)	-24	-60	-121	-156	-197	-217	-249

The two measured data sets are also plotted in **Figure 2**

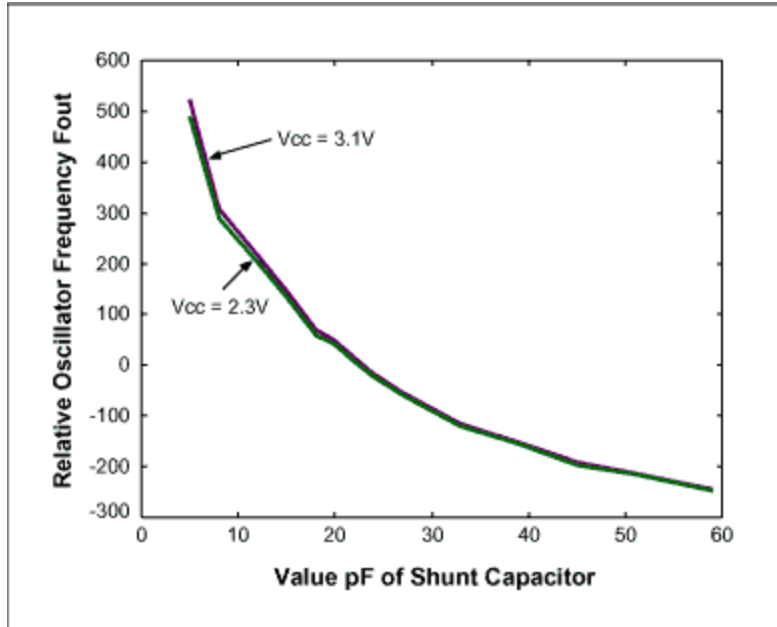


Figure 2. Crystal frequency variation (ppm) vs. shunt capacitor value.

From the data measurement, we have the following observations:

- 1) Loading capacitors can change the crystal's oscillation frequency considerably. The result shows that the total crystal variation range can reach as high as 750ppm for the crystal under test.
- 2) The frequency variation is also dependent on  $V_{cc}$ . Lower supply voltage reduces the frequency. This may be due to the changes of inverter input and output capacitance caused by the change of supply voltage. The resistor R2 in Figure 1 has an effect on reducing such a voltage dependency. But the value of the resistor cannot be too large; otherwise it will make the oscillator hard to start.
- 3) Based on the data, the crystal frequency is much more sensitive to small loading capacitance. This implies that in application of crystal oscillator, we should use a crystal requiring relative large load capacitance for its nominal frequency.
- 4) The resistor R1 in Fig. 1 helps the oscillator to start. Also the inverter's characters affect the oscillator's performance. High-speed inverters should be used. If the inverter's speed is not high enough, the oscillation may not start.

## Modeling of Quartz Crystal

In the oscillator or VCXO design, the crystal model is required. A commonly adopted crystal resonator model [1-2] is depicted as **Figure 3**.

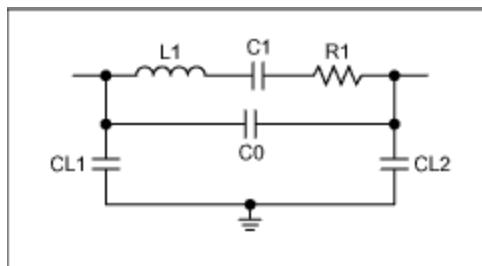


Figure 3. Crystal model.

Next, we will use the measured data given in Tables 1 and 2 to determine the values of the components in Figure 3. According to [1], in most crystal oscillator applications, the oscillation frequency is the parallel frequency of the resonator in Fig 3. Define  $CL = CL1 \parallel CL2$  and  $f_p$  to be the oscillation frequency, we can have the impedance equation written as

$$j2\pi f_p L_1 + \frac{1}{j2\pi f_p C_1} = -\frac{1}{j2\pi f_p (C_0 + C_L)} \quad (1)$$

Solve the equation for  $f_p$  yielding,

$$f_p = \frac{1}{2\pi \sqrt{L_1 C_1}} \sqrt{1 + \frac{C_1}{C_0 + C_L}} \quad (2)$$

Define

$$f_s = \frac{1}{2\pi \sqrt{L_1 C_1}} \quad (3)$$

We then can rewrite Eq. (2) in a vector form as

$$f_p^2 = \left[ 1 \quad \frac{1}{C_0 + C_L} \right] \begin{bmatrix} f_s^2 \\ f_s^2 C_1 \end{bmatrix} \quad (4)$$

With Eq. (4) we can run the least-square estimation directly to estimate  $f_s$ ,  $C_1$ ,  $L_1$ , and  $C_0$ . It should be noted that the value of  $R1$  is usually given by the crystal datasheet. For the crystal used in our test,  $R1 = 40\Omega$ . To estimate  $C_0$ , at a given supply voltage, vary the value of  $C_0$  to get the best least-square fit to the measured data sets, assuming that the effect of  $V_{cc}$  is only on the value of  $C_0$ . The estimated component's values of the model in Figure 3 are listed as follows

$$f_p = 26.9873\text{MHz}, \quad C_1 = 15.93\text{fF}, \quad L_1 = 2.184\text{mH}, \\ C_0 = 5.7\text{pF @ } V_{cc} = 3.1\text{V}, \quad \text{and } C_0 = 5.96\text{pF @ } V_{cc} = 2.3\text{V}$$

In **Figure 4**, it shows the output frequency curve calculated by Eq. (2) with the estimated component values verse the measured frequencies. The root of mean square (RMS) of the interpolation is 14ppm for the case of  $V_{cc} = 3.1\text{V}$  and 13ppm for  $V_{cc} = 2.3\text{V}$ .

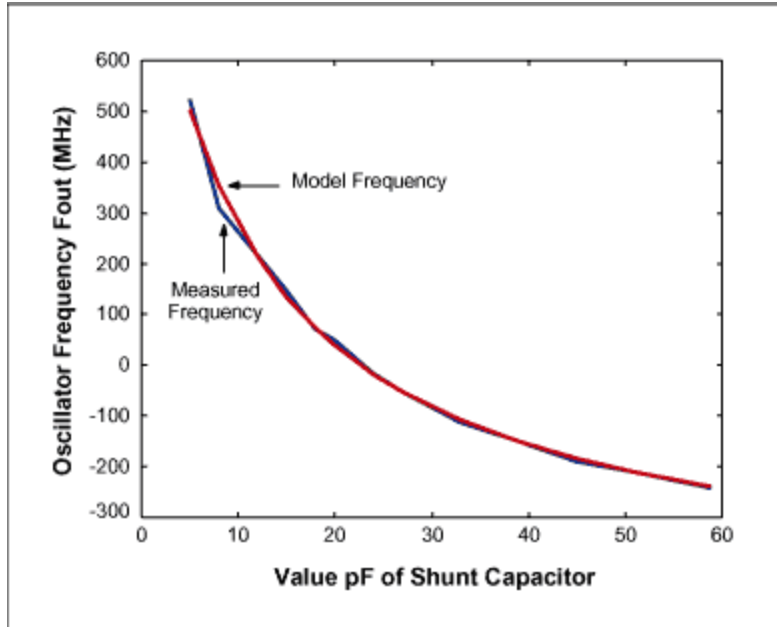


Figure 4a. Least square fit for data set 1 ( $V_{cc}=3.1V$ ) with  $C_0=5.7pF$ .

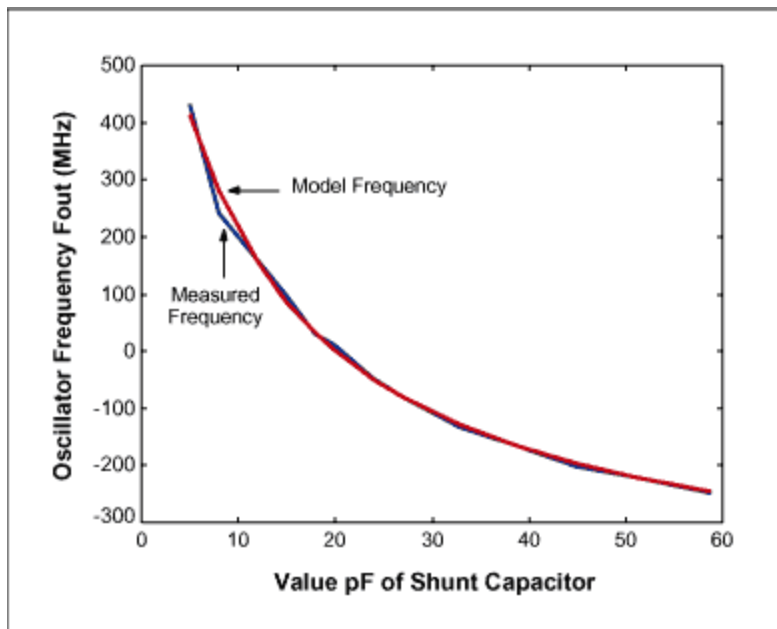


Figure 4b. Least square fit for data set 2 ( $V_{cc}=2.3V$ ) with  $C_0=5.96pF$ .

## Summary

In this application note, we have shown a test setup for measuring the oscillation frequency of a quartz crystal and a method to estimate the parameters of the crystal's resonator model. Real measurements reveal how oscillation frequency varies with loading capacitance.

We introduced a numerical approach based on measured data, to estimate the parameters of the crystal's resonator circuit model. As shown in Figure 4, the model fits the measured data closely with a root of mean square error (RMS) of 13-14ppm. Clock generator designers can use the model to

determine the shunt capacitor values for a required frequency. System and circuit design engineers can use the model for system behavior simulations.

## Reference

1. Norman Bujanos, "Choosing the Right Crystal for Your Oscillator", EDN, Feb., 1998, pp. 66-70.
2. James Northcutt, "Specifying Crystal for Use in VCXOs and TCXOs for Wireless Designs", Wireless Design and Development, Feb., 1998.

---

### More Information

For Technical Support: <http://www.maximintegrated.com/support>

For Samples: <http://www.maximintegrated.com/samples>

Other Questions and Comments: <http://www.maximintegrated.com/contact>

---

Application Note 2127: <http://www.maximintegrated.com/an2127>

APPLICATION NOTE 2127, AN2127, AN 2127, APP2127, Appnote2127, Appnote 2127

Copyright © by Maxim Integrated Products

Additional Legal Notices: <http://www.maximintegrated.com/legal>