

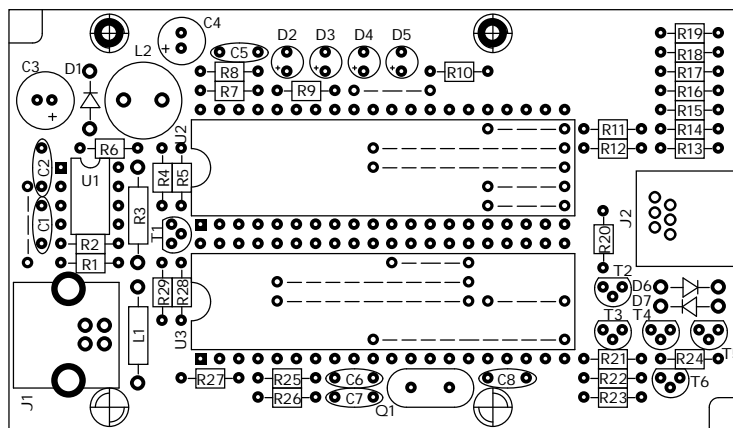
Titlu: Icd2_Usb_4550

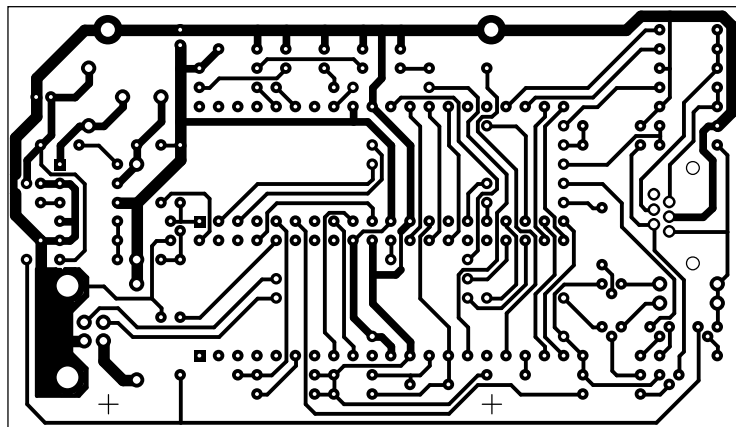
Nr. Document: 000

Revizia: **B**

6/13/2006

Pagina: 2/2





Icd2_Usb_4550

Copyright : PiCS

Document No : 000

Revision : B

Number of Parts : 58

29 Resistors

Quantity:	References	Value
■ 5	R1, R20-R22, R24	20k
■ 3	R2, R14, R25	2.2k
■ 1	R3	0.47
■ 9	R4, R5, R11, R12, R15, R17, R23, R26, R28	4.7k
■ 8	R6-R10, R16, R18, R19	330
■ 2	R13, R27	6.8k
■ 1	R29	10k

8 Capacitors

Quantity:	References	Value
■ 1	C1	220pF
■ 2	C2, C5	100nF
■ 1	C3	220μF/25v
■ 1	C4	100μF/16v
■ 2	C6, C7	27pF
■ 1	C8	330nF

3 Integrated Circuits

Quantity:	References	Value
■ 1	U1	MC34063A
■ 1	U2	PIC16F877A-I/P
■ 1	U3	PIC18F4550-I/P

1 Transistors

Quantity:	References	Value
■ 1	Q1	20Mhz

7 Diodes

Quantity:	References	Value
■ 3	D1, D6, D7	1N5819
■ 4	D2-D5	LED3mm

10 Miscellaneous

Quantity:	References	Value
■ 1	J1	CONN-H4
■ 1	J2	CONN-H6
■ 2	L1, L2	100μH
■ 3	T1, T3, T4	BC547
■ 3	T2, T5, T6	BC557

6/13/2006 11:36:41 AM