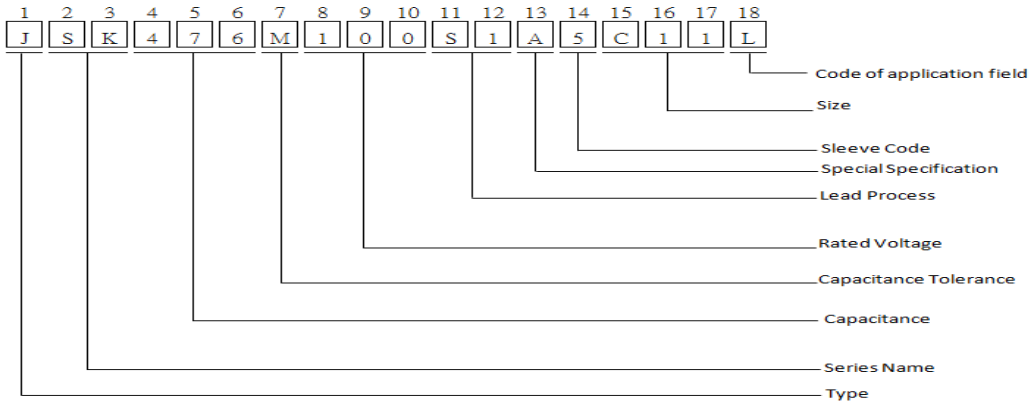


Part Number System



Code 1

Type

Code	Model Type
J	Jamicon Radial Type (PET sleeve)
K	Teapo Radial Type (PET sleeve)
V	SMD (V-chip) Type (Nylon coating)
S	TEAPO Snap-in Type (PET sleeve)
T	JAMICON Snap-in Type (PET sleeve)
H	JAMICON Snap-in Type (No Insulating base, PET sleeve)
P	Conductive Polymer Aluminum Solid Capacitor
N	Screw Type(PVC sleeve)
B	Radial Type special for CP line(PET sleeve)
M	Radial Type 8 φ pitch =2.5mm(PET sleeve)
G	G-LUXON Radial Type (PET sleeve)
R	Conductive Polymer Hybrid Aluminum Electrolytic Capacitors
Z	Teapo Snap-in Type (No Insulating base, PET sleeve),the last code "0" is for G-LUXON Snap-in Type (No Insulating base, PET sleeve)

Code 2~3

Series Name (as content page 2 to page 4)

Code 4~6

Capacitance

Capacitance(uf)	0.47	4.7	47	470	4700	47000	470000	4700000	47000000	470000000
product code	474	475	476	477	478	479	47A	47B	47C	47D

Code 7

Capacitance Tolerance

A : - 8~ + 32%	B : - 5~ + 10%	C : + 10~ + 30%	D : - 40~ + 0%	W : - 15~ + 0%	X : - 15~ + 5%
G : - 30~ + 0%	H : - 5~ + 15%	I : - 20~ + 0%	J : - 5~ + 5%	Q : - 10~ + 30%	R : - 0~ + 20%
M : - 20~ + 20%	N : - 30~ + 30%	O : - 20~ + 10%	P : - 0~ + 30%	K : - 10~ + 10%	L : - 15~ + 15%
S : - 0~ + 50%	T : - 10~ + 50%	U : - 10~ + 75%	V : - 10~ + 20%	E : - 12~ + 20%	F : - 5~ + 20%
Y : - 10~ + 150%	Z : - 20~ + 80%				

Code 8~10

Rated Voltage

Rated Voltage(WV)	2.5	5	6.3	63	100	450
product code	2R5	005	6R3	063	100	450

Code 11~12

Lead Process

Code processing form	Code		Description
	Code 11	Code 12	
Standard	A	1	Screw type standard type
	S	0	Standard SMD type
Ammo tape	T	1	Standard Dip & Snap-in type
		2	Standard ammo tape (pitch 5mm for dia. ~ 13mm)
		4	Ammo tape with straight lead (available for dia. 4~8mm) Ammo formed tape with pitch 2.5mm (available for dia.4~5mm)
Reel tape	R	1	Standard reel tape (pitch 5mm for dia.~ 10mm)
		2	Reel tape with straight lead (available for dia. 4~8mm)
		3	Reel formed tape with pitch 2.5mm (available for dia.4~5mm)
Straight cut	C	3	Straight cut lead with L : 3.2+/-0.5mm
		5	Straight cut lead with L : 4.0+/-0.5mm
		7	Straight cut lead with L : 5.0+/-0.5mm
Kink(Crimp)cut	K	2	Kink cut lead with L : 4.5+/-0.5mm
Formed cut	F	6	Forming cut lead with L : 4.0+/-0.5 (Pitch : 5mm)

Code 13 Special Specification

A	Standard	J	S-protection	S	spacer special DIP special	2	Life & ESR special
B	DF (tanδ)special	K	Above life specified in catalog	T	length of body special fortolerance	3	Life & Impedance special
C	ESR special	L	Pins or Wire diameter	U	Pack special	4	Life & Ripple current
D	Impedance special	M	Customer requirements	V	Sleeve special	5	Life & LC special
E	Ripple current special	N	Pitch special	W	Capacitance special	6	life & rubber cover or
F	LC special	O	LC & ESR or Impedance special	X	DF & LC & ESR or Impedance special	7	DF & ESR or Impedance special
G	GUM or special for capacitor cover plate or non-salient point in bottom	P	Under life specified in catalog	Y	RC & LC & ESR or Impedance special	8	DF & RC special
H	Customer requirements	Q	DF & Ripple current & ESR or Impedance special	Z	Frequency & ESR or Impedance special	9	DF & LC special
I	RC & LC special	R	Shelf is 1000Hrs	1	Life & DF special	0	RC & ESR or Impedance

Code 14 Sleeve Code (please contact us if the sleeve code in the form cannot corresponding with your requirement.)

代碼	Color	JAMICON	TEAPO
1	Dark blue with white	/	SK
5	Black with white printing	NK,SK,TE,TQ,TT,TV,TP,TR,TW,SA,RV,HF,HM,HS,HT,LS,HV,HX,WB,WH,LB,HB,KP,MP,WP,QP,RP,XP,JP,EP,MP	SH,SG,SP,SB,SY,SJ,RN,SQ,AK,ST,TA,SU,TB,LH,LG,LJ,LF,LQ,LM,TE,LS,LK,TT,S5,S7,H5,H7,KP,WP,QP,MP,XP,JP,MA,TP,LA,GA,GB
6	Black with golden printing	TU,WF	TC
C	Green with golden printing	SL,WL,TF	SC,WL
H	Royal blue with golden printing	/	SZ
N	SMD standard pack & POLYMER	CA,CD,CE,CJ,CK,CN,CU,CS,CW,CT,CH,CL,CF,CZ,CB,CP,VP,VC,VB,VS,VA,VD,VQ,FG,FR,FF,FL,FS,FP,FH,FC,FB,FT,YA,XX	XV,LV,MV,AV,PV,RV,WV,GV,FV,SV,DV,YV,EV,XV,HV,NV,VP,VC,VB,VS,VA,VD,VQ,FG,FR,FF,FL,FS,FP,FH,FC,FB,FT,YA,XX
M	Black with blue printing	SH,ST,TK,TC	/
A	Green with black printing	LK,WB	LL
9	Green with silvery printing	MZ	MZ
B	Brown with white printing	TH,TL,HL,LL,HV	TH,GC,GD
Z	Brown with silver printing	TX,TJ,	TX
7	Green with white printing	LT,HT	/

Code 15~17 Case Size (Please contact us if the case size is required and not shown in the table.)

Code 15 Diameter

Code	A	B	C	D	E	F	G	8	H	9
Case size	3	4	5	5.5	6.3	7.3	8	8.2	10	10.2
Code	J	K	L	6	M	N	7	P	Q	R
Case size	12	12.5	13	14.5	16	18	18.5	20	22	25
Code	S	T	U	V	W	X	Y	Z	1	
Case size	30	35	40	45	51	64	77	90	101	

Code 16~17 Length

For ECAP-DIP & POLYMER-DIP & SNAP-IN & SCREW TYPE :

Code	05	07	09	10	1A	11	1B	12	1C	13
Length	05	07	09	10	10.5	11	11.5	12	12.5	13
Code	14	15	16	17	18	20	25	30	3B	32
Length	14	15	16	17	18	20	25	30	31.5	32
Code	35	3F	36	40	45	50	55	60	65	70
Length	35	35.5	36	40	45	50	55	60	65	70
Code	75	80	90	96	A0	B5	C1	D0	E4	F5
Length	75	80	90	96	100	115	121	130	144	155

For V-CHIP SMD

Code	01	02	03	04	05	06	07	08
Length	5.4	6.2	10.2	7.7	13.5	16、16.5	12.5	5.8

For POLYMER SMD

Code	A1	A2	A3	A4	A5	A6	A7	A8	A9
Length	5.8	6.0	6.7	7.7	10.2	10.4	12.0	12.2	9.0

Code 18 Code of application field

H: Intelligent instrument	R:Medical	X:Weekly date code	6:Industrial equipment / inverter
K:TEAPO	S:Auto grade	0:G.LUXON	L : JAMICON

Taping specifications for Raidal Type:

Fig.1 : Code T1/R1 : Ammo / Reel Tape ($\Phi 4 - \Phi 6.3$)

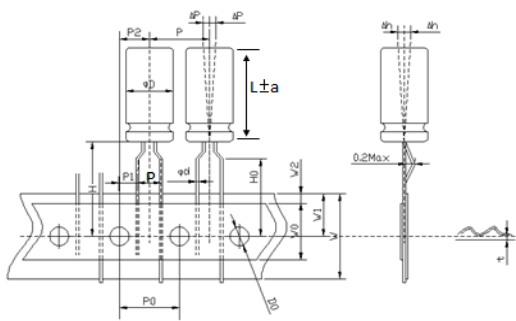


Fig.2 : Code T1/R1 : Ammo / Reel Tape ($\Phi 8$)($P3=2.0\sim 2.7, \theta=110^\circ \pm 15^\circ$)

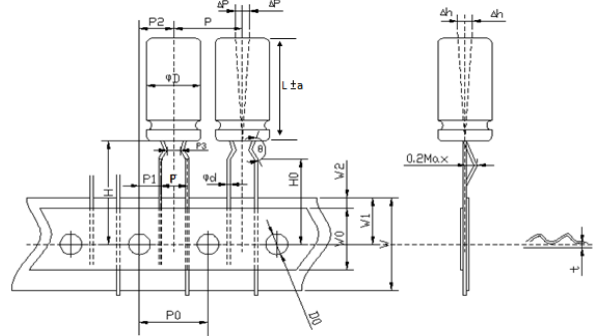


Fig.3 : Code T1/R1 : Ammo / Reel Tape ($\Phi 10$)

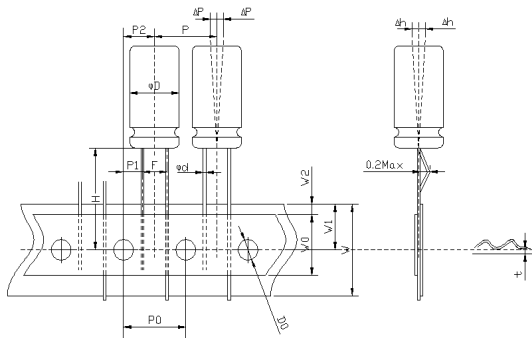


Fig.4 : Code T1 : Ammo Tape ($\Phi 13\sim \Phi 18$)

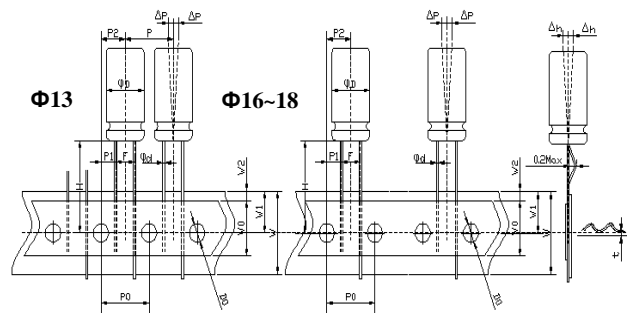


Fig.5 : Code T2/R2 , $\Phi 4 \sim \Phi 8$

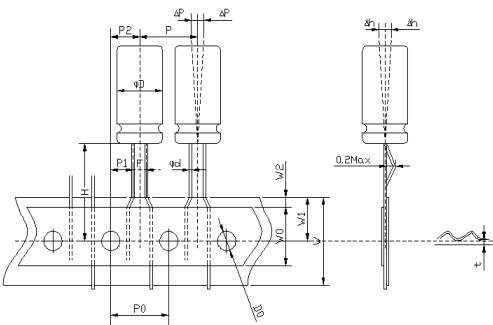
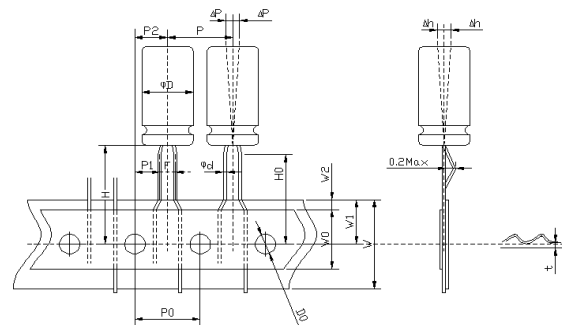


Fig.6 : Code T4/R3 : Ammo / Reel Formed Tape ($\Phi 4\sim \Phi 5$ / pitch 2.5mm)



unit : mm

Code	Symbol	ϕd	P	P0	P1	P2	F	W	W0	W1	W2	H	H0	D0	ΔP	Δh	t	
	Tolerance	± 0.05	± 1.0	± 0.3	± 0.5	± 1.0	+0.6/ - 0.2	± 0.5	min	± 0.5	max	± 0.5	± 0.5	± 0.3	max	max	± 0.3	
T1/R1	4x5	0.45	12.7	12.7	3.85	6.35	5.0	18.0	8.0	9.0	2.0	18.5	16.0	4.0	0.2	0.2	0.6	
	5x5~11	0.45or0.5	12.7	12.7	3.85	6.35	5.0	18.0	8.0	9.0	2.0	18.5	16.0	4.0	0.2	0.2	0.6	
	6.3x5~11	0.45or0.5	12.7	12.7	3.85	6.35	5.0	18.0	8.0	9.0	2.0	18.5	16.0	4.0	0.2	0.2	0.6	
	Tolerance	± 0.05	± 1.0	± 0.3	± 0.7	± 1.0	+0.6/ - 0.2	± 0.5	min	± 0.5	max	± 0.5	± 0.5	± 0.3	max	max	± 0.3	
	8x5~30	0.45~0.6	12.7	12.7	3.85	6.35	5	18.0	8.0	9.0	2.0	18.5	16.0	4.0	0.2	0.2	0.6	
	Tolerance	± 0.05	± 1.0	± 0.3	± 0.5	± 1.0	+0.6/ - 0.2	± 0.5	min	± 0.5	max	± 0.5	—	± 0.3	max	max	± 0.2	
	10x10~30	0.6	12.7	12.7	3.85	6.35	5	18.0	8.0	9.0	2.0	18.5	—	4.0	0.2	0.2	0.7	
	Tolerance	± 0.05	± 1.0	± 0.3	± 0.7	± 1.3	+0.6/ - 0.2	± 0.5	min	± 0.5	max	± 0.5	—	± 0.3	max	max	± 0.3	
	12.5x15~25	0.6	15	15	5.00	7.50	5.0	18.0	8.0	9.0	2.0	18.5	—	4.0	0.2	0.2	0.7	
	13x13~40	0.6	15	15	5.00	7.50	5.0	18.0	8.0	9.0	2.0	18.5	—	4.0	0.2	0.2	0.7	
16x16~40	0.8	30	15	3.75	7.50	7.5	18.0	8.0	9.0	2.0	18.5	—	4.0	0.2	0.2	0.7		
18x20~32	0.8	30	15	3.75	7.50	7.5	18.0	8.0	9.0	2.0	18.5	—	4.0	0.2	0.2	0.7		
T2/R2	Code	Symbol	Φd	P	P0	P1	P2	F	W	W0	W1	W2	H	H0	D0	Δp	—	t
	Tolerance	± 0.05	± 1.0	± 0.5	± 0.3	± 1.0	+0.6/0.2	± 0.5	min	± 0.5	max	± 0.5	—	± 0.3	max	—	± 0.2	
	4x5~7	0.45	12.7	12.7	5.6	6.35	1.5	18	8	9	2.0	18.5	—	4	0.2	—	0.6	
	5x5~11	0.45or0.5	12.7	12.7	5.35	6.35	2	18	8	9	2.0	18.5	—	4	0.2	—	0.6	
	6.3x5~11	0.45or0.5	12.7	12.7	5.1	6.35	2.5	18	8	9	2.0	18.5	—	4	0.2	—	0.6	
8x5~20	0.6	12.7	12.7	4.6	6.35	3.5	18	8	9	2.0	18.5	—	4	0.2	—	0.6		
T4/R3	Code	sign	Φd	P	P0	P1	P2	F	W	W0	W1	W2	H	H0	D0	ΔP	Δh	t
	Tolerance	± 0.05	± 1.0	± 0.3	± 0.5	± 1.0	+0.6/ - 0.2	± 0.5	min	± 0.5	max	± 0.5	± 0.5	± 0.3	max	max	± 0.3	
	4x5~4x7	0.45	12.7	12.7	5.1	6.35	2.5	18.0	8.0	9.0	2.0	18.5	17.0	4.0	0.2	0.2	0.6	
5x5~5x11	0.45or0.5	12.7	12.7	5.1	6.35	2.5	18.0	8.0	9.0	2.0	18.5	17.0	4.0	0.2	0.2	0.6		

Cut/Formatted Lead For Radial Lead Type :

Shape	Suitable size	Shape	Suitable size
Code C5 : Straight Cut 	ΦD=4~18	Code K2 : Kink cut, & Crimping 	ΦD=4~18
Code F* : Molding Truncation type 	ΦD=4~8	Code V*/O*/Z*/X* : Horizontal processing 	ΦD=4~18

unit : mm

C	Code	1	2	3	4	5	6	7	8	9	A	B	C	D	E	F	G	H
	L	2.5	2.8	3.2	3.4	4.0	4.5	5.0	5.5	6.5	7.0	8.0	10.0	3.6	6.0	3.2	4.2	2.4
	Code	J	K	L	M	N	P	Q	R	S	T	U	V	X	Y	Z	W	
	L	4.2	3.7	12.0	2.0	2.2	2.5	13.5	9.0	20.0	16.0	18.0	3.0	13.0	12.5	15.0	3.1	

P	Code	1	2	3					
	L	11.0	3.8	14.0					
K	Code	1	2	3	4	5	6	7	9
	L	3.2	4.5	5.0	3.5	4.0	4.3	3.5	3.2
	Code	A	B	D	E	F	H	K	L
	L	3.3	3.6	3.6	3.3	18.0	7.0	6.8	4.0

X	代碼	3
	L1	1.8±0.2
	L2	3.0±0.2

F	Code	1	2	3	4	5	6	7	8	9	A	B	C	D	E	F	G	H
	L	3.0	3.1	3.2	3.4	3.5	4.0	4.8	4.5	3.2	6.0	4.3	5.0	3.0	3.6	5.0	3.0	6.5
	Code	J	K	L	M	N	O	P	Q	R	S	T	U	V	W	Z	I	
	L	3.7	2.5	2.2	1.5	2.9	3.7	7.0	4.2	9.0	2.8	3.7	2.4	4.0	3.1	4.5	4.0	

V	Process number	1	2	6	J	Q	F	8	N
	L1	1.25±0.25	2.5±0.5	2.5±0.25	1.0±0.5	1.5±0.5	1.25±0.25	2.0±0.5	2.2±0.5
	L2	2.6±0.3	3.5±0.5	4.1±0.5	3.85±0.25	3.0±0.5	11.5±0.5	4.0±0.5	<3.6
	Process number	5	P	3	Y	R	G	9	Z
	L1	2.5±0.25	5.0±0.5	2.5±0.25	1.0±0.5	1.5±0.5	1.0±0.2	2.0±0.5	2.2±0.5
	L2	3.25±0.25	3.25±0.25	4.1±0.5	3.85±0.25	3.0±0.5	2.4±0.3	4.0±0.5	<3.6
	Process number	B	S	U	H	D	O	E	M
	L1	2.5±0.5	2.0±0.5	3.5±0.3	1.0±0.2	2.0±0.5	2.5±0.5	1.5±0.2	3.3±0.2
	L2	3.3±0.5	3.5±0.3	5.0 +0,-0.5	2.4±0.3	6.7±0.5	7.0±0.5	2.25±0.25	3.25±0.25
	Process number	X	W	V	7	C	A	4(Don't cut the foot)	T
	L1	2.5±0.5	2.0±0.5	1.0±0.5	2.0±0.5	<1.6(containΦd)	2.5±0.3	4.0±0.5	<2.0
	L2	5.8±0.5	2.5±0.5	3.5±0.3	3.2±0.4	2.0±0.5	3.7±0.3	15.5±0.5	9.3±0.5

O	Process number	1	2	5	8	B	G	H	M
	L1	2.0±0.3	1.±0.2	1.2±0.25	1.0±0.3	1.5±0.5	1.5±0.5	1.5±0.5	3.0±0.5
	L2	3.7±0.3	3.7±0.3	2.0±0.2	2.3±0.2	6.5±0.2	3.2±0.2	5.0±0.2	6.0±0.5

Z	Process number	3	C	I	U	4	6	7	8
	L1	2.0+0/0.5	2.5±0.5	1.0±.2	1.2±.2	2.5±0.5	1.0±0.2	4.0±.5	2.5±0.3
	L2	3.85±0.25	4.6±.5	3.0±.2	2.8±.3	3.85±0.25	3.80±0.2	3.4±0.5	3.5±.3

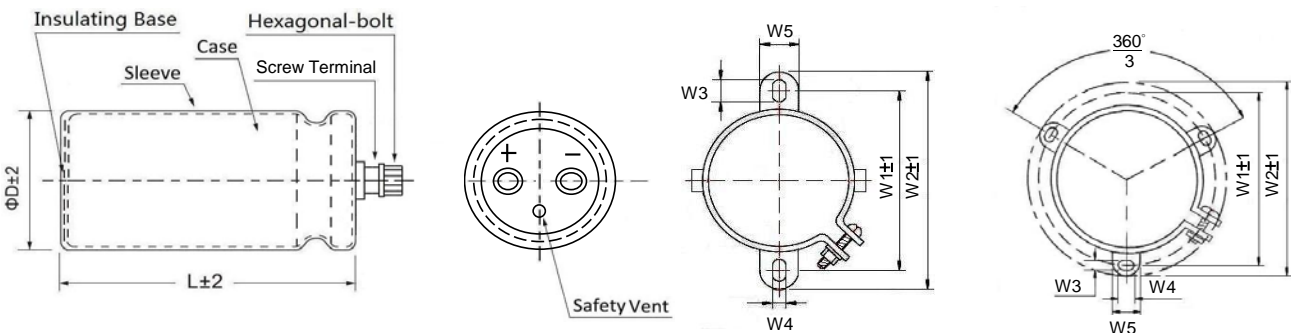
Note: if the above size can not satisfied your need please contact us.

Available Terminals For SNAP-IN Type :

<p>Standard product code: S1G(the NO.13 code is G)</p> <p>apply to size $\Phi 22\sim 35$</p>	<p>Standard product code: S1A(the NO.13 code is A)</p> <p>apply to size $\Phi 22\sim 35$</p>
<p>Code: LL</p> <p>apply to size $\Phi 25\sim 35$</p>	<p>Three terminal code: L3</p> <p>apply to size $\Phi 25\sim 35$</p>
<p>Horizontal code: V*</p> <p>apply to size $\Phi 22\sim 35$</p>	<p>Four terminal code: L4</p> <p>apply to size $\Phi 35\sim 45$</p>
<p>代码: LT</p> <p>apply to size $\Phi 22\sim 35$</p>	<p>代码: LC</p> <p>apply to size $\Phi 35\sim 45$</p>

Available Terminals For Screw Type :

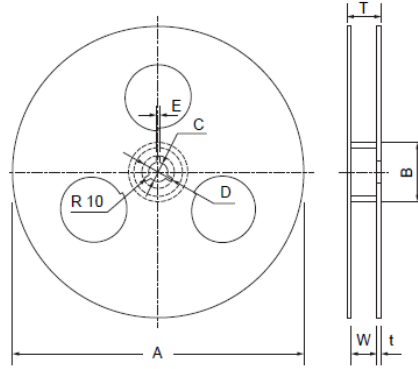
Standard product code: A1



ΦD	W1	W2	W3	W4	W5
35	48.0	58.0	6.0	3.5	10
51	63.5	73.0	5.0	7.0	14
64	76.2	85.1	5.0	7.0	14
77	88.9	98.4	5.0	7.0	14
90	101.6	111.1	5.0	7.0	14

Packaging Specification

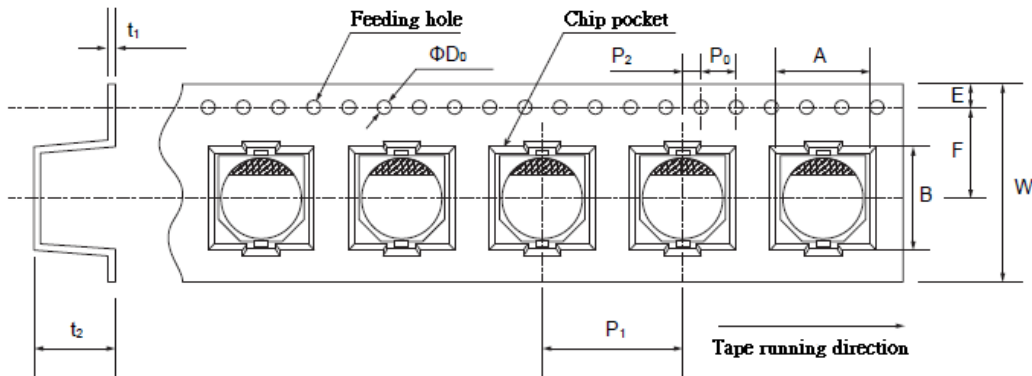
1.SMD Packing Specification



Size Unit : mm

Size	A	B	C	D	E	W	T	t
4Φ ~ 5Φ	380±2	84min	13.0±0.5	42	2.0±0.5	14±1	18±1	2.0
6.3Φ ~ 8×6.7	380±2	84min	13.0±0.5	42	2.0±0.5	18±1	22±1	2.0
8×10.2 ~ 10Φ	380±2	84min	13.0±0.5	42	2.0±0.5	26±1	30±1	2.0
12.5Φ	380±2	84min	13.0±0.5	42	2.0±0.5	32±1	36±1	2.0
16.0Φ	380±2	84min	13.0±0.5	42	2.0±0.5	44±1	48±1	2.0

① Reel Tape



Size Unit : mm

Symbol SizeDxL	W	A	B	Po±0.1	P1	P2±0.1	F	ΦD0	t1	E	t2
4x5.4	12.0	4.7	4.7	4.0	8.0	2.0	5.5	1.5+0.1-0	0.4	1.75	5.8
5x5.4(5.8*)	12.0	5.7	5.7	4.0	12.0	2.0	5.5	1.5+0.1-0	0.4	1.75	5.8
6.3x5.4(5.8*)	16.0	7.0	7.0	4.0	12.0	2.0	7.5	1.5+0.1-0	0.4	1.75	5.8
6.3x7.7*	16.0	7.0	7.0	4.0	12.0	2.0	7.5	1.5+0.1-0	0.4	1.75	8.3
8x6.2	16.0	8.7	8.7	4.0	12.0	2.0	7.5	1.5+0.1-0	0.4	1.75	6.8
8x10.2(10.4*)	24.0	8.7	8.7	4.0	16.0	2.0	11.5	1.5+0.1-0	0.4	1.75	11.0
10x10.2*(12.2*)	24.0	10.7	10.7	4.0	16.0	2.0	11.5	1.5+0.1-0	0.4	1.75	11.0
12.5x13.5	32.0	13.4	13.4	4.0	24.0	2.0	14.2	1.5+0.1-0	0.4	1.75	14.0
12.5x16.0	32.0	13.4	13.4	4.0	24.0	2.0	14.2	1.5+0.1-0	0.4	1.75	16.2
16.0x16.5	44.0	17.5	17.5	4.0	28.0	2.0	20.2	1.5+0.1-0	0.4	1.75	16.7

② Packaging Specification

Size DxL(mm)	Q'ty per (pcs)	Inner box (pcs)	Measurement (mm)	gross (kg)	Outer carton (pcs)	Measurement (mm)	gross (kg)
4x5.4	2000	20,000	390x195x395	4	40,000	420x410x414	9
5x5.4(5.8*)	1000	10,000	390x195x395	5	20,000	420x410x414	11
6.3x5.4(5.8*)	1000	10,000	390x235x405	5	20,000	420x410x492	12
6.3x7.7*	1000	10,000	390x235x405	7	20,000	420x410x492	14
8x6.2	1000	10,000	390x235x405	7	20,000	420x410x492	15
8x10.2(10.4*)	500	4,000	390x255x405	6	8,000	420x410x530	13
10x10.2*(12.2*)	500	4,000	390x255x405	8	8,000	420x410x530	17
12.5x13.5	200	1,200	390x255x405	5	2,400	420x410x530	13
12.5x16.0	150	900	390x255x405	5	1,800	420x410x530	13
16.0x16.5	125	625	390x255x405	5	1,250	420x410x530	13

Note: product size don't marked with "*" mark is an applicable polymer solid aluminum electrolytic capacitor.

More detailed information please contact our company.

Packaging Specification

2. Conductive Polymer Aluminum Solid Capacitors

① Bulk package : Standard

Classification		Standard		
size ΦDxL(mm)	Vinyl bag Qty (pcs)	Inner box (pcs)	Outer carton (pcs)	gross weight (kg)
5×7.5×9,6.3×5.4	2,000	16,000	32,000	11
5.5×9,6.3×6.3×8	1,000	12,000	24,000	10
6.3×10.5	1,000	10,000	20,000	14
8×8,8×9,8×11.5	500	7,500	15,000	17
10×12.5	200	4,000	8,000	15

② Bulk package : Cutting & Forming

Classification		Cutting & Forming		
size ΦDxL(mm)	Vinyl bag Qty (pcs)	Inner box (pcs)	Outer carton (pcs)	gross weight (kg)
5×7.5×9,6.3×5.4	2,000	10,000	40,000	16
5.5×9,6.3×6.3×8	2,000	10,000	40,000	15
6.3×10.5	1,000	7,000	28,000	17
8×8,8×9	500	4,000	16,000	18
8×11.5	500	4,000	16,000	18
10×12.5	200	2,000	8,000	15

③ Ammo Tape (Fig.1)

Classification		Ammo Tape		gross weight
size ΦDxL(mm)	Outer carton (pcs)	Outer carton (pcs)	gross weight (kg)	
6.3Φ	2,000	10,000	8	
8Φ×5-16L	1,000	5,000	7	
10Φ×10~17L	600	3,000	7	

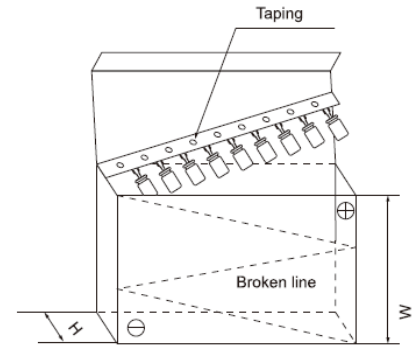


Fig.1

④ Reel Tape (Fig.2)

Classification		Roll Reel braid		gross weight
size ΦDxL(mm)	Inner box (pcs)	Outer carton (pcs)	gross weight (kg)	
6.3Φ	2,000	10,000	6	
8Φ×5-16L	1,600	8,000	12	
10Φ×10~17L	1,000	5,000	14	

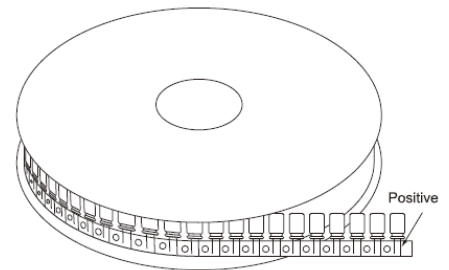


Fig.2

3. Radial Lead Type Aluminum Electrolytic Capacitors

① Bulk package : Standard

Standard					Standard				
size DxL(mm)	Vinyl bag Qty (pcs)	Inner box (pcs)	Outer carton (pcs)	gross weight (kg)	size DxL(mm)	Vinyl bag Qty (pcs)	Inner box (pcs)	Outer carton (pcs)	gross weight (kg)
4×5	2,000	24,000	48,000	13	10×14~10×15	200	3,600	7,200	15
4×7	2,000	20,000	40,000	12	10×16~10×18	200	3,600	7,200	15
5×5	2,000	20,000	40,000	11	10×20~10×21	200	3,000	6,000	16
5×7	2,000	16,000	32,000	14	10×22~10×25	200	2,400	4,800	16
5×9~5×11	1,000	12,000	24,000	11	10×26	200	2,400	4,800	17
5×15	1,000	10,000	20,000	13	10×27~10×35	200	1,800	3,600	16
6.3×5	2,000	16,000	32,000	13	12.5×13~12.5×16	100	2,400	4,800	15
6.3×7	2,000	12,000	24,000	11	12.5×20~12.5×22	100	1,800	3,600	15
6.3×9~6.3×14	1,000	10,000	20,000	14	12.5×23~12.5×26	100	1,200	2,400	13
6.3×15~6.3×17	1,000	10,000	20,000	14	12.5×30	100	1,200	2,400	15
8×5~8×7	500	10,000	20,000	14	13×13~13×16	100	2,400	4,800	15
8×9~8×12	500	7,500	15,000	16	13×18~13×21	100	1,800	3,600	16
8×14~8×15	500	5,000	10,000	13	13×24~13×26	100	1,200	2,400	12
8×16	500	5,000	10,000	14	13×30	100	1,200	2,400	13
8×20~8×25	200	4,000	8,000	14	13×35~13×36	100	1,000	2,000	14
10×9~10×13	200	4,000	8,000	14	13×38~13×40	100	800	1,600	13

② Bulk package : Cutting & Forming

Cutting & Forming					Cutting & Forming				
size ΦDxL(mm)	Vinyl bag Qty (pcs)	Inner box (pcs)	Outer carton (pcs)	gross weight (kg)	size ΦDxL(mm)	Vinyl bag Qty (pcs)	Inner box (pcs)	Outer carton (pcs)	gross weight (kg)
4×5	2,000	40,000	80,000	13	6.3×7	2,000	20,000	40,000	18
4×7	2,000	32,000	64,000	15	6.3×9~6.3×14	1,000	14,000	28,000	19
5×5	2,000	32,000	64,000	14	6.3×15~6.3×17	1,000	10,000	20,000	15
5×7	2,000	32,000	64,000	17	8×5~8×7	500	8,000	16,000	12
5×9~5×11	1,000	20,000	40,000	17	8×9~8×12	500	8,000	16,000	15
5×15	1,000	14,000	28,000	14	8×14~8×15	500	6,000	12,000	15
6.3×5	2,000	20,000	40,000	17	8×16	200	4,000	8,000	11

② Bulk package : Cutting & Forming

Classification		Cutting & Forming			Classification		Cutting & Forming		
size ΦDxL(mm)	Vinyl bag Qty (pcs)	Inner box (pcs)	Outer carton (pcs)	gross weight (kg)	size ΦDxL(mm)	Vinyl bag Qty (pcs)	Inner box (pcs)	Outer carton (pcs)	gross weight (kg)
8x20~8x25	200	4,000	8,000	13	12.5x23~12.5x26	200	1,200	2,400	12
10x9~10x13	200	4,000	8,000	13	12.5x30	100	1,000	2,000	11
10x14~10x15	200	4,000	8,000	15	13x13~13x16	200	1,600	3,200	11
10x16~10x18	200	3,200	6,400	14	13x18~13x21	200	1,200	2,400	11
10x20~10x21	200	2,800	5,600	13	13x24~13x26	200	1,200	2,400	11
10x22~10x25	200	2,400	4,800	15	13x30	100	1,000	2,000	13
10x26	200	1,600	3,200	13	13x35~13x36	100	600	1,200	9
10x27~10x35	200	1,600	3,200	14	13x38~13x40	100	600	1,200	12
12.5x13~12.5x16	200	1,600	3,200	11	16x15~16x20	200	1,000	2,000	14
12.5x20~12.5x22	200	1,200	2,400	10	18x15~18x20	200	1,000	2,000	17

③ For lattice bar type packing of standard & Cutting & Forming (Fig.3)

size		Standard		size		Cutting & Forming	
size ΦDxL(mm)	Inner box (pcs)	Outer carton (pcs)	gross weight (kg)	size ΦDxL(mm)	Inner box (pcs)	Outer carton (pcs)	gross weight (kg)
8φ×50~60L	1000	2000	10	8φ×30~45L	1000	4000	13
10φ×30~45L	700	2100	16	8φ×46~50L	1000	3000	14
10φ×46~60L	700	1400	13	10φ×30~45L	700	2800	15
12.5φ×35~45L	460	1380	12	10φ×46~60L	700	2100	16
12.5φ×50~60L	460	920	13	12.5φ×40~45L	460	1840	13
16φ×15~20L	300	1200	9	12.5φ×46~55L	460	1380	12
16φ×21~26L	300	900	8	16φ×21~30L	300	1200	13
16φ×27~32L	300	900	9	16φ×31~45L	300	1200	16
16φ×33~40L	300	900	14	18φ×21~30L	250	1000	13
16φ×45L	300	600	12	18φ×31~45L	250	1000	19
18φ×15~20L	250	1000	9	18φ×50L	250	750	16
18φ×21~45L	250	750	14	22φ×25~30L	160	640	11
18φ×50L	250	500	11	22φ×31~45L	160	640	16
22φ×25~45L	160	480	13	22φ×50L	160	480	13
22φ×50L	160	320	11				

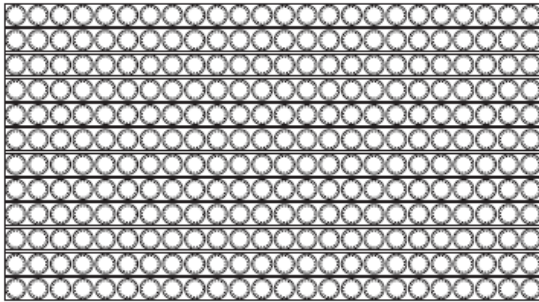


Fig.3

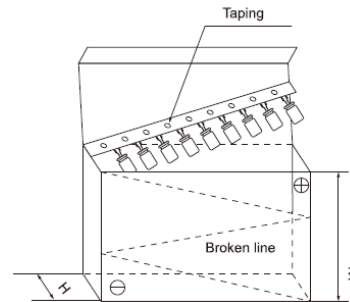


Fig.4

④ For Taping Ammo & Reel(Fig.4)

Classification		Ammo Tape					
size ΦDxL(mm)	Inner box (pcs)	Outer carton (pcs)	gross weight (kg)	size ΦDxL(mm)	Inner box (pcs)	Outer carton (pcs)	gross weight (kg)
4φ×5~7L	3000	15000	5	12.5φ×12.5~31L	500	2000	14
5φ×5~15L	2600	13000	8	13φ×13~31L	500	2000	14
6.3φ×5~17	2000	10000	8	12.5φ×35~41L	500	1500	12
8φ×5~17L	1200	6000	10	13φ×35~41L	500	1500	12
8φ×18~30L	1200	4800	13	16φ×15~32L	300	1200	14
10φ×9~17L	800	4000	10	16φ×35~40L	300	900	13
10φ×18~32L	800	3200	11	18φ×16~32L	250	1000	16
10φ×35L	800	2400	14	18φ×35~35.5L	250	750	14

⑤ Roll Reel braid(Fig.5)

Classification		Ammo Tape	
size ΦDxL(mm)	quantity (pcs/box)	quantity (pcs/box)	gross weight (kg/box)
4x5~7L	3,000	15,000	6
5x5~11L	2,400	12,000	8
6.3x5~11L	2,000	10,000	9
8x5~16L	1,600	8,000	12
8x20L	1,000	5,000	12
10x10~16L	1,200	6,000	13
10x17~20L	1,000	5,000	12

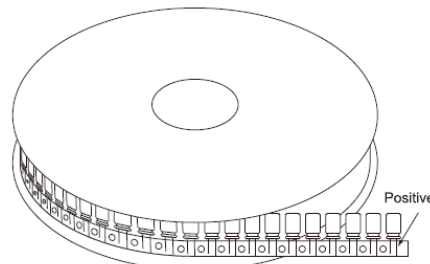


Fig.5

4. SNAP-IN Type Aluminum Electrolytic Capacitors(Fig.6)

size	weighe	inner box	outer carton
$\Phi D \times L(\text{mm})$	(g/pcs)	(pcs)	(pcs)
22x25 ~ 30	20 ~ 25	100	800
22x35 ~ 50	25 ~ 30	100	600
25x25 ~ 30	25 ~ 30	100	800
25x35 ~ 50	30 ~ 35	100	600
25x55~ 70	38.5~62	100	400
30x20 ~ 30	30 ~ 35	50	400
30x35 ~ 50	35 ~ 40	50	300
30 x 55~70	45~50	50	200
35x25 ~ 30	40 ~ 45	40	320
35x35 ~ 50	45 ~ 50	40	240
35x55 ~ 70	55~70	40	160

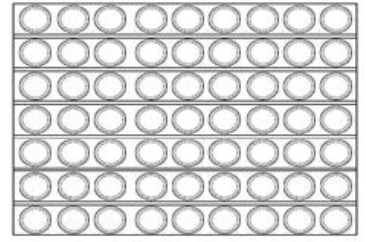


Fig.6

5. SCREW Type Aluminum Electrolytic Capacitors(Fig.7)

size	outer carton
$\Phi D \times L(\text{mm})$	(pcs)
35x50~100	42
51x70~115	40
64x96~115	15
77x100~236	15
90*105~236	12

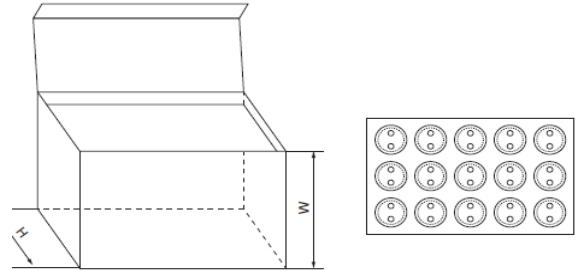


Fig.7