

JVC

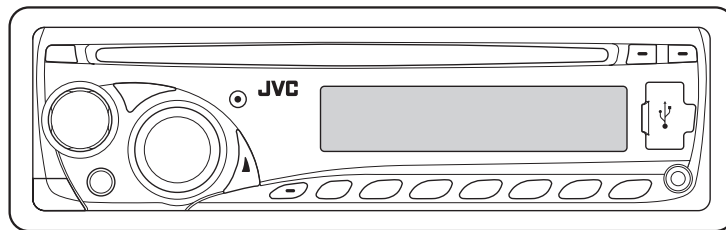
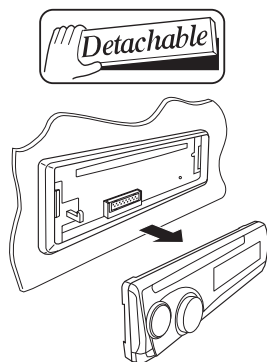
SCHEMATIC DIAGRAMS

CD RECEIVER

KD-PDR41E, KD-PDR41EX, KD-PDR41EY, KD-G647EE

CD-ROM No.SML200802

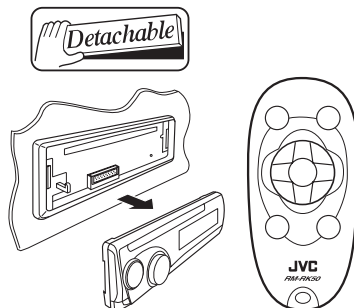
KD-PDR41



WMA MP3



KD-G647



WMA MP3



Lead free solder used in the board (material : Sn-Ag-Cu, melting point : 219 Centigrade)
Lead free solder used in the board (material : Sn-Cu, melting point : 230 Centigrade)

Contents

Block diagram	2-1
Standard schematic diagrams	2-2
Printed circuit boards	2-5 to 7

Safety precaution

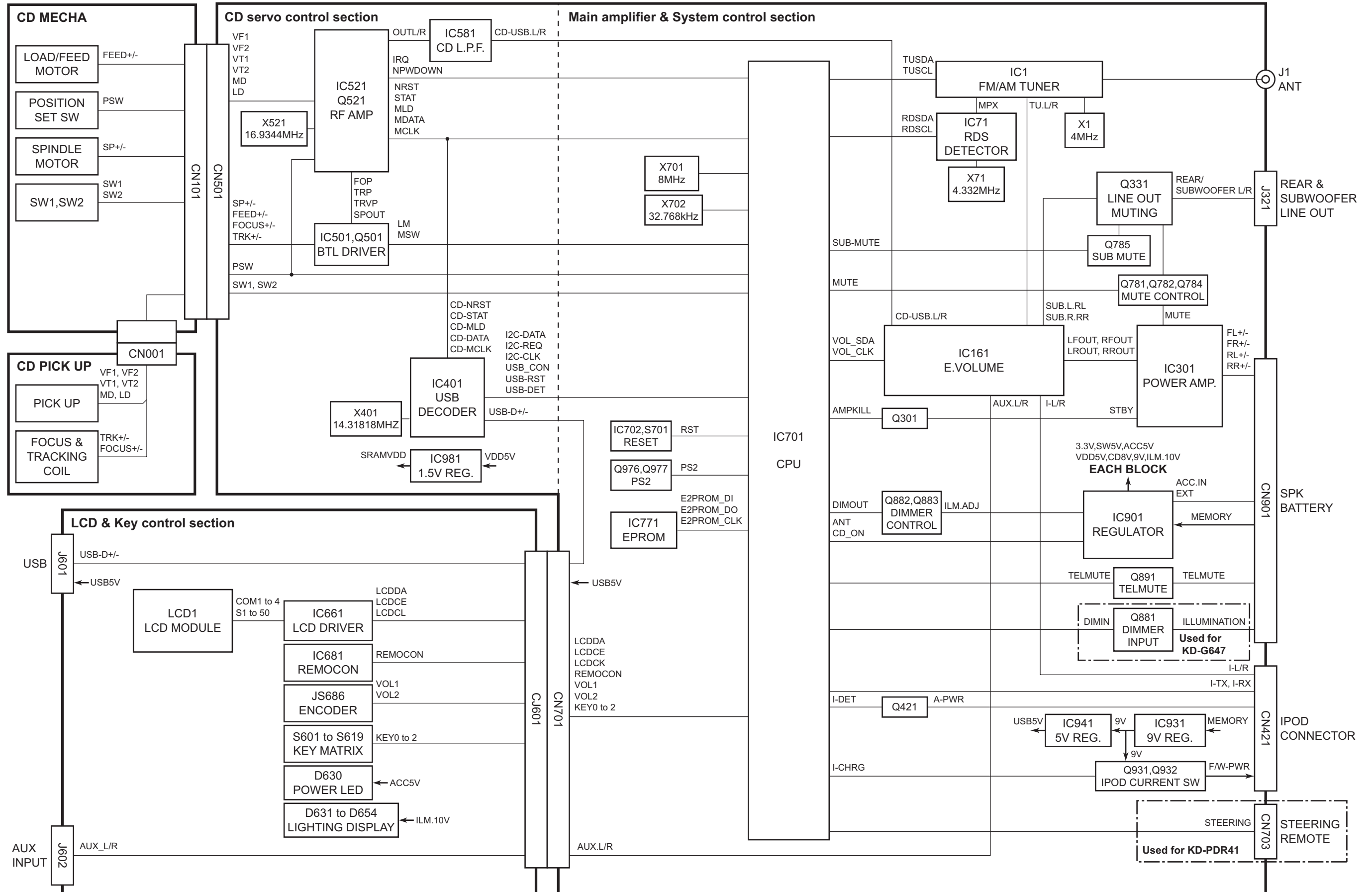


CAUTION Burrs formed during molding may be left over on some parts of the chassis. Therefore, pay attention to such burrs in the case of performing repair of this system.



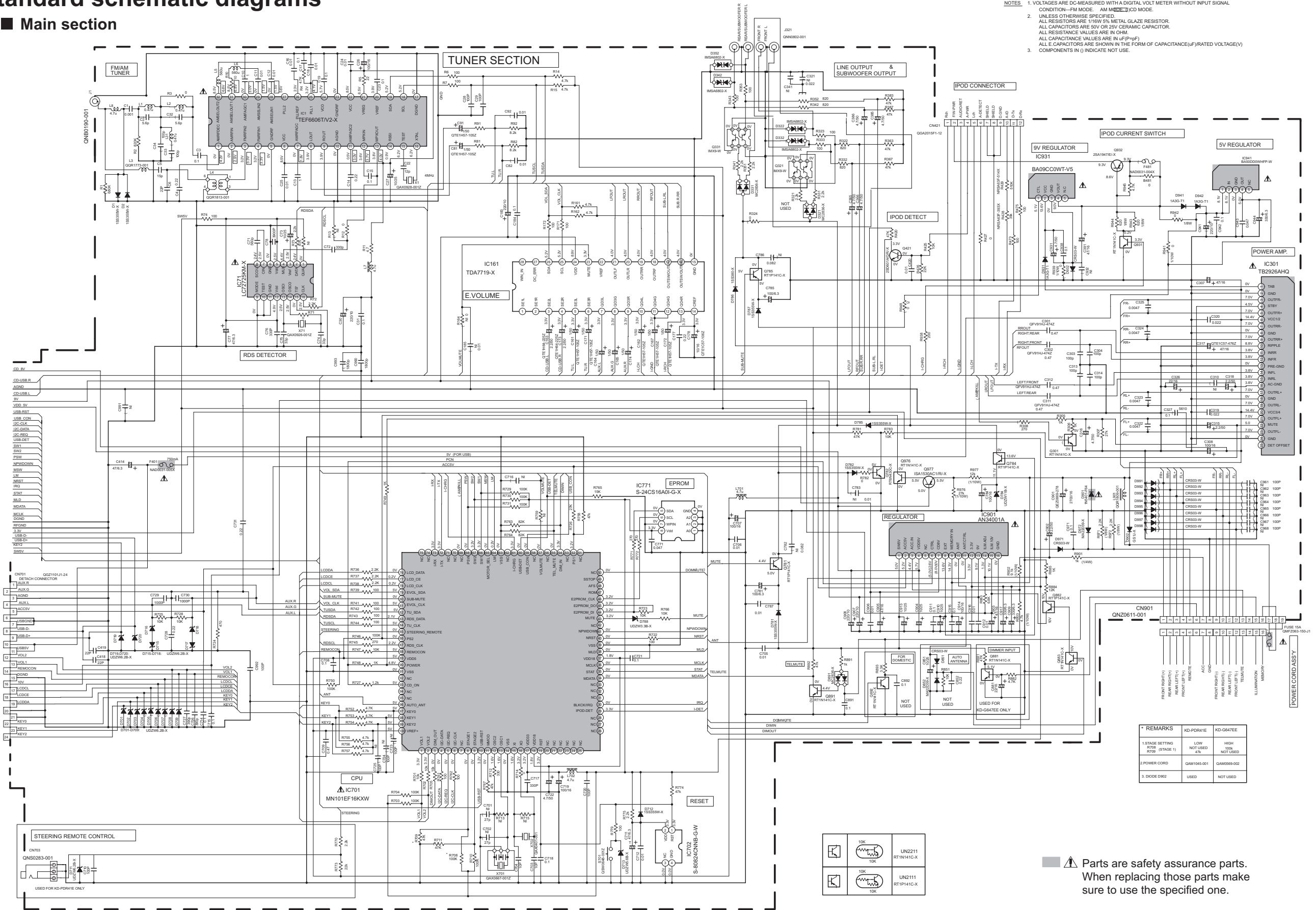
CAUTION Please use enough caution not to see the beam directly or touch it in case of an adjustment or operation check.

Block diagram



Standard schematic diagrams

Main section



NOTES: 1. VOLTAGES ARE DC-MEASURED WITH A DIGITAL VOLT METER WITHOUT INPUT SIGNAL. CONDITION - FM MODE. AM MODE (D) CD MODE.
 2. UNLESS OTHERWISE SPECIFIED, ALL RESISTORS ARE 1/16W 5% METAL GLAZE RESISTOR. ALL CAPACITORS ARE 50V OR 25V CERAMIC CAPACITOR. ALL RESISTANCE VALUES ARE IN OHM. ALL CAPACITANCE VALUES ARE IN uF(P=PF). ALL E-CAPACITORS ARE SHOWN IN THE FORM OF CAPACITANCE(uF)/RATED VOLTAGE(V). COMPONENTS IN () INDICATE NOT USE.

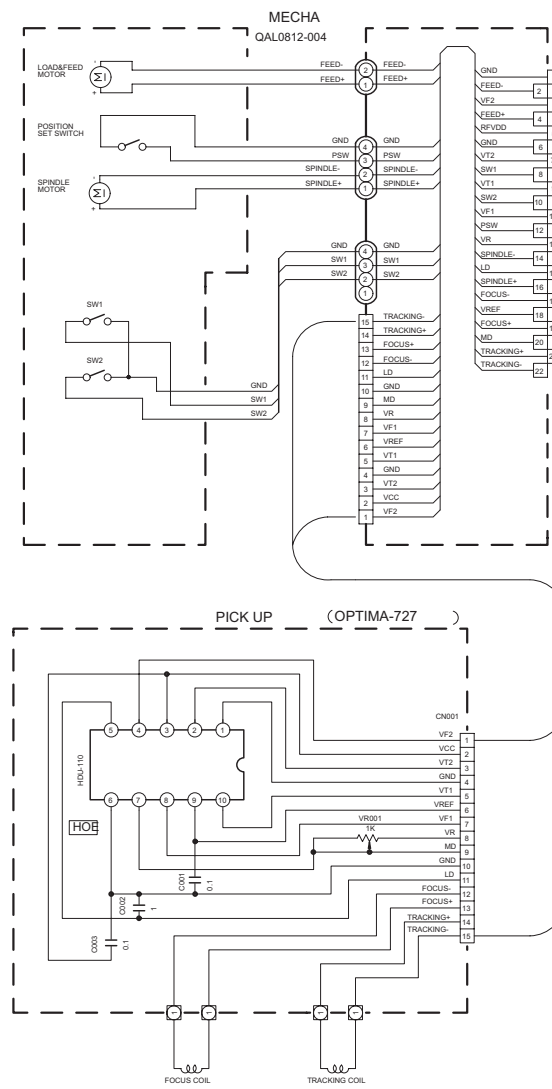
MAIN PWB: GEB10232A

CD section

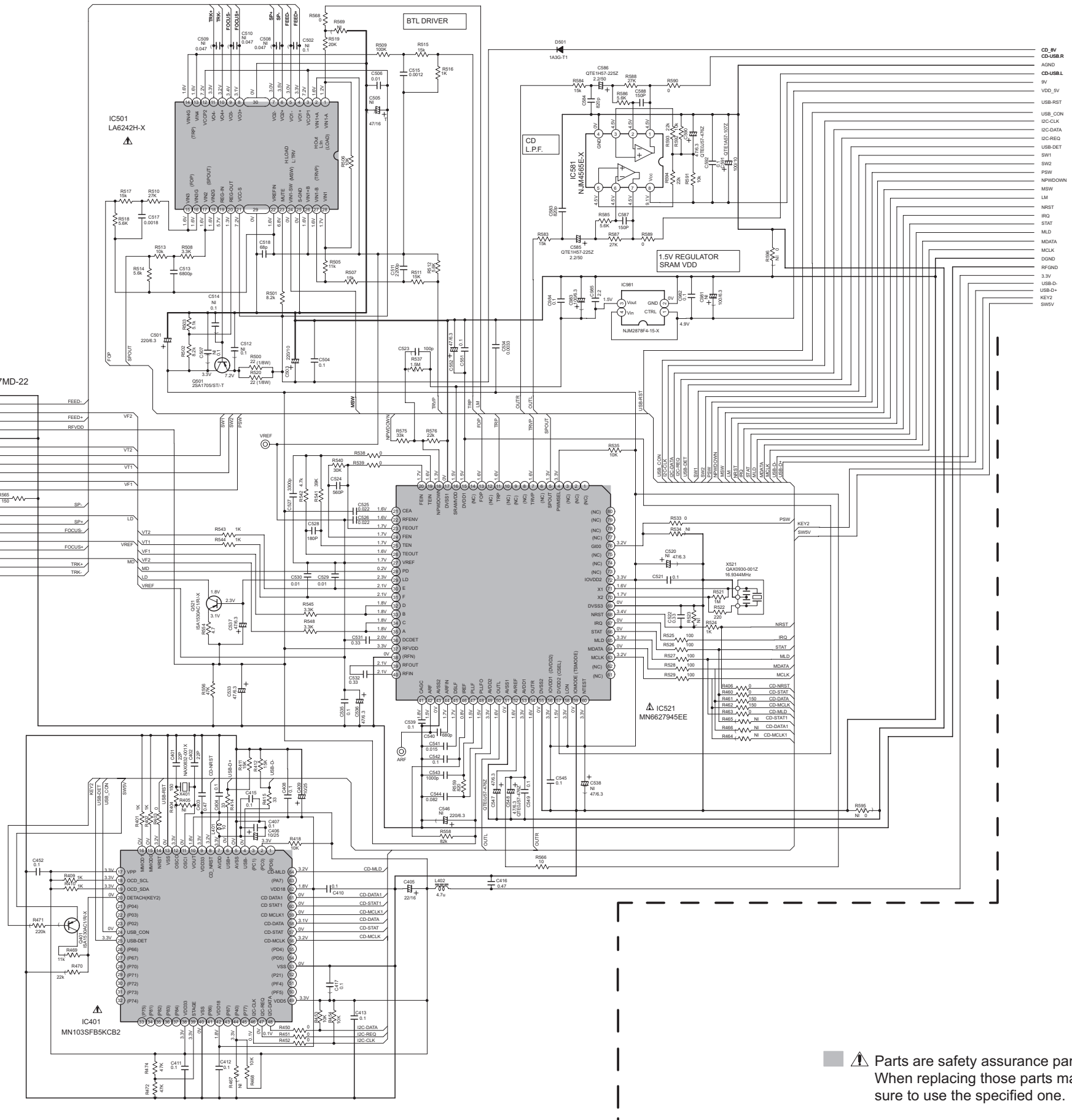
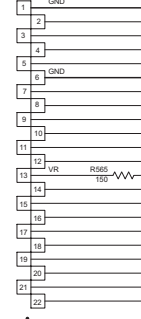
MAIN PWB: GEB10232A

NOTES:

- VOLTAGE ARE DC-MEASURED WITH A DIGITAL VOLTMETER WITHOUT INPUT SIGNAL CONDITION -- CD MODE.
- UNLESS OTHERWISE SPECIFIED:
 ALL RESISTOR ARE 1/16W 5%METAL GLAZE RESISTOR.
 ALL CAPACITOR ARE 50V OR 25V CERAMIC CAPACITOR.
 ALL RESISTANCE VALUES ARE IN OHM.
 ALL CAPACITANCE VALUES ARE IN nF(pF).
 ALL INDUCTANCE VALUES ARE IN uH.
 ALL E. CAPACITORS ARE SHOWN IN THE FORM OF CAPACITANCE/(RATED VOLTAGE) (V)



CN501 QGB207MD-22

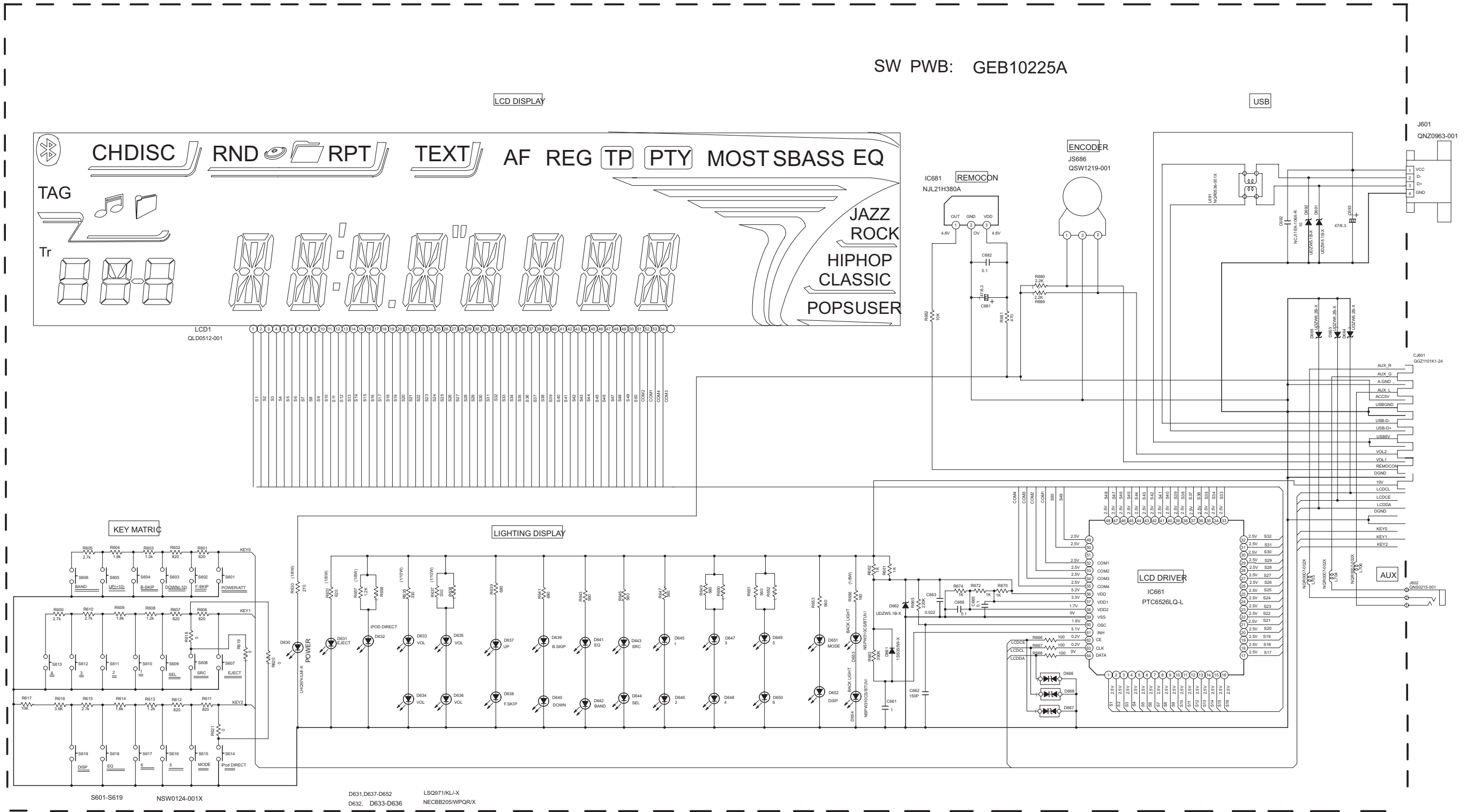


- CD_BV
- CDUSB.R
- AGND
- CD-USB.L
- 5V
- VDD_5V
- USB-RST
- USB_CON
- IC-CLK
- IC-DATA
- IC-REQ
- USB-DET
- SW1
- SW2
- PSW
- NPWDOWN
- MRW
- LM
- NRST
- IRQ
- STAT
- MLD
- MDATA
- MCLK
- DC-REQ
- RF-REQ
- 3.3V
- USB-D-
- USB-D+
- KEY12
- SWV

Parts are safety assurance parts. When replacing those parts make sure to use the specified one.

■ LCD & Key control section

SW PWB: GEB10225A



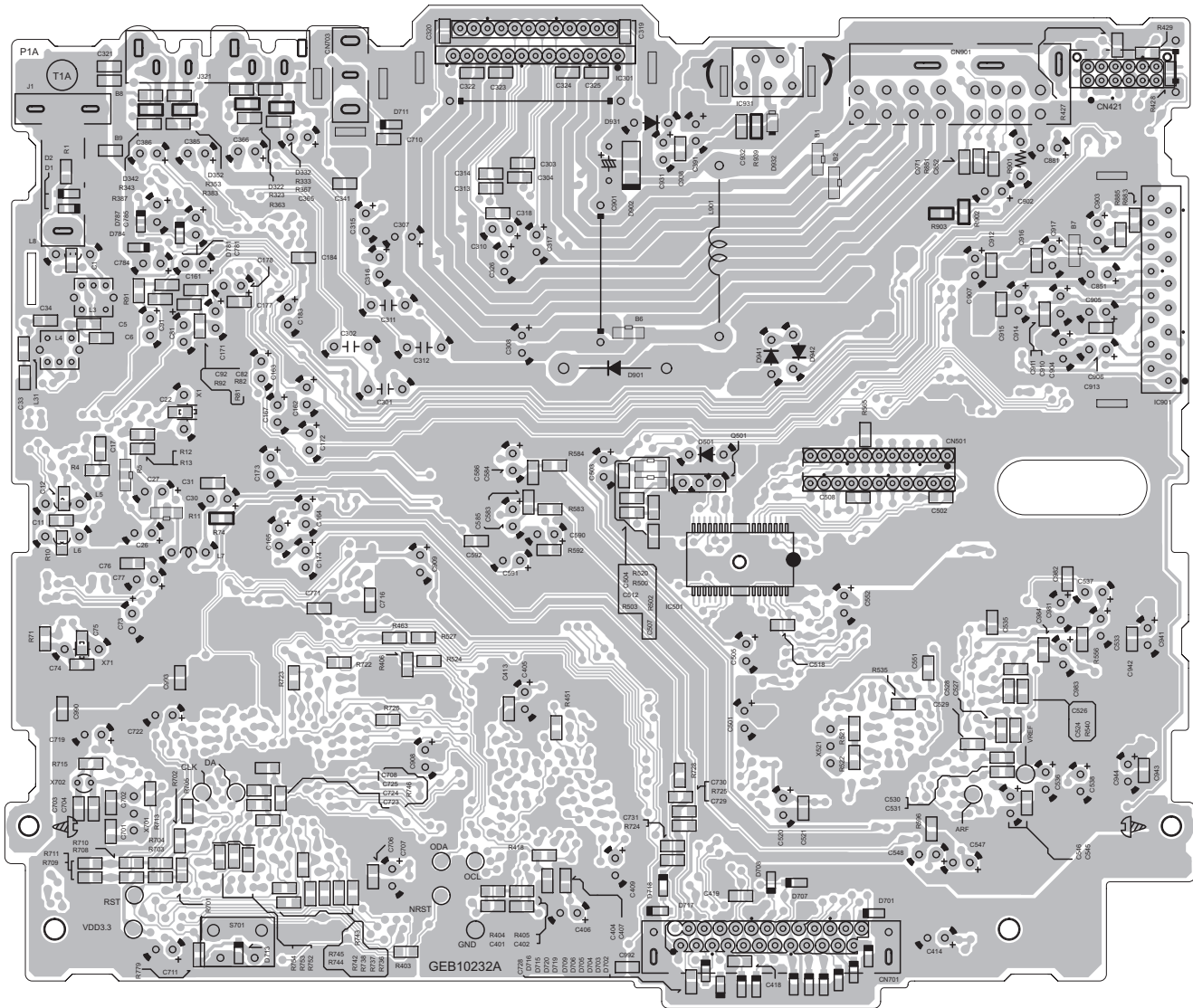
- NOTES
1. VOLTAGES ARE DC-MEASURED WITH A DIGITAL VOLT METER WITHOUT INPUT SIGNAL.
 2. UNLESS OTHERWISE SPECIFIED.
ALL RESISTORS ARE 1/16W +5% METAL GLAZE RESISTOR.
ALL CAPACITORS ARE 50V OR 25V CERAMIC CAPACITOR.
ALL RESISTANCE VALUES ARE IN OHM.
ALL CAPACITANCE VALUES ARE IN uF(P=PF)
ALL E-CAPACITORS ARE SHOWN IN THE FORM OF CAPACITANCE(uF)/RATED VOLTAGE(V)
T -- TANTALUM CAPACITOR.
 3. COMPONENTS IN () INDICATE NOT USE.

■ Main board

Lead free solder used in the board (material : Sn-Ag-Cu, melting point : 219 Centigrade)

reverse side

Lead free solder used in the board (material : Sn-Cu, melting point : 230 Centigrade)





Victor Company of Japan, Limited

Mobile Entertainment Business Group Mobile Entertainment Category 10-1, 1chome, Ohwatari-machi, Maebashi-city, Gumma-ken, 371-8543, Japan

(No.MA398SCH)

Printed in Japan
VPT