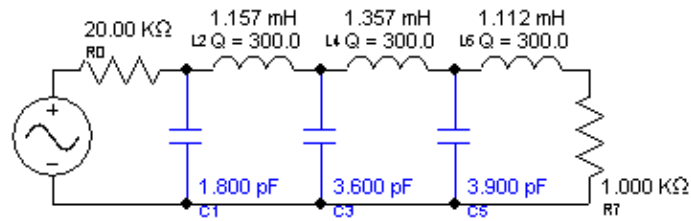


6th Order Low Pass Chebyshev I

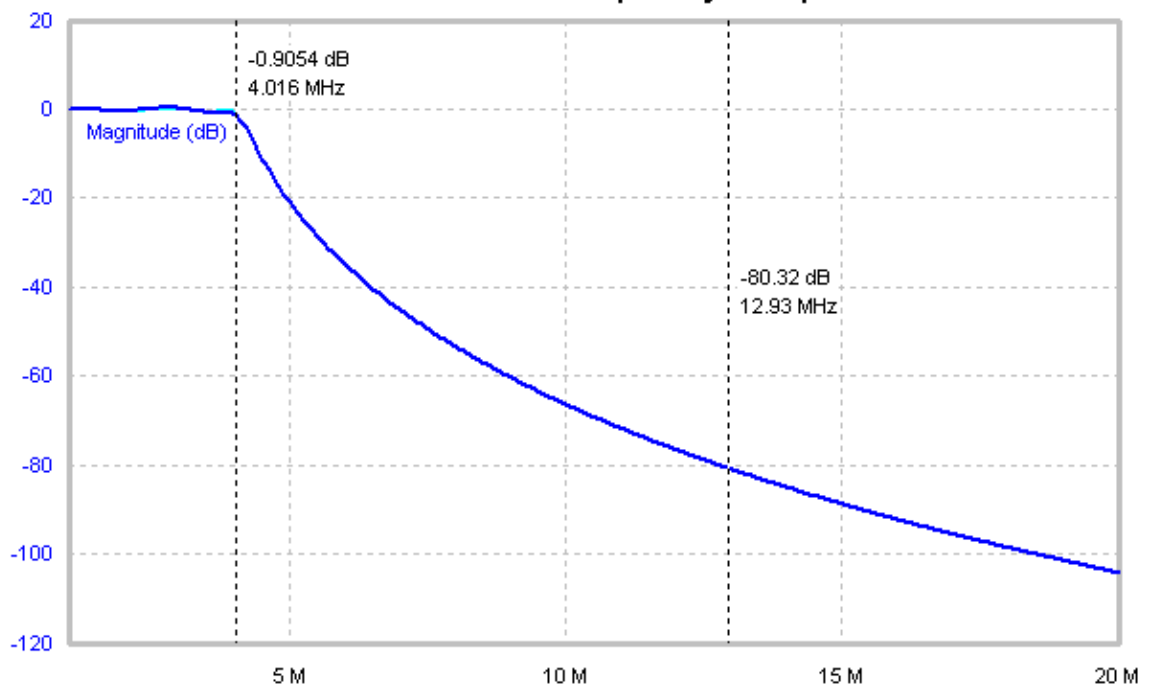
Pass Band Frequency = 4.000 MHz

Pass Band Ripple = 500.0 mdB



Thu Dec 10 10:59:10 2009

Passive Circuit Frequency Response



6th Order Low Pass Chebyshev I

Frequency (Hz)

Thu Dec 10 10:59 2009