

# WIWI INDUSTRIES LIMITED

## BILL OF MATERIAL

**Product Code:**

**K02-CCD7617-270418-00A**

**Model:**

**CCD-7617**

Item	Material Code	Brief Description	Qty	Remarks
	<b>K02-CCD7617-270418-00A</b>	<b>CD-7617D CAR RADIO CD PLAYER [HYUNDAI H-CDM8037]-RU-64134T</b>	<b>1</b>	
	<b>C02-CCD7600-64134T-OR2</b>	<b>CD-7617D MW/FM/OIRT,RDS,MP3/ESP,USB/SD,40Wx4</b>	<b>1</b>	
1	010-N035700-20000	AMORPHOUS TOROID 350uH 6A 205 D21x13.5 I-TYPE L=15	1	
2	022-C101000-10000	PLUG TYPE FUSE 10A 32V RED COLOUR	1	
3	029-B000100-00000	ANTENNA JACK DOUBLE SCREW ANGLE SOLDER PLATE	1	
4	031-0050U00-15000	FFC 15PIN 1.25PT L=(3+50+3) 2896 ROHS FOR CD-7500	1	
5	209-7500000-L0000	HOOK-SPRING CD-7500 D4.8XL2.8X0.35T	1	
6	209-7611000-V0000	CD-7611 RELEASE-SPRING (BLACK)	1	
7	212-2005000-03P00	FLAT-WASHER-AA ID2.0XOD5.0 W/OPEN CUTTING	1	
8	212-5209000-14S00	SPRING WASHER ID=5.2x9.0x1.4T	1	
9	214-3300000-A0000	CD-3300 RCA JACK FIBER 40x27x0.5mm	1	FOR RCA JACK FIBER
10	214-3306000-05F00	CD-3306D MAIN FIBER 176.5x152.2x0.5mm	1	
11	214-D220000-A0500	FIBRE (D=22.0MM 0.5T) FOR BUILD-IN ISO TRANSFORMER	1	
12	216-3991A00-C0000	CD-3991 HEAT-SINK W/SAND BLOWING [AL DIE CASTING]	1	
13	217-7600A00-00000	CD-7600 DETECTING SWITCH SPRING-PLATE	1	
14	218-3300E00-E1000	CD-3300 IC-BRACKET [EGI-1.0]	1	
15	218-3300K00-E0600	CD-3300 BOTTOM-COVER [EGI-0.6]	1	
16	218-7500F00-E1000	CD-7500 FRONT-BRACKET-{ LEFT } [EGI-1.0]	1	
17	218-7611R00-E1000	CD-7611 RELEASE-BRACKET-RIGHT [EGI T=1MM]	1	
18	219-7500000-L0000	CD-7500 REL-BRACKET-SHAFT-(LEFT) [BRASS]	1	
19	219-7611A00-D0000	CD-7611 STOP SHAFT [BRASS] (UPDATE Y060626)	1	
20	219-7611R00-D0000	CD-7611 REL BRK SHAFT- {RIGHT} [BRASS] (U/DY060626	1	
21	222-3300J00-E0600	CD-3300 TOP-COVER [EGI-0.6]	1	
22	222-7600A00-E1000	CD-7600 MAIN-CHASSIS W/4XRCA HOLE FOR LINE IN/OUT	1	
23	223-3300B00-E1000	CD-3300 SIDE-CHASSIS-(LEFT) [EGI-1.0]	1	
24	225-0110700-20000	PAD CORK 11X7X2MM W/AHESIVE	1	

Item	Material Code	Brief Description	Qty	Remarks
25	228-3888A00-00000	CD-3888 CD SLOT FELT [60g/m2 NON WOVEN CLOTH]	1	
26	233-N030W00-H0000	HEX NUT: M3	2	IC:2
27	234-HEX5000-12000	HEX BOLT D5x12mm DOUBLE HEAD [CARBON ST D.Zn]	1	
28	234-KM02000-04B00	SCREW: MS 2.0 X 4.0 KM	2	BLACK DAMPER2
29	234-MS03000-04000	SCREW: MS 3.0 X 4.0 (5.5x1x4)	3	BASE PANEL:3
30	234-PA03000-08000	SCREW TS 3.0 x 8.0 MM PA NICKLE WHITE	1	LINE SOCKET:1
31	234-PB02000-05000	SCREW PB 2.0 x 5.0 MM TS NICKLE	6	CONNECTOR PCB:2 RELEASE-BRACKET:4
32	234-PM02600-13000	MACHINE SCREW PM 2.6 x 13.0 MM NICKLE ROUND HEAD	2	IC:2
33	234-PM03000-06000	MACHINE SCREW PM 3.0 x 6.0 MM NICKLE ROUND HEAD	2	IC:2
34	234-PT02600-10000	TAP TYPE"C" SCREW TTP 2.6 x10 MM NICKLE ROUND HEAD	2	HEAT-SINK+SIDE CHASSIS:2
35	234-PT02600-12000	TAP TYPE SCREW TTP M2.6 x 12.0MM NICKLE ROUND HEAD	1	HEAT-SINK+SIDE CHASSIS:1
36	234-PT03000-05000	TAP TYPE SCREW TTP M3.0 x 5.0 MM NICKLE ROUND HEAD	8	MAIN-PCB+SIDECHAS:3 DECK-BKT+SIDECHAS:3 ANTENNA:2
37	234-PT03000-06000	TAP TYPE SCREW-[C] TTP M3.0 x 6.0 MM NICKLE ROUND	1	DECK BKT+TRANSFORMERBOX:1
38	243-3888000-A0000	CD-3888 CD-GUIDE PLATE [PVC-0.5T BLACK]	1	
39	243-3896000-Q0000	CD-3896 VFD-SIDE-COVER-L BLACK [PAPER 0.1T]	1	
40	402-7611A00-3BK00	CD-7611 USB/MMC BASE-PANEL [PC] BLACK	1	
41	414-7600100-2CR00	CD-7600 CD-GUILD-REFLECTOR [PMMA]	1	
42	430-7600A00-3NL00	CD-7600 EJ-KNOB [PC]	1	
43	440-7500A00-3BK00	CD-7500 HOOK [PC BLACK]	1	
44	456-7611A00-9BK00	CD-7611 { DETECT } -KNOB [POM BLACK]	1	
45	462-2001A00-3BK00	MICRO DAMPER ASS'Y DPP01 14TQ (19-24) RED COLOR	1	
46	462-7500A00-9BK00	CD-7500 RELEASE-GEAR [POM BLACK]	1	
47	462-7500B00-9BK00	CD-7500 RELEASE-GEAR-B [POM BLACK]	1	
48	463-3300C00-3BK00	CD-3300 CHOKE COIL HOLDER [PC] BLACK	1	
49	477-7611A00-5BK00	CD-7611 USB-COVER [PVC] SOFT BLACK	1	
50	802-0703E00-WE000	SILICONE GLUE 45gsm	0.03	
<b>D02-CCD7600-3303DJ-702</b>		<b>CD-7600D SERIES DECK ASSY-CD/MP3/ESP USB/MMC (8310W)</b>	<b>1</b>	
51	203-8008S00-C2E00	CD DECK CDM-211/CDX-100 W/SANYO MOTOR	1	
52	214-3300000-B0000	MOTOR-COVER-FIBRE 10x27mm	1	
53	214-DECK000-A0000	DECK FIBER 105x95x0.5mm	1	FOR CD KMC DECK

Item	Material Code	Brief Description	Qty	Remarks
54	216-3300B00-C0000	HEAT-SINK-S CD-3300 [IRON PLATE]	1	
55	218-3300X00-E1000	DECK BRAKET-"R" CD-3300 [EGI-1.0]	1	
56	218-3300Y00-E1000	DECK BRAKET LEFT	1	
57	218-7600C00-E1000	DECK-BRACKET-F	1	
58	234-BMT2000-04000	SCREW TTP 2.0 x 4.0 BM TAP TYPE	4	
59	234-PT02600-04000	TAP TYPE SCREW M2.6 x 4.0 MM NICKLE ROUND HEAD	5	DECK BRT:5
<b>H05-3303D00-J70000-002</b>		<b>CD-3303D CD/MP3 ESP USB/MMC(8310W) CD BOARD HAND INSERT ASSY</b>	<b>1</b>	
60	004-0400100-00000	DIODE 1N4001 50V 1A	1	D2
61	004-0414800-00000	DIODE 1N4148	1	D4
62	004-SR23G00-00000	INFRARED EMITTING DIODE SR-23G/OSE-23G/OSE-23F	2	IR1.3
63	006-1200000-40000	CRYSTAL 12.000MHZ [HC-49US] 30PPM LC=20PF	1	XM1
64	006-1693400-40000	CRYSTAL 16.934MHZ [HC-49US] 30PPM LC=20PF	1	X1
65	010-F022600-00000	INDUCTOR [EC24] 22uH 10% AXIAL LEAD DCR<=1.4R	1	L101
66	012-1107B00-30000	MINI E-CAP [5x7] 100uF 10V 20% 85C	9	E101.103.102.10.21. 15.11.20.16
67	012-2227B00-30000	MINI E-CAP [6x7] 220uF 10V 20% 85C	1	E9
68	012-4106C00-30000	MINI E-CAP [4X5] 10uF 16V 20% 85C	5	E7.17.18.13.14
69	012-4474F00-30000	MINI E-CAP [4X5] 0.47uF 50V 20% 85C	1	E6
70	012-4476B00-30000	MINI E-CAP [4x5] 47uF 10V @20%	1	E12.
71	012-B476B00-30000	MINI E-CAP [4x7] 47uF 10V 20% 85C	5	E8.1.3.2.4
72	025-TA02000-33000	SWITCH 2P 3.3mm SW-111 HC-49S	1	(small type)
73	031-0120U00-16000	FFC 16PIN PT1.0 L=120(4+112+4 B1=6MM)	1	C29
74	031-0120U00-17000	FFC 17PIN PT1.0 L=120(4+112+4,B1=6MM)	1	C30
75	032-E100000-03100	RAINBOW WIRE #26 3PIN 100MM(3+100+3)	1	3+100+3
76	036-B020000-04100	4P SOCKET 53015-0410 (ROHM)	1	
77	037-A518000-4A000	H'ING 4P P=2.0mm #26 DECK CONAR 4x180mm	1	CON5 (RAINBOW-WIRE)
78	037-A520000-7A000	H'ING 7P P=2.0mm #26 DECK CONAR 7x200mm	1	CON1 (RAINBOW-WIRE)
<b>S05-3303D00-J70000-002</b>		<b>CD-3303D MP3/ESP,USB/MMC(8310W) CD BOARD SMT ASSEMBLY</b>	<b>1</b>	
79	001-3303D00-J7000	PCB CD-3303-D USB SERVO [VER-6] FOR 9279/8310	1	
80	002-0016M00-P0000	IC 16M DRAM [SOJ26(24)]	1	IC5
81	002-0111700-U1800	IC S1117-18Q 1.8V 1A LDO [SOT223] AUK	1	IC4

Item	Material Code	Brief Description	Qty	Remarks
82	002-0111700-U3300	IC S1117-33Q 3.3V 1A LDO [SOT223] AUK	1	IC102
83	002-0400100-A0100	IC IP4001D/S3001 5CH MOTOR DRV FOR CDP	1	IC1
84	002-0922600-S0100	IC S1L9226X CDP RF+SSP [LQFP48] S.SUNG	1	IC3
85	002-S5L8310-R100D	IC S5L8310W DSP+MP3 DECODER FOR CDP [LQFP100]	1	IC2
86	002-TMC51FW-H048D	IC TMC51FW [LQFP48] MMC INTERFACE FOR S5L8310W	1	IC100
87	003-0150400-B0300	TR-PNP-SMD KTA1504S-GR/2SA1980S/F [SOT-23]	8	Q7.3.1.6.4.5.102.101
88	003-0387500-G0000	TR-NPN-SMD KTC3875S/2SC-5343S/F [SOT-23]	1	Q104
89	004-0414800-S0000	CHIP-DIODE [0805] CD4148	6	D1.3.5.102.101.6
90	011-B100A00-20000	CHIP RES [0603] 10 OHM $\oplus$ 5%	1	R1
91	011-B101A00-20000	CHIP RES [0603] 100 OHM $\oplus$ 5%	5	R132.31.35.32.36
92	011-B102A00-20000	CHIP RES [0603] 1K OHM 5%	9	R129.130.58.59.34.83.84. 56.123
93	011-B103A00-20000	CHIP RES [0603] 10K OHM $\oplus$ 5%	15	R76.54.97.89.74.16.55.128.127.9 5.96.17.18.73.30
94	011-B104A00-20000	CHIP RES [0603] 100K OHM $\oplus$ 5%	8	R81.82.28.19.131.151.28.155
95	011-B105A00-20000	CHIP RES [0603] 1M OHM $\oplus$ 5%	3	R12.136.78
96	011-B123A00-20000	CHIP RES [0603] 12K OHM $\oplus$ 5%	2	R11.13
97	011-B124A00-20000	CHIP RES [0603] 120K OHM $\oplus$ 5%	3	R22.152.33
98	011-B151A00-20000	CHIP RES [0603] 150 OHM $\oplus$ 5%	1	R51
99	011-B153A00-20000	CHIP RES [0603] 15K OHM $\oplus$ 5%	3	R21.146.145
100	011-B154A00-20000	CHIP RES [0603] 150K OHM $\oplus$ 5%	3	R20.2.7
101	011-B203A00-20000	CHIP RES [0603] 20K OHM $\oplus$ 5%	1	R15
102	011-B220A00-20000	CHIP RES [0603] 22 OHM $\oplus$ 5%	20	R114.101.102.103.104.105.106.1 07.108.109.110.111,112.113.138. 139.142.143. 140.141
103	011-B222A00-20000	CHIP RES [0603] 2.2K OHM $\oplus$ 5%	5	R125.126.79.67.65
104	011-B223A00-20000	CHIP RES [0603] 22K OHM $\oplus$ 5%	1	R25
105	011-B224A00-20000	CHIP RES [0603] 220K OHM 5%	4	R24.85.29.10
106	011-B333A00-20000	CHIP RES [0603] 33K OHM $\oplus$ 5%	1	R23
107	011-B390A00-20000	CHIP RES [0603] 39 OHM $\oplus$ 5%	2	R133.134
108	011-B472A00-20000	CHIP RES [0603] 4.7K OHM $\oplus$ 5%	1	R9
109	011-B473A00-20000	CHIP RES [0603] 47K OHM $\oplus$ 5%	8	R90.94.93.77.120.119.121.28
110	011-B683A00-20000	CHIP RES [0603] 68K OHM $\oplus$ 5%	5	R6.5.4.3.27
111	011-B820A00-20000	CHIP RES [0603] 82 OHM $\oplus$ 5%	1	R8

Item	Material Code	Brief Description	Qty	Remarks
112	011-B821A00-20000	CHIP RES [0603] 820 OHM $\pm$ 5%	1	R37
113	011-B822A00-20000	CHIP RES [0603] 8.2K OHM $\pm$ 5%	1	R14
114	011-B823A00-20000	CHIP RES [0603] 82K OHM 5%	1	R26
115	013-D475J00-50A00	CHIP TAN CAP 20% 4.7uF 6.3V [A-Size]	1	E5
116	014-B080C00-200NP	CHIP CAP [0603] 8PF 50V +/-0.5P NPO	2	C7.6
117	014-B102C00-50000	CHIP CAP [0603] 102P (0.001uF) 50V 10%	4	C10.1.2.3
118	014-B103C00-50000	CHIP CAP [0603] 103P (0.01uF) 50V $\pm$ 10%	5	C18.102.19.11.4
119	014-B104B00-80000	CHIP CAP [0603] 104P (0.1uF) 25V +80-20%	29	C108.109.107.101.103.62.68.67.1 10.21.61.27.26.5.15.12.13.8.57.3 1.60.59.69.28.72.56.70.111.66
120	014-B122C00-50000	CHIP CAP [0603] 122P (0.0012uF) 50V 10%	2	C53.55
121	014-B152C00-50000	CHIP CAP [0603] 152P (.0015) 50V 10%	2	C63.64
122	014-B220C00-400NP	CHIP CAP [0603] 22PF 50V +/-5% NPO	2	C105.104
123	014-B222C00-50000	CHIP CAP [0603] 222P (0.0022uF) 50V 10%	2	C14.23
124	014-B270C00-400NP	CHIP CAP [0603] 27PF 50V +/-5% NPO	2	C52.51
125	014-B333C00-80000	CHIP CAP [0603] 333P (0.033) 50V +80-20%	2	C25.16
126	014-B391C00-50000	CHIP CAP [0603] 391P (390PF) 50V 10%	2	C24.22
127	014-B472C00-50000	CHIP CAP [0603] 472P (0.0047) 50V 10%	1	C9
128	014-B474B00-80000	CHIP CAP [0603] 474P (0.47uF) 25V +80-20%	1	C17
129	014-B683C00-50000	CHIP CAP [0603] 683P (0.068) 50V 10%	1	C20
130	014-B821C00-50000	CHIP CAP [0603] 821P (820PF) 50V 10%	1	C106
131	036-G010000-17100	17-PIN SOCKET P=1.0MM SMT	1	
132	057-102T000-S0200	BEAD CHIP 0603 FCM1608K-102T02	8	BD101.5.6.3.7.1.2.4
	<b>H01-7601S00-W00000-EU7</b>	<b>MW/FM/OIRT,RDS,MP3,USB/SD,40Wx4,2LINEIN/2 OUT,BI-ISO MAIN BOARD HAND INSERT ASSY</b>	<b>1</b>	
133	002-0114000-A0900	IC LA1140 FM IF [ZIP16] SANYO	1	IC4
134	002-0337000-A0900	IC LA3370 MPX FOR CAR AUDIO [ZIP16]	1	IC2
135	002-0455800-G0000	IC TJM4558-C DUAL OP-AMP [SO8]	2	IC3.5
136	002-0703500-T0000	IC KIA7035 RESET	1	Q30
137	002-0738800-J0600	IC TDA7388 4X41W(MAX) POWER AMP FOR CAR AUD [ST]	1	U1
138	002-1923F00-G0700	IC BU1923F RDS DECODER	1	IC7
139	002-2313L00-B0000	IC PT2313L AUDIO PROCESSOR [SOP28]	1	IC601
140	002-78L0500-F0000	IC KIA78L05 5V 0.1A [TO92]	1	Q32

Item	Material Code	Brief Description	Qty	Remarks
141	002-78R0500-F0000	IC KIA78R05API 5V1A LOW DROP REG [TO220IS4]	1	Q40
142	002-791NRF0-H100D	IC NEO-791NRF CAR MP3 USB/MMC MCU [QFP100] S5L8310	1	IC1
143	003-0127300-A0300	TR-PNP KTA1273-Y [TO92M] HI-CURRENT -30V, 2A	2	Q11.17.
144	003-0130300-D0300	TR-NPN KTD-1303 [TO-92M] AUDIO MUTING (25V 0.3A)	4	Q1.8.9.10
145	003-0136800-C0000	TR-PNP KTB1368-O -80V -4A 25W [TO-220IS]	1	Q23
146	003-1267Y00-A0000	TR-PNP KTA1267-Y [TO-92M] GENERAL USE (-50V 0.15A)	3	Q34.36.3
147	003-1271Y00-A0300	TR-PNP KTA1271-Y [TO-92] HIGH CURRENT (-35V 0.8A)	1	Q6
148	003-3203Y00-D0300	TR-NPN KTC3203-Y 30V 0.8A HEF=160-320 [TO92]	3	Q26.28.(AM19)
149	003-CPN2000-J0000	TR ICP-N20 50V 0.8A IC PROTEC 2PIN DIP TYPE	1	PTC1
150	004-0400100-00000	DIODE 1N4001 50V 1A	1	D6
151	004-0414800-00000	DIODE 1N4148	16	D39.38.31.17.35.21.24.28.9.15.16 .7.22.19(OIRT.D12.17)
152	005-0003600-A0000	ZENER DIODE 3.6V 1/2W +/-5%	2	ZD7.9
153	005-0005100-A0000	ZENER DIODE 5.1V 1/2W +/-5%	4	ZD1.10.2.8.
154	005-0005600-A0000	ZENER DIODE 5.6V 1/2W +/-5%	1	ZD4.
155	005-0007500-A0000	ZENER DIODE 7.5V 1/2W +/-5%	1	ZD6
156	005-0010000-A0000	ZENER DIODE 1/2W 10V	2	ZD3.5.
157	006-0433200-00000	CRYSTAL 4.332MHz [HC-49U] 30PPM	1	XT2
158	006-0900000-40000	CRYSTAL 9.000MHZ [HC-49US] 30PPM LC=20PF	1	XT1
159	007-C7001A0-7GY00	IFT 7x7mm H=12.5MM [7001] 10.7MHz DET [GREY] Q=34	1	T1
160	009-0202700-A0200	FM/OIRT DBM TUNER WEF-253WV [TOP-ALPHA]	1	TUNER1
161	009-1019A00-A0100	TUNER AM CET-1019A/S FOR CAR AUDIO (TAEBONG)	1	
162	010-A022200-00000	INDUCTOR COIL [D6X8] 22mH 10% DCR=55R, 30mA MAX	1	L1
163	011-A010F00-20000	RES 1/2W @5% 1 OHM	2	R168.98.
164	011-A100A00-20000	RES 1/16W @5% 10 OHM	1	R174
165	011-A102A00-20000	RES 1/16W @5% 1K OHM	1	R88
166	011-A104A00-20000	RES 1/16W @5% 100K OHM	1	R83
167	011-A105A00-20000	RES 1/16W @5% 1M OHM	1	R199.(DTH-SW)
168	011-A181A00-20000	RES 1/16W @5% 180 OHM	1	R53
169	011-A223A00-20000	RES 1/16W @5% 22K OHM	1	R63
170	011-A272A00-20000	RES 1/16W @5% 2.7K OHM	1	R181

Item	Material Code	Brief Description	Qty	Remarks
171	011-A472A00-20000	RES 1/16W ±5% 4.7K OHM	2	R198.?(DTH-SW)
172	011-A562A00-20000	RES 1/16W ±5% 5.6K OHM	4	R111.110.109.108
173	012-1476C00-30000	MINI E-CAP [5x7] 47uF 16V 20% 85C	7	C81.118.121.102.35.94.(AM C75)
174	012-2107C00-30000	MINI E-CAP [6x7] 100uF 16V 20% 85C	9	C125.86.52.55.68.79.124.120.82.
175	012-4224F00-30000	MINI E-CAP [4x5] 0.22uF 50V ±20%	1	C92.
176	012-B105F00-30000	MINI E-CAP [4x7] 1uF 50V 20% 85C	14	C71.73.49.53.50.47.84.54.56.106.91.51.90.(AM C76)
177	012-B106D00-30000	MINI E-CAP [4x7] 10uF 25V 20% 85C	6	C74.42.122.117.63.(AM C108)
178	012-B335F00-30000	MINI E-CAP [4x7] 3.3uF 50V 20% 85C	2	C67.72
179	012-B474F00-30000	MINI E-CAP [4x7] 0.47uF 50V 20% 85C	4	C95.97.96.98
180	012-B475F00-30000	MINI E-CAP [4x7] 4.7uF 50V 20% 85C	10	C64.48.105.126.34.33.93.119.28.29.
181	012-C107C00-30000	E-CAP [5x11] 100uF 16V 20% 85C	1	C61
182	012-E477B00-30000	E-CAP [6x12] 470uF 10V 20% 85C	2	C87.130
183	012-U228C00-30000	E-CAP [10x30] 2200uF 16V 20% 85C	1	GND1
184	013-A103B00-40000	MYLAR CAP 0.01uF 100V 10%	2	C1.15
185	013-A223B00-40000	MYLAR CAP 0.022uF 100V 10%	2	C69.70
186	013-B102A00-40000	POLY CAP 1000PF 50V 10%	1	C16
187	015-H010300-E0000	SEMI-FIXED 6MM 3PIN H-TYPE SC-065 10KB (CERAMIC)	1	VR3
188	015-H020300-E0000	SEMI-FIXED 6MM 3PIN H-TYPE SC-065 20KB (CERAMIC)	2	VR2.4
189	015-H050300-E0000	SEMI-FIXED 6MM 3PIN H-TYPE SC-065 50KB (CERAMIC)	1	VR1
190	016-C030000-60000	TRIMMER CAP DIA=6MM 30PF +50-0% N750+/-500	1	C8
191	017-B010700-40000	CERAMIC FILTER 10.7MJA	1	C2
192	023-A005000-RD000	LED RED DIA=5mm 2V/20mA 25-40mcd	1	D20
193	025-LF1120B-00000	MICRO DETECTOR SWITCH [1P1T] 1120B FOR CD7600	1	
194	025-TA04000-38500	4P TACT SW H=3.85 169G/F	1	KEY
195	033-S100000-BN000	S.SHIELD WIRE #28 100MM(3+94+3) BROWN	1	
196	033-S150000-BN000	S.SHIELD WIRE #28 150MM (3+144+3)BROWN	1	
197	035-B120000-BK100	JUMPER WIRE AWG#20 120mm BLACK (3+120+3)	1	
198	035-F110000-BK100	JUMPER WIRE AWG#28 110mm BLACK (3+110+3)	1	
199	036-A020000-04000	4PIN WAFER P=2.0mm	1	CON5
200	036-A020000-07000	7PIN WAFER P=2.0mm	1	CON1

Item	Material Code	Brief Description	Qty	Remarks
201	036-D010000-16300	16P FFC CONN PT=1.0 L-DIP TYPE-A UPPER CONTACT	1	CON4
202	036-D010000-17300	17P FFC CONN PT=1.0 L-DIP TYPE-B UPPER CONTACT	1	CON2
203	046-0042600-00000	RCAX4 (2RED+2WHITE) JACK PT=15MM PCB TYPT	1	
204	221-S004000-04000	BARE WIRE D=0.4x40mm	130	
<b>S01-7601S00-W00000-EU7</b>		<b>MW/FMOIRT,RDS,MP3,USB/SD,40Wx4,2Line-IN/2Oou,MAIN BOARD SMT ASSY</b>	<b>1</b>	
205	001-7601S00-W0000	PCB CD-7600-D USB H/P MAIN [REV-4]	1	
206	003-0387500-G0000	SMT TR-NPN KTC3875S/2SC-5343S/F [SOT-23] 50V 0.15A	15	Q18.2.15.14.4.33.12.37.13.25.24.27.20.16.7
207	004-0414800-S0000	CHIP-DIODE [0805] CD4148	8	D1.4.41.11.10.5.13.14
208	004-B160M00-S0000	SHOTTKY DIODE RB160M-30 30V1A [SOD-106]	2	R210.3.
209	010-1R0KS08-00000	CHIP INDUCTOR [0805] 1uH 10% 50mA DCR<=0.4R	1	C136
210	011-S000A00-20000	CHIP RES [0805] 0 OHM 5%	1	C2
211	011-S100A00-20000	CHIP RES [0805] 10 OHM 5%	1	R116.
212	011-S101A00-20000	CHIP RES [0805] 100 OHM 5%	4	R118.119.120.179
213	011-S102A00-20000	CHIP RES [0805] 1K OHM 5%	11	R24.68.71.20.37.38.177.144.178.(AM R104.R159)
214	011-S103A00-20000	CHIP RES [0805] 10K OHM 5%	21	R166.142.148.141.77.117.101.86.61.56.64.60.76.92.78.150.41.25.167.149.(AM R29)
215	011-S104A00-20000	CHIP RES [0805] 100K OHM 5%	5	R97.99.173.176.17.
216	011-S105A00-20000	CHIP RES [0805] 1M OHM 5%	4	R180.96.103.107
217	011-S122A00-20000	CHIP RES [0805] 1.2K OHM 5%	3	R135.134.18
218	011-S123A00-20000	CHIP RES [0805] 12K OHM 5%	1	R153.
219	011-S151A00-20000	CHIP RES [0805] 150 OHM ⊕5%	1	R67
220	011-S152A00-20000	CHIP RES [0805] 1.5K OHM ⊕5%	4	R85.87.82.66
221	011-S153A00-20000	CHIP RES [0805] 15K OHM ⊕5%	3	R8.9.12.
222	011-S183A00-20000	CHIP RES [0805] 18K OHM ⊕5%	2	R22.23.
223	011-S220A00-20000	CHIP RES [0805] 22 OHM 5%	3	R54.31.28
224	011-S221A00-20000	CHIP RES [0805] 220 OHM ⊕5%	1	R90
225	011-S222A00-20000	CHIP RES [0805] 2.2K OHM 5%	4	R152.151.59.158
226	011-S223A00-20000	CHIP RES [0805] 22K OHM ⊕5%	11	R80.146.81.7.11.15.74.125.45.65.(AM R32)
227	011-S224A00-20000	CHIP RES [0805] 220K OHM ⊕5%	3	R94.102.14
228	011-S271A00-20000	CHIP RES [0805] 270 OHM 5%	1	R105
229	011-S272A00-20000	CHIP RES [0805] 2.7K OHM ⊕5%	1	R100.



Item	Material Code	Brief Description	Qty	Remarks
230	011-S303A00-20000	CHIP RES [0805] 30K OHM $\oplus$ 5%	1	R26.
231	011-S330A00-20000	CHIP RES [0805] 33 OHM $\oplus$ 5%	4	R13.147.21.172
232	011-S331A00-20000	CHIP RES [0805] 330 OHM $\oplus$ 5%	1	R5
233	011-S332A00-20000	CHIP RES [0805] 3.3K OHM $\oplus$ 5%	5	R140.115.161.162.163
234	011-S333A00-20000	CHIP RES [0805] 33K OHM $\oplus$ 5%	2	16.40
235	011-S334A00-20000	CHIP RES [0805] 330K OHM $\oplus$ 5%	4	R58.57.73.70
236	011-S471A00-20000	CHIP RES [0805] 470 OHM 5%	3	R91.72.30
237	011-S472A00-20000	CHIP RES [0805] 4.7K OHM $\oplus$ 5%	3	R75.175.(AM R33)
238	011-S473A00-20000	CHIP RES [0805] 47K OHM $\oplus$ 5%	17	R169.157.69.89.49.50.42.43.48.47.154.155.10.106.95.34.6
239	011-S512A00-20000	CHIP RES [0805] 5.1K OHM $\oplus$ 5%	1	R84.
240	011-S562A00-20000	CHIP RES [0805] 5.6K OHM $\oplus$ 5%	8	R79.127.126.128.129.36.35.19
241	011-S563A00-20000	CHIP RES [0805] 56K OHM $\oplus$ 5%	2	R164.165.
242	011-S681A00-20000	CHIP RES [0805] 680 OHM +/-5%	2	R156.114
243	011-S820A00-20000	CHIP RES [0805] 82 OHM $\oplus$ 5%	1	R123
244	011-S821A00-20000	CHIP RES [0805] 820 OHM $\oplus$ 5%	2	R27.62
245	011-S822A00-20000	CHIP RES [0805] 8.2K OHM $\oplus$ 5%	4	R51.44.46.55
246	014-S101C00-400NP	CHIP CAP [0805] 100PF 50V +/-5% NPO	6	C11.100.31.32.103.14.
247	014-S102C00-50000	CHIP CAP [0805] 102P (0.001uF) 50V $\oplus$ 10%	7	C123.58.80.77.59.142.143.
248	014-S103C00-50000	CHIP CAP [0805] 103P (0.01uF) 50V +/-10%	8	C109.138.40.57.60(AM C18.23.99)
249	014-S104B00-80000	CHIP CAP [0805] 104P (0.1uF) 25V +80-20%	18	C65.41.46.45.44.43.127.38.37.89.85.66.26.24.111.107.3.110
250	014-S150C00-400NP	CHIP CAP [0805] 15PF 50V +/-5% NPO	1	C10
251	014-S222C00-50000	CHIP CAP [0805] 222P (0.0022uF) 50V 10%	3	C21.22.13
252	014-S223C00-80000	CHIP CAP [0805] 223P (0.022uF) 50V +80-20%	5	C6.9.5.12.88
253	014-S271C00-50000	CHIP CAP [0805] 271P (270PF) 50V 10%	1	C25
254	014-S272C00-50000	CHIP CAP [0805] 272P (0.0027) 50V 10%	2	C30.36
255	014-S300C00-400NP	CHIP CAP [0805] 30PF 50V +/-5% NPO	2	C27.20
256	014-S330C00-400NP	CHIP CAP [0805] 33PF 50V +/-5% NPO	1	C101
257	014-S473C00-80000	CHIP CAP [0805] 473P (0.047uF) 50V +80-20%	1	C7
258	014-S561C00-50000	CHIP CAP [0805] 561P (560PF) 50V 10%	1	C19
<b>H04-3300D00-A90000-000</b>		<b>CD-3300 ISO BOARD (W/POWER ANT) HAND INSERT ASSEMBLY</b>	<b>1</b>	

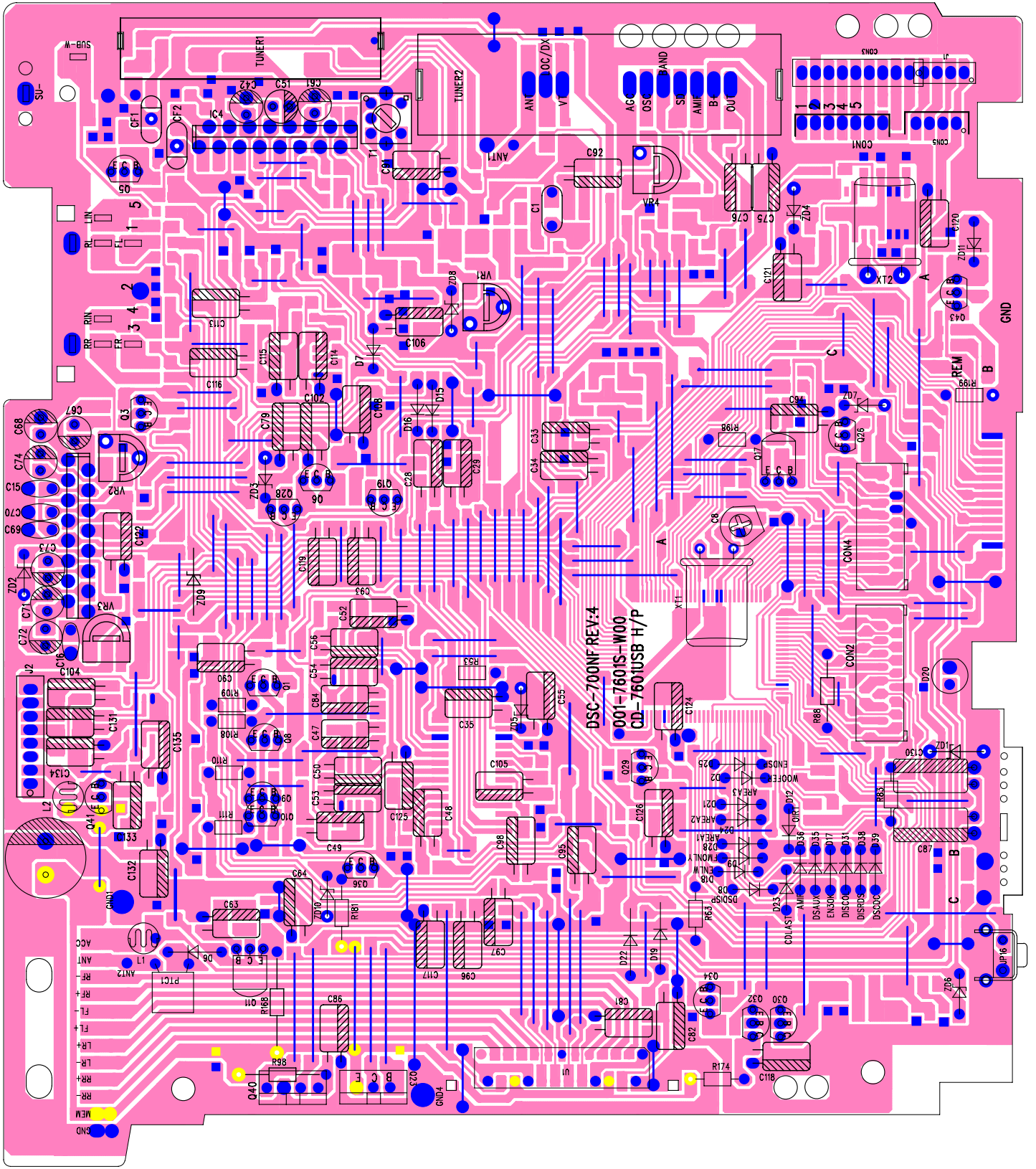
Item	Material Code	Brief Description	Qty	Remarks
259	001-3300D00-A9000	P.C.B ISO BOARD	1	
260	004-1N5404A-00000	DIODE-RECTIFIER 1N5404, 400V 3A [DO-201AD] PACKING	1	
261	036-K025000-12000	12Pin P=2.5mm PCB Connector Right Angle	1	
262	263-3300000-A0000	TERMINAL-FUSE	2	
263	263-3300000-B0000	CD-3300 ISO SOCKET - TERMINAL-CONTACT [COPPER]	11	
264	263-3300001-C0000	CD-3300 ISO SOCKET-TERMINAL -{ 1 } [COPPER] 0.6MM	1	
265	485-3300A00-8BK00	CD-3300 FIXED-ISO-CONNECTOR-NYLON 66 (BLACK)	1	
<b>H07-7600D00-B00000-000</b>		<b>CD-7600 USB/MMC BOARD HAND INSERT ASSEMBLY</b>	<b>1</b>	
266	001-7600D00-B0000	PCB CD-7600-D USB/SD CON [REV-2]	1	
267	029-7S02100-00F00	SMD SD/MMC CARD SOCKET [P7S021P18]	1	
268	029-F083600-00C00	USB-A SOCKET L-DIP & PCB TYPE NO:MJE-P-0836	1	
269	036-K020000-13000	13Pin P=2.0mm PCB Connector Right Angle	1	
<b>H0B-7600S00-C00000-000</b>		<b>CD-7600D CONNECTOR BOARD HAND INSERT ASSEMBLY</b>	<b>1</b>	
270	001-7600S00-C0000	PCB CD-7600-D CONNECTOR [REV-1]	1	
271	023-A003000-RD300	LED D=1.8 RED(660nm)H.BRIGHT 220mcd 1.9V20MA 52DEG	1	D1
272	025-TA02000-26000	TACT-SW 2P TP-1126C 3X6MM H=2.6MM DIP TYPE	1	
273	036-J020000-18000	DETACHABLE CON 18P P=2.0mm SOCKET	1	
<b>F02-CCD7617-000000-000</b>		<b>CD-7617D FRONT W/TB0198 A1 (WHE/BLUE) REMOTE PANEL ASSEMBLY</b>	<b>1</b>	
274	209-2001000-30000	CD-2001 RELEASE SPRING	1	FOR RELEASE KNOB
275	209-3896000-N0000	CD-3896 FRONT LOCK SPRING (BSBM T=0.3)	1	BSBMT=03
276	209-7500000-T0000	SHAFT-BASE-SPRING CD-7500 D3.35XL8.0X0.35T	2	
277	227-7608G00-A0000	CD-7608 SENSOR SPONGE EVA OD7.0xH2.0 W/ADHESIVE	1	
278	234-PA01700-05000	SCREW PA 1.7 x 5.0 NICKLE	3	REFLECTOR:3
279	234-PA02000-08B00	SCREW PA 2.0 x 8.0 MM BLACK	4	
280	246-7617000-WE010	CD-7617 REFLECTOR COVER WHITE PLATE T=0.1MM	1	
281	261-3897000-A0000	CD-3897 RUBBER-BAND [RUBBER]	1	
282	402-7617B00-1BK00	CD-7617 NOSE-PIECE ABS (BLACK)	1	
283	402-7617C00-1BK00	CD-7617 NOSE-PIECE-BACK [ABS BLACK]	1	
284	413-7617A00-2CR00	CD-7617 WINDOW [PMMA] CLEAR	1	
285	414-7617A00-2BE00	CD-7617 {PWR-MUTE KNOB} -REFLECTOR [PMMA BLUE]	1	BACK SILKSCREEN WHITE

Item	Material Code	Brief Description	Qty	Remarks
286	427-7617A00-CCR00	CD-7617 {PWR-BND-APS-SCN-MD-DSP}-KNOB [RUBBER CLR]	1	
287	428-7801C00-1BK00	CD-7801 VOLUME-KNOB [ABS] BLACK W/CHROME PLATE	1	
288	436-7617A00-CCR00	CD-7617 {TRK-MUTE} -KNOB [RUBBER CLEAR]	1	
289	439-7617A00-1BK00	CD-7617 {RELEASE} -KNOB [ABS] BLACK	1	
290	446-7617A00-CCR00	CD-7617 {PTY-AF-TA} -KNOB [RUBBER CLEAR]	1	
291	462-7600C00-9BK00	CD-7600 RELEASE-SHAFT-BASE-LEFT [POM BLACK]	1	
292	462-7600D00-9BK00	CD-7600 RELEASE-SHAFT-BASE-RIGHT [POM BLACK]	1	
<b>H03-7617D00-K10000-000</b>		<b>CD-7617D FRONT PCB W/0198-A1(WHE/BLU) REMOTE HAND INSERT ASSEMBLY</b>	<b>1</b>	
293	008-TB0198B-TN054	LCD DISP TB0198BMTTN-P(A1) 54PIN FOR CD-7500/7600D	1	
294	025-TA02000-26000	TACT-SW 2P TP-1126C 3X6MM H=2.6MM DIP TYPE	3	
295	025-TA02000-43000	TACT SW TA-02 2P 6.5X3.5 H=4.3MM 200G	15	
296	036-H020000-18000	DETACHABLE CON 18P P=2.0mm PLUG	1	
297	044-RMS0380-30000	IR RECIVER 3PIN MINI L-TYPE H=3.6 FOR CD7608/7609	1	
298	049-E114100-05000	12MM ENCODER VOL W/SW 30DET/15PUS (H=17.5)	1	SW1
299	243-3896000-Q0000	CD-3896 VFD-SIDE-COVER-L BLACK [PAPER 0.1T]	1	
300	245-1198000-BBK00	1198 CONNECTOR COVER SHEET	1	
301	245-3300000-D0000	LED FILTER-"T-SHAPE" 20x12MM [0.1T/TRACING FILM]	2	
302	245-7500000-A0000	CD-7500 REFLECTOR-PAPER	1	
303	245-7500000-B0000	CD-7500 LCD-FILTER	1	
304	245-7500000-C0000	CD-7500 LED-SIDE-COVER SHEET	1	
305	246-WE14200-04400	SIDE-REFLECTIONAL-PAPER	2	
306	414-7500P00-2CR00	CD-7500 LCD-REFLECTOR [PMMA CLEAR]	1	
307	414-7617B00-2BE00	CD-7617 {PTY-AF-TA-KNOB}-REFLECTOR [PMMA BLUE]	1	
<b>S03-7617D00-K10000-000</b>		<b>CD-7617D FRONT PCB (WHE/BLU) REMOTE SMT ASSEMBLY</b>	<b>1</b>	
308	001-7500D00-A6000	PCB CD-7500 LED	1	
309	001-7617D00-K1000	PCB CD-7617D RDS FRONT [REV-1]	1	
310	002-0652300-H0000	IC PT6523LQ/ LCD DRIVER [LQFP64]	1	IC
311	011-C221A00-20000	CHIP RES [1206] 220 OHM ±5%	1	R29.
312	011-C561A00-20000	CHIP RES [1206] 560 OHM ±5%	1	R26
313	011-S000A00-20000	CHIP RES [0805] 0 OHM 5%	1	R40.

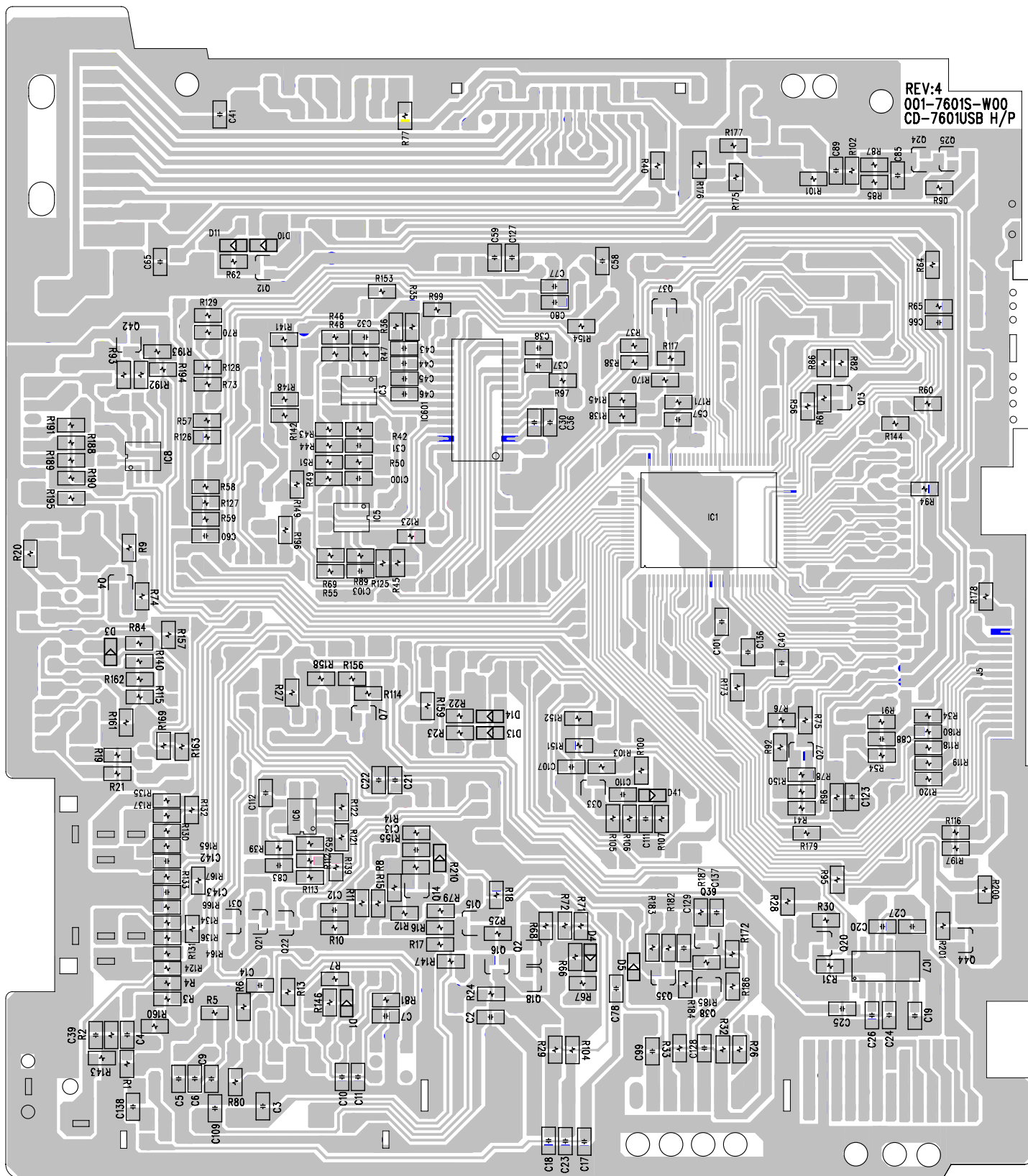
Item	Material Code	Brief Description	Qty	Remarks
314	011-S102A00-20000	CHIP RES [0805] 1K OHM 5%	2	R9.21.
315	011-S152A00-20000	CHIP RES [0805] 1.5K OHM $\pm$ 5%	2	R10.22.
316	011-S181A00-20000	CHIP RES [0805] 180 OHM $\pm$ 5%	2	R16.35.
317	011-S221A00-20000	CHIP RES [0805] 220 OHM $\pm$ 5%	3	R17.5.3
318	011-S222A00-20000	CHIP RES [0805] 2.2K OHM 5%	3	R23.11.27.
319	011-S331A00-20000	CHIP RES [0805] 330 OHM $\pm$ 5%	2	R18.6.
320	011-S332A00-20000	CHIP RES [0805] 3.3K OHM $\pm$ 5%	2	R24.12.
321	011-S471A00-20000	CHIP RES [0805] 470 OHM 5%	6	R4.19.7.1.34.28.
322	011-S472A00-20000	CHIP RES [0805] 4.7K OHM $\pm$ 5%	4	R30.31.25.R13
323	011-S473A00-20000	CHIP RES [0805] 47K OHM $\pm$ 5%	1	R32.
324	011-S513A00-20000	CHIP RES [0805] 51K OHM $\pm$ 5%	1	R15.
325	011-S681A00-20000	CHIP RES [0805] 680 OHM +/-5%	8	R8.33.36.2.37.38.39.20.
326	011-S822A00-20000	CHIP RES [0805] 8.2K OHM $\pm$ 5%	1	R14.
327	014-S104B00-80000	CHIP CAP [0805] 104P (0.1uF) 25V +80-20%	2	C1.2
328	014-S681C00-50000	CHIP CAP [0805] 681P (680PF) 50V 10%	1	C3.
329	023-D000000-BE000	SMT LED [0603] BLUE (470nm) 50mcd 3.2V 20MA 130DEG	15	
330	023-F283500-WE200	SMT LED (2.8x3.5x1.9) WHITE 800-1000mcd 3.2V 20mA	1	
<b>P02-CCD7617-270418-00A</b>		<b>CD-7617D MW/FM/ORIT/RDS [HYUNDAI H- CDM8037]RU-64134T PACKING ASSEMBLY</b>	<b>1</b>	
331	060-7617083-270418A	REMOTE CD-7617-D USB/MMC/MP3 [HYUNDAI H- CDM8037]	1	
332	061-CR20250-B0000	BUTTON LITHIUM BATTERY CR2025 3.0V	1	
333	212-5209000-14S00	SPRING WASHER ID=5.2x9.0x1.4T	2	ACC:2
334	212-5210000-05P00	PLATE WASHER ( $\phi$ 5.2)	2	ACC:2
335	217-1001E00-E1200	MOUNTING STRIP [EGI-1.2T]	1	
336	222-3896S00-E0600	CD-3896 SLEEVE-CASE [EGI-0.6]	1	
337	227-7803000-EA500	CD-7803 CASE CUSHION (BLACK W/ ADHESIVE TAPE)	1	
338	233-N050W00-H0000	HEX NUT: M5	1	
339	234-PA05000-16000	SCREW TS 5.0 x 16.0 MM PA NICKLE TYPE-A TIP	1	
340	235-3896000-E1000	SET KEY	2	
341	301-0C02500-08000	POLY BAG OPEN 2.5"x8"XT0.04	1	
342	301-0C06600-10500	POLY BAG 6-5/8" X 10-1/2" X 0.04MM THK [PE]	1	

Item	Material Code	Brief Description	Qty	Remarks
343	301-0C11000-14000	POLY BAG 11"x14"XT0.04	1	
344	303-MR30000-PS060	POLYFOAM MR-300 264x79.5x57 FOR CAR AUDIO	2	
345	304-7617083-270418A	GIFT BOX CD-7617D RDS/M/F/OIRT(HYUNDAI H-CDM8037]	1	
346	305-7617083-270418A	I/M CD-7617DRDS MW FM OIRT [HYUNDAI H-CDM8037]	1	
347	306-7617083-270418A	CARTON BOX 6PCS CD-7617D MP3 [HYUNDAI H-CDM8037]	0.17	
348	308-7617083-270418A	TOP LABEL CD-7617D RDS/M/F/OIRT(HYUNDAI H-CDM8037)	1	
349	311-140X200-0830100	WARRANTY CARD 140X200 [HYUNDAI]	1	
350	311-280X200-0830000	SERVICE CENTER LIST 280X200 (2-LANG)[HYUNDAI]	1	
351	315-029X025-LSB001A	LASER BEAM LABEL 29X25 YEL/BLK [LASER SYMBOL]	1	
352	315-052X025-CAU002A	CAUTION LABEL 52X25 YEL/BLK (3-LANG) HYUNDAI/OXYGE	1	
353	315-054X013-SCR003A	SCREW LABEL 54X13 RED W/WHE LETTER COMMON USE	2	
354	402-3300S00-4BK00	CD-3300 NOSE-PIECE-CASE [PP BLACK]	1	
355	441-7500A00-1BK00	CD-7500 TRIM COVER [ABS BLACK]	1	

\*\*\* [End of Report] \*\*\*



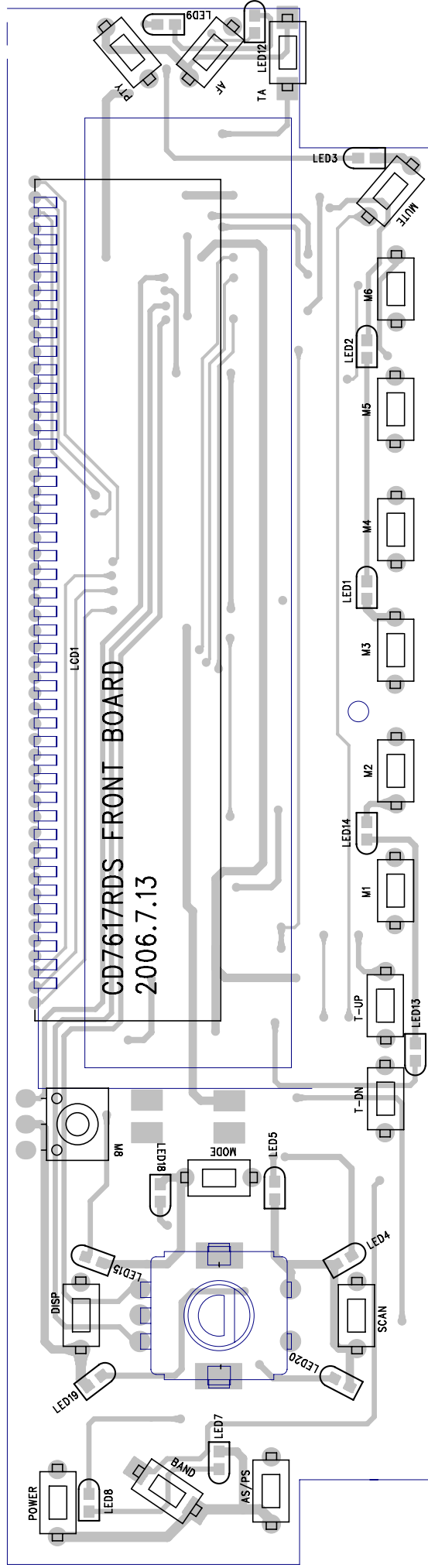
REV:4  
001-7601S-W00  
CD-7601USB H/P





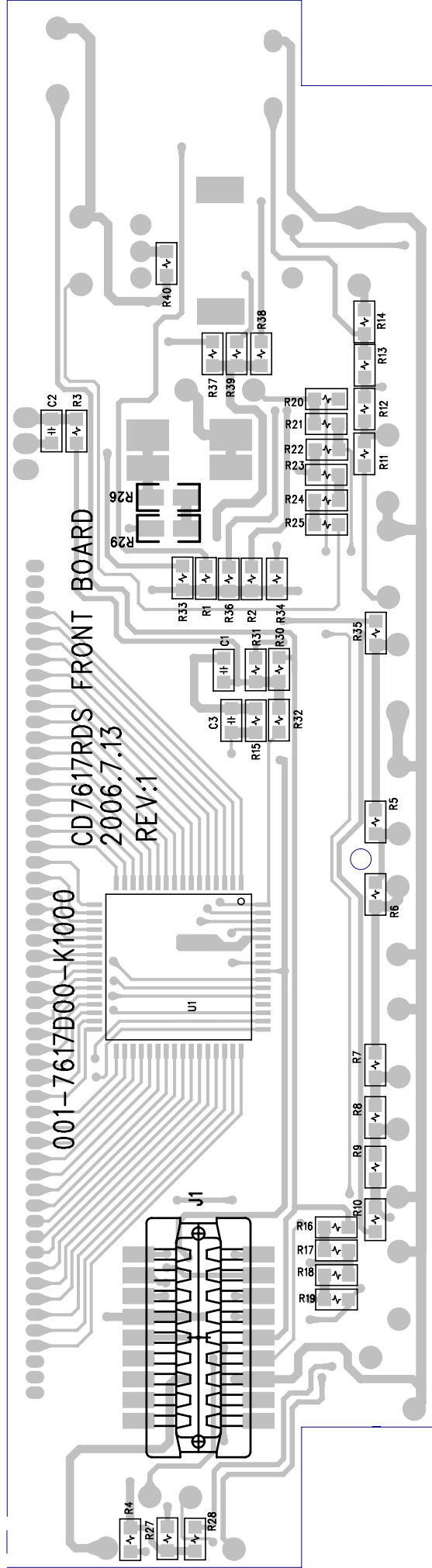
001-7617D00-K1000 REV:1

# CD-7617RDS FRONT TOP LAYER

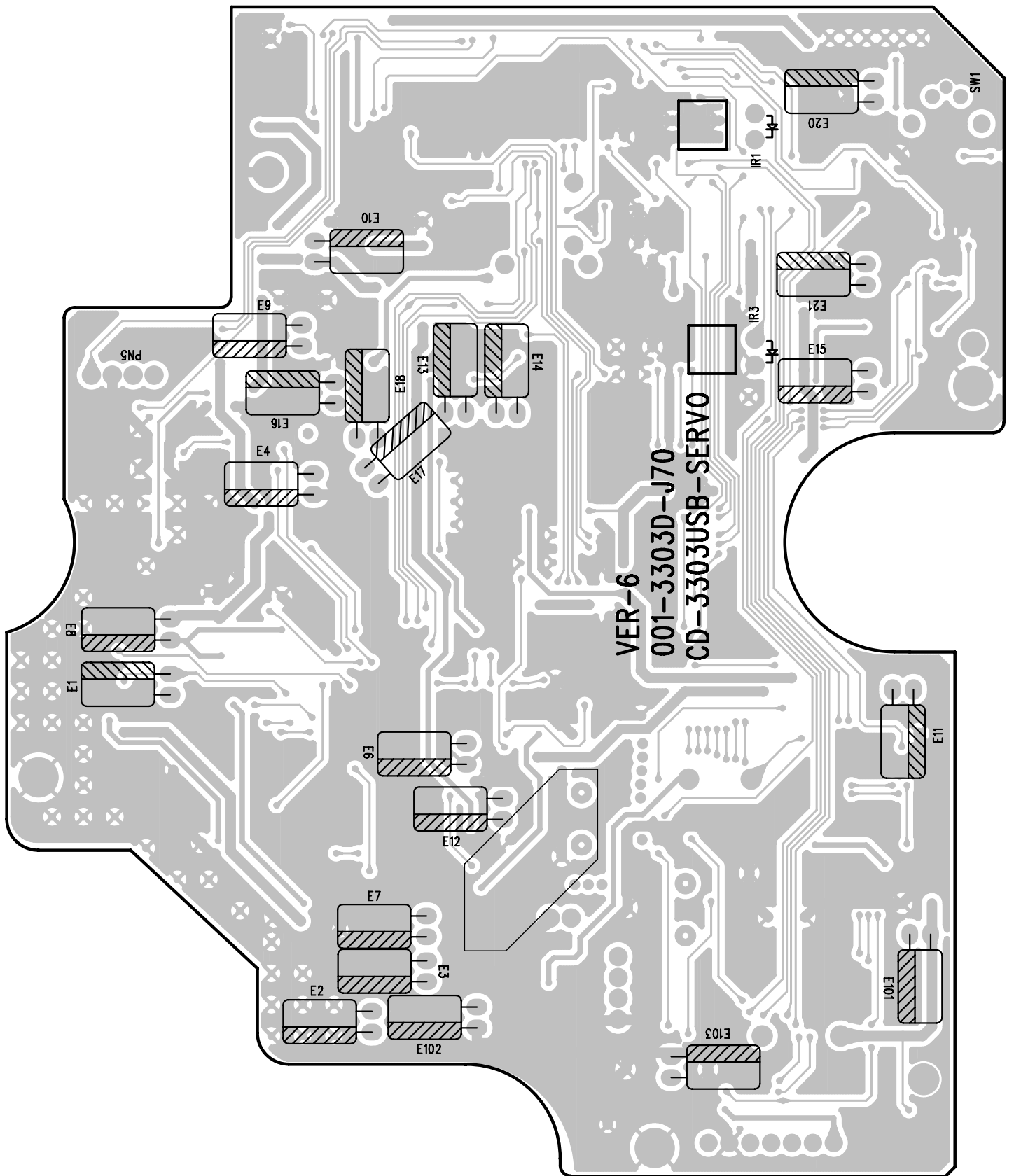


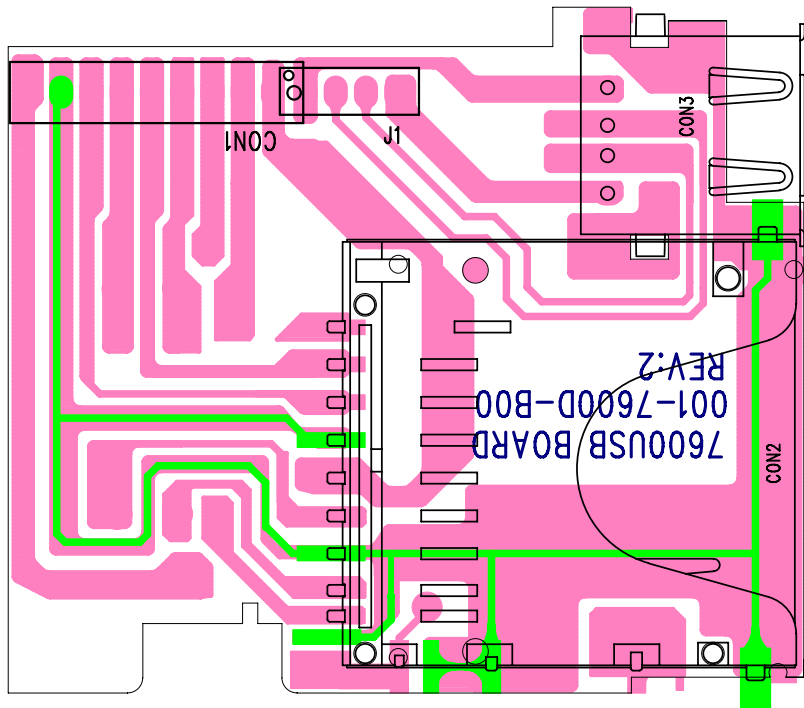


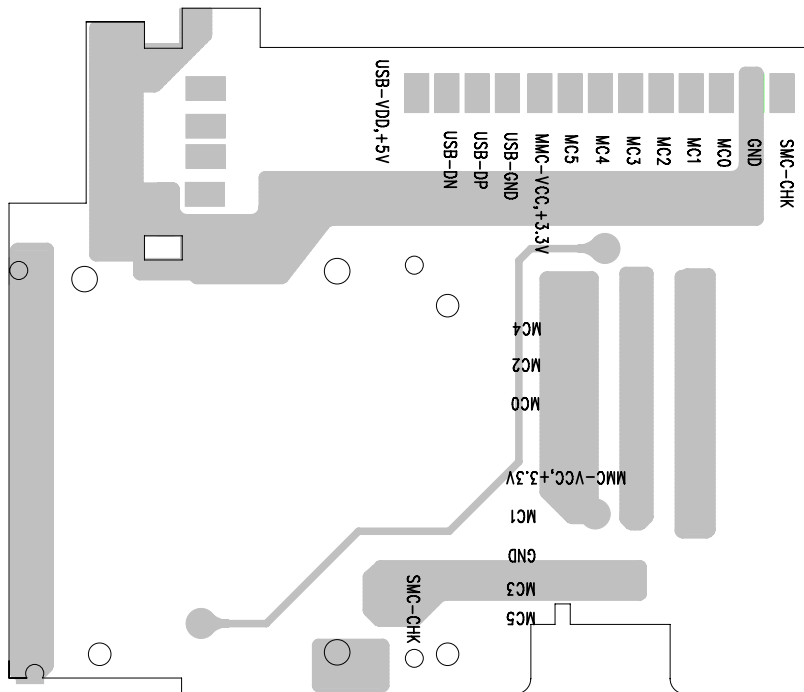
001-7617D00-K1000 REV:1  
CD-7617RDS FRONT BOTTOM LAYER

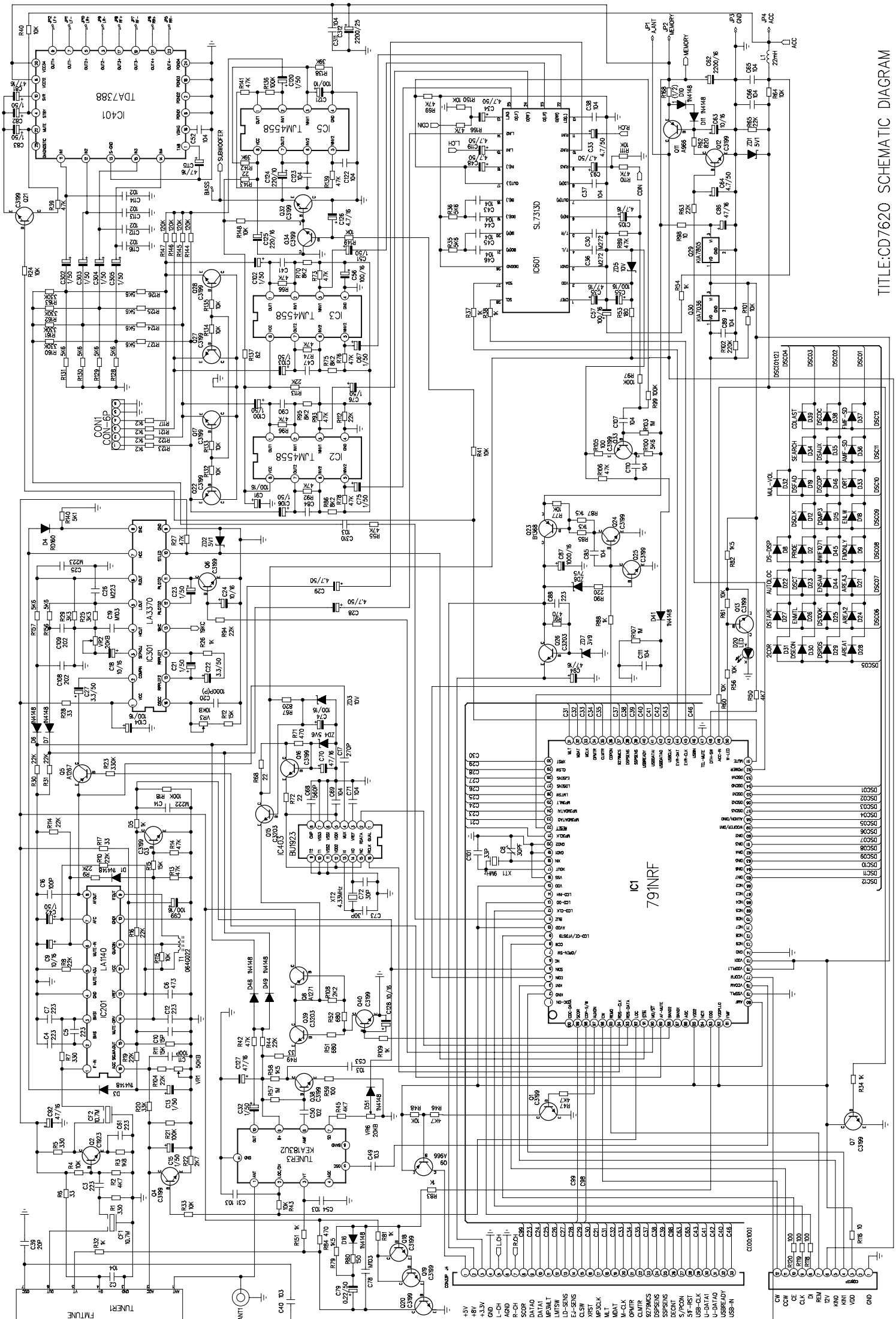












TITLE:CD7620 SCHEMATIC DIAGRAM