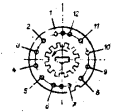
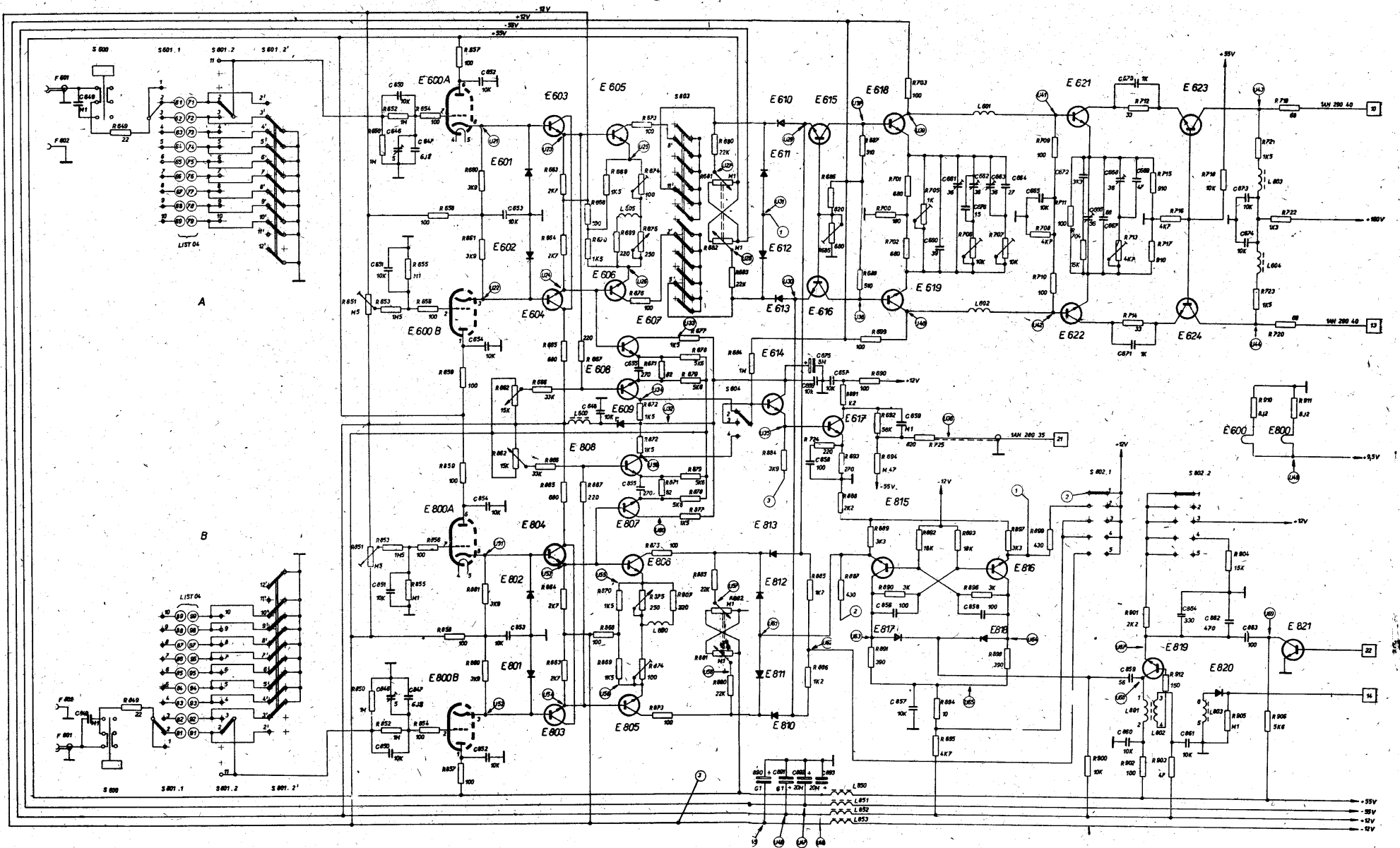


- GAZ 51
- KZZ 76
- PC 86
- GA 201, GA 202, GA 203, KA 206
- KSY 62A, KF 504, KF 506, KF 511, KF 503, KSY 62B
- GE 133
- KA 504

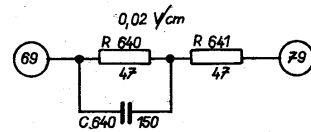
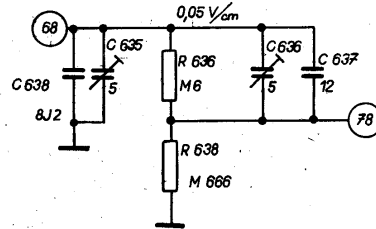
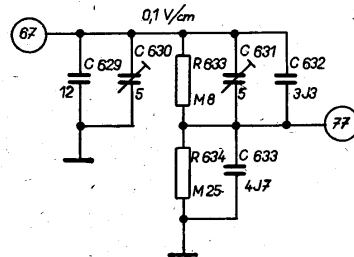
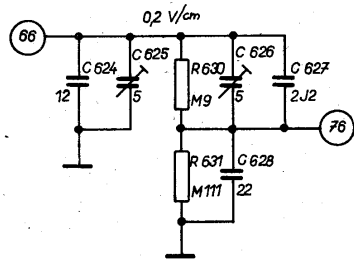
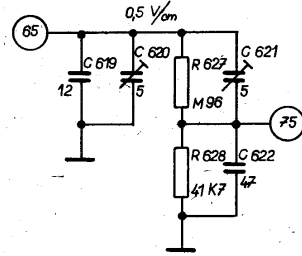
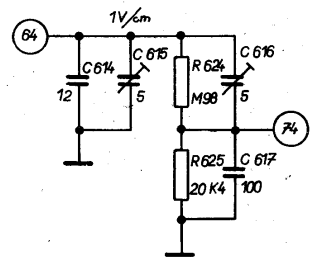
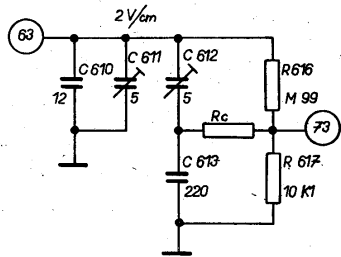
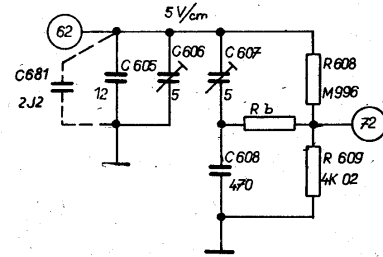
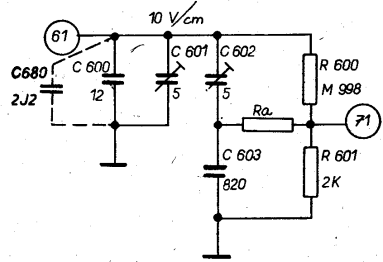


1AN 280 35  
BM 463/1

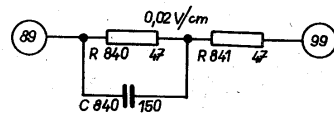
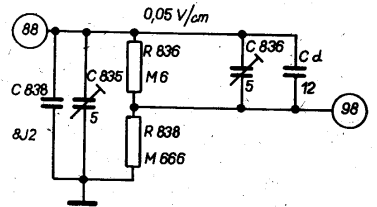
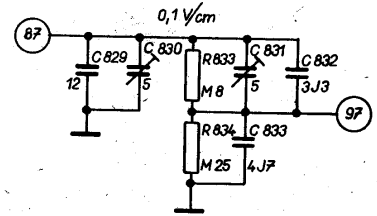
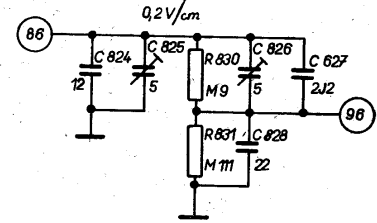
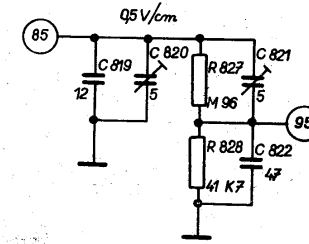
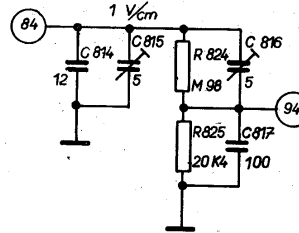
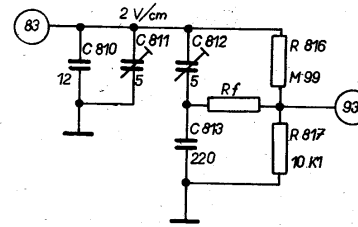
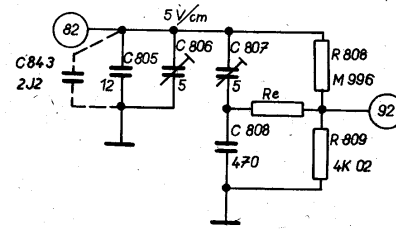
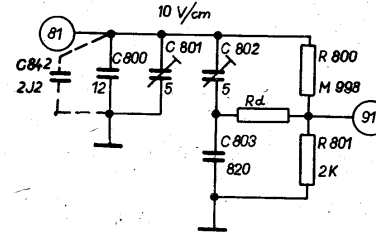




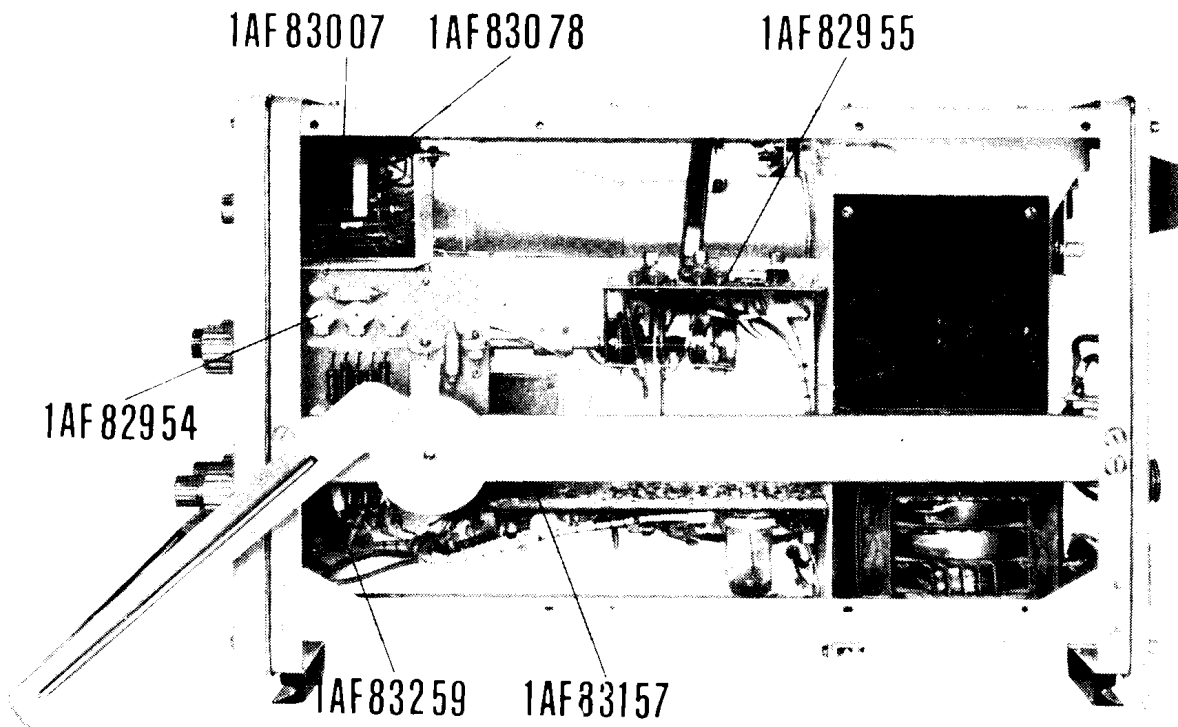
A



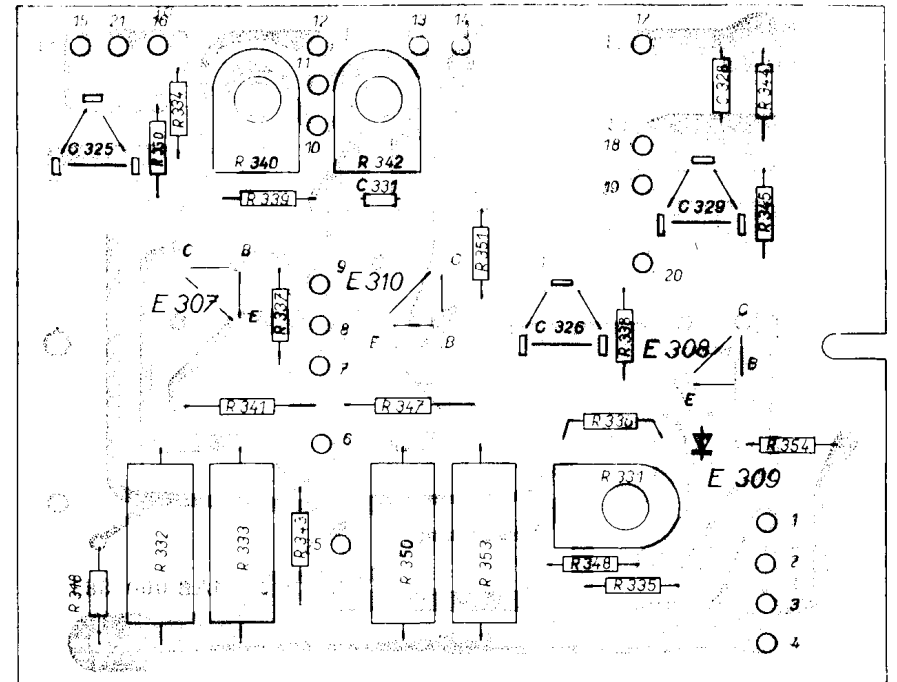
B



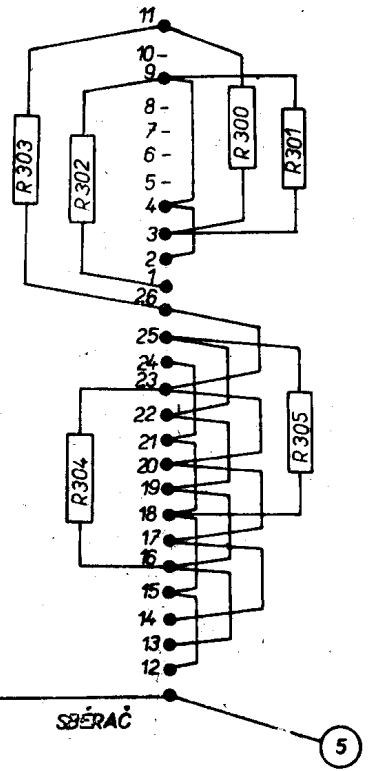
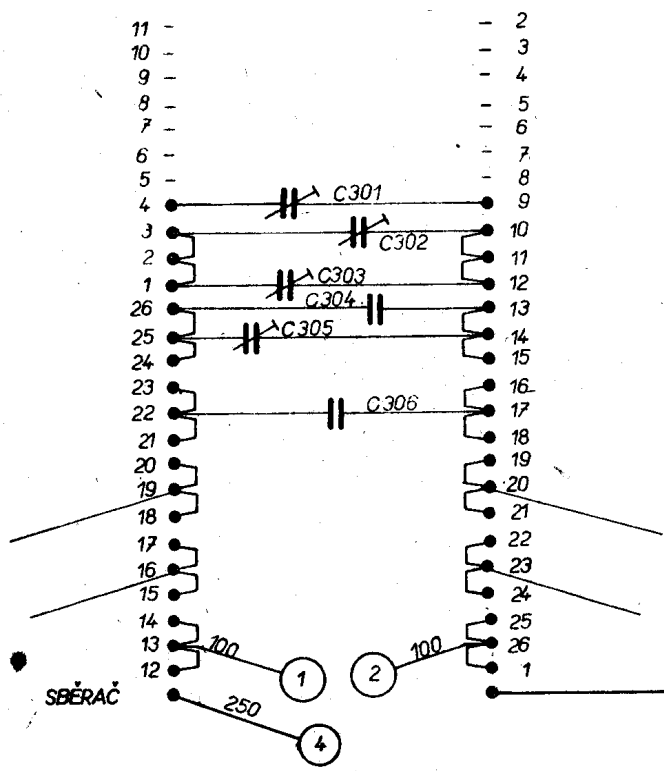
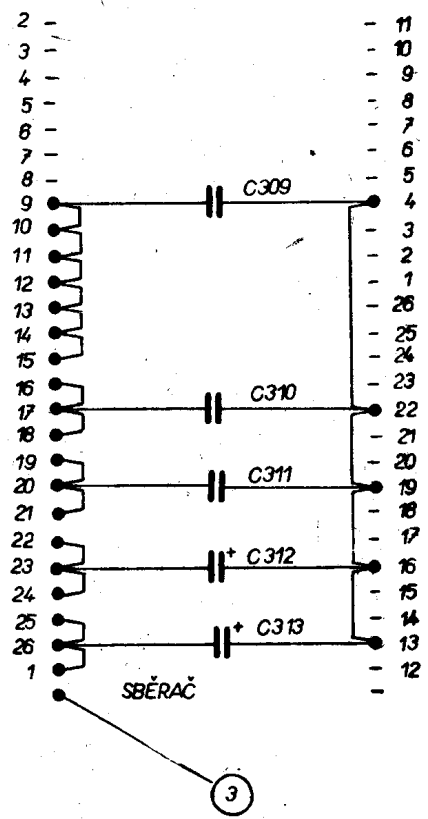
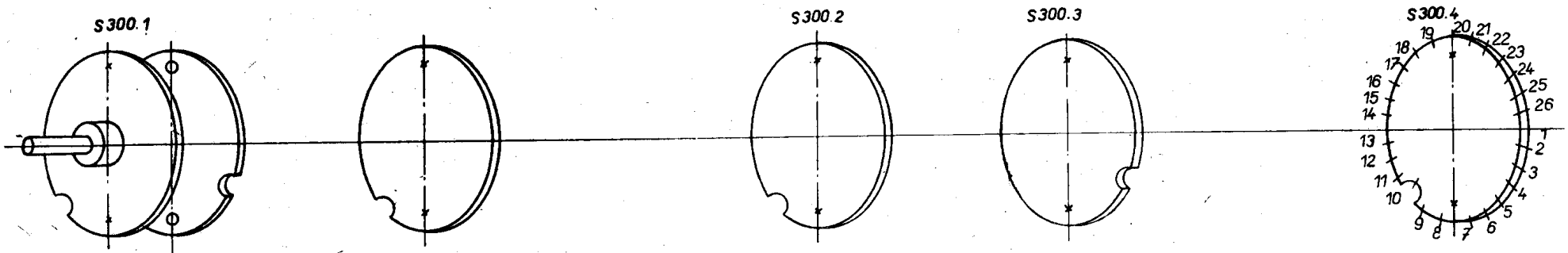
1AN 350 24  
BM 463/4



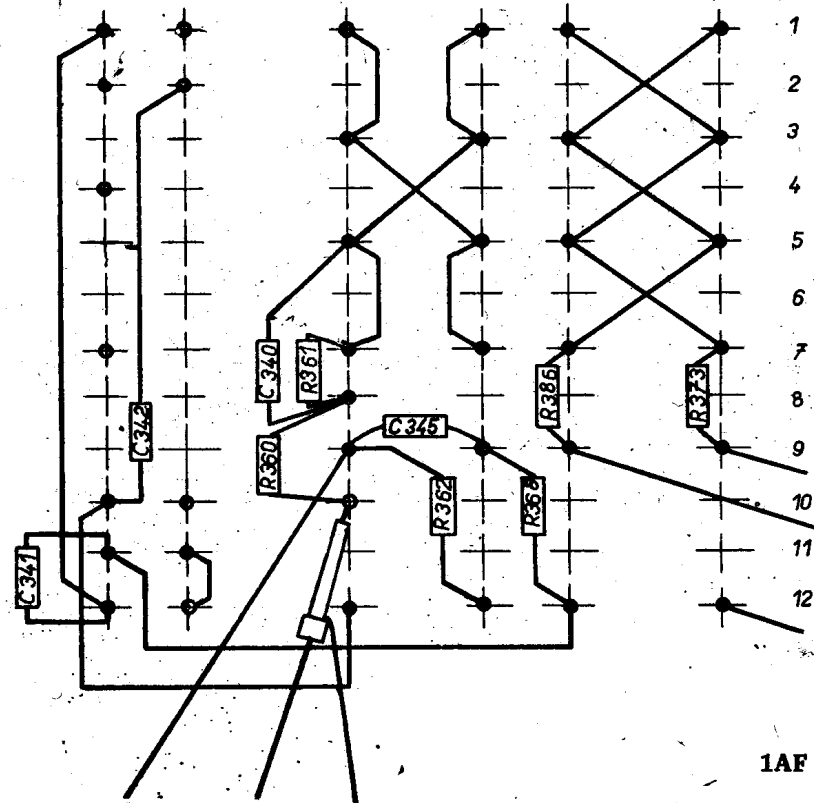
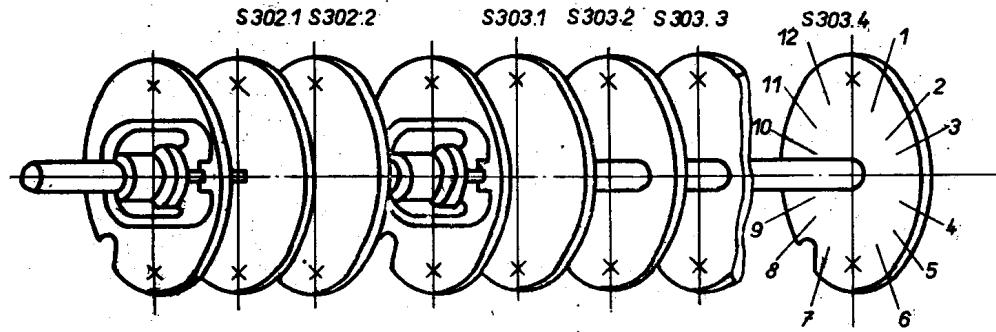
1AN 280 35



1AF 829 55

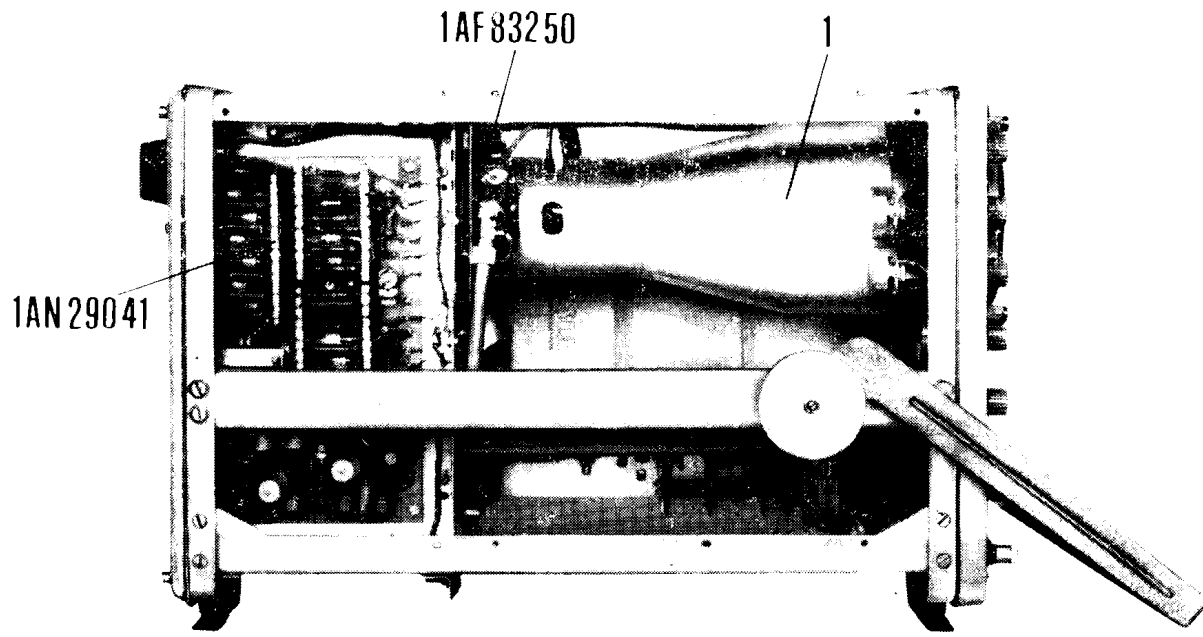


1AF 829 54.1

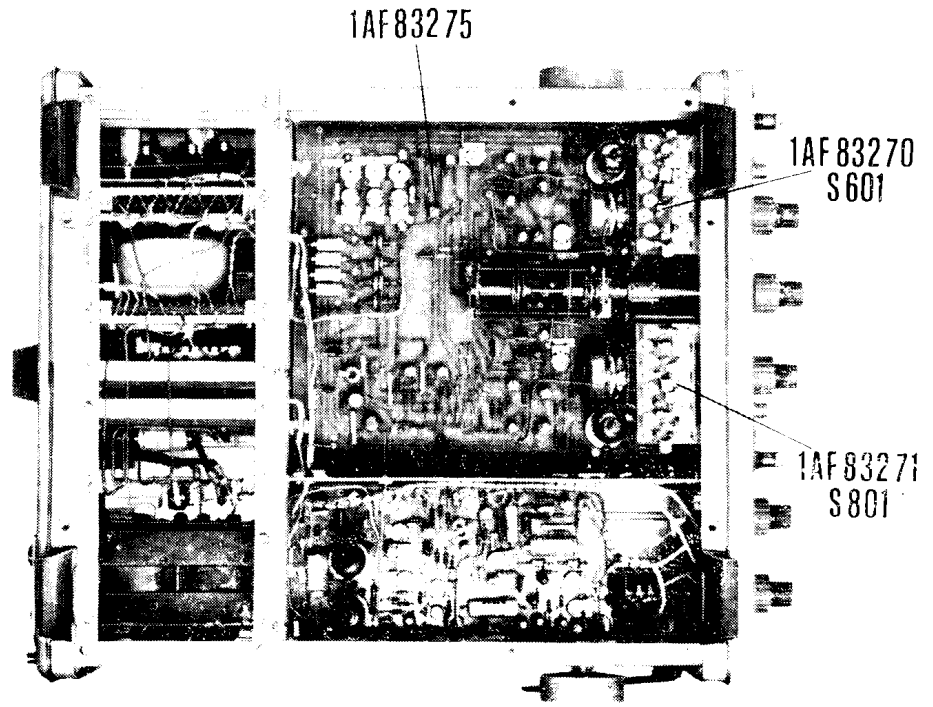


1AF 832 59

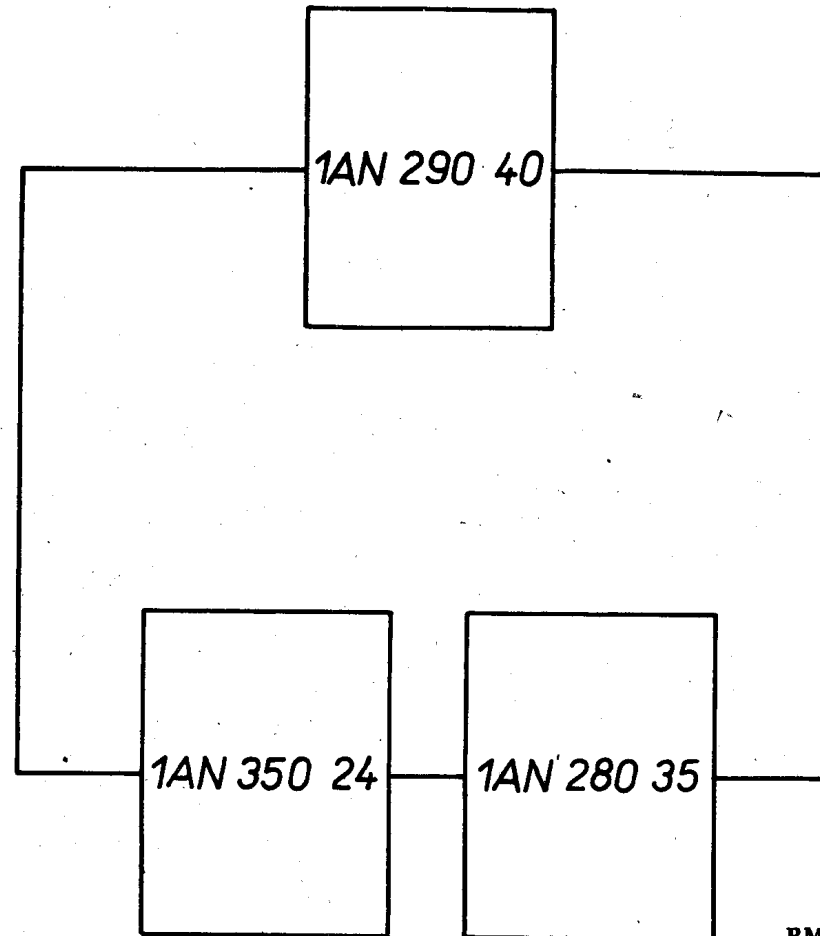




1AN 350 24



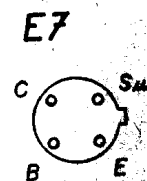
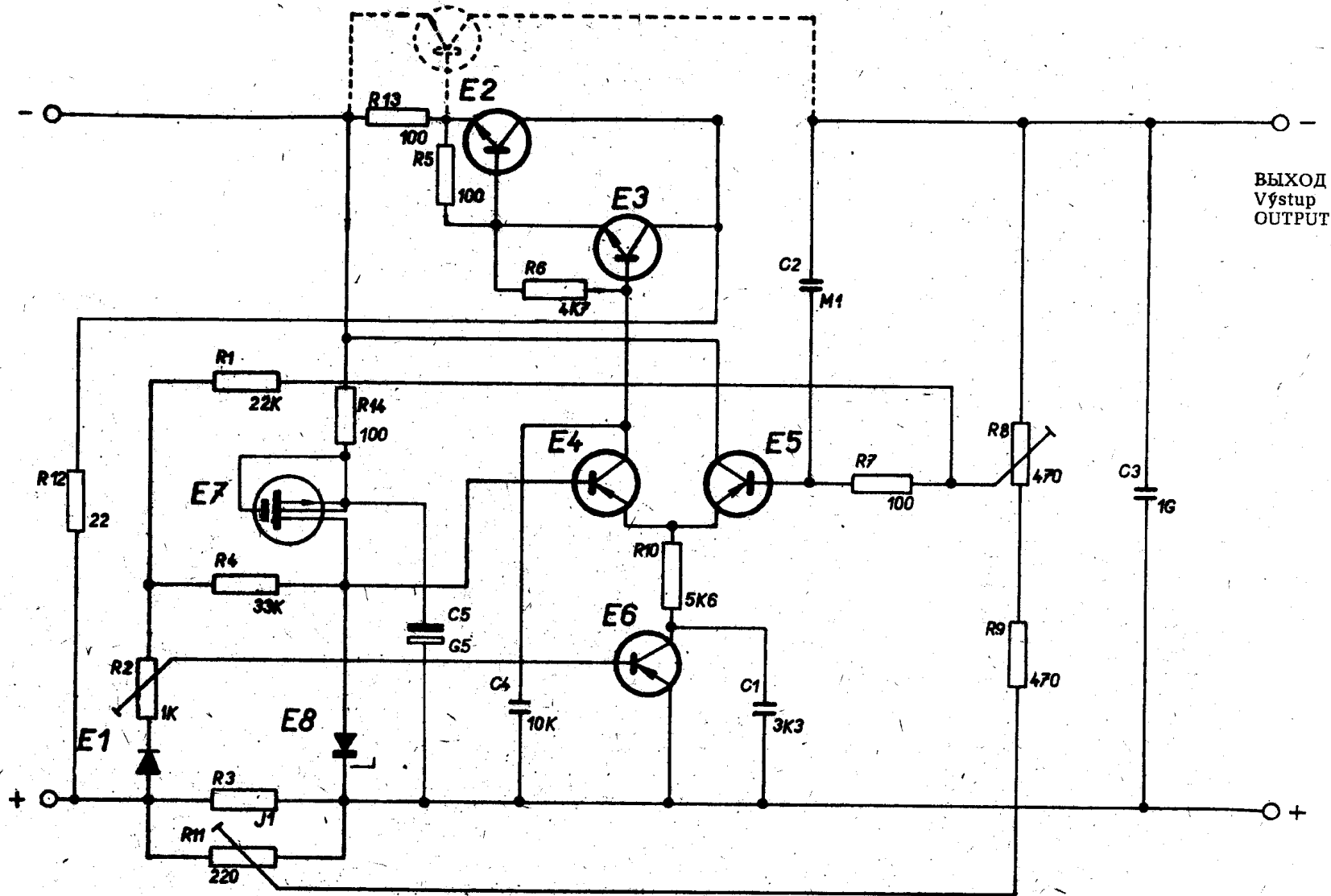




**BM 463**

|            |                        |                          |                      |
|------------|------------------------|--------------------------|----------------------|
| 1AN 290 40 | — Zdroje               | — Источники              | — Power supplies     |
| 1AN 280 35 | — Základna časová      | — Генератор развертки    | — Time base          |
| 1AN 350 24 | — Zesilovač vertikální | — Вертикальный усилитель | — Vertical amplifier |

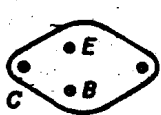
Vstup  
ВХОД  
INPUT



E1



E2



E4, E5, E6

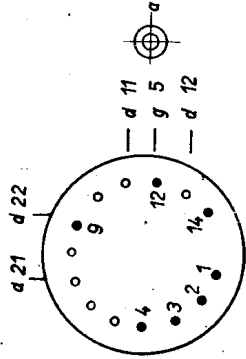


E3

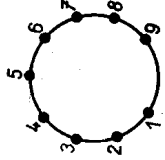


IAN 758 49  
BM 463/5

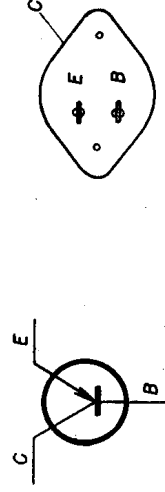
E 150



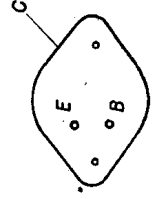
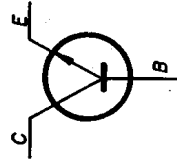
E 301, E 316,  
E 600, E 800



E 56, E 105, E 106



E 2 (1AN 758 20), E 104

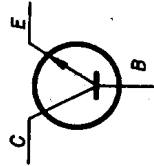


E 54, E 320, E 338, E 339



E 1 (1AN 758 01), E 3 - E 6 (1AN 758 20, E 50,  
E 51, E 52, E 55, E 303, E 305, E 307, E 308,  
E 310, E 313, E 314, E 317, E 321, E 322, E 323,  
E 325, E 327, E 333, E 334, E 336, E 352,  
E 356, E 603 - E 608, E 614 - E 619, E 621 - E 624,  
E 803 - E 808, E 815, E 816, E 819, E 821

E 53, E 300, E 302, E 306, E 315, E 318, E 319,  
E 324, E 328, E 331, E 332, E 335, E 340,  
E 351, E 353, E 355, E 601, E 602, E 610 - E 613,  
E 801, E 802, E 810 - E 813, E 817, E 818, E 820



E 57 - E 66, E 107 - E 110, E 111 - E 114,  
E 115 - E 118, E 119 - E 122



E 101, E 102, E 103



E 4 (1AK 758 01), E 609



E 329, E 330



E 311, E 312, E 337, E 341



E 1 (1AN 758 20), E 2, E 3 (1AK 758 01),  
E 304, E 309, E 326

