

Service Manual

AUTOMOTIVE MULTI-MEDIA

COMPACT
disc
DIGITAL AUDIO



CQ-EA1360L

AUDI

CQ-EA1360L

CQ-EA1362L

CQ-EA1363L

CQ-EA1360LA

CQ-EA1362LA

CQ-EA1363LA

CQ-EA1363LB

AM/FM MPX ELECTRONIC TUNING
RADIO with Stereo Cassette Tape
Player and CD Changer

DESTINATION SDARS : North America

SDARS (CQ-EA1360L-62L)

DESTINATION w/o SDARS : America + Canada

w/o SDARS (CQ-EA1360LA-63LB)

PRODUCED AFTER (CQ-EA1360L- 62L) : May, 2003

PRODUCED AFTER (CQ-EA1360LA- 63LB) : Sept.,
2003

PRODUCED AFTER (CQ-EA1363L) : planed Jan, 2005

[Note] See the next page about PART No. and
VEHICLE

Specifications*

General

Power Supply	DC 12V (11V - 16V) Test voltage 14.4V Negative ground"
Current Consumption	Less than 2.5A (0.5W x 2ch)
Power Output	12W x 2ch
Speaker Impedance	4Ω

AM Radio

Frequency Range	530 -1710kHz
-----------------	--------------

Usable Sensitivity 20dB/μV (S/N 20dB)

FM Stereo Radio

Frequency Range	87.7 - 107.9MHz
Usable Sensitivity	6dB/μV (S/N 30dB)

Tape Player (YGFD04729)

Signal to Noise Ratio 55dB (IHF-A)

Panasonic

© 2004 Matsushita Electric Industrial Co., Ltd. All rights reserved. Unauthorized copying and distribution is a violation of law.

Wow and Fluter Less than 0.3%

IDC Player (YGFD13192)

Signal to Noise Ratio More than 60dB (IHF-A)

Channel Separation More than 50dB (IHF-A)


Dimensions** 179(W)x110(H)x163(D)mm

Weight** 3.1kg

* Specifications and the design are subject to possible modification without notice due to improvements.

** Dimensions and Weight shown are approximate.


Dolby noise reduction manufactured under license from Dolby Laboratories Licensing Corporation.

"Dolby" and the double-D symbol  are trade marks of Dolby Laboratories Licensing Corporation.

WARNING

This service information is designed for experienced repair technicians only and is not designed for use by the general public. It does not contain warnings or cautions to advise non-technical individuals of potential dangers in attempting to service a product. Products powered by electricity should be serviced or repaired only by experienced professional technicians. Any attempt to service or repair the product or products dealt with in this service information by anyone else could result in serious injury or death.

IMPORTANT SAFETY NOTICE

There are special components used in this equipment which are important for safety. These parts are marked by  in the Schematic Diagrams, Circuit Board Diagrams, Exploded Views and Replacement Parts List. It is essential that these critical parts should be replaced with manufacturer's specified parts to prevent shock, fire or other hazards. Do not modify the original design without permission of manufacturer.

CONTENTS

	Page	Page	
1 PART No. AND VEHICLE	2	7 IC BLOCK DIAGRAM	9
2 FEATUERS	2	8 REPLACEMENT PARTS LIST	11
3 SYSTEM BLOCK DIAGRAM	3	9 EXPLODED VIEW (Unit)	16
4 VIEW AND CONNECTORS	3	10 WIRING DIAGRAM	17
5 WIRING CONNECTION	5	11 SCHEMATIC DIAGRAM-1	22
6 BLOCK DIAGRAM	6	12 SCHEMATIC DIAGRAM-2	23

1 PART No. AND VEHICLE

[PART No.]

- CQ-EA1360L:8E0 035 195 H
- CQ-EA1362L:4B0 035 195 N
- CQ-EA1363L:8P0 035 195 F
- CQ-EA1360LA:8E0 035 195 G
- CQ-EA1362LA:4B0 035 195 M
- CQ-EA1363LA:8P0 035 195 A
- CQ-EA1363LB:8L0 035 195 N

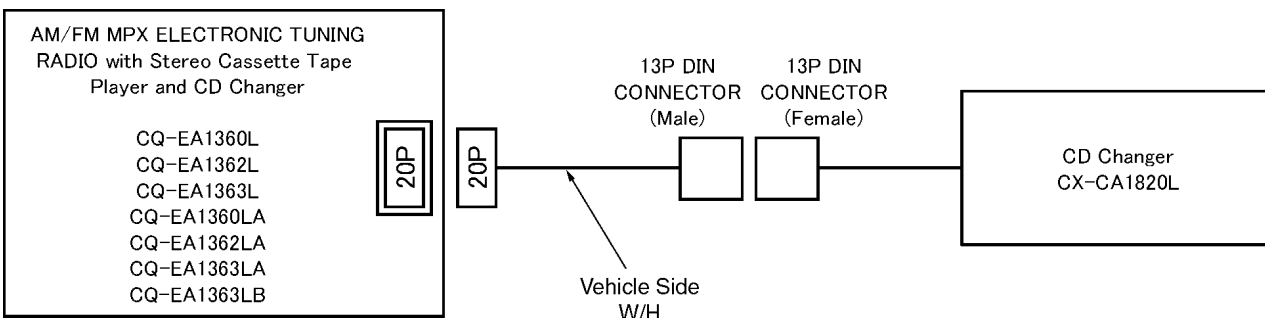
[VEHICLE]

- CQ-EA1360L:AUDI A4
- CQ-EA1362L:AUDI A6
- CQ-EA1363L:AUDI A3 (AB2)
- CQ-EA1360LA:AUDI A4
- CQ-EA1362LA:AUDI A6
- CQ-EA1363LA:AUDI A3 (AB2)
- CQ-EA1363LB:AUDI A3 (A3)

2 FEATUERS

- PLL (Phase Locked Loop) synthesized tuning.
- 12-FM, 12-AM presets with preset scan
- Option menu mode.
- BOSE amp correspondence.
- NCA-1 cassette deck.
- Dolby noise reduction.
- IDC2 CD changer deck.
- CD-R/RW uncorrespondence.
- 8cm CD unavailable.
- CD Changer control.
- SDARS : Satellite Digital Audio Radio System (CQ-EA1360L-62L)

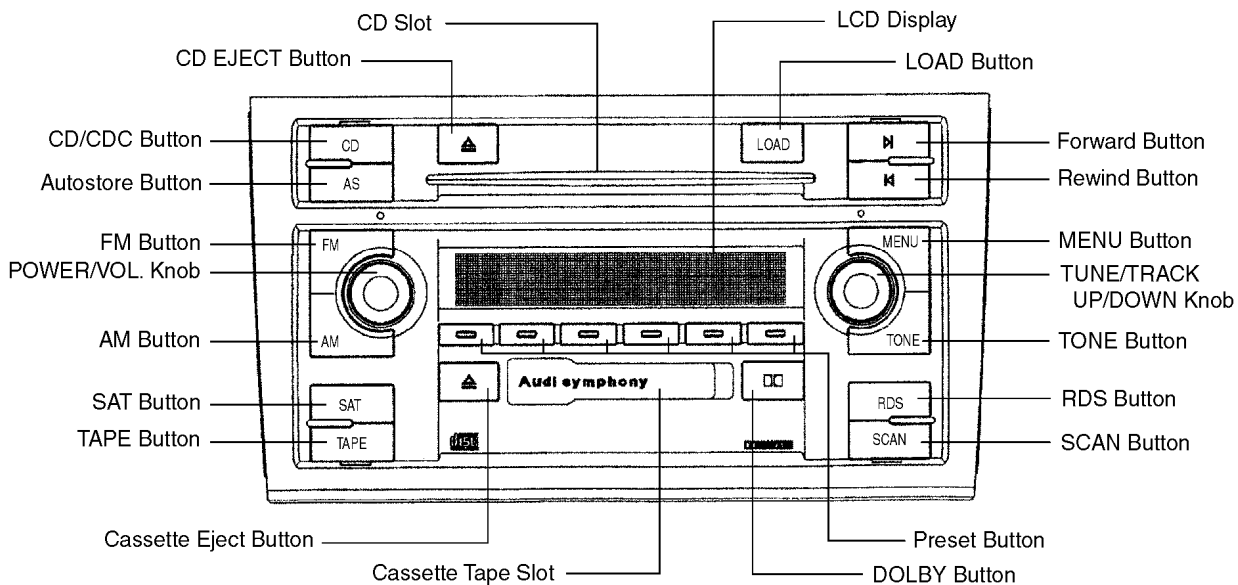
3 SYSTEM BLOCK DIAGRAM



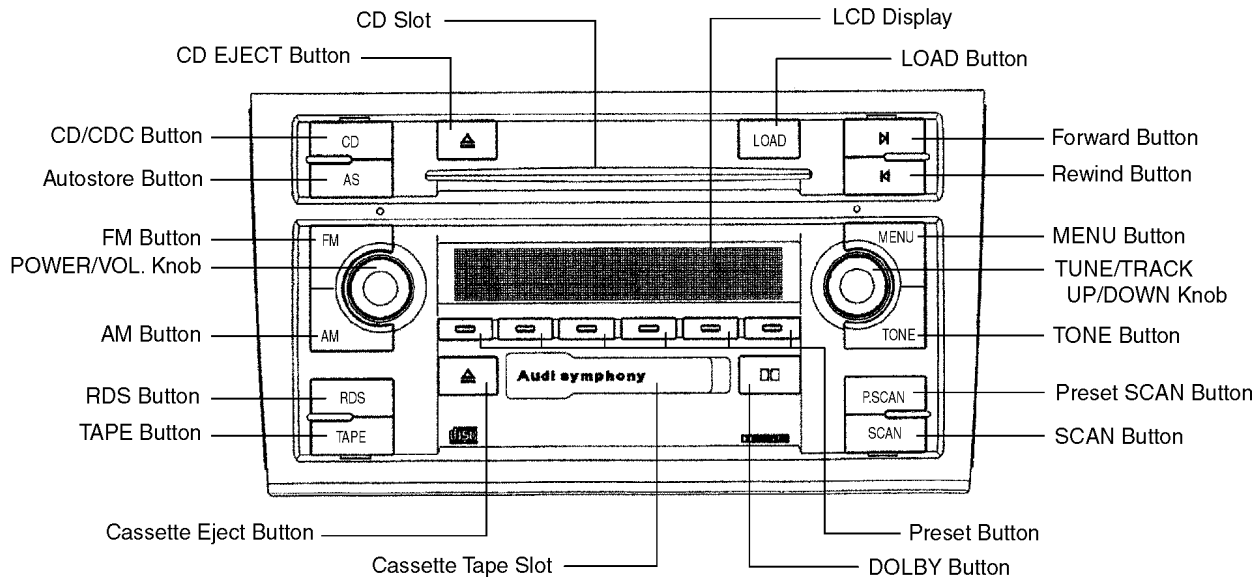
※ This system block might be different from an actual vehicle.

4 VIEW AND CONNECTORS

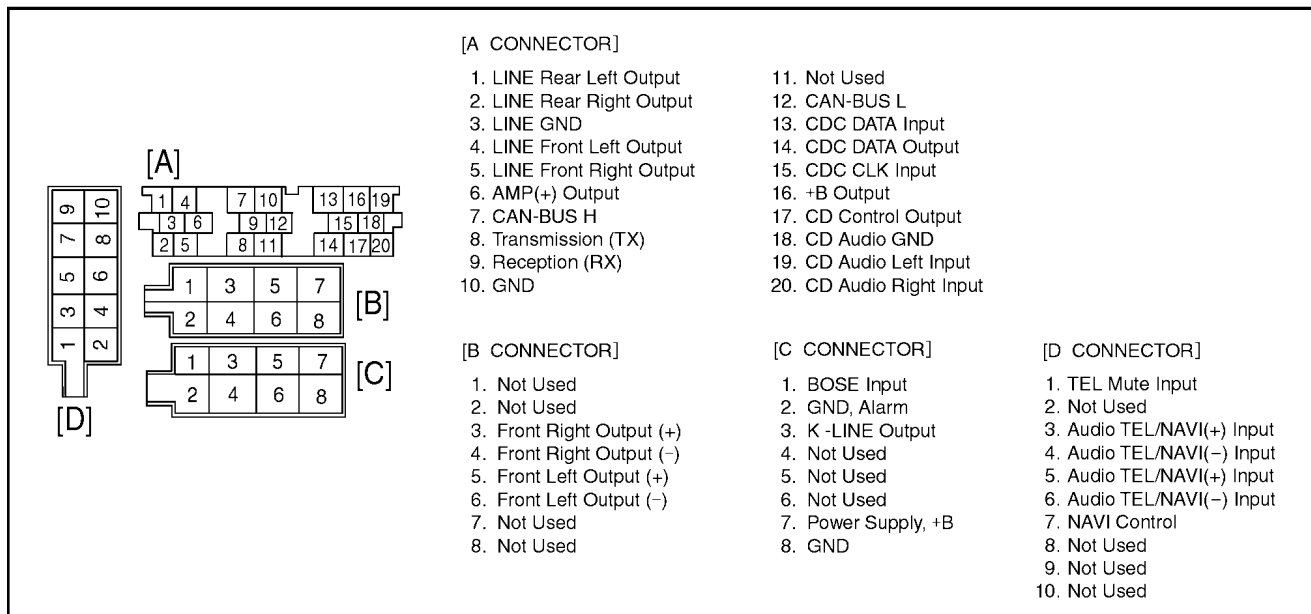
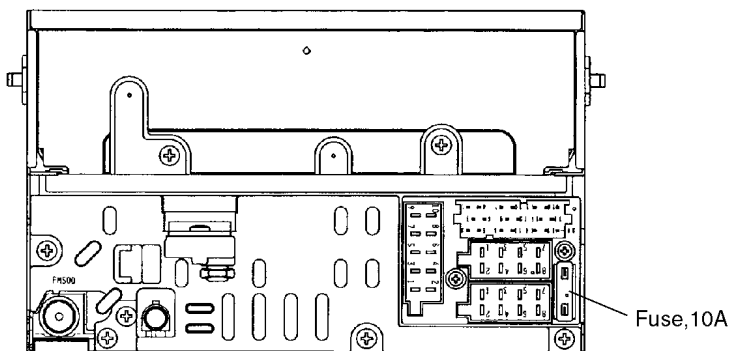
■ Front View (CQ-EA1360L/EA1362L/EA1363L)



■ Front View (CQ-EA1360LA/EA1362LA/EA1363LA/EA1363LB)

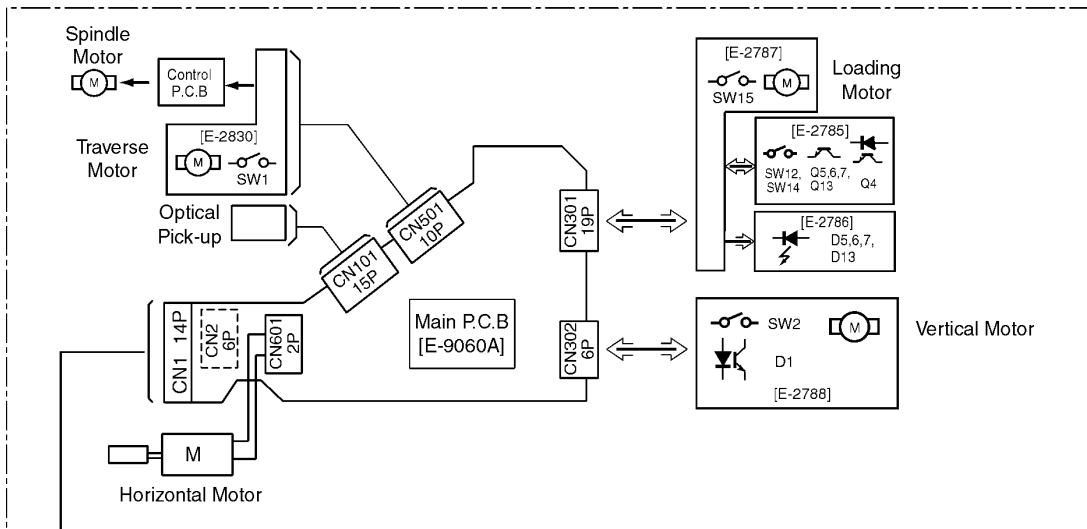


■ Front View

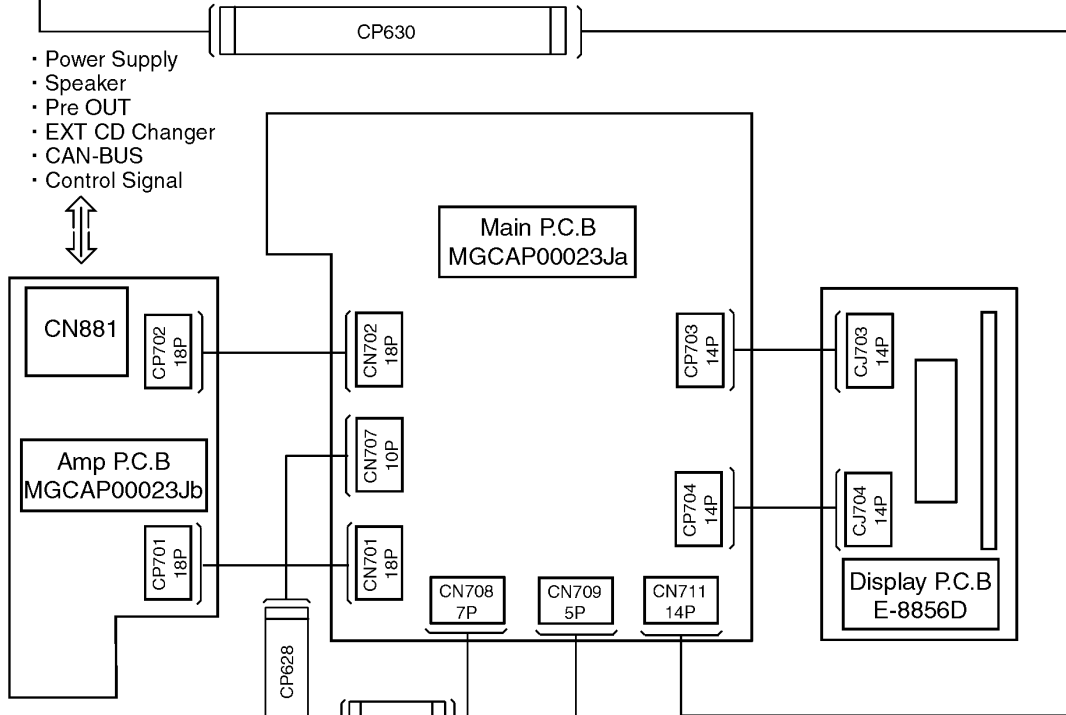


5 WIRING CONNECTION

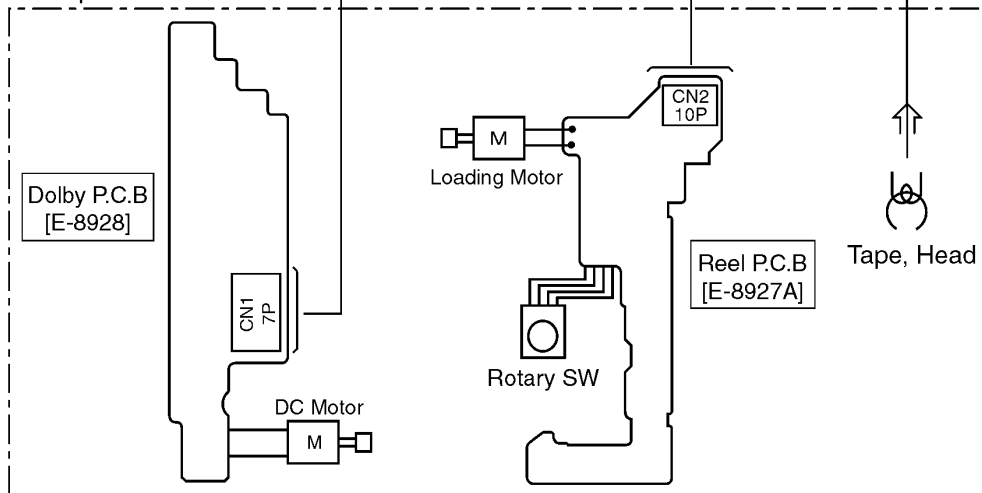
● CD Changer Deck



- Power Supply
- Speaker
- Pre OUT
- EXT CD Changer
- CAN-BUS
- Control Signal

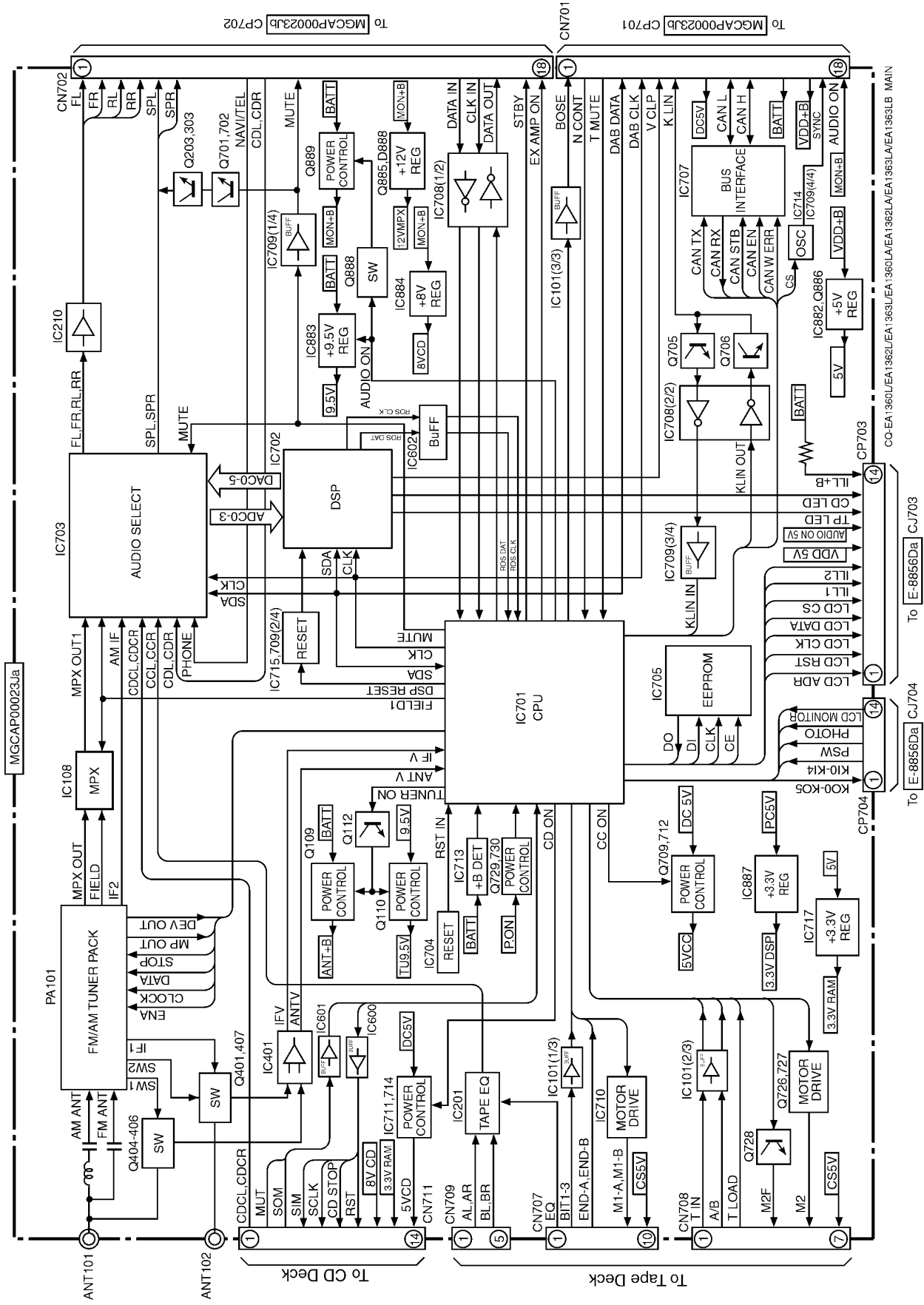


■ Tape Deck

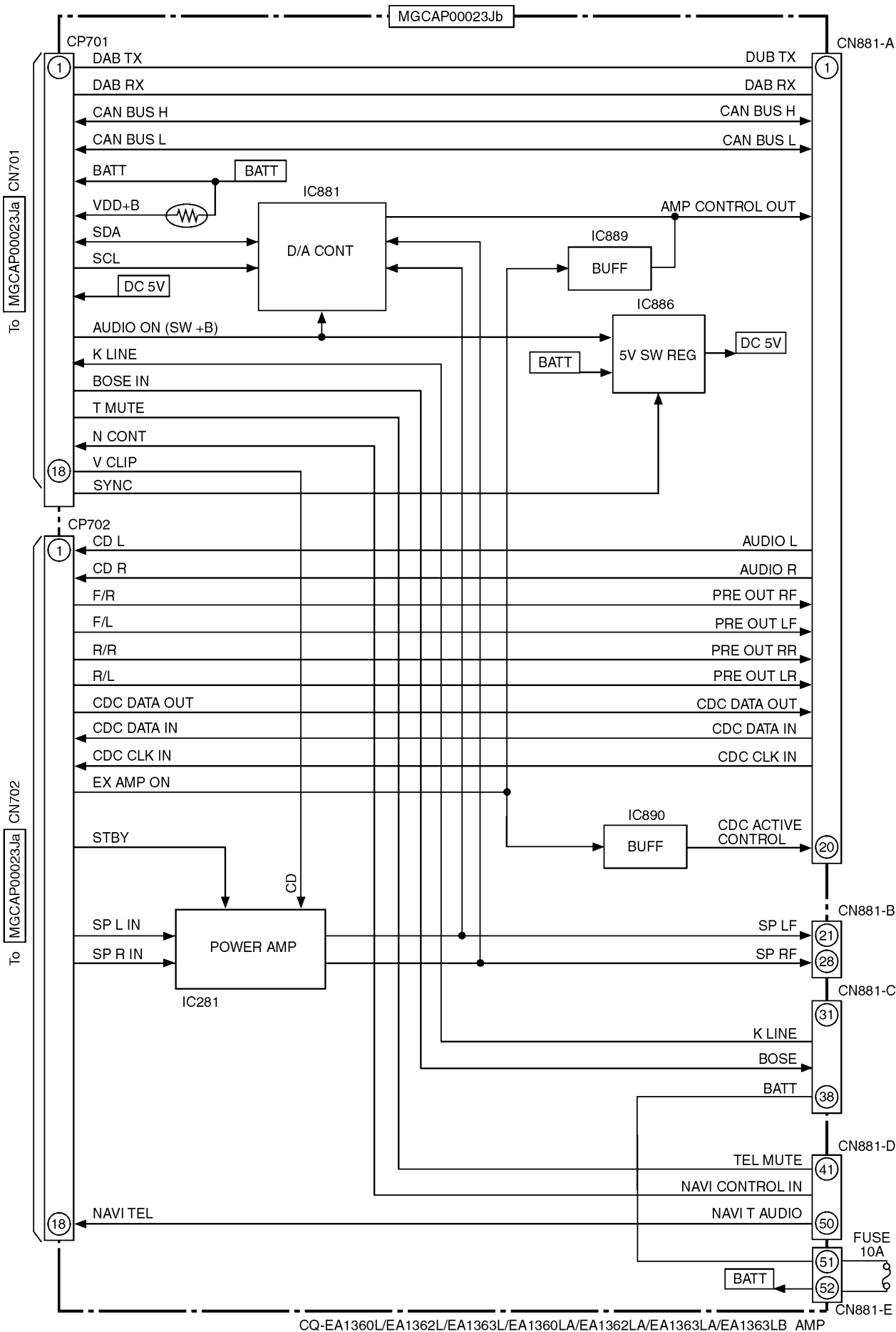


6 BLOCK DIAGRAM

6.1. Main Block

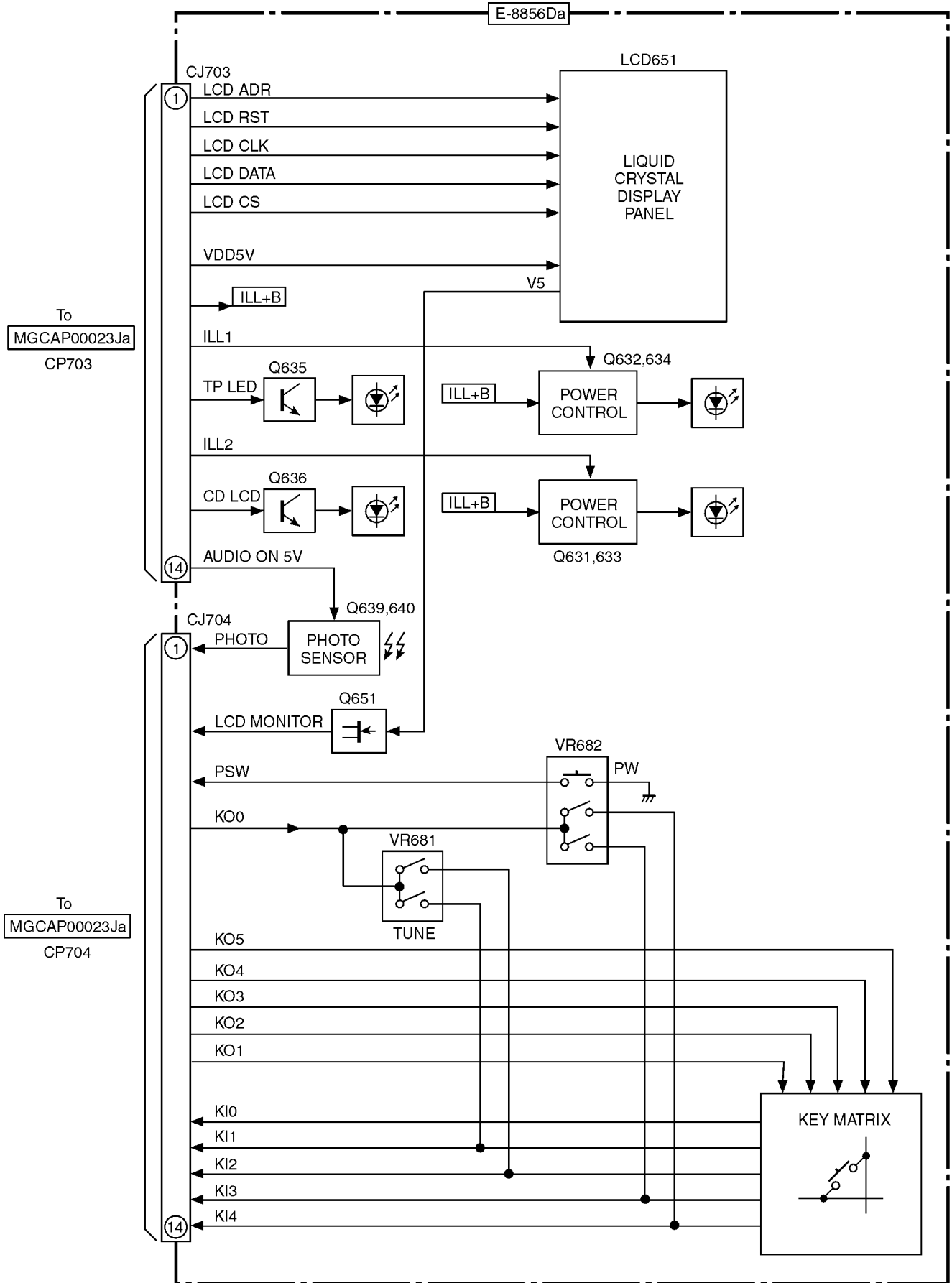


6.2. Amp Block



CQ-EA1360L/EA1362L/EA1363L/EA1360LA/EA1362LA/EA1363LA/EA1363LB AMP

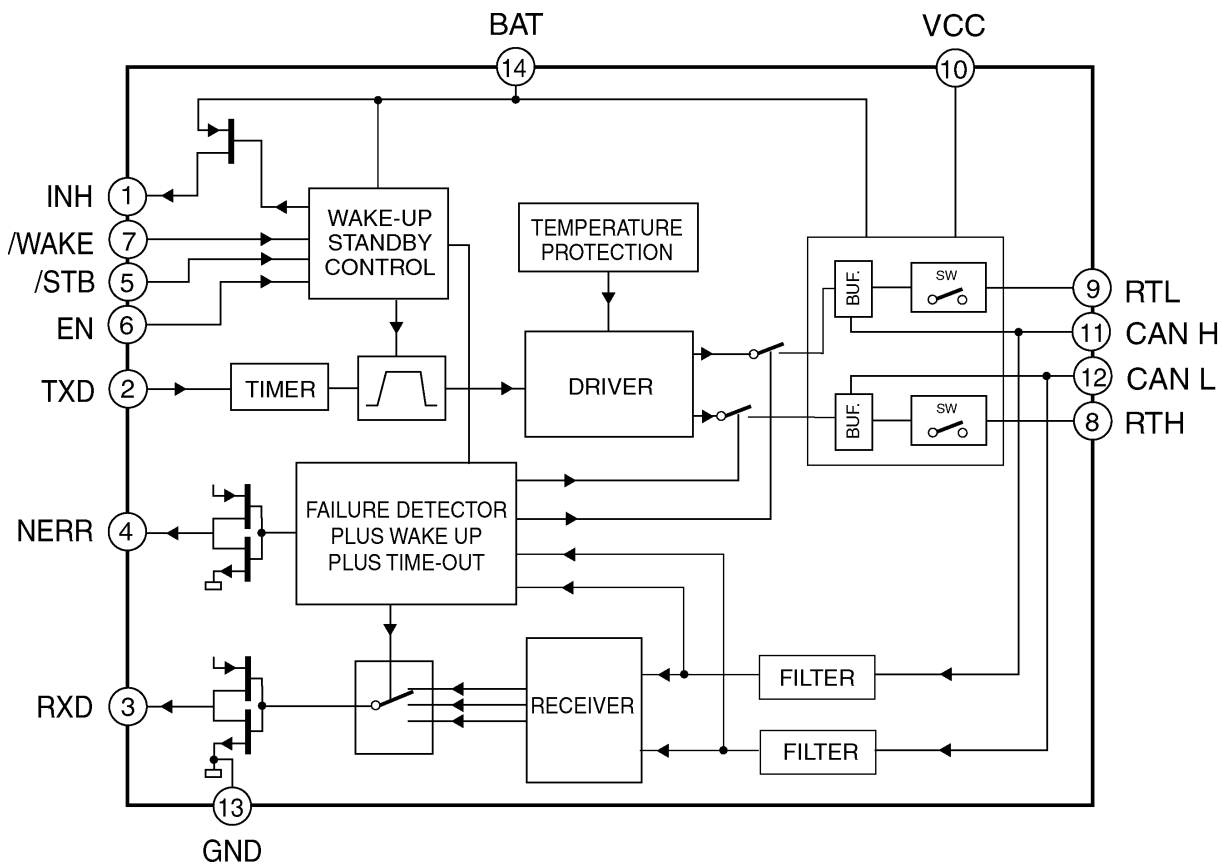
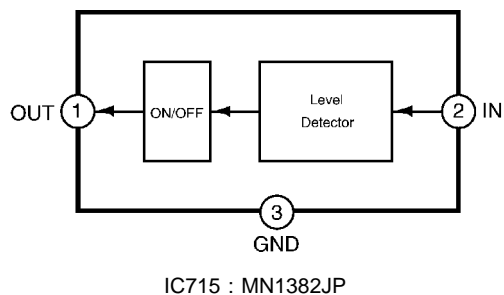
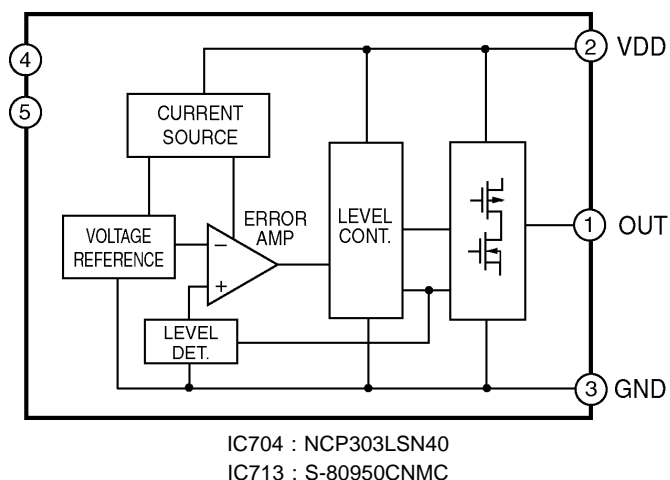
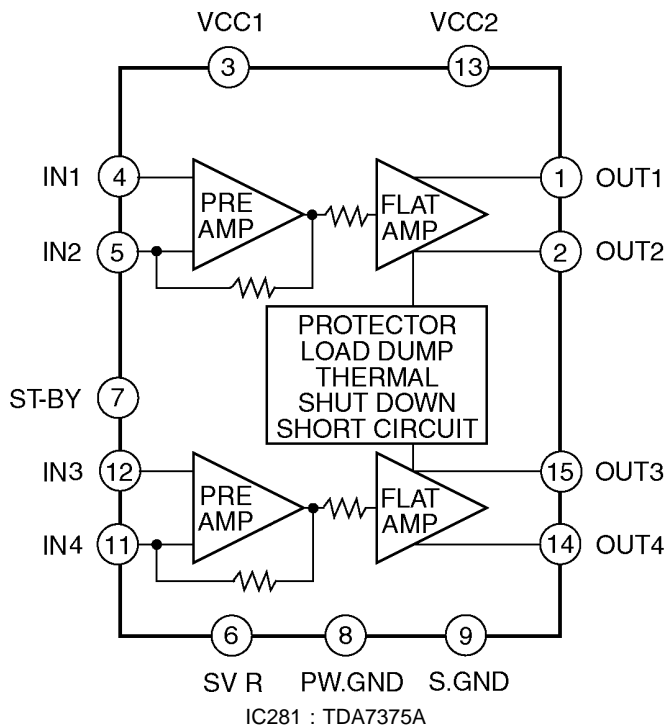
6.3. Display Block

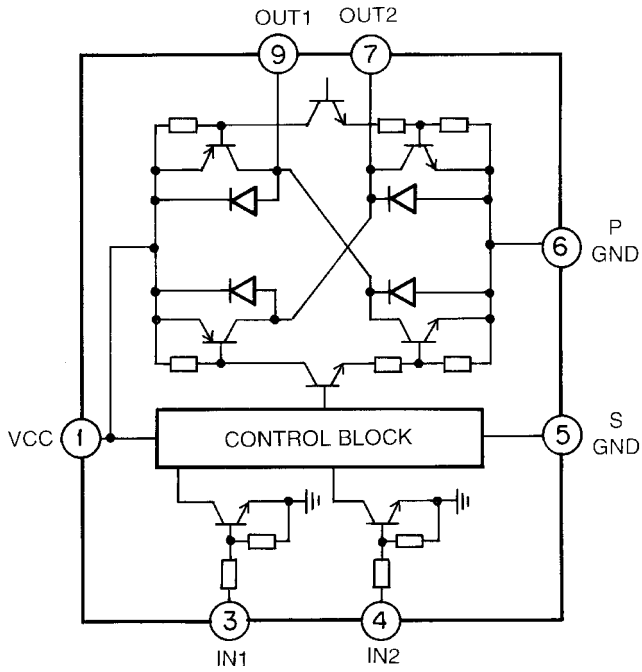


CQ-EA1360L/EA1362L/EA1363L/EA1360LA/EA1362LA/EA1363LA/EA1363LB DISPLAY

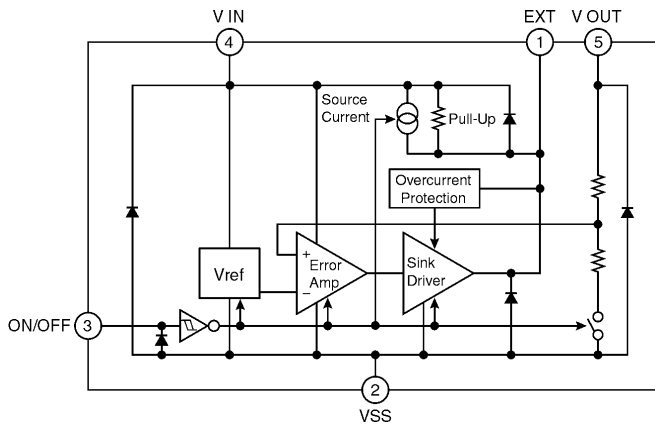
7 IC BLOCK DIAGRAM

7.1. Main Block

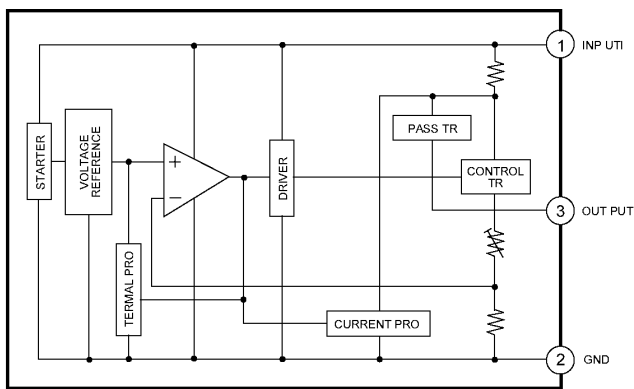




IC710 : YEAMLB1930MT



IC882 : C0DBZH00007



IC884 : L78S09CV

8 REPLACEMENT PARTS LIST

Notes :

1. Be sure to make your orders of replacement parts according to this list.
2. Important safety notice: Components, identified by Δ mark have special characteristics important for safety. When replacing any of these components, use only manufacturer's specified parts.
3. Location keys in the remarks column indicates the general location of the parts shown in the exploded drawing, as in a road map.
4. The marking (RTL) indicates that Retention Time is limited for this item. After the discontinuation of assembly in production, the item will continue to be available for a specific period of time. The retention period of availability is dependent on the type of assembly, and in accordance with the laws governing part and product retention. After the end of this period, the assembly will no longer be available.
5. "A" or "B" marks in remarks column are indicated as follows :
 - A : CQ-EA1360L
 - B : CQ-EA1362L
 - C : CQ-EA1363L
 - D : CQ-EA1360LA
 - E : CQ-EA1362LA
 - F : CQ-EA1363LA
 - G : CQ-EA1363LB

Ref. No.	Part No.	Part Name & Description	Remarks
[MGCAP00023Ja/MGCAP00023Jb] Main/Amp Block			
IC's and TRANSISTORS			
IC101	C0JBAQ000188	IC	
IC108	C0ABBA000022	IC	
IC201	YEAMTA7705FL	IC	
IC210	C0ABCB000058	IC	
IC281	C1EA00000037	IC	
IC401	C0ABBA000022	IC	
IC600	C0JBAZ001652	IC	
IC601,602	C0JBAZ001737	IC	
IC701	MC32C/83	IC	
IC702	C2HBZY000010	IC	
IC703	C1BB00000408	IC	
IC704	C0EBH0000412	IC	
IC705	YEAMS29330AD	IC	
IC707	C1EB00000039	IC	
IC708	YEAMC14584BE	IC	
IC709	YEAM74HC126F	IC	
IC710	YEAMLB1930MT	IC	
IC713	C0EBK0000094	IC	
IC714	H4ZY00000001	IC	
IC715	MN1382JP	IC	
IC717	YEAM7200U33T	IC	
IC881	C1EB00000054	IC	
IC882	C0DBZH000007	IC	
IC883	C0DBAHE00007	IC	
IC884	AN7709F	IC	
IC886	C0DBAHG00014	IC	
IC887	C0CBABH00007	IC	
IC889,890	C0DBZZD00008	IC	
PA101	MGCAU00002C	Electronic Tuner	
Q107	2SB1073TX	Transistor	
Q109	2SB1440TX	Transistor	
Q110	B1GDGFEJ0001	Transistor	

Ref. No.	Part No.	Part Name & Description	Remarks
Q112	B1GBDFJN0001	Transistor	
Q203, 303	B1GBDFJN0001	Transistor	
Q401	B1BBAC000007	Transistor	
Q404	YEANC3518ZT1	Transistor	
Q405	2SD13280VL	Transistor	
Q406,407	B1GBDFJN0001	Transistor	
Q701	B1ABCF000042	Transistor	
Q702	B1GDGFEJ0001	Transistor	
Q705	B1GDCFEN0007	Transistor	
Q706	YEANC3661TA	Transistor	
Q709	B1GBDFJN0001	Transistor	
Q711	B1GBDFJN0001	Transistor	
Q712	B1GDGFEJ0001	Transistor	
Q714	YEANFLF3PT1	Transistor	
Q726	B1GBDFJN0001	Transistor	
Q727	2SB1440TX	Transistor	
Q728	B1GBDFJN0001	Transistor	
Q729	B1GDGFEJ0001	Transistor	
Q730	B1GBDFJN0001	Transistor	
Q885	2SD13280VL	Transistor	
Q886	2SB946	Transistor	
Q888	B1GBDFJN0001	Transistor	
Q889	2SB1440TX	Transistor	
DIODES			
D104	MA157TX	Diode	
D109,110	B0ACCCJ000020	Diode	
D201,202	MAZ816000L	Diode	
D301,302	MAZ816000L	Diode	
D371,372	MAZ830000L	Diode	
D374,375	MAZ830000L	Diode	
D401,402	MA8051MTX	Diode	
D403,404	B0ACCCJ000020	Diode	
D405	MA729TX	Diode	
D406	B0ACCCJ000020	Diode	
D409,410	MAZ33600ML	Diode	
D411	B0ACCCJ000020	Diode	
D709	YEADDEC10DS1	Diode	
D711	MA729TX	Diode	
D713	MA729TX	Diode	
D714	MA8062MTX	Diode	
D723-725	B0ACCCJ000020	Diode	
D727	MA729TX	Diode	
D731-733	B0ACCCJ000020	Diode	
D738	MA151WA	Diode	
D742	MAZ81400ML	Diode	
D744-748	MA8056LMHTX	Diode	
D880	MA8082HTX	Diode	
D881	B0ZAZ0000007	Diode	
D882	B0ACCCJ000020	Diode	
D883	B0JCMD000002	Diode	
D884	B0ECKF000001	Diode	
D886 887	B0ACCCJ000020	Diode	
D888	MAZ81400ML	Diode	
D889	YEADDEC10DS1	Diode	
D890	B0ECLF000001	Diode	
D891	B0ACCCJ000020	Diode	
D892,893	MAZ816000L	Diode	
D894-896	MA8056LMHTX	Diode	
D897	MAZ816000L	Diode	
D898	B0ECLF000001	Diode	
D900,901	MAZ830000L	Diode	
D902-905	YEADDEC10DS1	Diode	
CAPACITORS			
C101	ECALAM471B	470µF 10WV	
C102	YECUS1H103KX	0.01µF 50WV	
C103	YECUS1E223KX	0.022µF 25WV	
C105,106	YECUS1H102KX	1000pF 50WV	
C108	YECUZ1C104KX	0.1µF 16WV	
C109,110	YECUS1H102KX	1000pF 50WV	
C114-116	YECUS1H103KX	0.01µF 50WV	

Ref. No.	Part No.	Part Name & Description	Remarks
C134	ECEV1CA100SR	10µF 16WV	
C135,136	YECUS1H560JM	56pF 50WV	
C138,139	YECUS1H560JM	56pF 50WV	
C174	YECUZ1H102KX	1000pF 50WV	
C175	YECUZ1E223KX	0.022µF 25WV	
C181	YECUS1E104ZF	0.1µF 25WV	
C201,202	ECEA1CKA100I	10µF 16WV	
C203	ECEV1HA2R2SR	2.2µF 50WV	
C210	YECUZ1C104KX	0.1µF 16WV	
C219	ECEV1CA100SR	10µF 16WV	
C221,222	YECUZ1H331JM	330pF 50WV	
C223	F1H1E123A035	0.012µF 25WV	
C224	ECEV0JA470SR	47µF 6.3WV	
C225	YECUS1A105KX	1µF 10WV	
C226	YECUS1E473KX	0.047µF 25WV	
C232,233	YECUS1A105KX	1µF 10WV	
C236-238	YECUS1A105KX	1µF 10WV	
C239	YECUZ1C104KX	0.1µF 16WV	
C246	F1HLA4740004	0.47µF 10WV	
C301	ECEA1CKA100I	10µF 16WV	
C302	ECEA1CKA470I	47µF 16WV	
C303	ECEV1HA2R2SR	2.2µF 50WV	
C309	ECEV1HA010SR	1µF 50WV	
C310	ECEV1CA100SR	10µF 16WV	
C319	YECUS1A105KX	1µF 10WV	
C321,322	YECUZ1H331JM	330pF 50WV	
C323	F1H1E123A035	0.012µF 25WV	
C324	ECEV0JA470SR	47µF 6.3WV	
C325-327	YECUS1A105KX	1µF 10WV	
C332,333	YECUS1A105KX	1µF 10WV	
C346	YECUS1C474KX	0.47µF 10WV	
C373	YECUS1E104ZF	0.1µF 25WV	
C376	ECA1EM471B	470µF 25WV	
C380	ECA1EM471B	470µF 25WV	
C382	ECA1EM471B	470µF 25WV	
C388	F1J0J106A022	10µF 6.3WV	
C389	YECUS1E104ZF	0.1µF 25WV	
C401-403	F1H1H101A231	100µF 50WV	
C404	YECUS1H101JM	100pF 50WV	
C405	F1H1E103A011	0.01µF 25WV	
C407	YECUS1A105KX	1µF 10WV	
C408-410	F1H1H470A231	47µF 50WV	
C414	F1H1H103A190	0.01µF 50WV	
C415	F1H1E103A011	0.01µF 25WV	
C417	YECUS1A105KX	1µF 10WV	
C418	F1H1H101A231	100pF 50WV	
C419	YECUZ1C104KX	0.1µF 16WV	
C420	F1H1H103A190	0.01µF 50WV	
C424	ECA1EM101I	100µF 25WV	
C600	F1H1H103A190	0.01µF 50WV	
C601	F1H1H101A231	100pF 50WV	
C603	YECUS1C104KX	0.1µF 16WV	
C604	F1H1H101A231	100pF 50WV	
C605	YECUZ1C104KX	0.1µF 16WV	
C606	YECUS1C104KX	0.1µF 16WV	
C607-609	YECUZ1C104KX	0.1µF 16WV	
C706,707	YECUS1A105KX	1µF 10WV	
C712	ECEV1CA100SR	10µF 16WV	
C713	YECUZ1C104KX	0.1µF 16WV	
C715	YECUZ1C104KX	0.1µF 16WV	
C716	ECA1EM471B	470µF 25WV	
C717	YECUS1A105KX	1µF 10WV	
C718	ECEA1AKS101I	100µF 10WV	
C719	YECUS1C104KX	0.1µF 16WV	
C724	YECUS1A105KX	1µF 10WV	
C726	F1HLA105A004	1µF 10WV	
C727	F1H1H103A190	0.01µF 50WV	
C728	YECUS1C104KX	0.1µF 16WV	
C729	ECEV1CA100SR	10µF 16WV	
C730	ECEV0JA470SR	47µ 6.3WV	
C731	YECUZ1C104KX	0.1µF 16WV	
C732	ECA1CKA221XI	220µF 16WV	
C733	ECEV1CA100SR	10µF 16WV	
C734	YECUS1C104KX	0.1µF 16WV	

Ref. No.	Part No.	Part Name & Description	Remarks
C735	ECEV0JA470SR	47µF 6.3WV	
C736	YECUS1C104KX	0.1µF 16WV	
C737	ECEV0JA470SR	47µ 6.3WV	
C738	YECUS1C104KX	0.1µF 16WV	
C739	ECEV0JA470SR	47µ 6.3WV	
C740,741	F1J1H332A675	3300pF 50WV	
C742	F1H1H103A190	0.01µF 50WV	
C743	ECEV1CA220SR	22µF 16WV	
C744-748	YECUS1A105KX	1µ 10WV	
C749	YECUZ1C104KX	0.1µF 16WV	
C750	YECUS1A105KX	1µF 10WV	
C751	YECUZ1C104KX	0.1µF 16WV	
C752	ECEV0JA470SR	47µF 6.3WV	
C753	YECUZ1C104KX	0.1µF 16WV	
C754	YECUS1A105KX	1µF 10WV	
C756	ECEV0JA470SR	47µF 6.3WV	
C757,758	F1J1H120A034	12pF 50WV	
C759	ECEV1CA100SR	10µF 16WV	
C762	YECUS1H102KX	1000pF 50WV	
C763	YECUS1A105KX	1µF 10WV	
C764,765	YECUS1H331JM	330pF 50WV	
C770	ECEA0JKA101I	100µF 6.3WV	
C771	YECUZ1C104KX	0.1µF 16WV	
C772	EEAFC0J121H	120µF 6.3WV	
C773	YECUS1E104ZF	0.1µF 25WV	
C775	YECUS1C104KX	0.1µF 16WV	
C783	YECUZ1H102KX	1000pF 50WV	
C785	F1HLA105A004	1µF 10WV	
C786	F1H1H103A190	0.01µF 50WV	
C788	F1H1C473A005	0.047µF 16WV	
C789	YECUS1C224KX	0.22µF 16WV	
C790	YECUS1H102KX	1000pF 50WV	
C791	ECEA0JKA101I	100µF 6.3WV	
C792	YECUZ1C104KX	0.1µF 16WV	
C794	YECUS1C104KX	0.1µF 16WV	
C798	YECUS1C104KX	0.1µF 16WV	
C799	YECUZ1C104KX	0.1µF 16WV	
C802	YECUZ1C104KX	0.1µF 16WV	
C803	YECUS1C104KX	0.1µF 16WV	
C804	YECUZ1C104KX	0.1µF 16WV	
C805	YECUS1A105KX	1µF 10WV	
C806	YECUS1C474KX	0.47µF 16WV	
C807	YECUZ1C104KX	0.1µF 16WV	
C811	ECA1CKA221XI	220µF 16WV	
C813	ECEA1AKS470I	47µF 10WV	
C814	YECUS1H103KX	0.01µF 50WV	
C815	ECEV1HA2R2SR	2.2µF 50WV	
C816,817	YECUV1H221JM	220pF 50WV	
C819	F1H1H103A190	0.01µF 50WV	
C820,821	ECA1CKA221XI	220µF 16WV	
C822	YECUS1C104KX	0.1µF 16WV	
C823,824	YECUS1A105KX	1µF 10WV	
C825	YECUS1E223KX	0.022µF 25WV	
C826	ECEA0JKA101I	100µF 6.3WV	
C827-830	YECUV2A102KX	1000pF 100WV	
C833	F1H1H180A231	18pF 50WV	
C834	F1H1H220A267	22pF 50WV	
C835	YECUS1A105KX	1µF 10WV	
C839-841	YECUV2A103KX	0.01µF 100WV	
C842	F1H1H222A190	2200pF 50WV	
C843	YECUS1H102KX	1000pF 50WV	
C844,845	YECUZ1C104KX	0.1µF 16WV	
C846	ECEV1CA220SR	22µF 16WV	
C847	GRM32RR61E47	4.7µF 25WV	
C848	YECUZ1H332KX	3300pF 50WV	
C849	F1L1A226A020	22µF 10WV	
C851	ECEA1EKA330	33µF 25WV	
C852-855	YECUV1H331JM	330pF 50WV	
C856-858	YECUV1H221JM	220pF 50WV	
C859	ECEA0JKS331I	330µF 6.3WV	
C860	YECUV1H221JM	220pF 50WV	
C861,862	YECUV2A103KX	0.01µF 100WV	
C863-867	YECUV1H221JM	220pF 50WV	
C868	YECUZ1H102KX	1000pF 50WV	

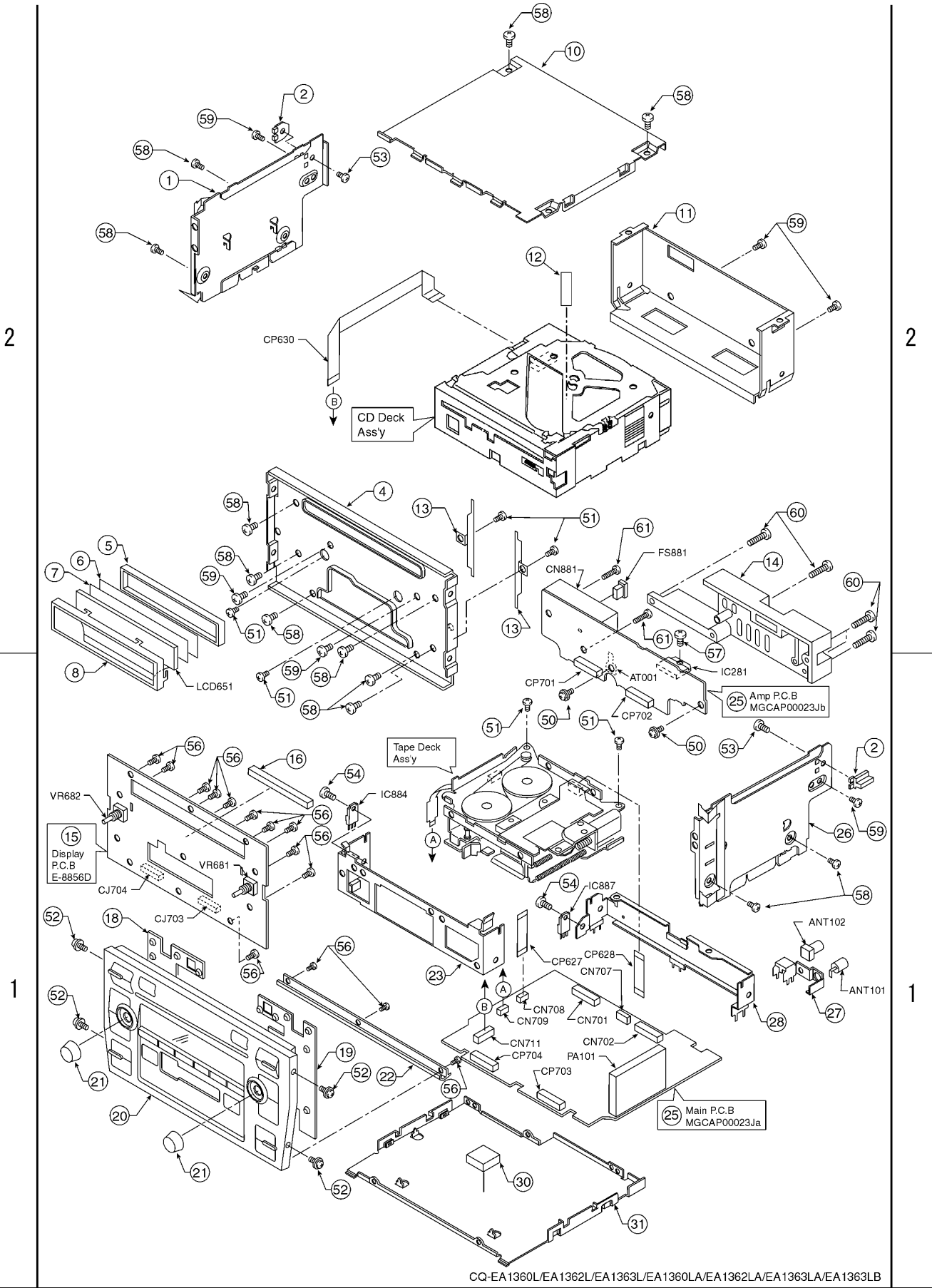
Ref. No.	Part No.	Part Name & Description	Remarks
R793,794	ERJ2GEJ472X	4.7k Ω 1/16W	
R795,796	ERJ2GEJ105X	1M Ω 1/16W	
R799	ERJ2GEJ473X	47k Ω 1/16W	
R800-802	ERJ2GEJ103X	10k Ω 1/16W	
R803,804	ERJ2GEOR00X	0 Ω 1/16W	
R805-807	ERJ2GEJ102X	1k Ω 1/16W	
R808	ERJ6GEYJ103	10k Ω 1/8W	
R812	ERJ2GEOR00X	0 Ω 1/16W	
R813-816	ERJ2GEJ102X	1k Ω 1/16W	
R819-827	ERJ2GEJ102X	1k Ω 1/16W	
R830-839	ERJ2GEJ102X	1k Ω 1/16W	
R841-853	ERJ2GEJ102X	1k Ω 1/16W	
R854	ERJ2RKD224X	220k Ω 1/16W	
R856	ERJ2RHD562X	5.6k Ω 1/16W	
R860,861	ERJ12YJ1R0H	1 Ω 1/2W	
R864	ERJ3GEYJ330V	33 Ω 1/10W	
R866	ERJ6GEYJ473	47k Ω 1/8W	
R867	ERJ12YJ1R0H	1 Ω 1/2W	
R868	ERJ2GEOR00X	0 Ω 1/16W	
R872	ERJ6GEY0R00V	0 Ω 1/8W	
R873	ERJ2GEJ102X	1k Ω 1/16W	
R874	ERJ6ENF4701V	4.7k Ω 1/8W	
R875	ERJ6ENF6801V	6.8k Ω 1/8W	
R876	ERJ3GEYJ5R6V	5.6 Ω 1/10W	
R877	ERJ3GEYJ102V	1k Ω 1/10W	
R880	ERJ8GEYJ102V	1k Ω 1/4W	
R883	ERJ2GEJ223X	22k Ω 1/16W	
R884	ERJ2GEJ102X	1k Ω 1/16W	
R885	ERJ6ENF1002	10k Ω 1/8W	
R886	ERJ6GEYJ202V	2k Ω 1/8W	
R887, 888	ERJ2GEJ102X	1k Ω 1/16W	
R892	ERJ6ENF2702V	27k Ω 1/8W	
R893	ERJ6GEYJ122	1.2k Ω 1/8W	
R894	ERJ6GEYJ124	120k Ω 1/8W	
R895	ERJ8GEYJ102V	1k Ω 1/4W	
R898,899	ERJ8GEYJ102V	1k Ω 1/4W	
R959,960	ERJ6GEY0R00V	0 Ω 1/8W	
R963	ERJ2GEJ473X	47k Ω 1/16W	
R964	ERJ6GEYJ473	47k Ω 1/8W	
R965,966	ERJ2GEJ473X	47k Ω 1/16W	
R967	ERJ6GEY0R00V	0 Ω 1/8W	
R970	ERJ2GEJ473X	47k Ω 1/16W	
R971	ERJ12Y0R00H	0 Ω 1/2W	
R972	ERJ8GEY0R00V	0 Ω 1/4W	
R973	ERJ6GEY0R00V	0 Ω 1/8W	
CONNECTORS			
CN701,702	K1KA18B00029	Connector, 18P	
CN707	YEA5280610	Connector, 10P	
CN708	YEA5280607	Connector, 7P	
CN709	YEA5280605	Connector, 5P	
CN711	K1MN14A00024	Connector, 14P	
CN881	YEA012805	Connector	
CP701,702	K1MQ18A00002	Connector, 18P	
CP703,704	K1KA14B00082	Connector, 14P	
COILS			
L102	G1C102M00003	Coil	
L109,110	J0JCC0000030	Coil	
L111	G1C5R6JA0005	Coil	
L401	G1C101K00018	Coil	
L404	G1A102C00003	Coil	
L405	YELT45N4R7KT	Coil	
L709	J0JCC0000030	Coil	
L713	J0JBC0000012	Coil	
L721	J0JBC0000012	Coil	
L724-729	J0JCC0000030	Coil	
L736	J0JCC0000030	Coil	
L739	J0JBC0000012	Coil	
L748,749	J0JBC0000012	Coil	
L753	J0JCC0000030	Coil	
L754	ERJ3GEY0R00V	Coil	

Ref. No.	Part No.	Part Name & Description	Remarks
L755	J0JCC0000030	Coil	
L790-793	J0JCC0000030	Coil	
L794,795	YELTBML1B601	Coil	
L801	J0JBC0000012	Coil	
L803	G1C4R7M00022	Coil	
L822	G1C4R7M00022	Coil	
L881	YETQ014T162	Coil	
L882	G1A150H00004	Coil	
L883	YELTBML2B222	Coil	
L885-889	G1C101K00018	Coil	
CRYSTALS			
XL701	YEXLMC60327	Crystal	
XL700	H2B1605A0006	Crystal	
XL702	H0D855400002	Crystal	
NEON TUBE			
Z101	YEAL02012T	Neon tube	
THERMISTORS			
R870	D4ZZ00000027	Thermistor	
FILTERS			
CS881	YECCL55S222T	Filter	
CS883	F1L1H2040003	Filter	
CS885	FLJ1C474A093	Filter	
CS886	F1L1H2040003	Filter	
[E8856D] Display Block			
IC's and TRANSISTORS			
Q631,632	YEANCL14YKX	Transistor	
Q633,634	B1GDGFEJ0001	Transistor	
Q636	YEANCL14YKX	Transistor	
Q639	YEANSFH320T	Transistor	
Q640	BLABCF000044	Transistor	
Q651	YEAN2SK536TB	Transistor	
DIODES			
D501-523	YEADLST676T	Diode	
D525-548	YEADLST676Q2	Diode	
D549-552	B0ACCK000005	Diode	
D553-556	YEADLST676Q2	Diode	
D557-562	YEADLST676T	Diode	
D563,564	YEADLST676Q2	Diode	
D565-568	B0ACCK000005	Diode	
D569	YEADLST676T	Diode	
D651	B0ACCK000005	Diode	
D652	MA8056LMHTX	Diode	
D702-707	B0ACCK000005	Diode	
CAPACITORS			
C651	YECUS1C105ZF	1 μ F 16WV	
C652	YECUS1H103KX	0.01 μ F 50WV	
C658-662	YECUS1C224KX	0.22 μ F 16WV	
C664	ECSH1CX335CR	3.3 μ F 16WV	
C666	ECSH1CX335CR	3.3 μ F 16WV	
C668	YECUS1C334KX	0.33 μ F 16WV	
RESISTORS			
R631-637	ERJ8GEYJ392V	3.9k Ω 1/8W	
R639	ERJ8GEYJ122V	1.2k Ω 1/8W	
R640-649	ERJ8GEYJ102V	1k Ω 1/8W	
R651	ERJ6GEYJ474	470k Ω 1/10W	
R652	ERJ6GEYJ473	47k Ω 1/10W	
R654	ERJ6GEYJ473	47k Ω 1/10W	

Ref. No.	Part No.	Part Name & Description	Remarks
R656	ERJ6GEYJ564	560k Ω 1/10W	
R657	ERJ6GEYJ105	1M Ω 1/10W	
R658	ERJ6GEYJ334	330k Ω 1/10W	
R659	ERJ6GEYJ824	820k Ω 1/10W	
R660,661	ERJ8GEYJ102V	1k Ω 1/8W	
R662-668	ERJ8GEYJ392V	3.9k Ω 1/8W	
R671-677	ERJ8GEYJ102V	1k Ω 1/8W	
R678-682	ERJ8GEYJ102V	1k Ω 1/8W	
R683	ERJ6GEYJ105	1M Ω 1/10W	
R684	ERJ6GEYJ103	10k Ω 1/10W	
R685	ERJ6GEYJ104	100k Ω 1/10W	
R691,692	ERJ8GEYJ392V	3.9k Ω 1/8W	
R693	ERJ6GEYR00V	0 Ω 1/10W	
CONNECTORS			
CJ703,704	K1KB14A00042	Connector, 14P	
SWITCHES			
SW631-633	K0H1BA000412	Switch	
SW637-640	K0H1BA000412	Switch	
SW643-647	K0H1BA000412	Switch	
SW649-653	K0H1BA000412	Switch	
SW655-659	K0H1BA000412	Switch	
LCD			
LCD651	L5DAAMD00001	LCD	
COIL			
L651	J0JCC0000012	Coil	
VARIABLE RESISTORS			
VR681	EVQBT206615B	Variable Resistor	
VR682	EVQBT106515B	Variable Resistor	
THERMISTOR			
TH651	D4CC21040005	Thermistor	
Mechanical Parts			
MISCELLANEOUS			
FS881	K5Y103200001	Fuse, 10A	△
ANT101	YEAA10087	Antenna Receptacle	
ANT102	K1ZZ00001151	Antenna Receptacle	
AT001	YEAT03435	GND Terminal	
CP627	MGCAB00009	Flat Cable,10P	
CP628	MGCAB00010	Flat Cable,14P	
CP630	MGCAB00067	Flat Cable	
1	MGCFZ00005A	Side Plate(L)Ass'y	
2	MGCFZ00003	Installation Guide	
4	MGCFA00075A	Front Plate	
5	YEFK06919A	LCD Holder	
6	MGCFV00011	Sheet	
7	MGCFV00010	Sheet	
8	MGCFX00011	LCD Case	
10	MGCFA00029E	Upper Cover	
11	MGCFX00071	Bracket, Deck	
12	YEFM031083	Laser Seal	
13	MGCFX00012	Spring	A,B,D,E,G
14	MGCFZ00002G	Heat Sink	
15	YEP0PT8856W0	Display PCB w/Component	RTL
16	MGCFS00024	Pad	
18	YEFR07125B	Rubber Cushion (L)	
19	YEFR07129B	Rubber Cushion (R)	
20	MGCFC00087B	Escutcheon Ass'y	A
20	MGCFC00088E	Escutcheon Ass'y	B
20	MGCFC00067E	Escutcheon Ass'y	C

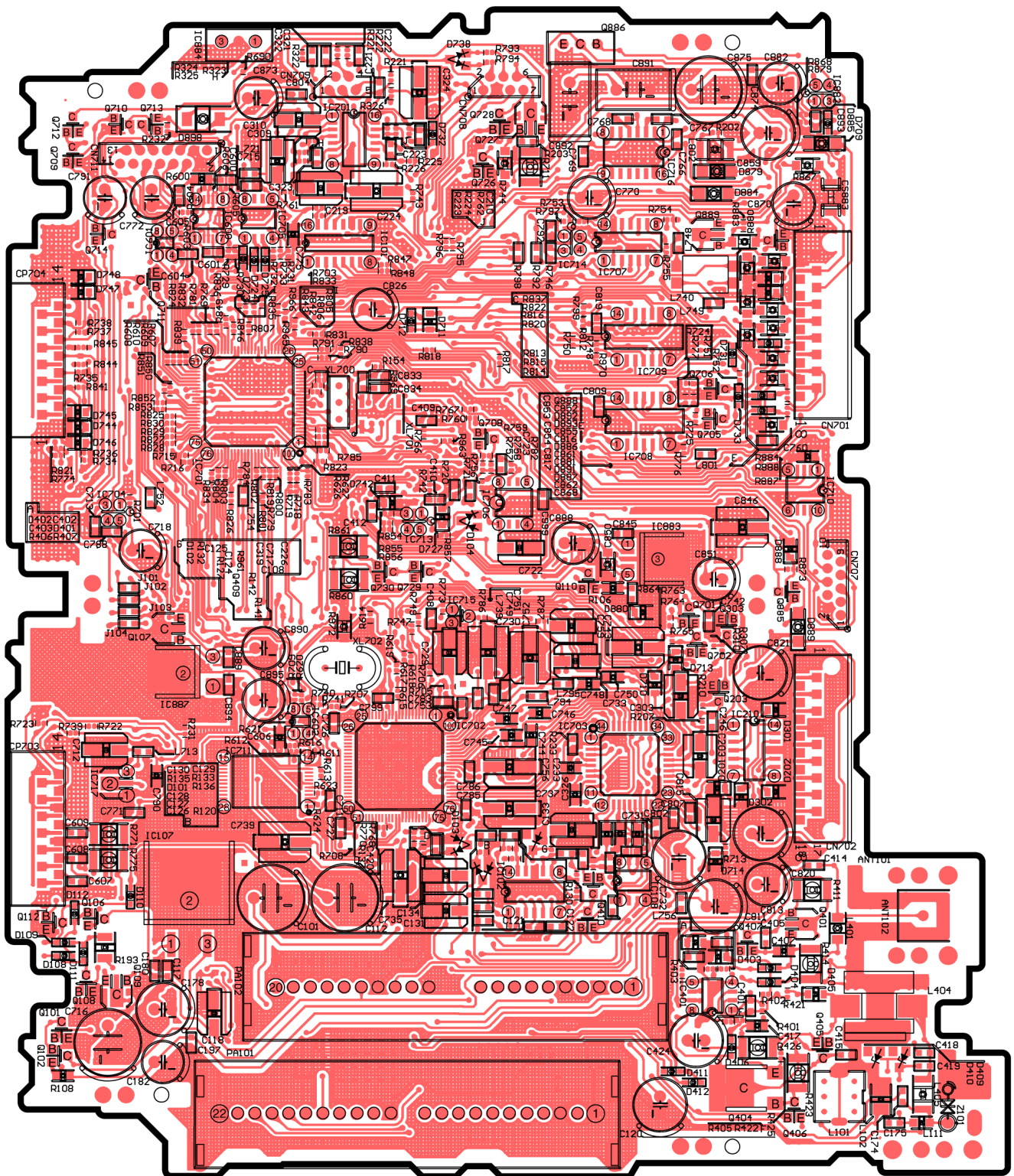
Ref. No.	Part No.	Part Name & Description	Remarks
20	MGCFC00070B	Escutcheon Ass'y	D
20	MGCFC00073B	Escutcheon Ass'y	E
20	MGCFC00086E	Escutcheon Ass'y	F
20	MGCFC00032N	Escutcheon Ass'y	G
21	MGCFE00004C	Knob	
22	MGCFX00004	Panel	A,D
23	MGCFX00008A	Bracket, Deck (F)	
25	YEP0PT0023Y0	Main, Amp PCB w/Component	RTL
26	MGCFZ00004A	Side Plate(R)Ass'y	
27	MGCFX00014	Bracket, ANT	
28	MGCFX00009	Bracket, Deck (R)	
30	YEFK011772	Pad	
31	MGCFA00030E	Bottom Cover	
50	YEJT03120	Tapping Screw M3x8mm	
51	YEJT03131	Tapping Screw M2.6x5mm	
52	YEJT03007	Screw M3x5mm	
53	XSB26+4FX	Screw M2.6x4mm	
54	YEJS06017	Screw	
56	XTB2+6GFX	Tapping Screw M2x6mm	
57	XTB3+8JFX	Tapping Screw M3x8mm	
58	XTB3+6FFX	Tapping Screw M3x6mm	
59	XTB3+5FFX	Screw M3x5mm	
60	XTB3+8FFX	Tapping Screw M3x8mm	
61	XYN26+C8FX	Tapping Screw M2.6x1.0mm	

9 EXPLODED VIEW (Unit)



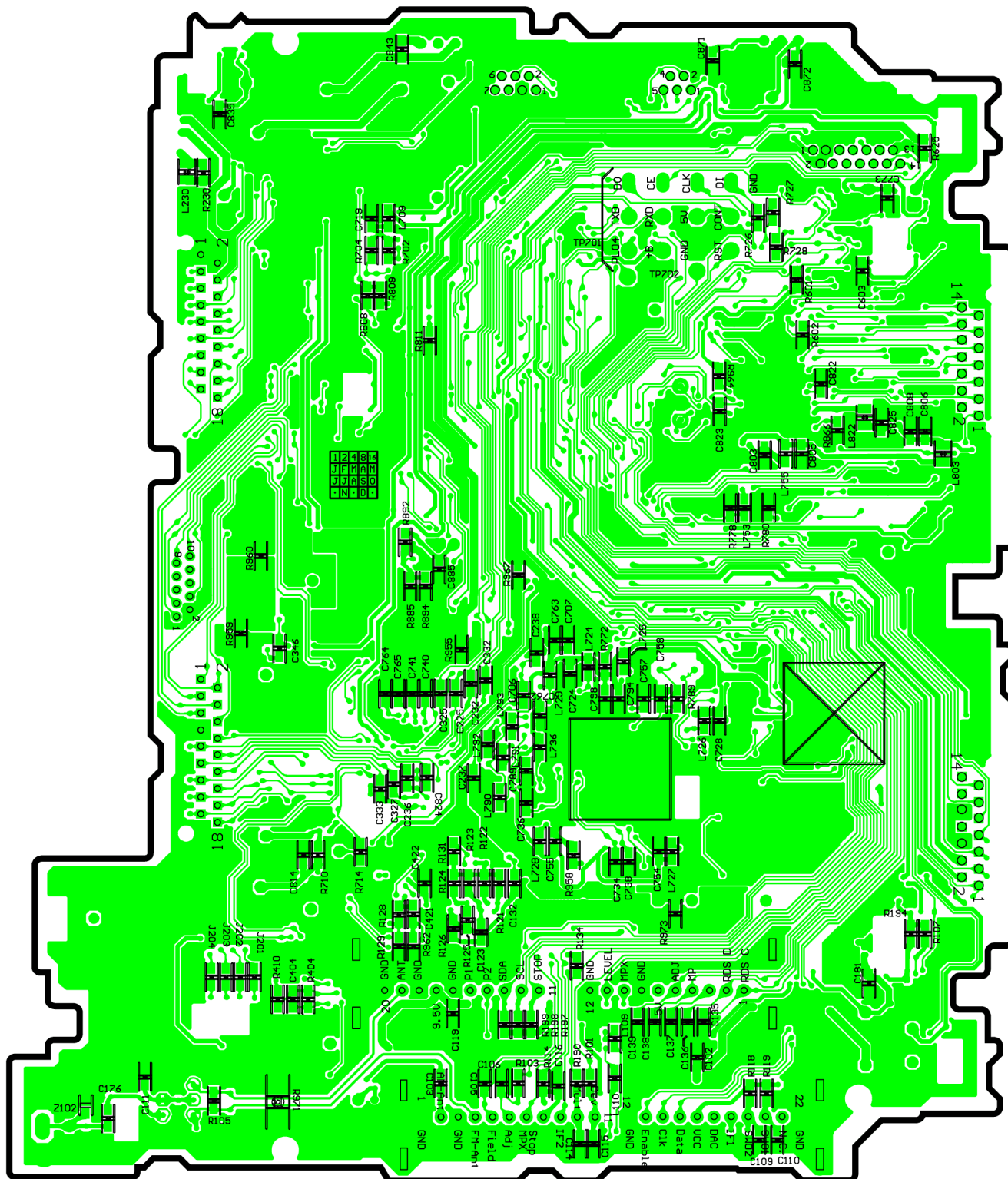
CQ-EA1360L/EA1362L/EA1363L/EA1360LA/EA1362LA/EA1363LA/EA1363LB

10.2. Main Block (Top View)



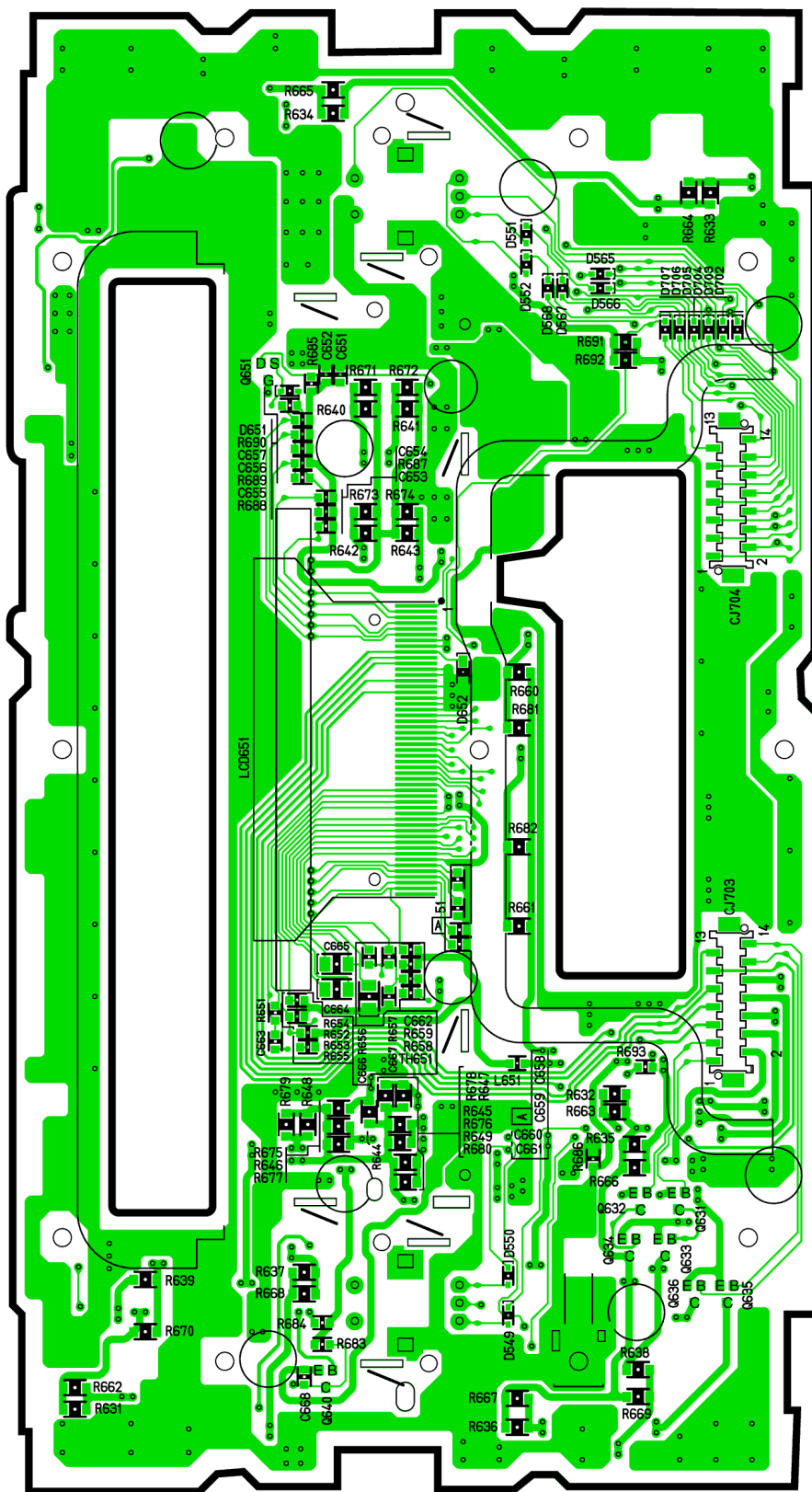
[MGCAP00023Ja] [Top View]

10.3. Main Block (Bottom View)



[MGCAP00023Ja] [Bottom View]

10.5. Display Block (Bottom View)



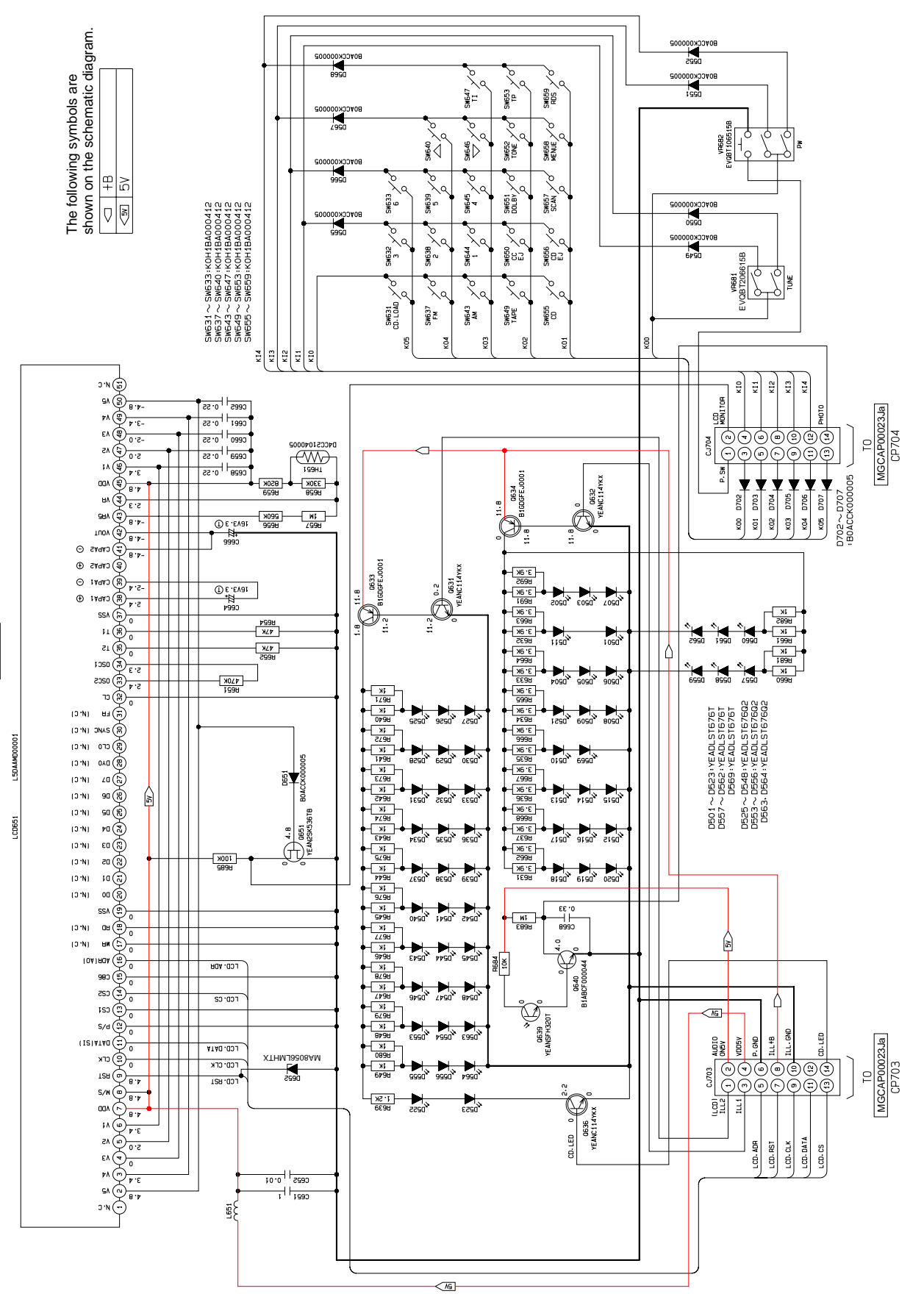
[E-8856D][Bottom View]

CQ-EA1360L/EA1362L/EA1363L/EA1360LA/EA1362LA/EA1363LA/EA1363LB DISPLAY P.C.B

11 SCHEMATIC DIAGRAM-1

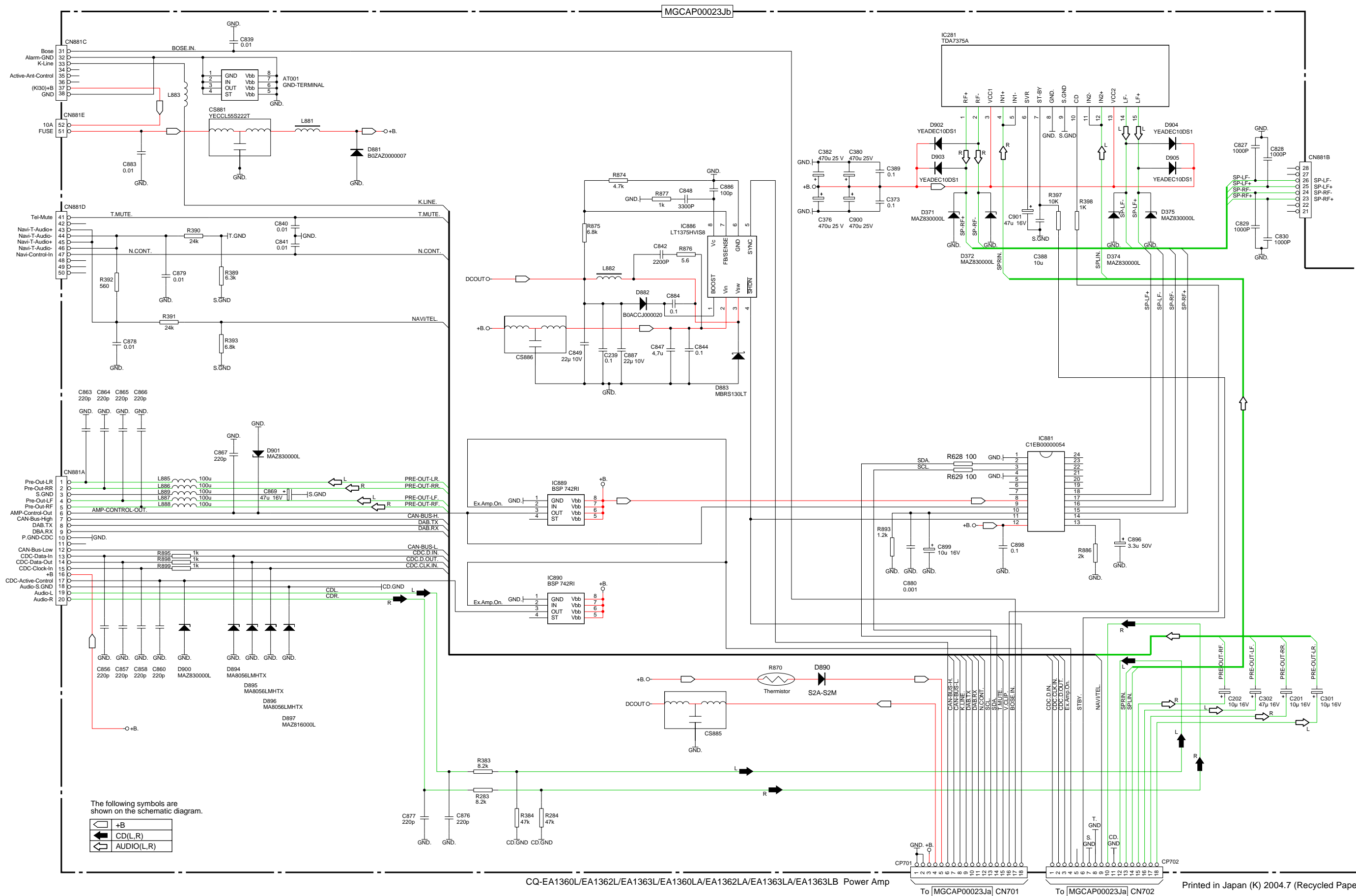
11.1. Display Block

The following symbols are shown on the schematic diagram.



CQ-EA1360L/E/A1362L/E/A1363L/E/A1360LA/E/A1362LA/E/A1363LA/E/A1363LB ESC

12.2. Amp Block



YGFD04729

'04. 6. 25

CONTENTS

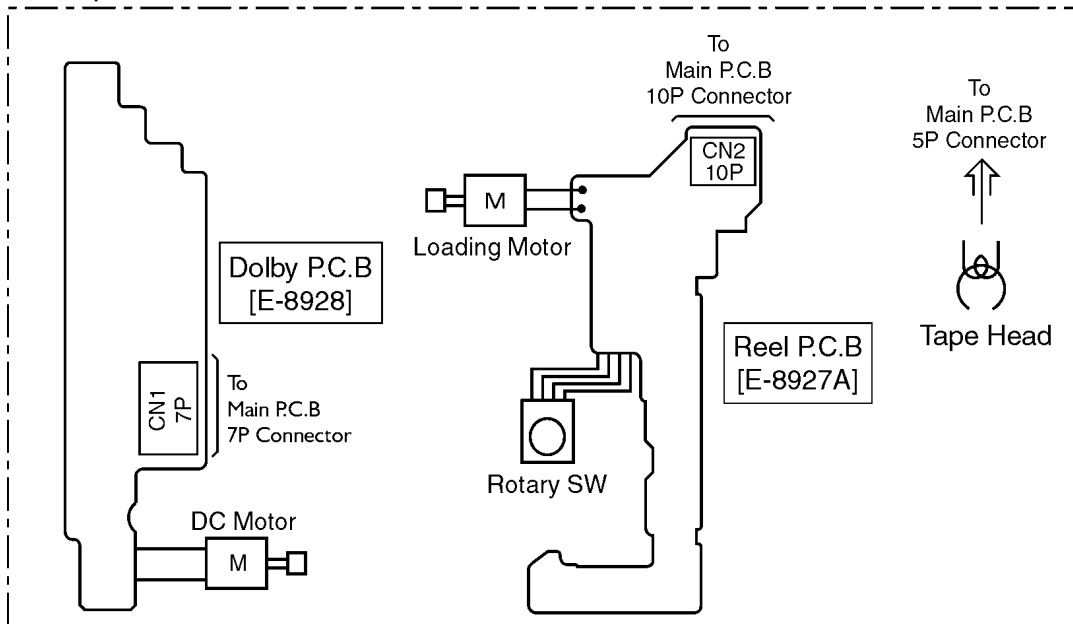
	Page		Page
1 FEATUERS	2	5 EXPLODED VIEW (Tape Deck)	4
2 WIRING CONNECTION (Tape Deck)	2	6 WIRING DIAGRAM	5
3 BLOCK DIAGRAM (Tape Deck)	2	7 SCHEMATIC DIAGRAM	6
4 TAPE PLAYER PARTS	3		

1 FEATUERS

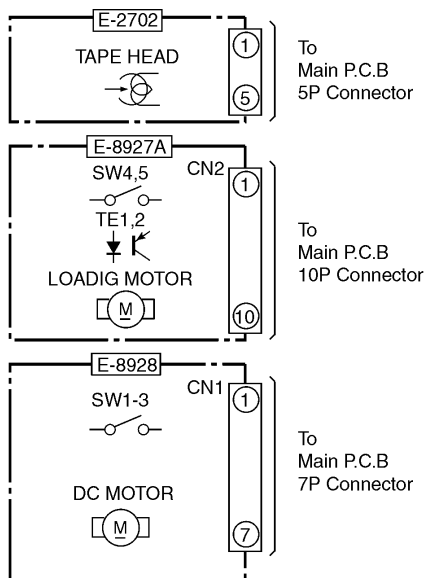
- The specifications are based on the main unit.

2 WIRING CONNECTION (Tape Deck)

■ Tape Deck



3 BLOCK DIAGRAM (Tape Deck)

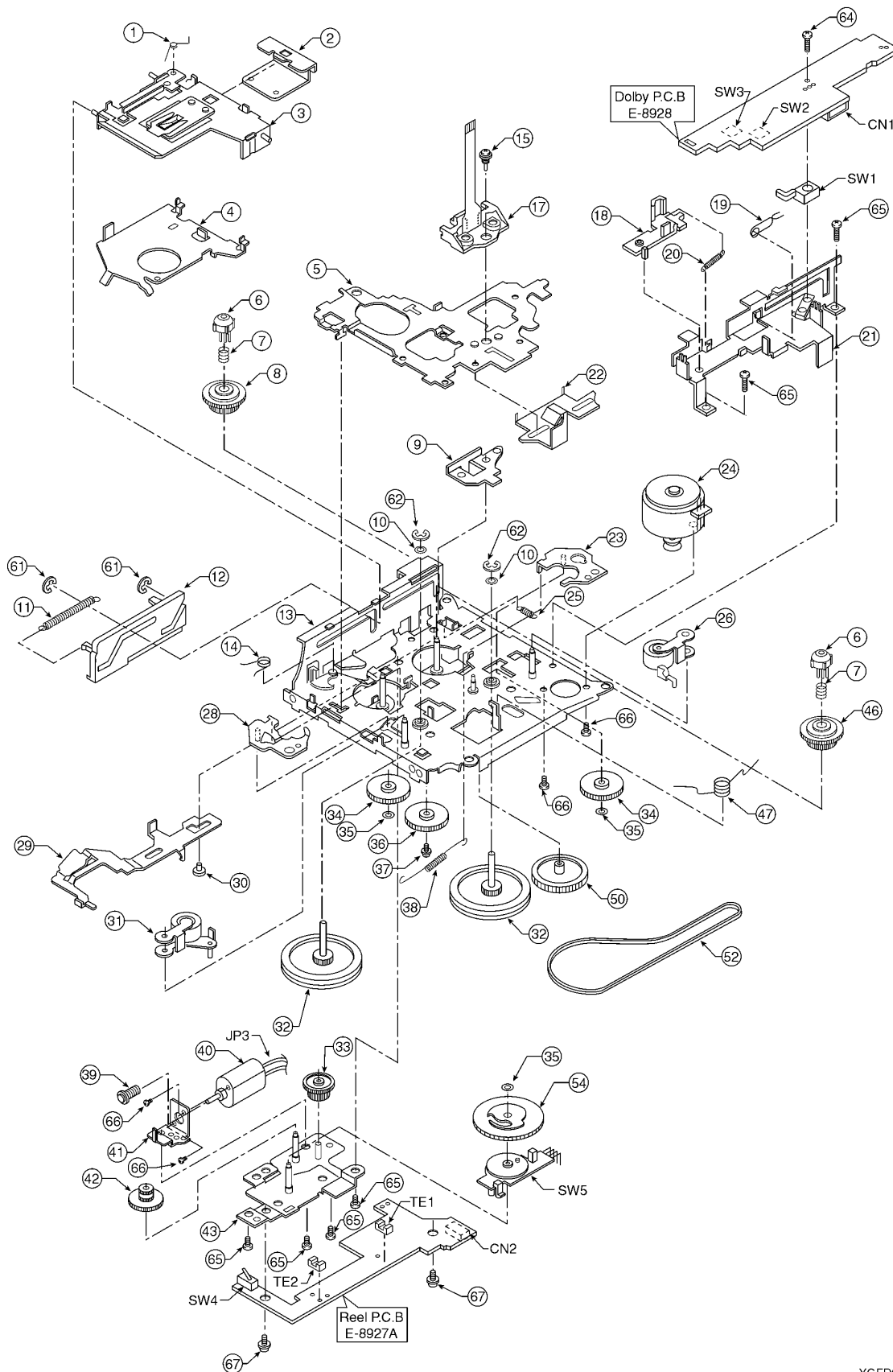


4 TAPE PLAYER PARTS

Ref. No.	Part No.	Part Name & Description	Remarks
[E8927A] Tape Reel Block			
TRANSISTORS			
TE1	CNA1312K01MC	Photo Transistor	
TE2	CNA1312K01MC	Photo Transistor	
RESISTORS			
J1	ERJ8GEY0R00V	Chip, 0Ω 1/8W	
J2	ERJ8GEY0R00V	Chip, 0Ω 1/8W	
J3	ERJ8GEY0R00V	Chip, 0Ω 1/8W	
J4	ERJ8GEY0R00V	Chip, 0Ω 1/8W	
J5	ERJ8GEY0R00V	Chip, 0Ω 1/8W	
J6	ERJ8GEY0R00V	Chip, 0Ω 1/8W	
J7	ERJ8GEY0R00V	Chip, 0Ω 1/8W	
J8	ERJ8GEY0R00V	Chip, 0Ω 1/8W	
R1	ERJ8GEYJ683V	Chip, 68kΩ 1/8W	
R2	ERJ8GEYJ683V	Chip, 68kΩ 1/8W	
R3	ERJ8GEYJ472V	Chip, 4.7kΩ 1/8W	
R4	ERJ8GEYJ472V	Chip, 4.7kΩ 1/8W	
R5	ERJ8GEYJ472V	Chip, 4.7kΩ 1/8W	
R6	ERJ8GEYJ472V	Chip, 4.7kΩ 1/8W	
R7	ERJ8GEYJ821V	Chip, 820Ω 1/8W	
R8	ERJ8GEYJ821V	Chip, 820Ω 1/8W	
CONNECTOR			
CN2	YEAE012406	Connector, 10P	
JP3	YGAJ071387A	Lead Wire	
SWITCHES			
SW4	K0F111B00047	Switch	
SW5	K0G131E00001	Rotary Switch	
[E8928] SW Block			
DIODE			
D1	BOEANM000002	Diode	
CAPACITOR			
C1	FLK1E334A022	Ceramic, 0.33μF 25WV	
RESISTOR			
R2	ERDS2TJ472	Carbon, 4.7kΩ 1/4W	
CONNECTOR			
CN1	YEAE012405	Connector, 7P	
SWITCHES			
SW1	K0J1CB000003	Leaf Switch	
SW2	YEAS07174	Switch	
SW3	YEAS08042	Switch	
Mechanical Parts			
MISCELLANEOUS			
1	YGFX0052472	Lock Plate Spring	
2	YGFX0052454	Spring	
3	YGFX0462100	Cassette Holder (U) Ass'y	
4	YGFX0462104	Cassette Holder(L)	
5	YGFA011830	Head Chassis Ass'y	
6	YGFX234194	Cam	
7	YGFX0052427	Back Tension Spring	
8	YGFX209273	Reel (R) Ass'y	
9	YGFX0052471	Holding Spring	

Ref. No.	Part No.	Part Name & Description	Remarks
10	YGJW04131	Washer	
11	YGFX0052475	Lack Plate Spring	
12	YGFX0031035	Lack Plate	
13	YGFA011827	Main Chassis Ass'y	
14	YGFX0052444	EQ Lever Spring	
17	YGP9FZ2993	Head Ass'y	
18	YGFX0462105	Lever	
19	YGFX0052478	Vibration-proof Spring	
20	YGFX0052477	Spring	
21	YGFX239480	Cassette Guid Plate	
22	YGFX0462097	PRO Change Plate	
23	YGFX0031031	Idler Gear Plate (F) Ass'y	
24	YGPOFX3845	Main Motor Ass'y	
25	YGFX0052474	Lack Return Spring	
26	YGFX218305	Pinch Roller (F) Ass'y	
28	YGFX0031033	Idler Gear Plate (R) Ass'y	
29	YGFX0462102	Lack Return Link	
30	YGF062600	Lack Return Link Shaft	
31	YGFX218306	Pinch Roller (R) Ass'y	
32	YGFX213213	Flywheel Ass'y	
33	YGFX0031001	Drive Gear (2)	
34	YGFX0031004A	Lack Return Gear	
35	YGFX014075	Lock Ling	
36	YGFX003970	Gear	
37	YGJT03250	Gear Shaft	
38	YGFX0052446	Idler Gear Plate Spring	
39	YGFX0031030	Worm Gear	
40	YGPOFX3846	Loading Motor Ass'y	
41	YGFX030102	Worm Gear Stopper	
42	YGFX0031026	Drive Gear (3)	
43	YGFA011851	Drive Chassis Ass'y	
46	YGFX209272	Reel (F) Ass'y	
47	YGFX0052473	Pinch Roller Spring	
50	YGFX003971	PRO Change Gear	
52	YEF03083	Belt	
54	YGFX0031029	Drive Gear	
61	YEJE01004	E-Ring	
62	YEJE01036	E-Ring	
63	YGF062546	Screw	
64	XYN2+C8FX	Screw, 2 x 8mm	
65	YEJT03167	Screw,	
66	YEJS06097A	Screw, 2 x 2.5mm	
67	YGJT03271	Screw,	

5 EXPLODED VIEW (Tape Deck)



2

2

1

1

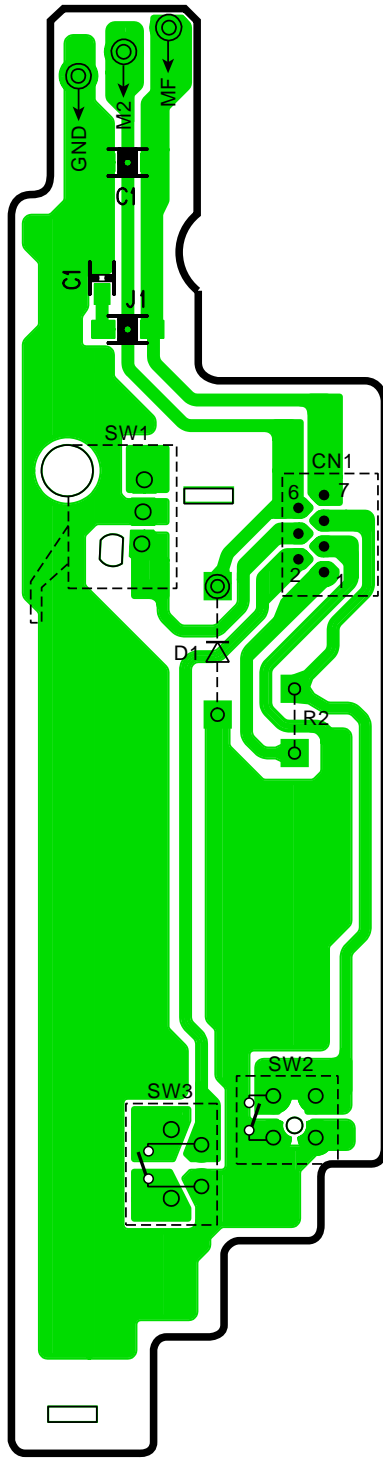
A

B

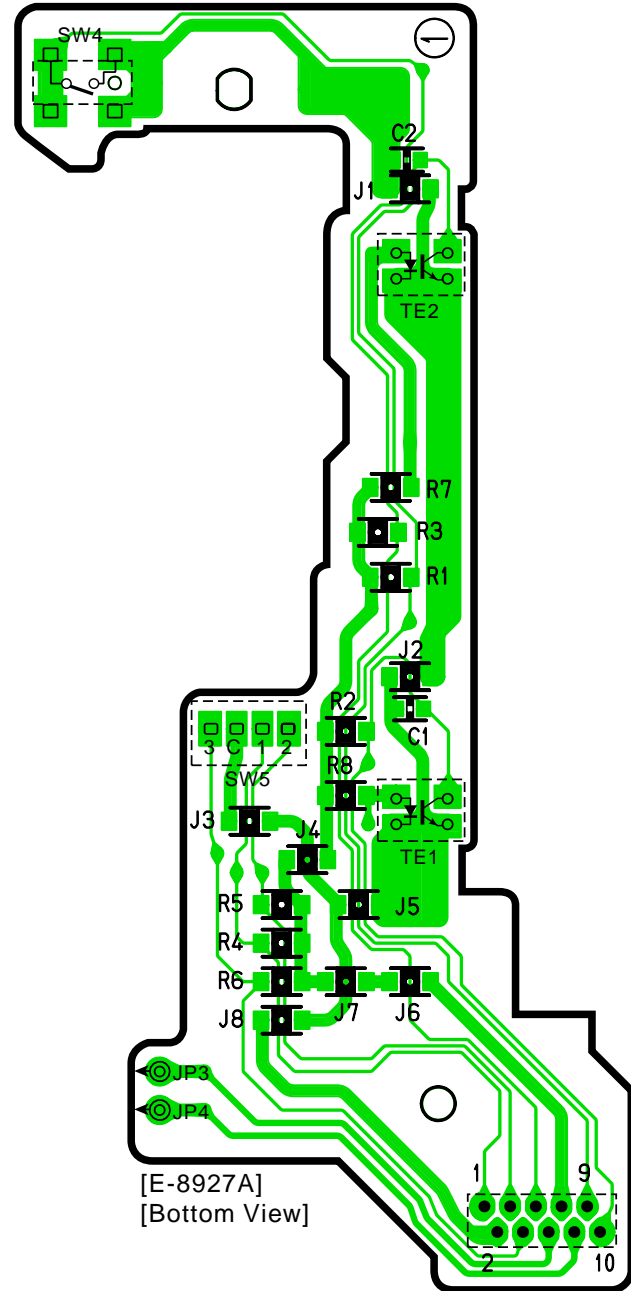
YGFD04729
'04. 6.25

6 WIRING DIAGRAM

6.1. Tape Block



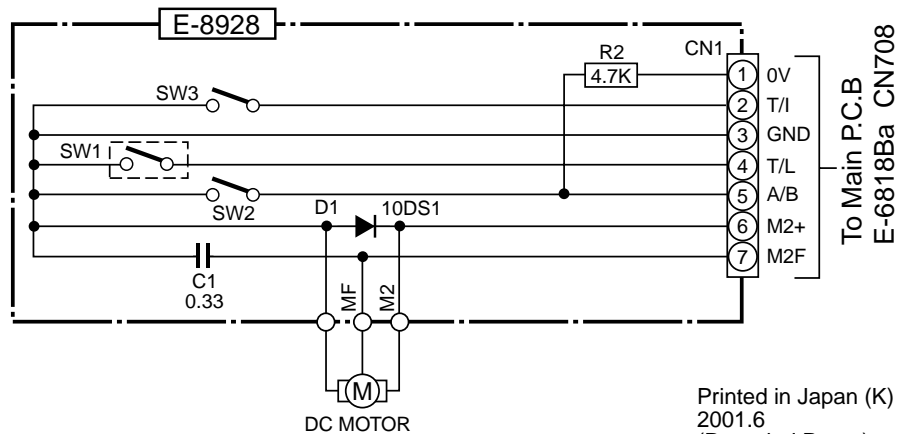
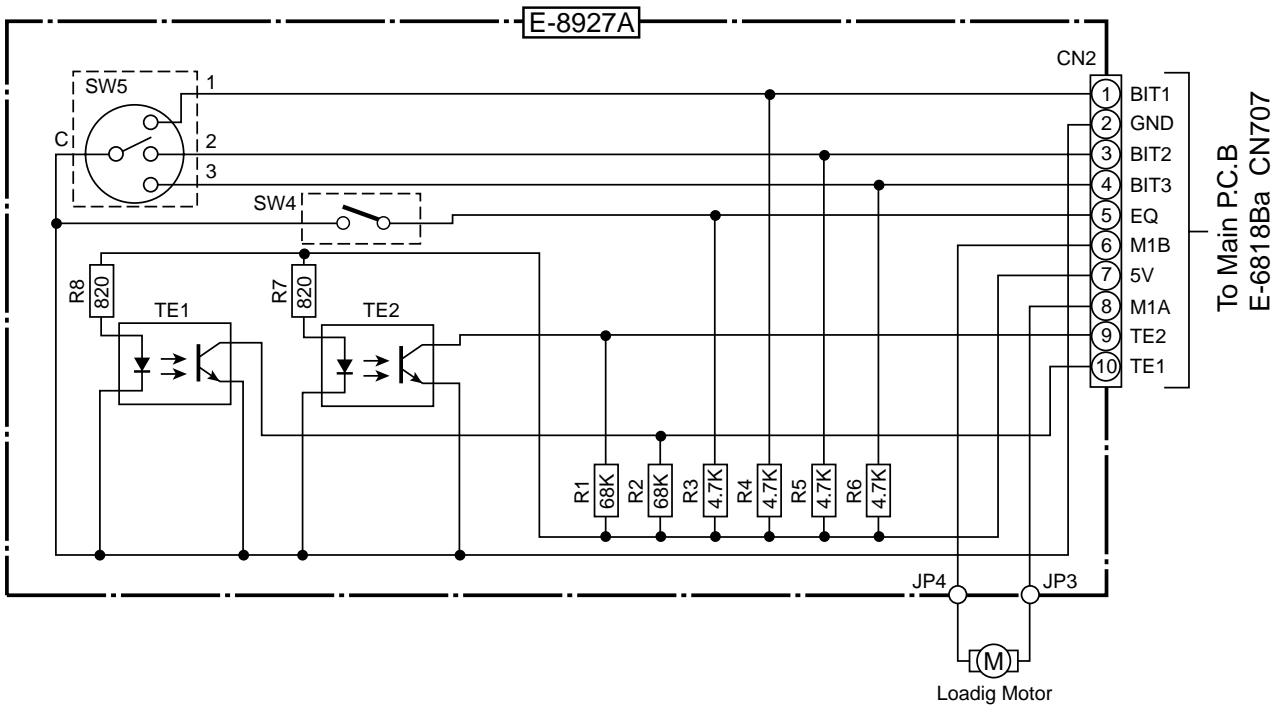
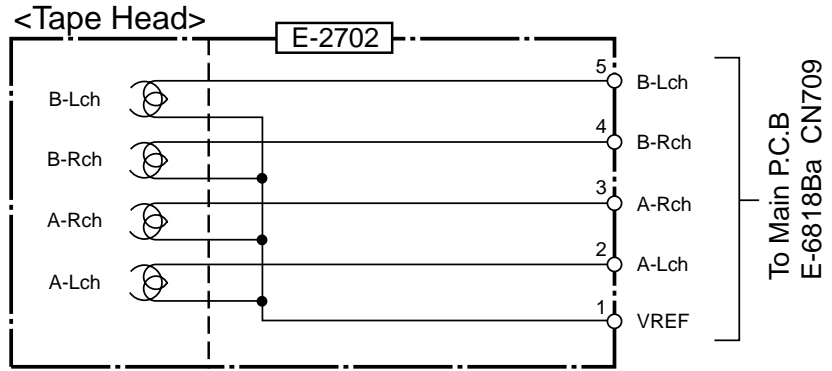
[E-8928]
[Bottom View]



[E-8927A]
[Bottom View]

7 SCHEMATIC DIAGRAM

7.1. Tape Block



Printed in Japan (K)
 2001.6
 (Recycled Paper)

YGFD13192

'04.9.2

CONTENTS

	Page		Page
1 FEATURES	2	7 CD CHANGER PARTS LIST	6
2 LASER PRODUCTS	2	8 EXPLODED VIEW (CD Deck-1)	9
3 WIRING CONNECTIONS (CD Deck)	2	9 EXPLODED VIEW (CD Deck-2)	10
4 BLOCK DIAGRAM (CD Deck)	3	10 EXPLODED VIEW (CD Deck-3)	11
5 TERMINALS DESCRIPTION (CD Deck)	4	11 WIRING DIAGRAM	12
6 IC BLOCK DIAGRAM (CD Deck)	5	12 SCHEMATIC DIAGRAM (CD Deck)	15

1 FEATURES

- The specifications are based on the main unit.

2 LASER PRODUCTS

Do not take apart this unit or attempt to make any changes yourself.

This unit is very intricate that uses a laser pickup to retrieve information from the surface of compact discs. The laser is carefully shielded so that its rays remain inside the cabinet. Therefore, never try to disassemble the player or alter any of its parts since you may be exposed to laser rays and dangerous voltages.

Laser products :

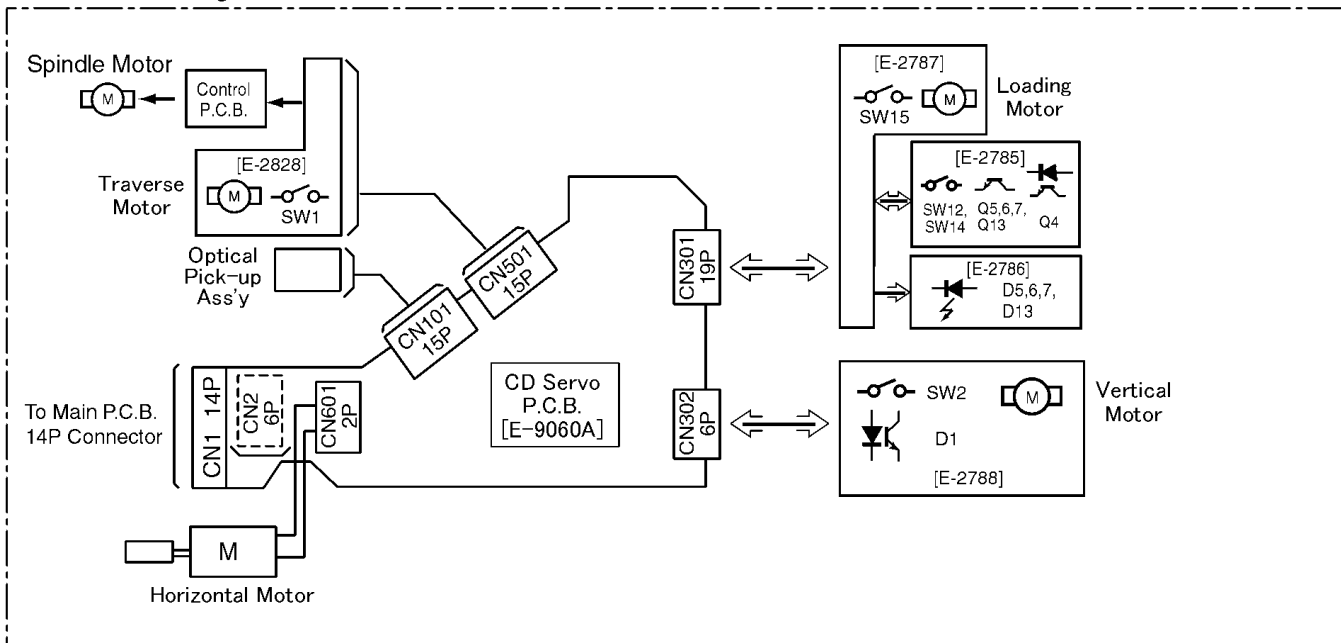
Wave length	780nm
Laser power	No hazardous radiation is emitted with safety protection.

Caution

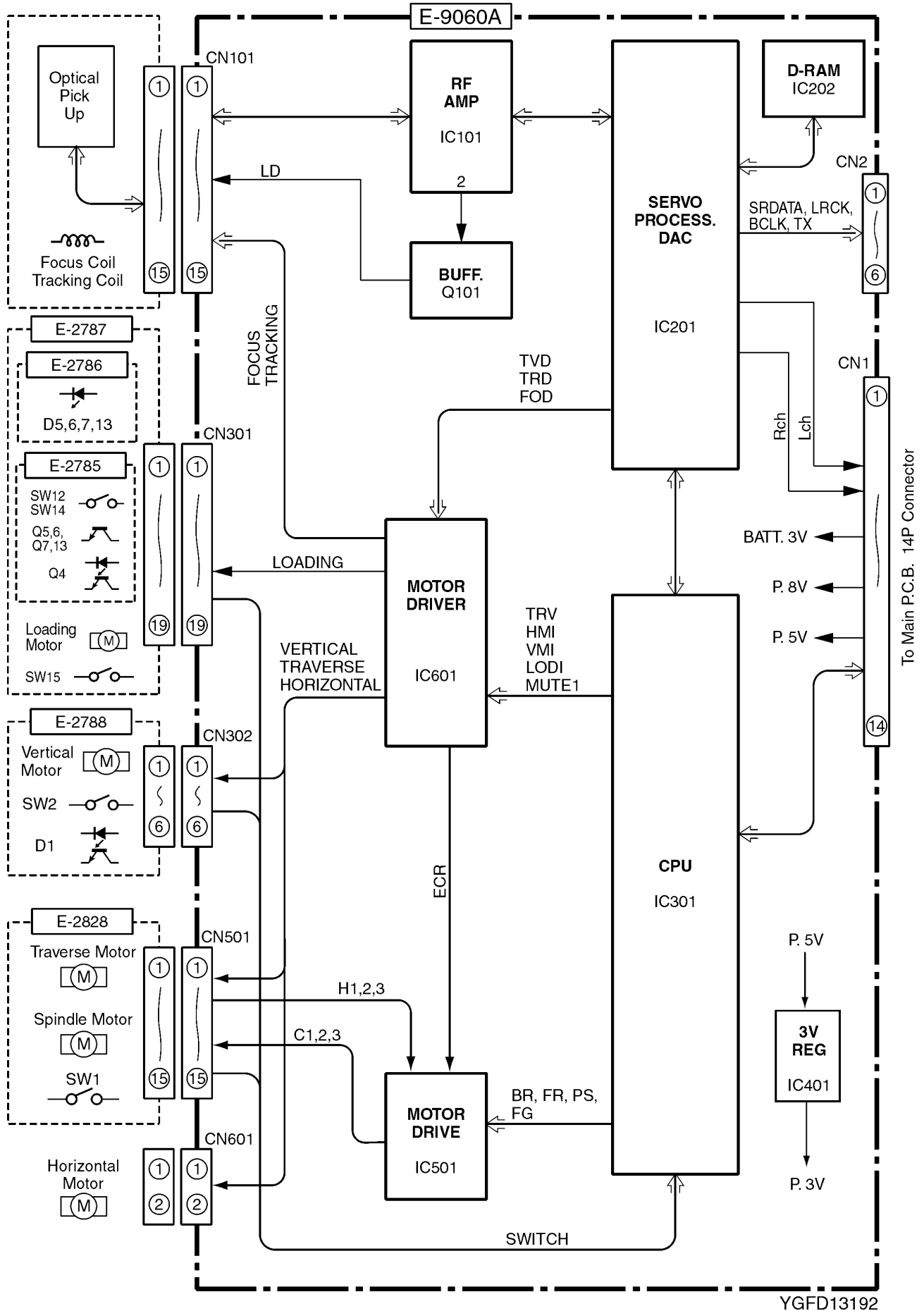
This product utilizes a laser. Use of controls or adjustments or performance of procedures other than those specified herein may result in hazardous radiation exposure.

3 WIRING CONNECTIONS (CD Deck)

CD In-Dash Changer Block



4 BLOCK DIAGRAM (CD Deck)



YGFD13192

5 TERMINALS DESCRIPTION (CD Deck)

IC201 : MN662785TBUC

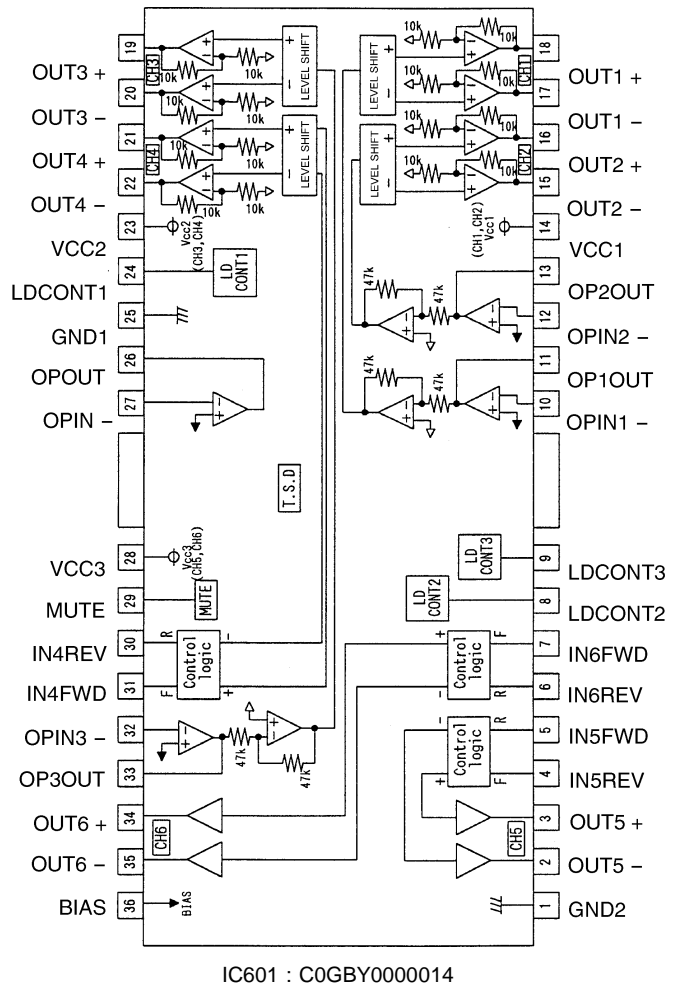
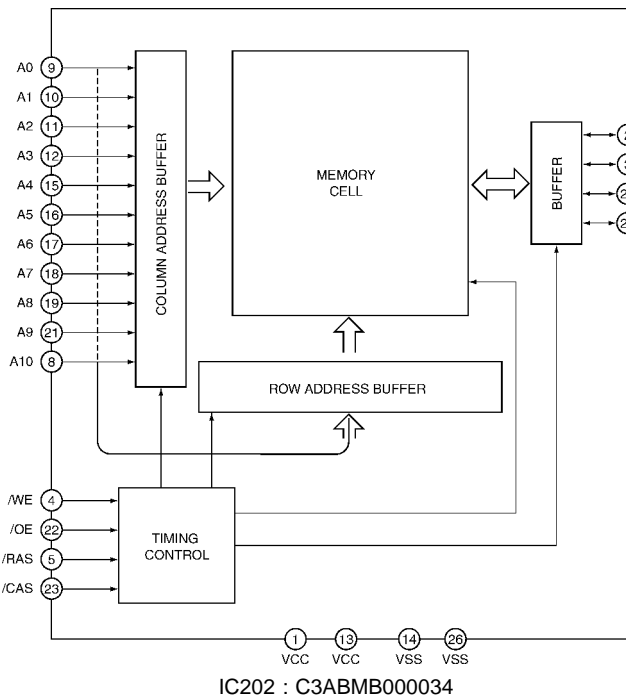
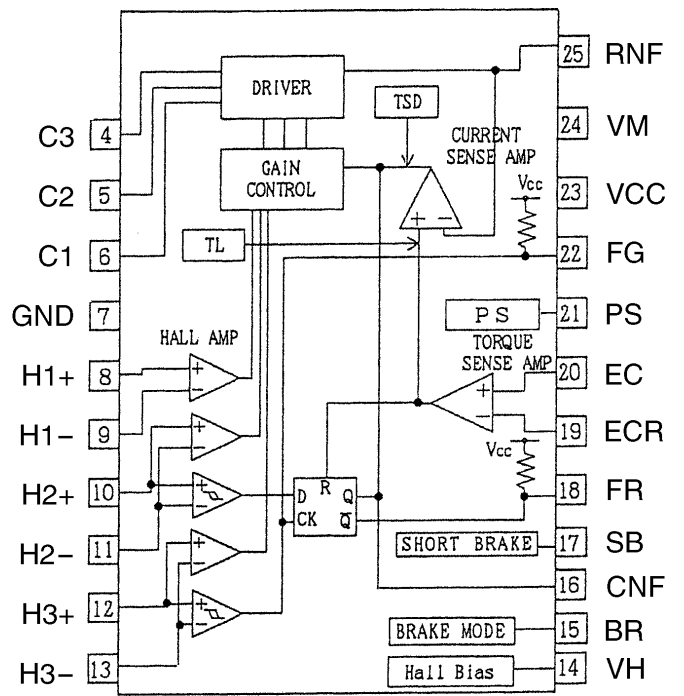
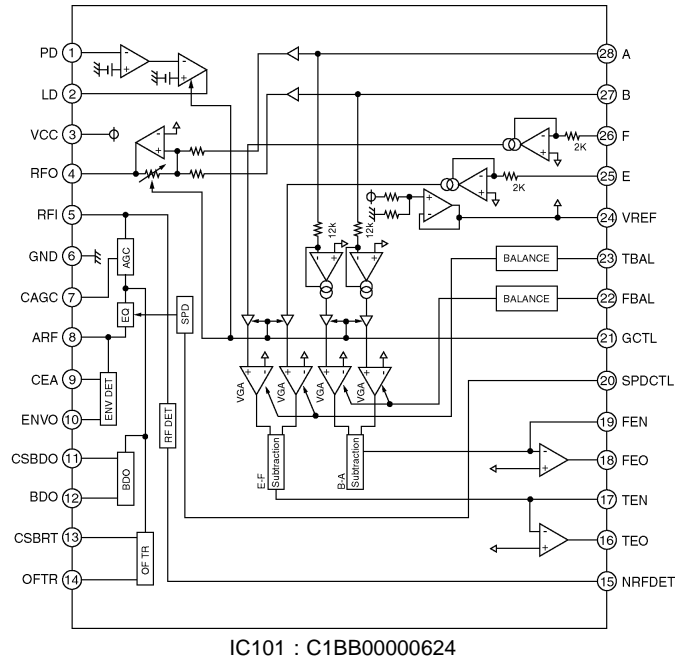
Pin No.	Port	Descriptions	I/O	Vol (V)
1	DVDD3	+5V power supply	-	3.6
2	D0	D-RAM data	I/O	2.0
3	D1	D-RAM data	I/O	2.0
4	NWE	D-RAM data write	O	3.0
5	NRAS	D-RAM row address strobe	O	3.2
6	D2	D-RAM data	I/O	2.1
7	D3	D-RAM data	I/O	1.9
8	NCAS0	D-RAM column address strobe	O	2.8
9	NCAS1	D-RAM column address strobe	O	1.4
10	A8	D-RAM address	O	1.0
11-14	A7-4	D-RAM address	O	1.1
15	A9	D-RAM address	O	1.1
16-18	A0-A2	D-RAM address	O	1.1
19	A3	D-RAM address	O	1.1
20	DVSS2	Ground	-	0
21	DVDD2	+5V power supply	-	3.6
22	SPOUT	Not used	-	1.5
23	TRVP	Traverse motor control	O	1.9
24	TRVM	Traverse motor control	O	1.9
25	TRP	Tracking coil drive	O	1.9
26	TRM	Tracking coil drive	O	1.9
27	FDP	Focus coil drive	O	2.0
28	FDM	Focus coil drive	O	2.0
29	FBAL	Focus balance	O	1.9
30	TBAL	Tracking balance	O	1.9
31	CSEL	(Connecting to VDD)	-	3.6
32	FE	Focus error	I	2.0
33	TE	Tracking error	I	1.9
34	RFENV	RF envelope	I	1.9
35	OFT	Off track signal	I	0
36	NRFDET	RF detecting signal	I	0
37	BDO	Drop-out signal	I	0
38	LDON	Laser on signal	O	3.6
39	ARF	RF signal	I	1.9
40	IREF	Reference current input	I	1.2
41	ADPVCC	(Connecting to ground)	-	0
42	DSLFL	Loop filter for DSL	-	2.0
43	DRFL	Loop filter for DSL	-	2.2
44	PLLF	Loop filter for PLL	-	1.3
45	VCOF	VCO filter	-	1.3
46	AVDD2	+5V power supply	-	3.6
47	AVSS2	Ground	-	0
48	OUTL	L channel output	O	1.8
49	AVSS1	Ground	-	0
50	OUTR	R channel output	O	1.8
51	AVDD1	+5V power supply	-	3.5
52	FSEL	(Connecting to P3V)	-	3.7
53,54	-	(Connecting to ground)	-	0
55	FLAG	Flag output	O	0
56	CLVS	Servo status signal	O	3.6
57-60	-	Not used	-	-
61	MCLK	Clock for I/F command	I	2.4
62	MDATA	Data for I/F command	I	1.9
63	MLD	I/F command load	I	3.5
64	BLKCK	Subcode block clock	O	0
65	SQCK	Ext. clock for sub code-Q	I	3.5
66	SUBQ	Code for sub. code-Q	O	1.1
67	DMUTE	Mute input	I	0
68	STAT	Status signal	O	1.1
69	NRST	Reset input	I	3.6
70	SPPOL	Not used	-	-
71	PMCK	Clock output	O	2.0
72	SMCK	Clock output	O	1.9
73	SDATA	Serial data	O	0
74	LRCK	LR clock	O	0
75	BCLK	Bit clock	O	0
76	/TEST	(Connecting to VDD)	-	1.5
77	X1	Crystal oscillator	-	1.8
78	X2	Crystal oscillator	-	1.8

Pin No.	Port	Descriptions	I/O	Vol (V)
79	DVDD1	+5V power supply	-	3.6
80	DVSS1	Ground	-	0

IC301 : C2BBGF000364

Pin No.	Port	Descriptions	I/O	Vol (V)
1	PS	Motor power save	O	3.5
2	BR	Brake mode selection	O	0
3	GCTL	Motor G-control	O	1.6
4	SPCCTL	Motor speed control	O	3.5
5	-	Not used	-	-
6	MCLK	Clock for I/F command	O	2.9
7	MDATA	Data for I/F command	O	1.9
8	MLD	I/F command load	O	3.5
9	VSS0	Ground	-	0
10	VDD0	+3V power supply	-	3.5
11	STAT	Status signal	I	1.2
12	FLOCK	Focus servo lock	O	0
13	TLOCK	Tracking servo lock	O	0
14	SENS	Servo status	O	0
15	SIM	CD changerserial data	I	3.1
16	SOM	CD changerserial data	O	2.2
17	SCKM	Serial data shift clock	I	3.2
18	SUBQ	Code for sub. code-Q	I	1.7
19	-	Not used	-	-
20	SQCK	Ext. clock for sub. code-Q	O	3.6
21	NRST	Reset output	O	3.6
22	DMUTE	Mute output	O	0
23	MUTE	Mute output	O	0
24	VDD1	+3V power supply	-	3.5
25	AVSS1	Ground	-	0
26	SW15	Feeder SW	I	3.6
27	SW3	Tray H SW	I	3.5
28	SW4	Disc push SW	I	0.5
29	SW5	Disc SW	I	0
30	SW6	Disc load SW	I	0
31	SW7	Eject SW	I	0
32	SW13	Eject2 SW	I	0
33	CLVS	Servo status	O	3.6
34	AVREF	+3V power supply	-	3.6
35	-	Not used	-	-
36	/RESET	Reset	I	3.6
37	XT2	Not used	-	-
38	XT1	(VDD pull-up)	-	3.6
39	IC(VPP)	(Connecting to ground)	-	0
40	X2	Crystal Oscillator	-	2.1
41	X1	Crystal Oscillator	-	1.8
42	VSS1	Ground	-	0
43	CDON	CD changer start/stop	I	3.1
44	BLKCK	Sub. code block clock	I	0
45	FG	Flag signal	I	1.9
46	BDO	Drop-out signal	I	0
47	FR	Revolution detection	I	0
48	TRV	Forced traverse control	O	1.9
49	PWM	Not used	-	-
50	VMI+	Horizontal motor control	O	0
51	VMI-	Horizontal motor control	O	0
52	MUTE1	Mute output	O	3.6
53	LODI+	Loading motor control	O	0
54	LODI-	Loading motor control	O	0
55	HMI+	Vertical motor control	O	0
56	HMI-	Vertical motor control	O	0
57	SW1	Inner SW	I	3.6
58	SW2	TrayG SW	I	0
59	SW8	Play SW	I	0
60	SW9	Clump SW	I	3.6
61	SW10	Shuter SW	I	3.6
62	SW11	Horizontal origin SW	I	3.6
63	SW12	Outer2 SW	I	3.7
64	SW14	Outer SW	I	3.6

6 IC BLOCK DIAGRAM (CD Deck)



7 CD CHANGER PARTS LIST

Ref. No.	Part No.	Part Name & Description	Remarks
[E9060A] CD Servo Block			
IC's and TRANSISTORS			
IC101	C1BB00000624	IC	
IC201	MN662785TBUC	IC	
IC202	C3ABMB000034	IC	
IC301	C2BBGF000364	IC	
IC401	C0DBZGE00002	IC	
IC501	C0GBH0000006	IC	
IC601	C0GBY0000014	IC	
Q101	2SB766ATX	Transistor	
DIODE			
D301	MA152WKTX	Diode	
CAPACITORS			
C1	EEVFC0J102P	Electrolytic, 1000µF 6.3WV	
C101	YECUZ1C104KX	Ceramic, 0.1µF 16WV	
C102	YECUZ1C104KX	Ceramic, 0.1µF 16WV	
C103	F3H0J1070005	Tantalum, 100µF 6.3WV	
C104	YECUZ1C104KX	Ceramic, 0.1µF 16WV	
C105	YECUZ1C104KX	Ceramic, 0.1µF 16WV	
C106	FIH1H8210002	Ceramic, 820PF 50WV	
C107	YECUZ1C104KX	Ceramic, 0.1µF 16WV	
C108	FIH1H682A190	Ceramic, 6800PF 50WV	
C109	FIH1H222A190	Ceramic, 2200PF 50WV	
C110	FLK0J1060015	Ceramic, 10 µF 6.3WV	
C111	FIH1H1010005	Ceramic, 100PF 50WV	
C112	FIH1E103A011	Ceramic, 0.01µF 25WV	
C113	FIH1E103A011	Ceramic, 0.01µF 25WV	
C114	FIH1H2710006	Ceramic, 270PF 50WV	
C115	FIH1H6810005	Ceramic, 680PF 50WV	
C116	YECUZ1C104KX	Ceramic, 0.1µF 16WV	
C117	FLK0J1060015	Ceramic, 10 µF 6.3WV	
C201	YECUZ1C104KX	Ceramic, 0.1µF 16WV	
C202	FIH1E123A011	Ceramic, 0.012µF 25WV	
C203	YECUZ1A224KX	Ceramic, 0.22µF 10WV	
C205	FIH1A4740004	Ceramic, 0.47µF 10WV	
C206	FLK0J1060015	Ceramic, 10 µF 6.3WV	
C208	EEVFC0J102P	Electrolytic, 1000µF 6.3WV	
C209	FLK0J1060015	Ceramic, 10 µF 6.3WV	
C210	FIH0J1050010	Ceramic, 1µF 6.3WV	
C211	FIH0J1050010	Ceramic, 1µF 6.3WV	
C301	FLK0J1060015	Ceramic, 10 µF 6.3WV	
C302	FIH1E103A011	Ceramic, 0.01µF 25WV	
C312	YECUZ1C104KX	Ceramic, 0.1µF 16WV	
C313	YECUZ1C104KX	Ceramic, 0.1µF 16WV	
C315	YECUZ1C104KX	Ceramic, 0.1µF 16WV	
C401	FIH0J1050010	Ceramic, 1µF 6.3WV	
C402	FLK0J1060015	Ceramic, 10 µF 6.3WV	
C501	YECUZ1C104KX	Ceramic, 0.1µF 16WV	
C502	YECUZ1C104KX	Ceramic, 0.1µF 16WV	
C503	YECUZ1C104KX	Ceramic, 0.1µF 16WV	
C504	YECUZ1C104KX	Ceramic, 0.1µF 16WV	
C601	FIH1H8210002	Ceramic, 820PF 50WV	
C602	FIH1H8210002	Ceramic, 820PF 50WV	
C603	FIH0J1050010	Ceramic, 1µF 6.3WV	
C604	YECUZ1C333KX	Ceramic, 0.033µF 16WV	
C605	YECUZ1C104KX	Ceramic, 0.1µF 16WV	
C606	YECUZ1C104KX	Ceramic, 0.1µF 16WV	
C607	ECEV1CA470SP	Electrolytic, 47µF 16WV	
C608	FLK0J1060015	Ceramic, 10 µF 6.3WV	

Ref. No.	Part No.	Part Name & Description	Remarks
RESISTORS			
R1	ERJ3GEYJ334V	Chip, 330kΩ 1/16W	
R2	ERJ3GEYJ102V	Chip, 1kΩ 1/16W	
R3	ERJ3GEYJ102V	Chip, 1kΩ 1/16W	
R101	ERJ6GEYJ1R0V	Chip, 1.0Ω 1/10W	
R102	ERJ3GEY0R00V	Chip, 0Ω 1/16W	
R103	ERJ3GEY0R00V	Chip, 0Ω 1/16W	
R104	ERJ3GEYJ152V	Chip, 1.5kΩ 1/16W	
R105	ERJ3GEYJ152V	Chip, 1.5kΩ 1/16W	
R106	ERJ3GEYJ563V	Chip, 56kΩ 1/16W	
R107	ERJ3GEYJ223V	Chip, 22kΩ 1/16W	
R108	ERJ3GEYJ333V	Chip, 33kΩ 1/16W	
R109	ERJ3GEYJ473V	Chip, 47kΩ 1/16W	
R110	ERJ3GEYJ102V	Chip, 1kΩ 1/16W	
R111	ERJ3GEYJ102V	Chip, 1kΩ 1/16W	
R201	ERJ3GEYJ823V	Chip, 82kΩ 1/16W	
R202	ERJ3GEYJ473V	Chip, 47kΩ 1/16W	
R203	ERJ3GEYJ473V	Chip, 47kΩ 1/16W	
R204	ERJ3GEYJ271V	Chip, 270Ω 1/16W	
R205	ERJ3GEYJ222V	Chip, 2.2kΩ 1/16W	
R206	ERJ3GEYJ330V	Chip, 33Ω 1/16W	
R207	ERJ3GEYJ102V	Chip, 1kΩ 1/16W	
R208	ERJ3GEYJ102V	Chip, 1kΩ 1/16W	
R209	ERJ3GEYJ102V	Chip, 1kΩ 1/16W	
R210	ERJ3GEYJ102V	Chip, 1kΩ 1/16W	
R211	ERJ3GEYJ332V	Chip, 3.3kΩ 1/16W	
R212	ERJ3GEYJ332V	Chip, 3.3kΩ 1/16W	
R213	ERJ3GEYJ105V	Chip, 1MΩ 1/16W	
R214	ERJ3GEYJ151V	Chip, 150Ω 1/16W	
R301	ERJ3GEYJ563V	Chip, 56kΩ 1/16W	
R302	ERJ3GEYJ563V	Chip, 56kΩ 1/16W	
R303	ERJ3GEYJ332V	Chip, 3.3kΩ 1/16W	
R304	ERJ3GEYJ332V	Chip, 3.3kΩ 1/16W	
R305	ERJ3GEYJ563V	Chip, 56kΩ 1/16W	
R306	ERJ3GEYJ563V	Chip, 56kΩ 1/16W	
R307	ERJ3GEYJ683V	Chip, 68kΩ 1/16W	
R308	ERJ3GEYJ683V	Chip, 68kΩ 1/16W	
R309	ERJ3GEYJ683V	Chip, 68kΩ 1/16W	
R310	ERJ3GEYJ332V	Chip, 3.3kΩ 1/16W	
R311	ERJ3GEYJ332V	Chip, 3.3kΩ 1/16W	
R312	ERJ3GEYJ332V	Chip, 3.3kΩ 1/16W	
R313	ERJ3GEYJ332V	Chip, 3.3kΩ 1/16W	
R314	ERJ3GEYJ332V	Chip, 3.3kΩ 1/16W	
R315	ERJ3GEYJ683V	Chip, 68kΩ 1/16W	
R316	ERJ3GEYJ332V	Chip, 3.3kΩ 1/16W	
R317	ERJ3GEYJ221V	Chip, 220Ω 1/16W	
R318	ERJ3GEYJ221V	Chip, 220Ω 1/16W	
R319	ERJ3GEYJ221V	Chip, 220Ω 1/16W	
R320	ERJ3GEYJ221V	Chip, 220Ω 1/16W	
R321	ERJ3GEYJ221V	Chip, 220Ω 1/16W	
R322	ERJ3GEYJ221V	Chip, 220Ω 1/16W	
R323	ERJ3GEYJ332V	Chip, 3.3kΩ 1/16W	
R324	ERJ3GEYJ332V	Chip, 3.3kΩ 1/16W	
R325	ERJ3GEYJ332V	Chip, 3.3kΩ 1/16W	
R326	ERJ3GEYJ473V	Chip, 47kΩ 1/16W	
R327	ERJ3GEY0R00V	Chip, 0Ω 1/16W	
R330	ERJ3GEYJ332V	Chip, 3.3kΩ 1/16W	
R501	ERJ3GEYJ121V	Chip, 120Ω 1/16W	
R502	ERJ8GEYJ1R0V	Chip, 1.0Ω 1/8W	
R503	ERJ3GEYJ121V	Chip, 120Ω 1/16W	
R504	ERJ3GEYJ183V	Chip, 18kΩ 1/16W	
R505	ERJ3GEYJ563V	Chip, 56kΩ 1/16W	
R601	ERJ3GEYJ103V	Chip, 10kΩ 1/16W	
R602	ERJ3GEYJ153V	Chip, 15kΩ 1/16W	
R603	ERJ3GEYJ103V	Chip, 10kΩ 1/16W	
R604	ERJ3GEYJ153V	Chip, 15kΩ 1/16W	
R605	ERJ3GEYJ332V	Chip, 3.3kΩ 1/16W	
R606	ERJ3GEYJ332V	Chip, 3.3kΩ 1/16W	
R607	ERJ3GEYJ103V	Chip, 10kΩ 1/16W	
R608	ERJ3GEYJ153V	Chip, 15kΩ 1/16W	
R609	ERJ3GEYJ153V	Chip, 15kΩ 1/16W	
R610	ERJ3GEYJ332V	Chip, 3.3kΩ 1/16W	
R611	ERJ3GEYJ103V	Chip, 10kΩ 1/16W	

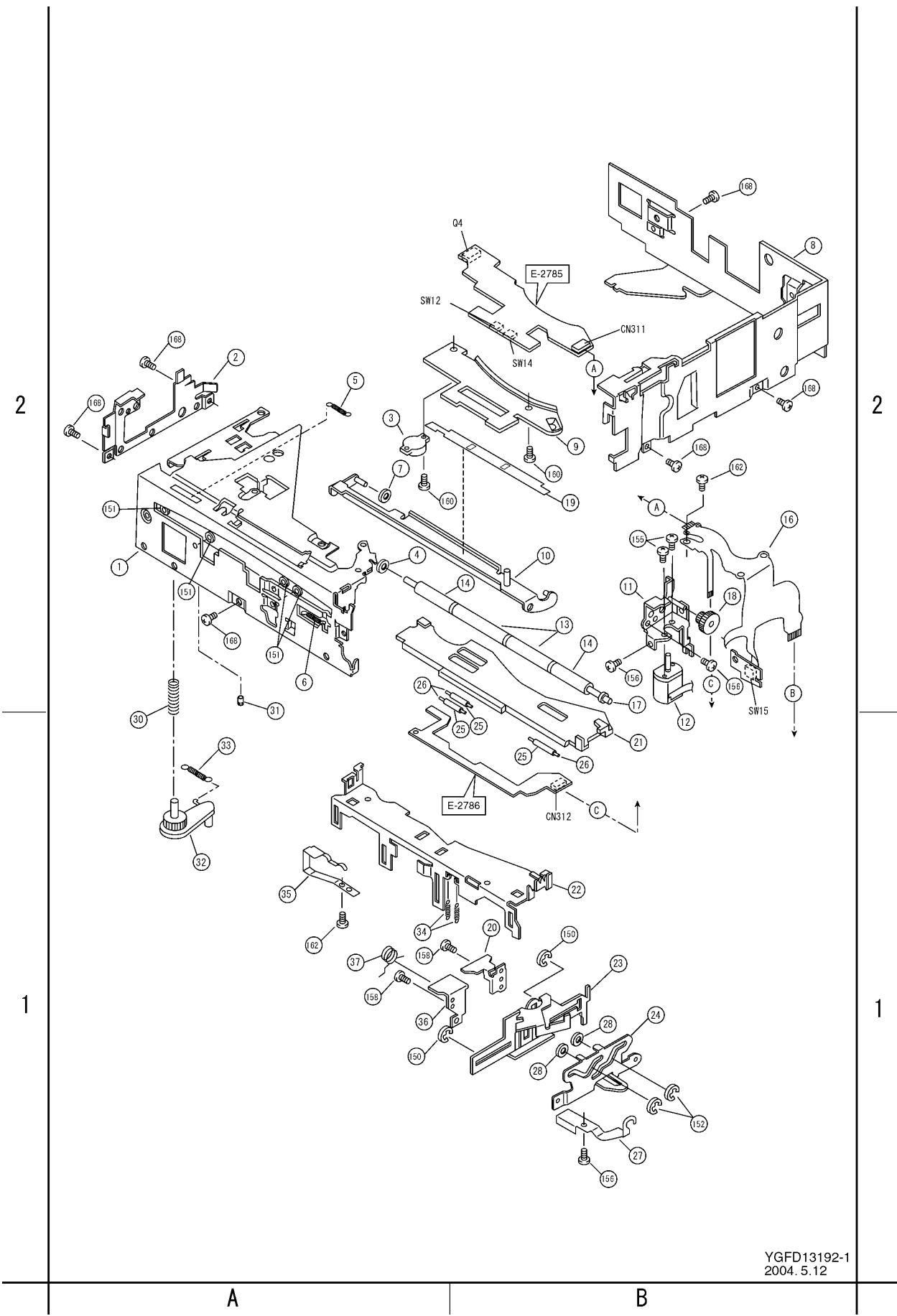
Ref. No.	Part No.	Part Name & Description	Remarks
R612	ERJ3GEYJ103V	Chip, 10k Ω 1/16W	
R613	ERJ3GEYJ332V	Chip, 3.3k Ω 1/16W	
R614	ERJ3GEYJ101V	Chip, 100 Ω 1/16W	
R615	ERJ3GEYJ563V	Chip, 56k Ω 1/16W	
R616	ERJ3GEYJ153V	Chip, 15k Ω 1/16W	
CONNECTORS			
CN1	K1MN14B00080	Connector, 14P	
CN2	K1MN06B00083	Connector, FPC 6P	
CN101	YEAE5FW15R1E	Connector, 15P	
CN301	K1MN19B00054	Connector, 19P	
CN302	K1MN06B00085	Connector, 6P	
CN501	YEAE5FW15R1E	Connector, 15P	
CN601	YEAE5326102	Connector, 2P	
SWITCHES			
SW8	K0L1BA000023	Switch	
SW9	K0L1BA000022	Switch	
SW10	K0L1BA000022	Switch	
SW11	K0L1BA000022	Switch	
CRYSTALS			
XL201	H2D338500002	Crystal	
XL301	H2D500400004	Crystal	
NOISE FILTERS			
L1	J0JAC0000047	Noise Filter	
L2	J0JAC0000047	Noise Filter	
L3	J0JAC0000047	Noise Filter	
L4	J0JAC0000047	Noise Filter	
L5	J0JAC0000047	Noise Filter	
L6	J0JAC0000047	Noise Filter	
L201	J0JAC0000047	Noise Filter	
L202	J0JAC0000047	Noise Filter	
[E2828]			
CONNECTOR			
CNP1	K1MN11B00062	Connector, 11P	
SWITCH			
SW1	K0L1BA000023	Push Switch	
[E2787]			
SWITCH			
SW15	K0L1BA000023	Push Switch	
[E2788]			
TRANSISTOR			
D1	B3NAA0000065	Photo Interrupter	
SWITCH			
SW2	K0L1BA000023	Push Switch	
[E2785]			
IC's and TRANSISTORS			
Q4	B3NAA0000065	Photo Interrupter	
Q5	B3HB00000012	Transistor	
Q6	B3HB00000012	Transistor	
Q7	B3HB00000012	Transistor	
Q13	B3HB00000012	Transistor	

Ref. No.	Part No.	Part Name & Description	Remarks
CONNECTOR			
CN311	K1MN09B00061	Connector, 9P	
SWITCHES			
SW12	K0L1BA000023	Switch	
SW14	K0L1BA000023	Switch	
[E2786]			
DIODES			
D5	B3EB00000013	Diode	
D6	B3EB00000013	Diode	
D7	B3EB00000013	Diode	
D13	B3EB00000013	Diode	
CONNECTOR			
CN312	K1MN06A00016	Connector, 6P	
Mechanical Parts			
MISCELLANEOUS			
AJ1	YGAJ071495	Motor Power Cord w/Plug, 2P	
AT1	YEATSD00405	Bracket, GND	
1	YGFA012050A	Upper Chassis Ass'y	
2	YGFX018678A	Side Bracket L	
3	YGFS04752	Rotary Damper Ass'y	
4	YEFW04159A	Roller Shaft Collar	
5	YGFX0052588	Outline Detection Spring	
6	YGFX0052591	Feeder lock Lever Spring	
7	YGFX0052723	Off Backlash Spring	
8	YGFA011965C	Side Chassis R	
9	YGFX206150	Disc Guide U	
10	YGFX249492A	Feeder Arm Ass'y	
11	YGFX018690	Loading Motor Bracket Ass'y	
12	YGPOFX4762	Loading Motor Ass'y	
13	YEFX218299	Rubber Roller	
14	YGFW05412	Disc Collar	
16	YGAP2787	Loading Motor FPC	
17	YGFW05414	Collar Shaft Ass'y	
18	YGFX0031122	Loading Gear	
19	YGFX206157	Feeder Piece	
20	YGFX206152A	Guide FL	
21	YGFX206158	Slide Plate	
22	YGFX0462168A	Feeder Plate	
23	YGFX219134A	Guide F Base	
24	YGFX0462182	Guide Cam F Plate Ass'y	
25	YEFX218296	Disc Roller	
26	YGFW062741	Shaft	
27	YGFX0052602	Roller Plate Spring	
28	YEFW04181	Guide Plate Collar	
30	YGFX0052648	Push Lever Thrust Spring	
31	YEFX218308	Roller	
32	YGFX0462153	Push Lever	
33	YGFX0052589	Push Spring	
34	YGFX0052590	Feeder Spring	
35	YGFX0052601A	Spring	
36	YGFX206153	Guide FU	
37	YGFX0052712	Guide Spring F	
39	YGFX0052594	Clamp Drive Spring	
40	YGFA011977C	Swing Base Ass'y	
41	YGFX0461903B	Guide Lever Ass'y B	
42	YEFX018595	Guide B	
43	YGFX0462172	Horizontal Rack	
44	YGFX234196	Horizontal Cam	
45	YGFX0031183	Horizontal Cam Gear	
46	YGFX0031130	Horizontal Cam Gear	

Ref. No.	Part No.	Part Name & Description	Remarks
47	YEFX003931	Horizontal Gear 5	
48	YGFX0031138	Horizontal Gear 4	
49	YEFX014047	Snap Ring	
50	YGFX0031125	Horizontal Gear 3	
51	YESFX003085	Gear	
52	YEFX003896	Horizontal Gear 1	
53	YEFX003884	Stocker Cam 3	
54	YEFX003883B	Stocker Cam 2	
55	YGFX0052595	Stocker Thrust Spring	
56	YEFX003875	Elevator Gear 4	
57	YGFA011973	Suspension Chassis Ass'y	
58	YGP0FX4646	Spindle Motor Ass'y	
59	YGFS04745	Damper 2	
60	YGFX206156	Disc Guide S	
61	YGFX9992661	Nut Piece	
62	YGFX218312	O-Ring	
63	YGFX0052582A	Damper Spring R	
64	YEFX003872	Elevator Gear 1	
65	YGFX0052593	Sus. Lock Spring	
66	YGFX0462183	Lever	
67	YEFX003873	Elevator Gear 2	
68	YEFX003874	Elevator Gear 3	
69	YEFX003882A	Stocker Cam 1	
70	YGFX0462173	Stocker Rack	
71	YEP0FX4382	Optical Pick-up Ass'y	
72	YGJT03301	Feed Screw Ass'y	
73	YGFX0052586	Thrust Adjustment Spring	
74	YEFW04161A	Feed Screw Housing	
75	YEFX0052557	Travers Guide	
76	YGP0FX4763	Traverse Motor Ass'y	
77	YGFX018682	Gear Bracket	
78	YGFX0031119	TR Gear 2	
79	YGFX0031120	TR Gear 3	
80	YGFA011974	Suspension Chassis Bottom Ass'y	
81	YGFS04746	Damper 1	
82	YGFX0052596	Stocker Spring	
83	YGFX0052587	Unclamp Spring	
84	YGFX0052583A	Damper Spring	
85	YGFX0052581A	Damper Spring F	
86	YEP0FX3660S	Elevator Motor Ass'y	
87	YGAP2788	Elevator Motor FPC	
88	YGFX018600A	Elevator Motor Bracket	
89	YGFX0462174B	Suspension Lock Plate	
91	YGFX0462166	SW Cover	
92	YGAP2828	Suspension FPC	
93	YEFX233521	Disc Holder L	
94	YEFX0031007	Disc Hold Gear	
95	YGFA011976D	Main Chassis Ass'y	
96	YGFX0031128	Clamp Cam Gear	
100	YGFX0462184	Guide Cam B Plate Ass'y	
101	YGFX219135	Guide B Base Ass'y	
102	YGFX206155A	Guide BL	
103	YEFX206136D	Guide BU	
104	YGFX0052662	Guide Spring B	
105	YGFX0462185	Avoidance Lever 1 Ass'y	
106	YGFX0031137	Pushout Cam Gear	
110	YGFA011978A	Stocker Top Coner Ass'y	
111	YGFX233526B	Stocker Tray Support	
112	YGFX0462220	Pushout Lever	
113	YGFX018691	Horizontal Motor Bracket Ass'y	
114	YGP0FX4760	Horizontal Motor Ass'y	
115	YESFX003087	Pushout Gear 2	
116	YESFX003086	Pushout Gear 1	
117	YEFX233506	Disc Holder U	
118	YGFX0052608	Push Lever Spring	
119	YGFX0052584	Avoidance Lever Spring	
120	YEFX0052291B	Pushout Plate Spring	
121	YGFX0462221	Pushout Lever Reinforcing Plate	
131	YGFX233527	Stocker Tray Housing L	
132	YGFX9992609	Stocker Tray	

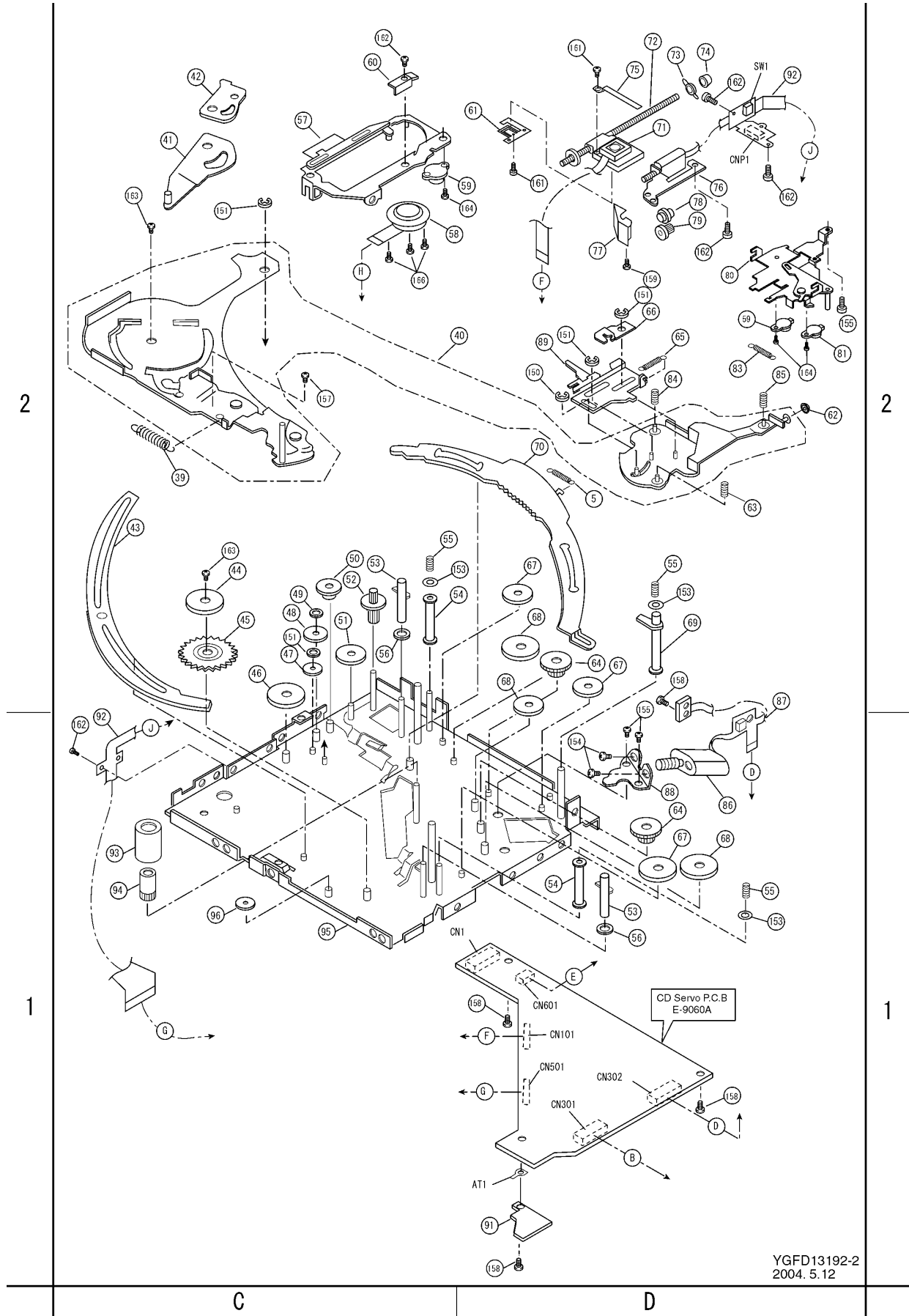
Ref. No.	Part No.	Part Name & Description	Remarks
150	XUC15V	Retaining Ring	
151	XUC2V	E-Ring	
152	YEJE01044	Retaining Ring	
153	YGFW05389	Stocker Cam Ring	
154	XQN2+A2FX	Screw, M2x2mm	
155	XQN2+C2FX	Screw, M2x2mm	
156	XSB2+3FX	Bind Screw, M2x3mm	
157	XSB2+4FX	Bind Screw, M2x4mm	
158	XYN2+C4FX	Screw w/Washer, M2x4mm	
159	XYN2+C5FX	Screw w/Washer, M2x5mm	
160	XYN2+C6FX	Screw w/Washer, M2x6mm	
161	YEJS02037A	Tapping Screw	
162	YGJS05050	Thin Head Screw w/Washer	
163	YGJS05051	Thin Head Screw w/Washer	
164	YGJS05063	Screw w/Washer	
165	YEJS06097A	Screw	
166	YEJS06246	Super Thin Head Screw	
168	YEJT03129	Tapping Screw	
169	YEJS06244	Screw, M1.7x3mm	

8 EXPLODED VIEW (CD Deck-1)



YGFD13192-1
2004. 5. 12

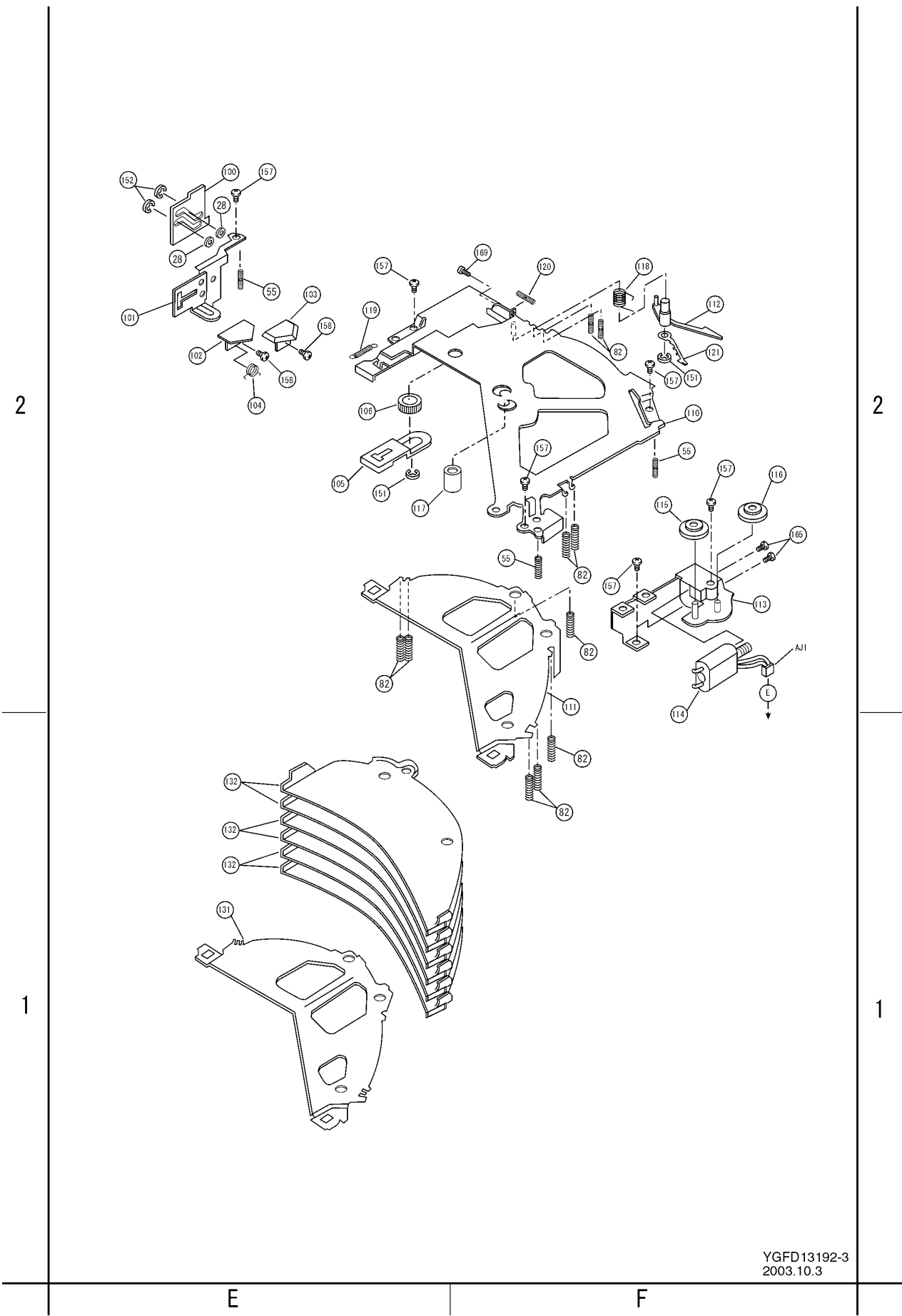
9 EXPLODED VIEW (CD Deck-2)



YGFD13192-2
2004. 5. 12



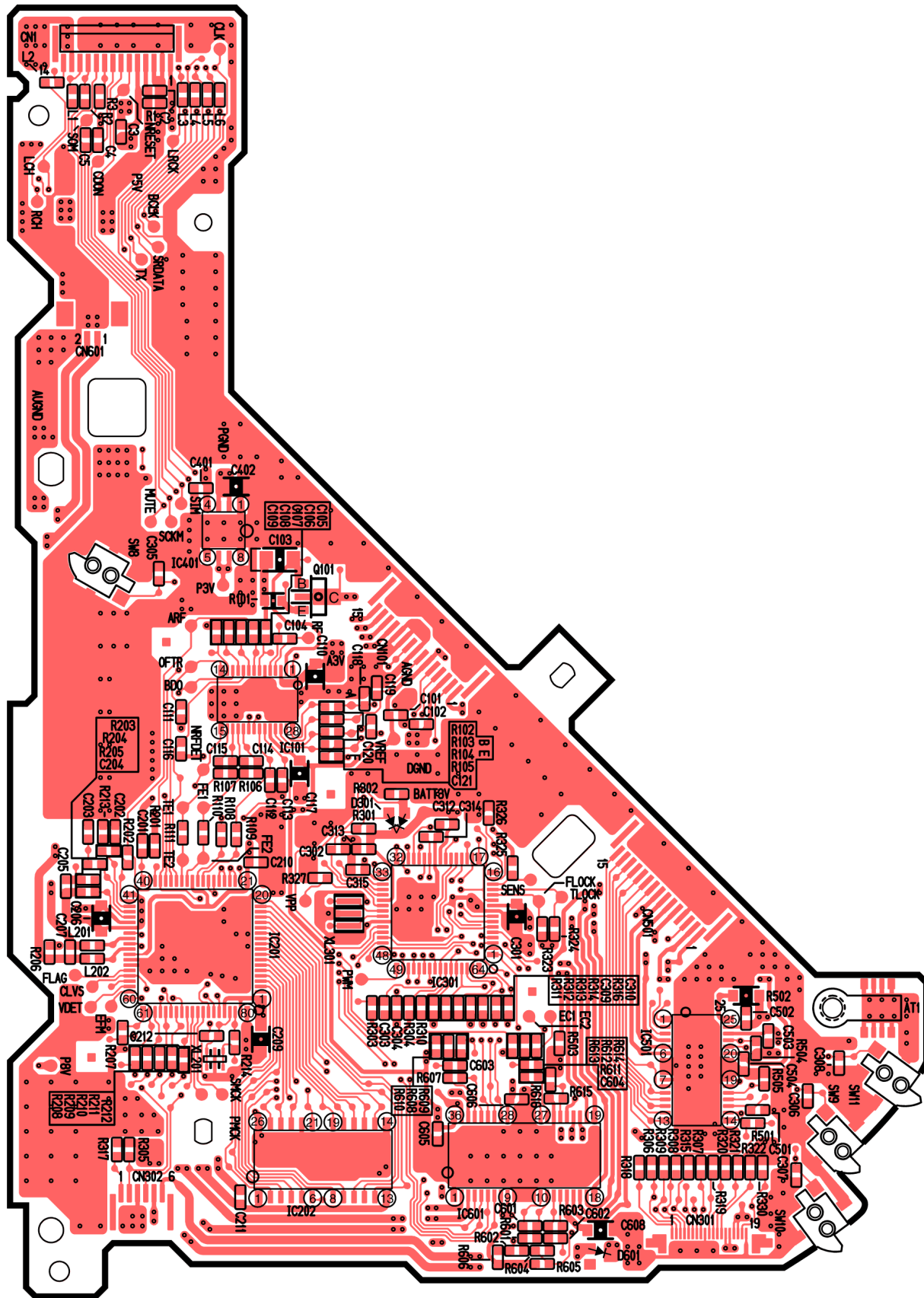
10 EXPLODED VIEW (CD Deck-3)



YGFD13192-3
2003.10.3

11 WIRING DIAGRAM

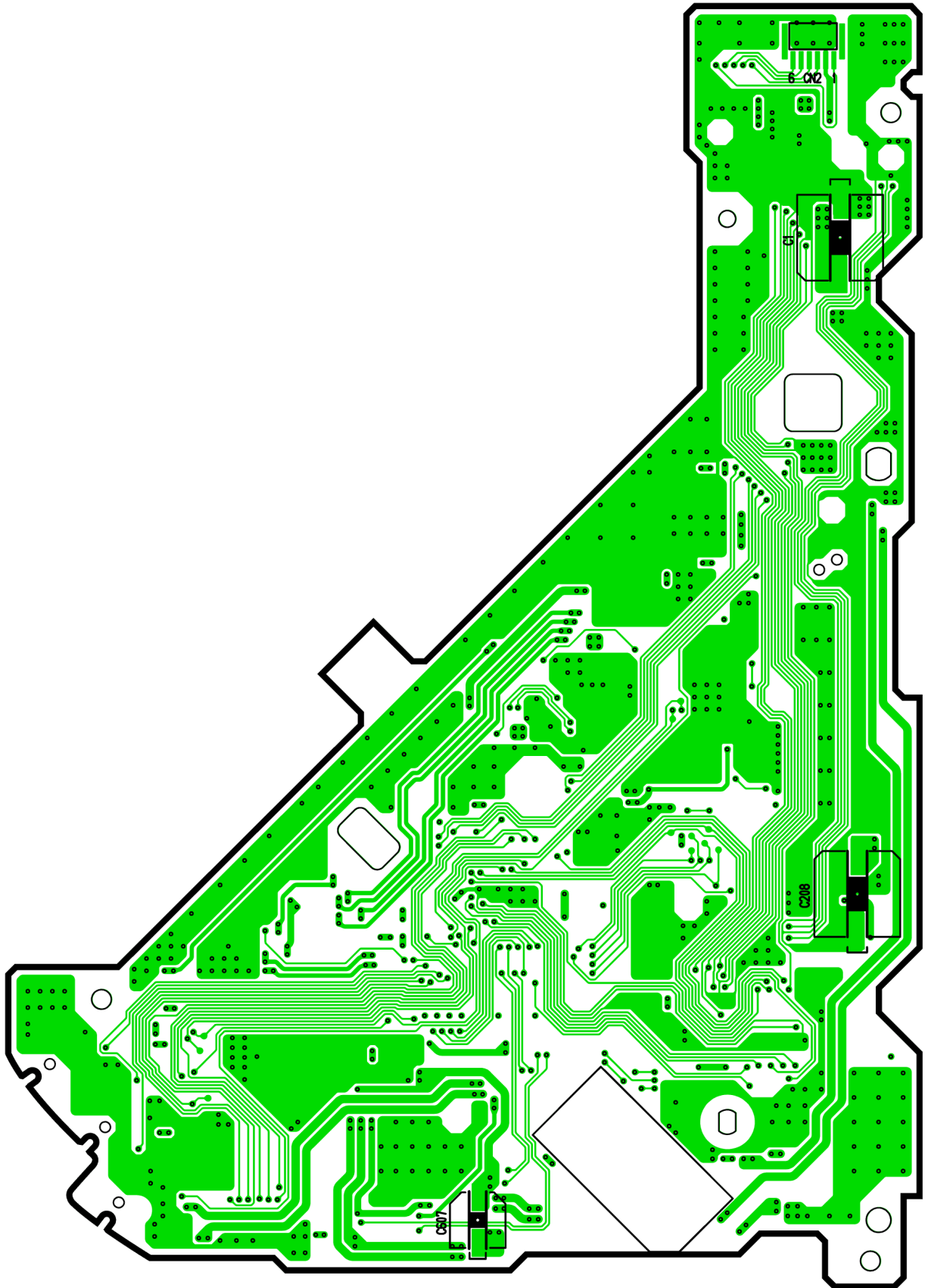
11.1. CD Servo Block (Top View)



[E-9060A] [Top View]



11.2. CD Servo Block (Bottom View)



[E-9060A] [Bottom View]

YGFD13192 DECK P.C.B

**THIS PAGE IS JUST FOR
THE PAGE LAYOUT USE
ONLY.**

12 SCHEMATIC DIAGRAM (CD Deck)

