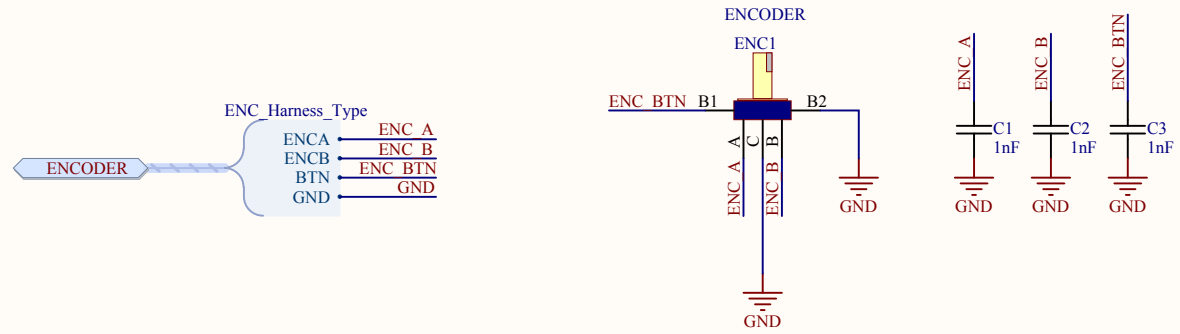
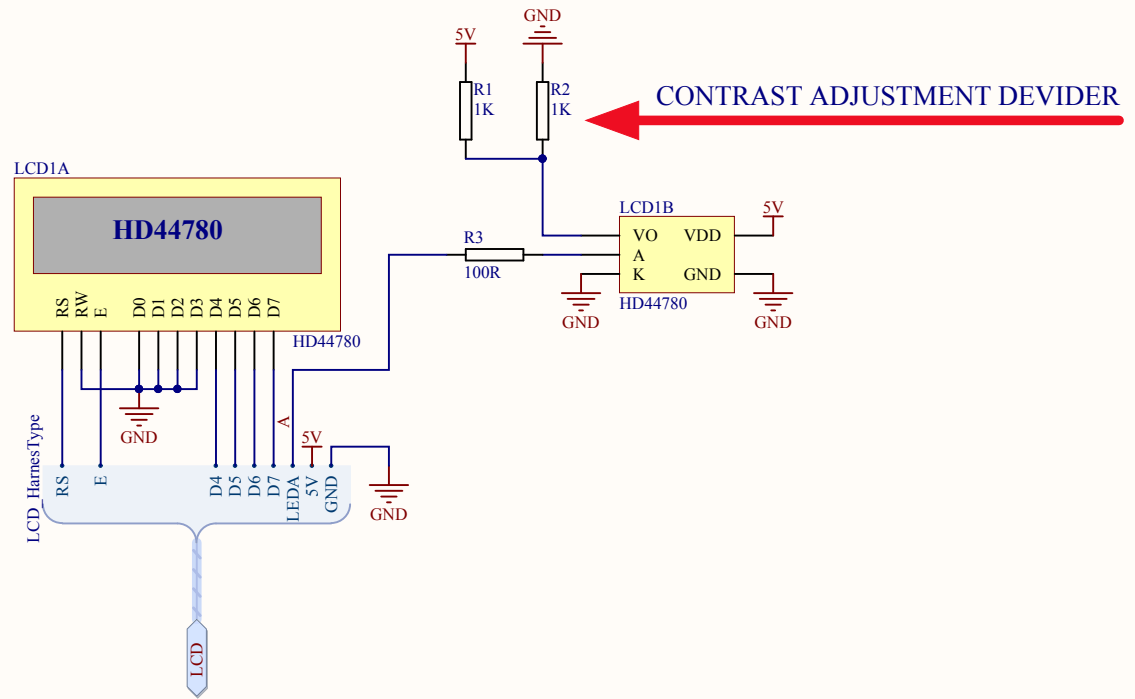


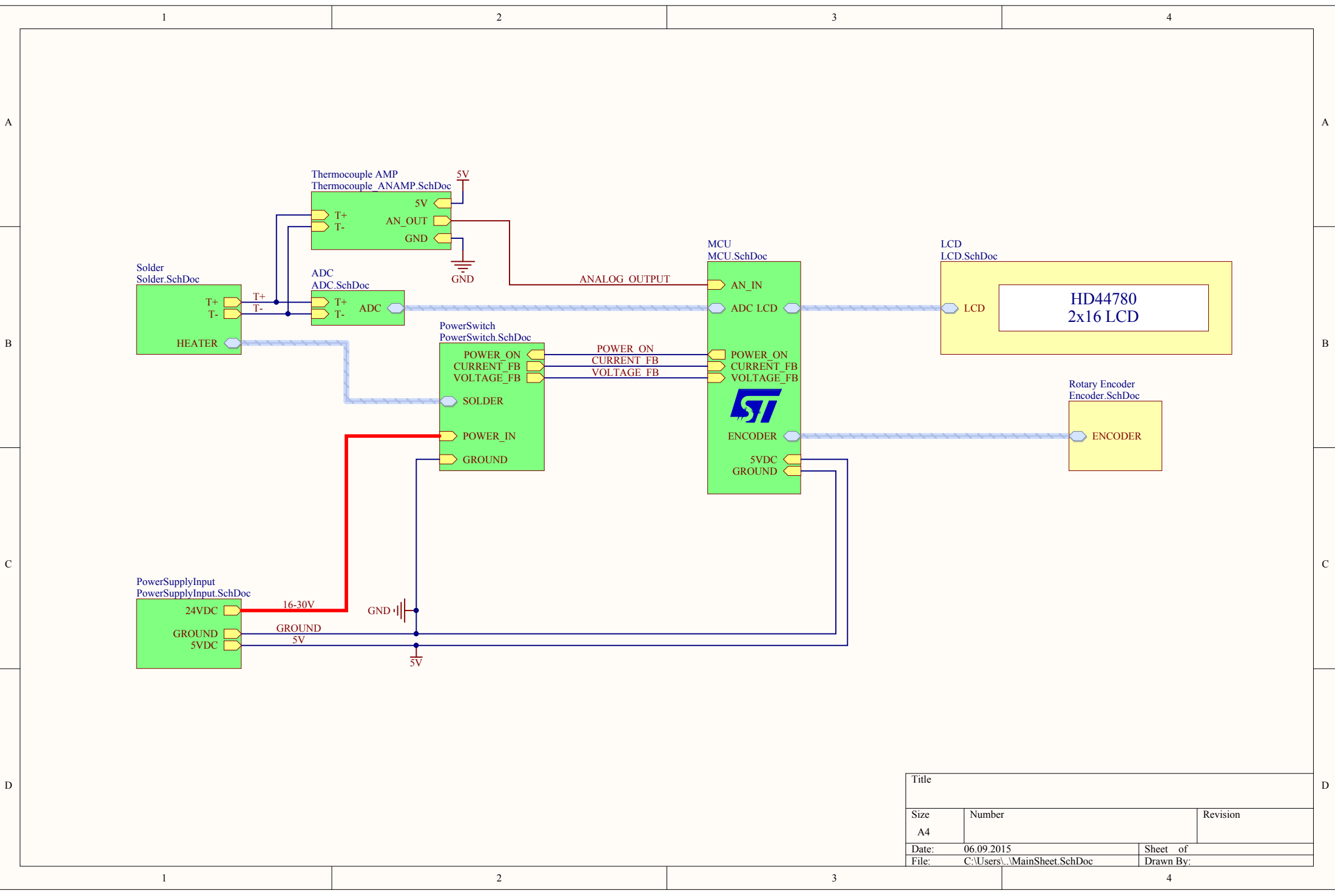
Title		
Size	Number	Revision
A4		
Date:	06.09.2015	Sheet of
File:	C:\Users\...\ADC.SchDoc	Drawn By:



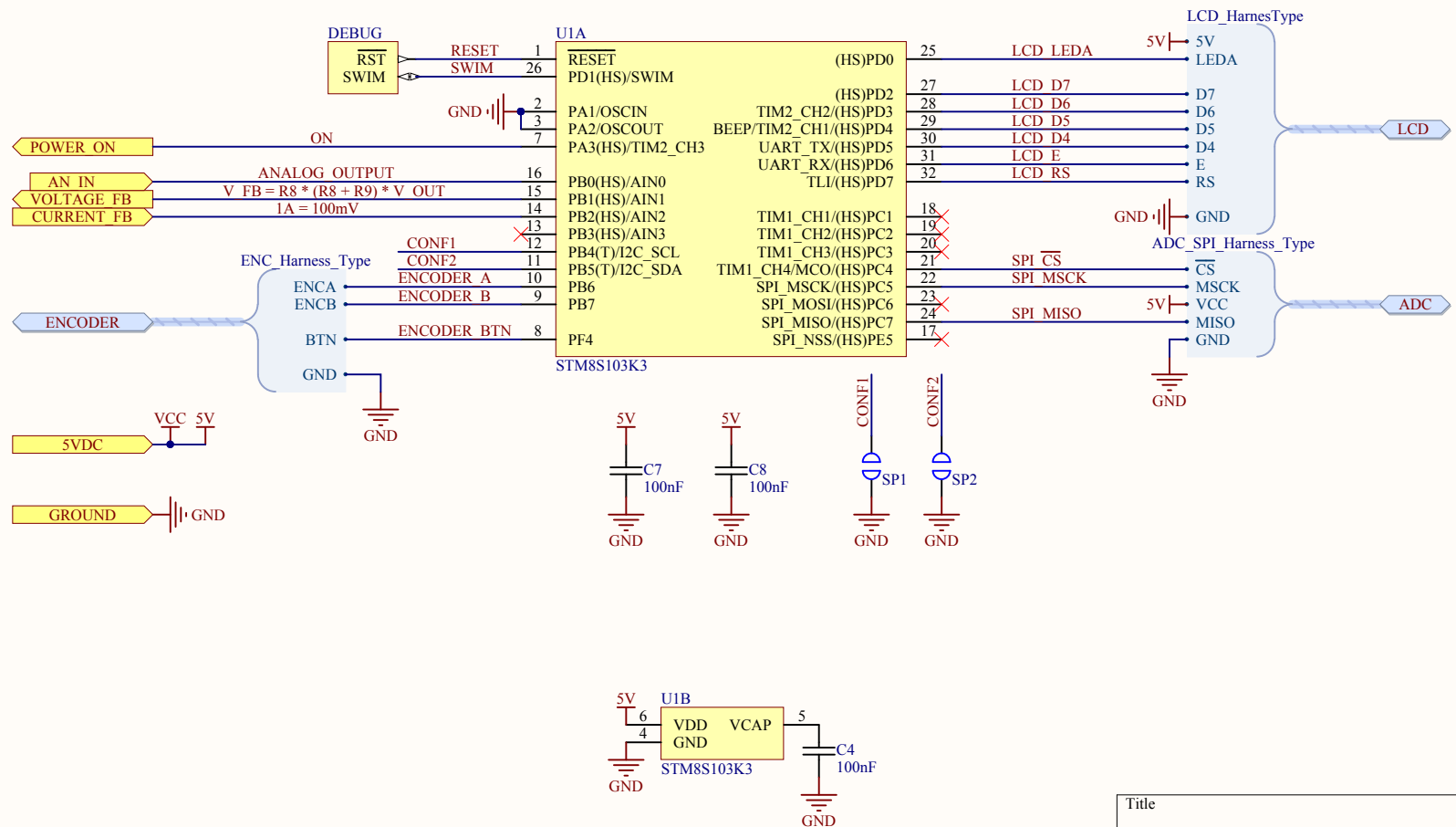
Title		
Size	Number	Revision
A4		
Date:	06.09.2015	Sheet of
File:	C:\Users\...\Encoder.SchDoc	Drawn By:



Title		
Size A4	Number	Revision
Date: 06.09.2015	Sheet of	
File: C:\Users\...\LCD.SchDoc	Drawn By:	



Title		
Size A4	Number	Revision
Date: 06.09.2015	Sheet of	
File: C:\Users\...\MainSheet.SchDoc	Drawn By:	



Title		
Size	Number	Revision
A4		
Date:	06.09.2015	Sheet of
File:	C:\Users\...\MCU.SchDoc	Drawn By:

1

2

3

4

A

A

B

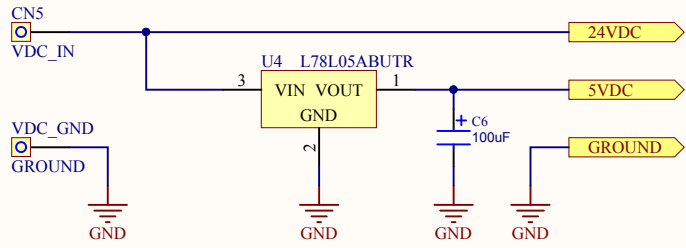
B

C

C

D

D



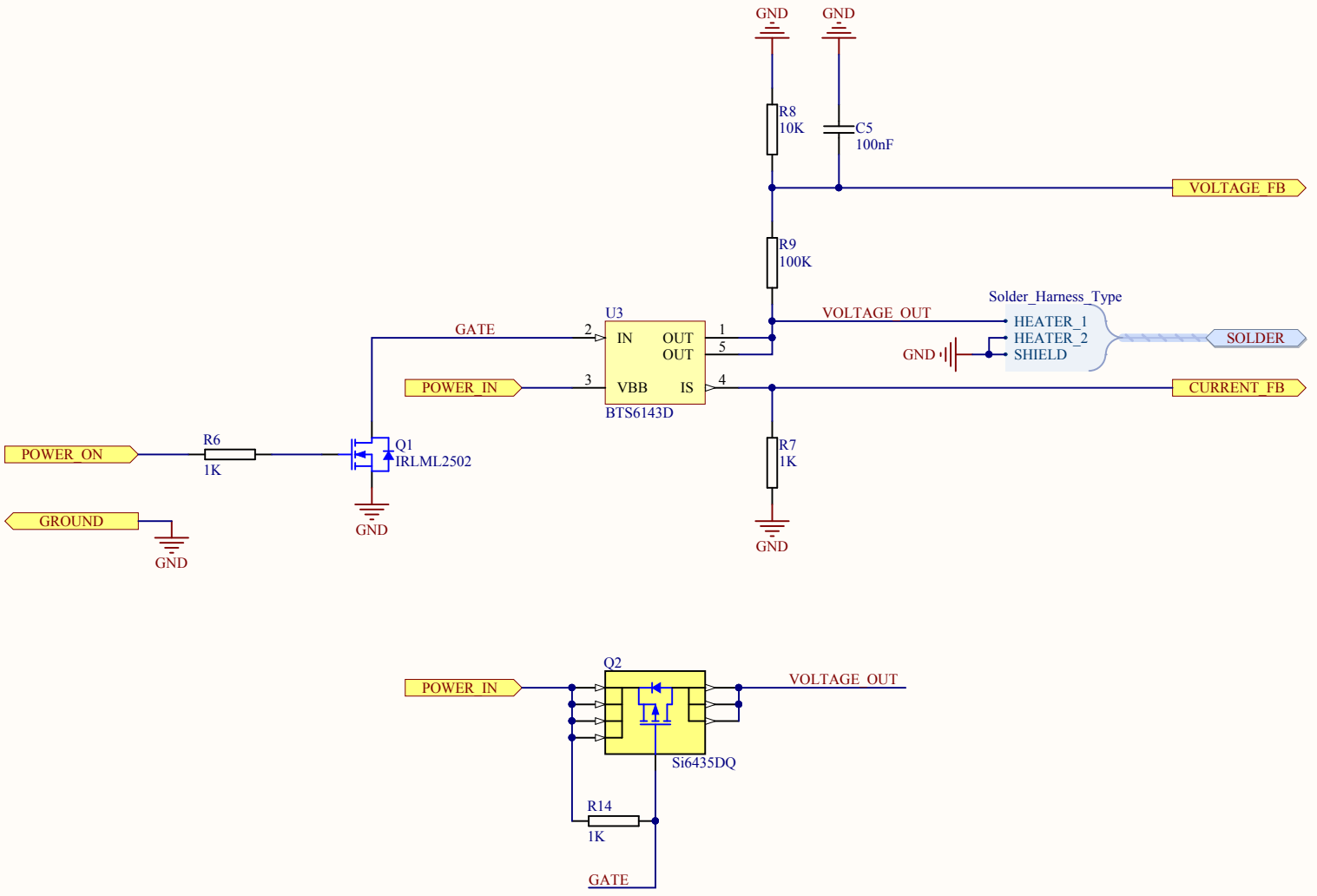
Title		
Size A4	Number	Revision
Date: 06.09.2015	Sheet of	
File: C:\Users\...\PowerSupplyInput.SchDoc	Drawn By:	

1

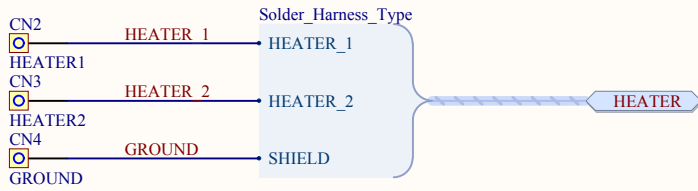
2

3

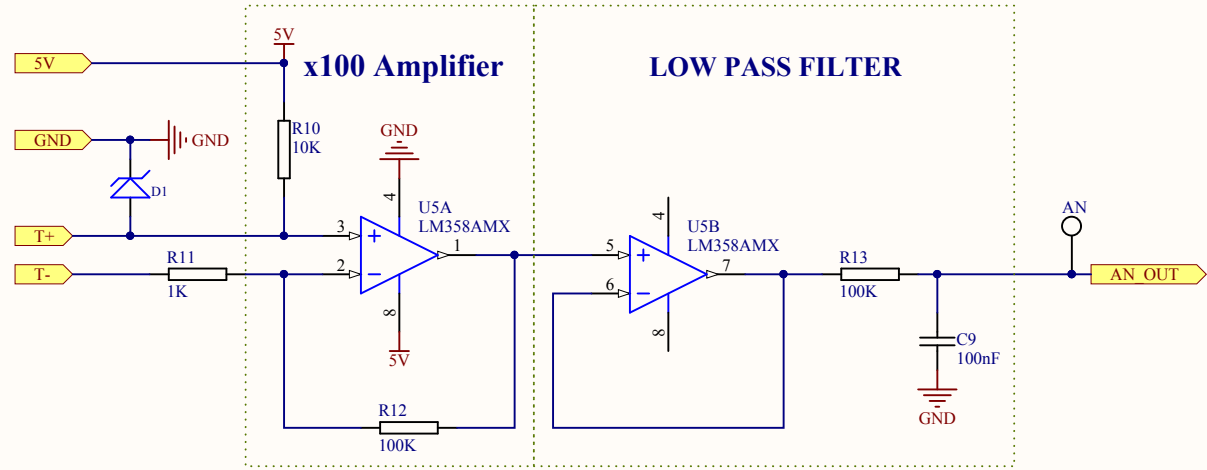
4



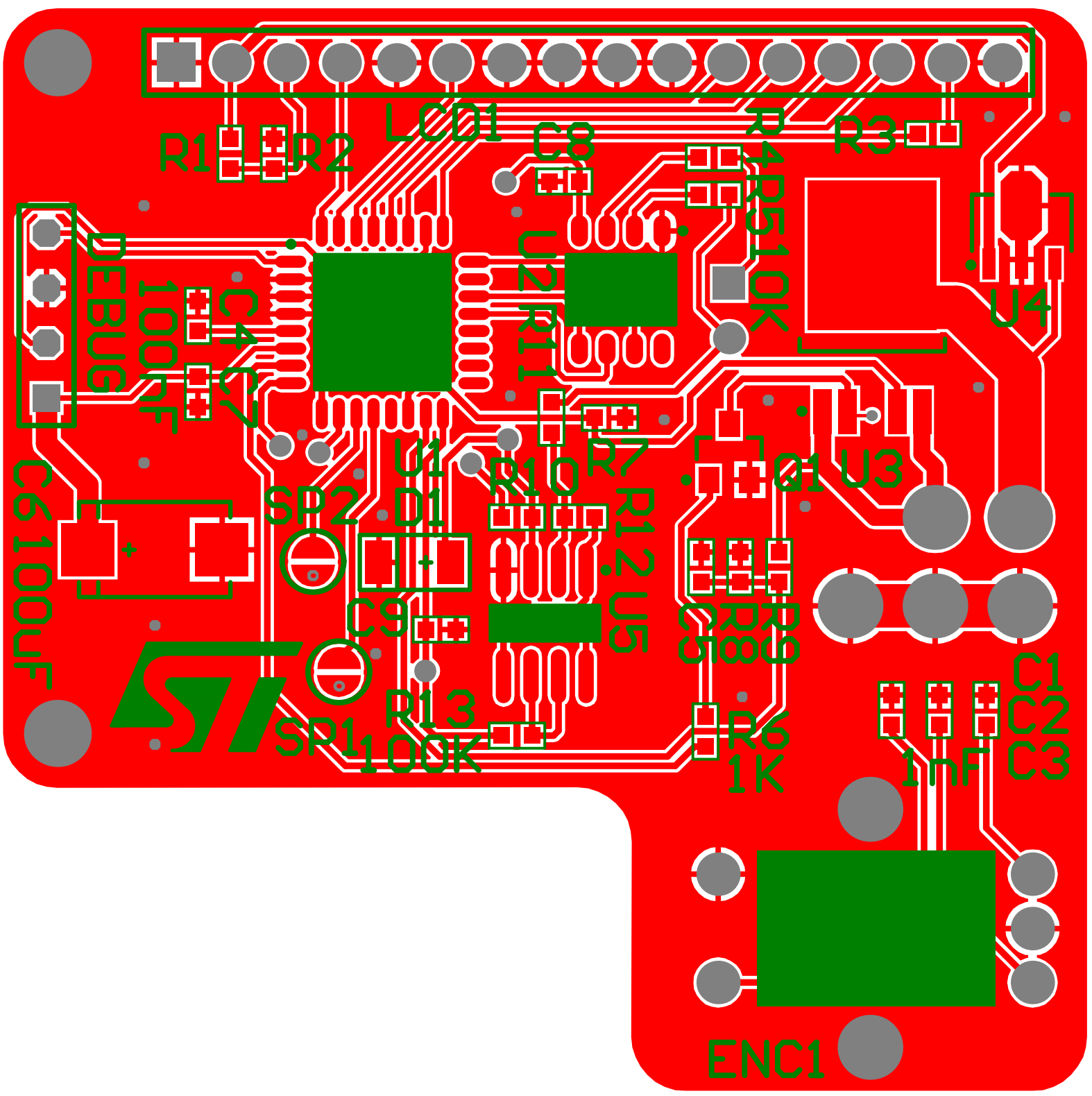
Title		
Size	Number	Revision
A4		
Date:	06.09.2015	Sheet of
File:	C:\Users\...\PowerSwitch.SchDoc	Drawn By:



Title		
Size	Number	Revision
A4		
Date:	06.09.2015	Sheet of
File:	C:\Users\...\Solder.SchDoc	Drawn By:



Title		
Size A4	Number	Revision
Date: 06.09.2015	Sheet of	
File: C:\Users\...\Thermocouple_ANAMP.SchDoc	Drawn By:	



Comment	Description	Designator	Footprint	LibRef	Quantity
TEST POINT		AN	TEST POING SMD	TEST POINT	1
1nF	CAPACITOR 0603 CERAMIC	C1, C2, C3	0603C-GENERIC	0603C-1NF-50V-X7R	3
100nF	CAPACITOR 0603 CERAMIC	C4, C5, C7, C8, C9	0603C-GENERIC	0603C-100NF-25V-X7R-TDK	5
100uF	Capacitor	C6	CPM7343	CPM7343	1
Header 2	Header, 2-Pin	CN1	HDR1X2	Header 2	1
HEATER1		CN2	3x1.5mm VIA PAD	VIA PAD	1
HEATER2		CN3	3x1.5mm VIA PAD	VIA PAD	1
GROUND		CN4, VDC_GND	3x1.5mm VIA PAD	VIA PAD	2
VDC_IN		CN5	3x1.5mm VIA PAD	VIA PAD	1
{Value}	Zener Diode	D1	SOD80C	DZ_SOD80	1
SWIM DEBUG 4 PIN	SWIM DEBUG 4 PIN	DEBUG	SWIM DEGUB 4 pin	SWIM DEBUG 4 PIN	1
ENCODER	12mm Rotary Encoder w Button	ENC1	Rotary Encoder	Encoder rotary 12mm	1
HD44780	HD44780 LCD 2X16	LCD1	LCD 2x16	HD44780 LCD 2x16 V2	1
IRLML2502	N-Channel Enhancement Mode MOSFET	Q1	SOT23	N-ch_SOT23	1
Si6435DQ	4A P-Channel Enhancement-Mode MOSFET	Q2	TSSOP8 Low profile	Si6435DQ	1
1K	GENERIC RESISTOR 0603	R1, R2, R6, R7, R11, R14	0603R-1k	0603R-1K	6
100R	GENERIC RESISTOR 0603	R3	0603R-100	0603R-100	1
10K	GENERIC RESISTOR 0603	R4, R5, R8, R10	0603R-10K	0603R-10K	4
100K	GENERIC RESISTOR 0603	R9, R12, R13	0603R-100K	0603R-100K	3
Soldering Point		SP1, SP2	Soldering Point 2	Soldering Point 2	2
STM8S103K3	16 MHz STM8S 8-bit MCU, up to 8 Kbytes Flash, data EEPROM, 10-bit ADC, 3 timers, UART, SPI, I ² C	U1	LQFP32	STM8S103K3	1
MAX6675	Thermocouple ADC	U2	SO8	MAX6675	1
BTS6143D	PROFET Smart Highside Power Switch, 1 Channel, 10 A Load Current, -40 to 150 degC, PG-TO252-5-11, Reel, Green	U3	INF-PG-TO252-5-11_M	CMP-1095-00112-1	1
L78L05ABUTR	Positive Voltage Regulator, 5V, 4-Pin SOT-89, Tape and Reel	U4	SOT-89_N	CMP-0244-00406-1	1
LM358AMX	Low Power Dual Operat	U5	M08A_M	CMP-0055-00768-1	1