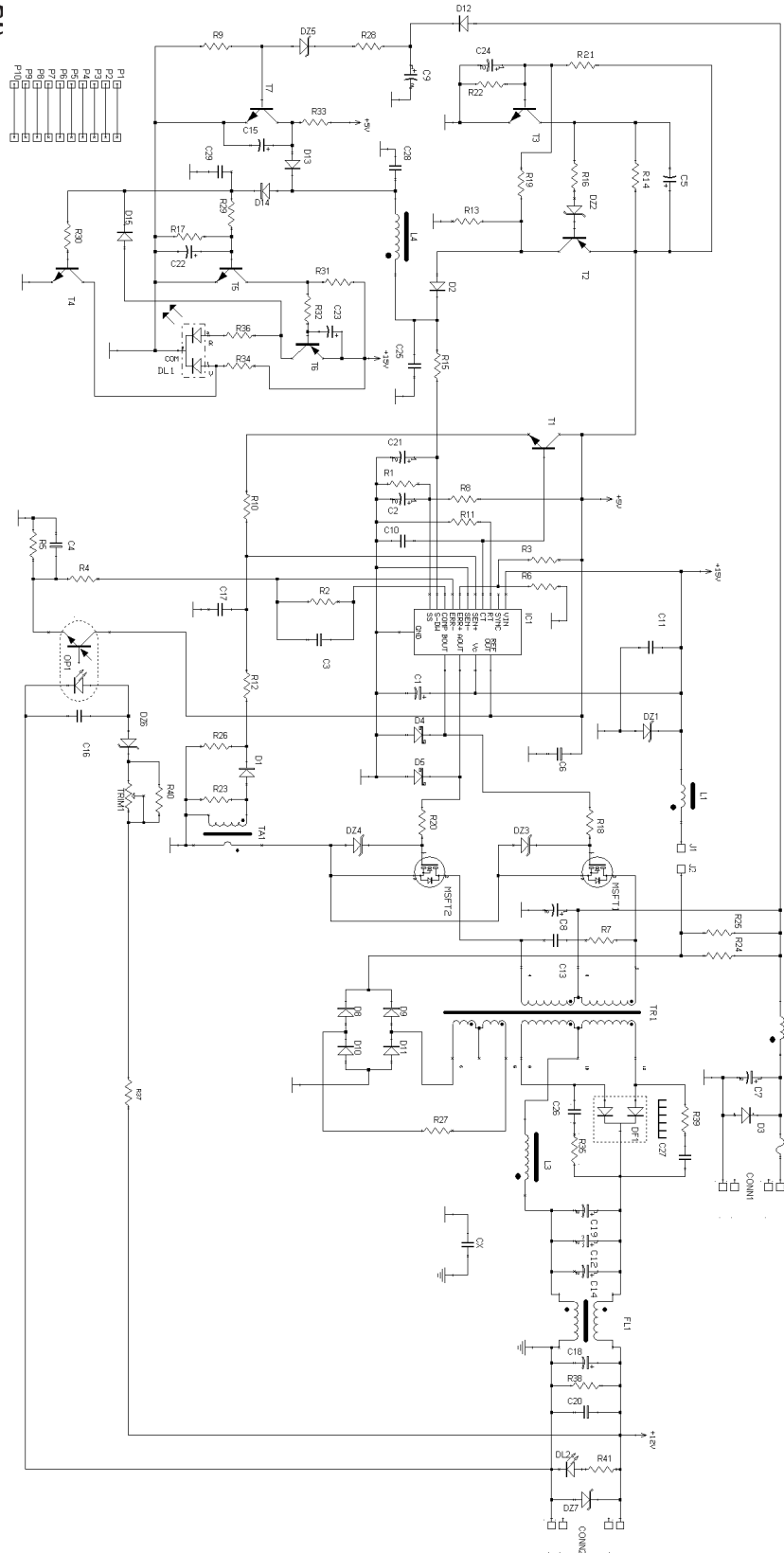
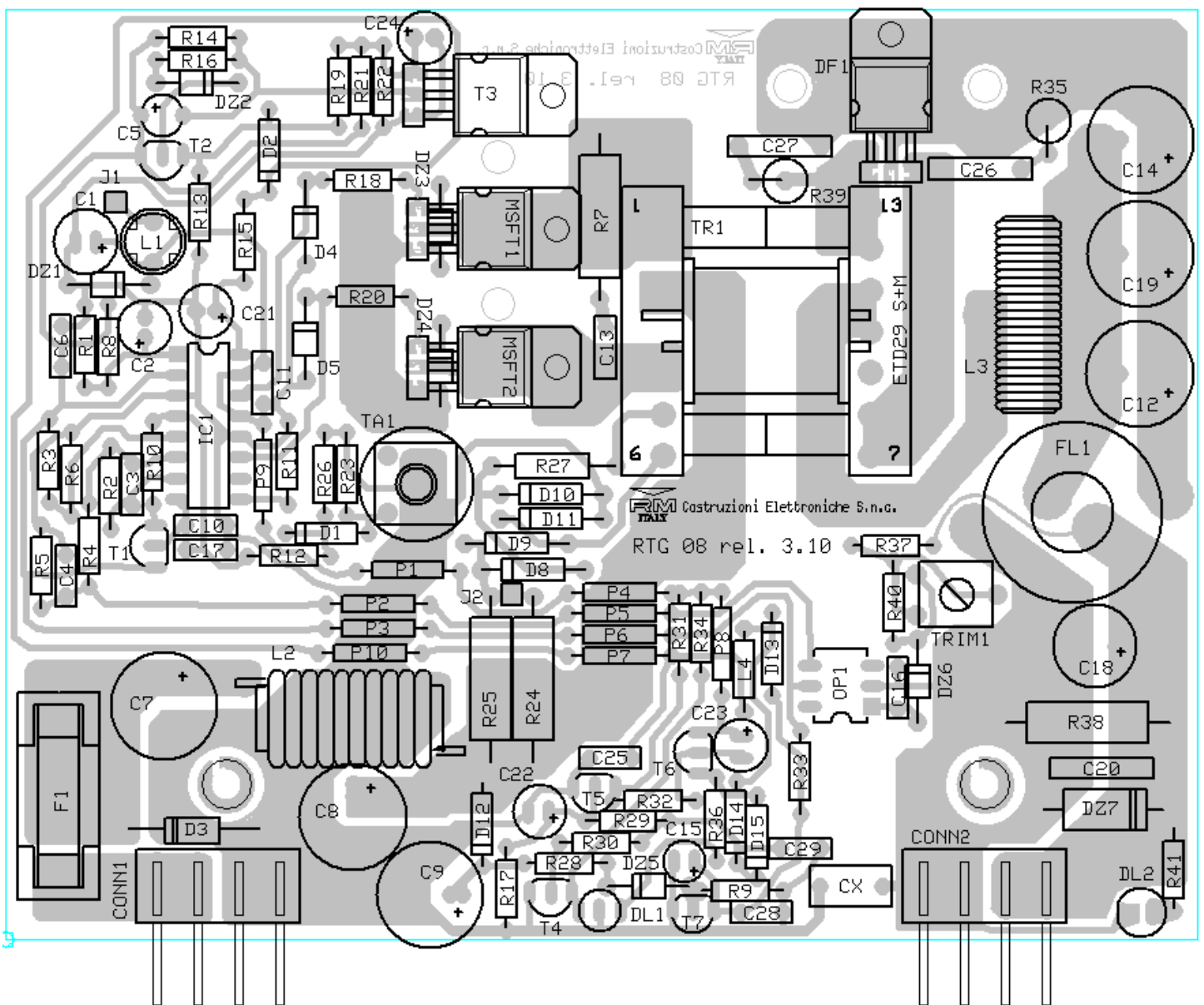


Mod. RTG 8-24 tension reducer

Schematic diag

Version 1.00





List of components

C 1	=	100 µF	35 V	
C 2	=	47 µF	25 V	
C 3	=	100 nF	50 V	Polyester
C 4	=	10 nF	50 V	Polyester
C 5	=	4,7 µF	25 V	
C 6	=	100 nF	50 V	Polyester
C 7	=	100 µF	63 V	105 °C
C 8	=	100 µF	63 V	105 °C
C 9	=	100 µF	35 V	
C 10	=	1,0 nF	50 V	Polyester
C 11	=	100 nF	50 V	Polyester
C 12	=	1000 µF	35 V	105 °C
C 13	=	1,0 nF	1000 V	Ceramic
C 14	=	1000 µF	35 V	105 °C
C 15	=	4,7 µF	25 V	
C 16	=	10 nF	50 V	Polyester
C 17	=	470 pF	50 V	Ceramic

C 18	=	470 µF	35 V	
C 19	=	1000 µF	35 V	105 °C
C 20	=	220 nF	100 V	Polyester
C 21	=	10 µF	25 V	
C 22	=	10 µF	25 V	
C 23	=	10 µF	25 V	
C 24	=	47 µF	25 V	
C 25	=	100 nF	50 V	Polyester
C 26	=	2,2 nF	1000 V	Polyester
C 27	=	2,2 nF	1000 V	Polyester
C 28	=	100 nF	50 V	Polyester
C 29	=	100 nF	50 V	Polyester
C x	=	2,2 nF	250 V Y1	
R 1	=	47 KΩ	¼ W	
R 2	=	100 KΩ	¼ W	
R 3	=	4,7 KΩ	¼ W	
R 4	=	22 KΩ	¼ W	
R 5	=	1,0 KΩ	¼ W	

R ₆	=	4,7 K Ω	¼ W	D ₁₄	=	1N 4148
R ₇	=	1,0 K Ω	2 W	D ₁₅	=	1N 4148
R ₈	=	10 K Ω	¼ W	DF ₁	=	MBR 1545CT
R ₉	=	8,2 K Ω	¼ W	Dz ₁	=	20 V 1,3 W
R ₁₀	=	2,7 K Ω	¼ W	Dz ₂	=	3,3 V ½ W
R ₁₁	=	10 K Ω	¼ W	Dz ₃	=	15 V 1,3 W
R ₁₂	=	470 Ω	¼ W	Dz ₄	=	15 V 1,3 W
R ₁₃	=	4,7 K Ω	¼ W	Dz ₅	=	16 V 1,3 W
R ₁₄	=	2,7 K Ω	¼ W	Dz ₆	=	10 V 1,3 W
R ₁₅	=	4,7 K Ω	¼ W	Dz ₇	=	18 V 5 W
R ₁₆	=	22 K Ω	¼ W	DL ₁	=	Dual-color LED
R ₁₇	=	6,8 K Ω	¼ W	DL ₂	=	Green LED
R ₁₈	=	10 Ω	¼ W	Op ₁	=	CNY-17
R ₁₉	=	330 K Ω	¼ W	U ₁	=	UC3846
R ₂₀	=	10 Ω	¼ W	T ₁	=	BC 337-25
R ₂₁	=	39 K Ω	¼ W	T ₂	=	BC 327-25
R ₂₂	=	3,3 K Ω	¼ W	T ₃	=	TIP 29C
R ₂₃	=	10 K Ω	¼ W	T ₄	=	BC 337-25
R ₂₄	=	330 Ω	2 W	T ₅	=	BC 337-25
R ₂₅	=	680 Ω	1 W	T ₆	=	BC 327-25
R ₂₆	=	27 Ω	¼ W	T ₇	=	BC 337-25
R ₂₇	=	10 Ω	1 W	MSFT ₁	=	IRF 540
R ₂₈	=	18 K Ω	¼ W	MSFT ₂	=	IRF 540
R ₂₉	=	10 K Ω	¼ W	F ₁	=	Fuse 6 A
R ₃₀	=	10 K Ω	¼ W	TA ₁	=	Sens. Corr.
R ₃₁	=	4,7 K Ω	¼ W	Tr ₁	=	EFT29-PP-24
R ₃₂	=	22 K Ω	¼ W	L ₁	=	1 mH
R ₃₃	=	4,7 K Ω	¼ W	L ₂	=	10 μ H 15A
R ₃₄	=	1,0 K Ω	¼ W	L ₃	=	60 μ H 10A
R ₃₅	=	10 Ω	1 W	L ₄	=	10 μ H
R ₃₆	=	1,0 K Ω	¼ W	FL ₁	=	2 x 25 μ H
R ₃₇	=	180 Ω	¼ W			
R ₃₈	=	68 Ω	5 W			
R ₃₉	=	10 Ω	1 W			
R ₄₀	=	1,0 K Ω	¼ W			
R ₄₁	=	1,0 K Ω	¼ W			
TRIM ₁	=	4,7 K Ω	PT10			
P ₁ = P ₂ = P ₃ = P ₄ = P ₅	=	Bridge 0 Ω				
P ₆ = P ₇ = P ₈ = P ₉ = P ₁₀	=	Bridge 0 Ω				
D ₁	=	1N 4148				
D ₂	=	1N 4148				
D ₃	=	BY 255				
D ₄	=	BAT 49				
D ₅	=	BAT 49				
D ₈	=	BYV26E				
D ₉	=	BYV26E				
D ₁₀	=	BYV26E				
D ₁₁	=	BYV26E				
D ₁₂	=	1N 4148				
D ₁₃	=	1N 4148				